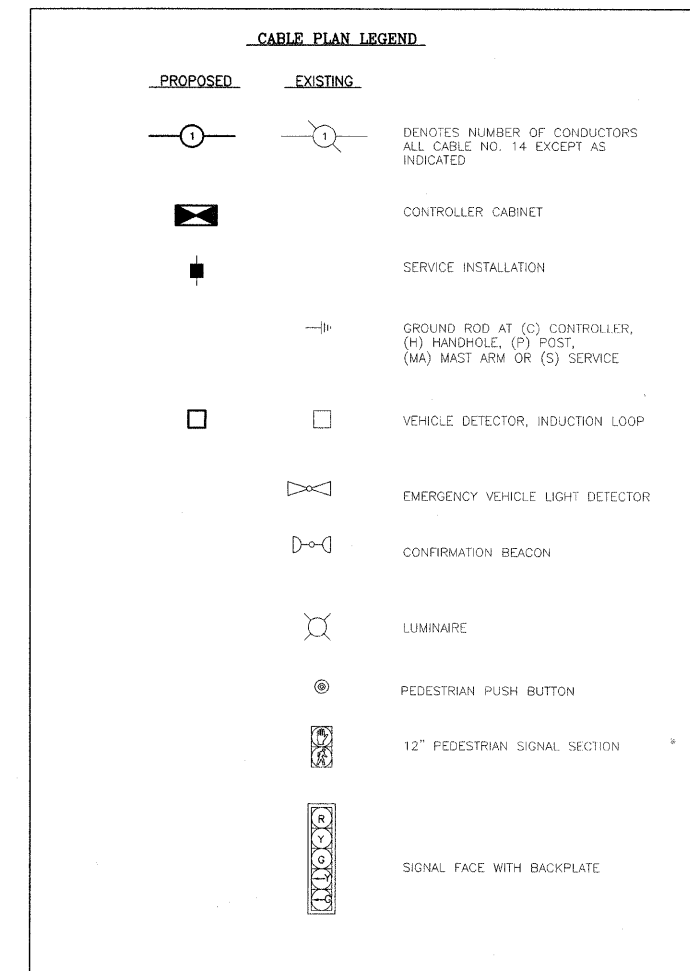
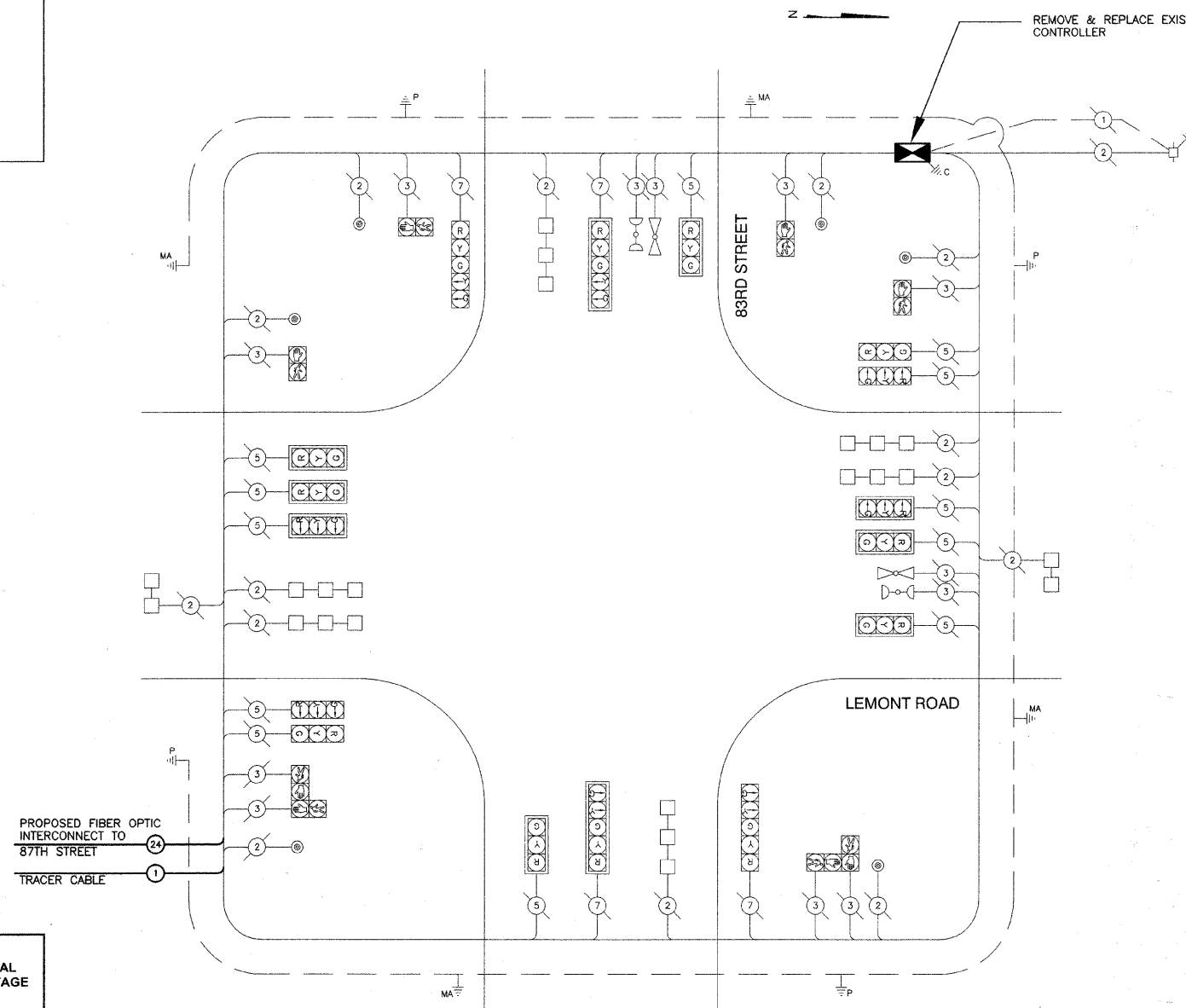
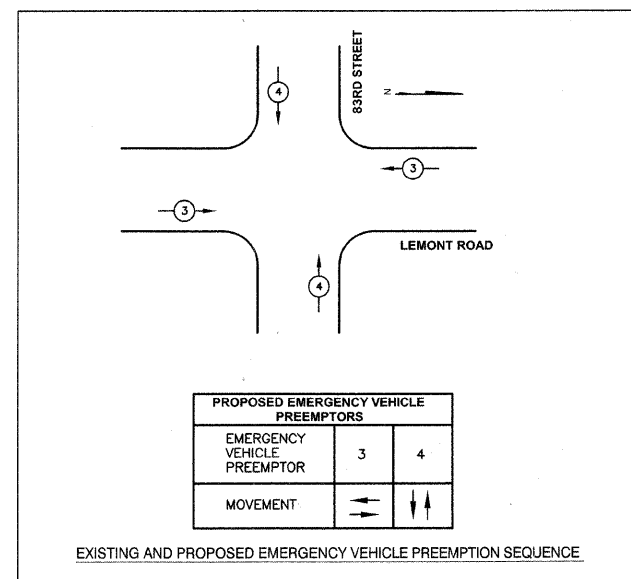
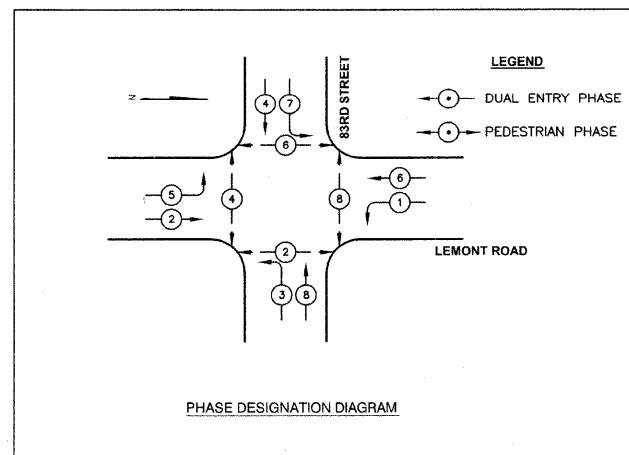


NOTES:

- EXISTING CONTROLLER AND CABINET TO BE REPLACED.
- LOOP DETECTORS TO BE CUT FOR NORTH AND SOUTHBOUND ADVANCE DETECTION AND IS TO REPLACE EXISTING MAGNETIC DETECTORS.
- EXISTING CABLE TO BE REMOVED AND REPLACED IN CONDUITS TO ADVANCE HANDHOLES.
- REMOVED EQUIPMENT SHALL REMAIN THE PROPERTY OF DUPAGE COUNTY. THE CONTRACTOR SHALL RETURN THE EXISTING CONTROLLER AND CABINET COMPLETE TO THE DUPAGE ELECTRICAL MAINTENANCE FACILITIES.



DU PAGE COUNTY D.O.T TRAFFIC SIGNAL INSTALLATION ELECTRICAL SERVICE REQUIREMENTS					TOTAL WATTAGE
TYPE	NO. LAMPS	WATTAGE		OPERATION (%)	
		INCAND.	LED		
RED BALL	12	135	10	0.60	72
YELLOW BALL	12	135	22	0.03	7.9
GREEN BALL	12	135	12	0.37	53.3
RED ARROW	4	135	5	0.85	17
YELLOW ARROW	8	135	10	0.02	1.6
GREEN ARROW	8	135	5	0.13	5.2
PED - WALK	8	90	5	0.05	2
PED - DON'T WALK	8	90	6	0.95	45.6
CONTROLLER	1	100		1.00	100
LUMINAIRE	1	310		0.50	310
TOTAL =					615

FOUNDATION/DEPTH	FT. (m)	CABLE SLACK	FT. (m)	VERTICAL	FT. (m)
TYPE A - POST	4 (1.2)	HANDHOLE	6.5 (2.0)	ALL FOUNDATIONS	3.5 (1.0)
D - CONTROLLER	4 (1.2)	DOUBLE HANDHOLE	13 (4.0)	MAST ARM (L) POLE	20+L-2=
E - M. ARM POLE		SIGNAL POST	2 (1.0)		(6m+L-0.6m)=
24" (600 mm)	10 (3.0)	CONTROLLER CAB.	1 (0.5)	BRACKET MOUNTED	13 (4.0)
30" (750 mm)	15 (4.8)	FIBER OPTIC	13 (4.0)	PED. BUTTON	4 (1.2)
		ELECTRIC SERVICE	1 (0.5)	ELECTRIC SERVICE	13.5 (4.1)
		GROUND CABLE	1 (0.5)	SERVICE TO GROUND	13.5 (4.1)
				POST MOUNTED	6 (1.8)

REVISIONS	
NAME	DATE

DUPAGE COUNTY DIVISION OF TRANSPORTATION
LEMONT ROAD & 83RD STREET
 EXISTING AND PROPOSED
 CABLE PLAN AND PHASING DIAGRAM
 SCALE: 1"=20'
 DATE: 8/21/08
 DRAWN BY: TH
 DESIGNED BY: TH
 CHECKED BY: DAZ