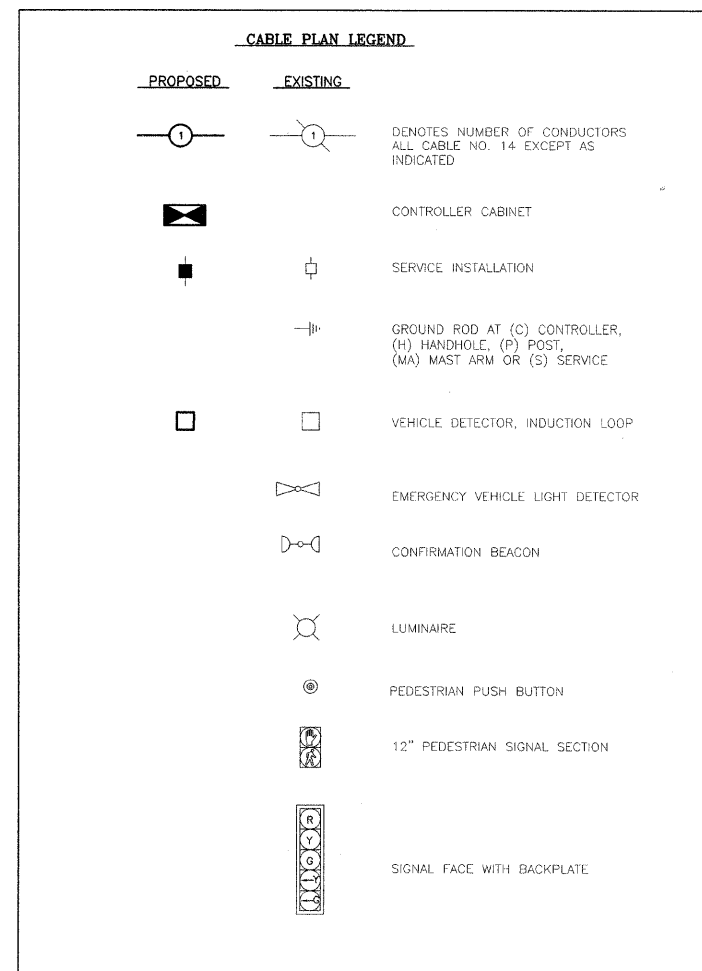
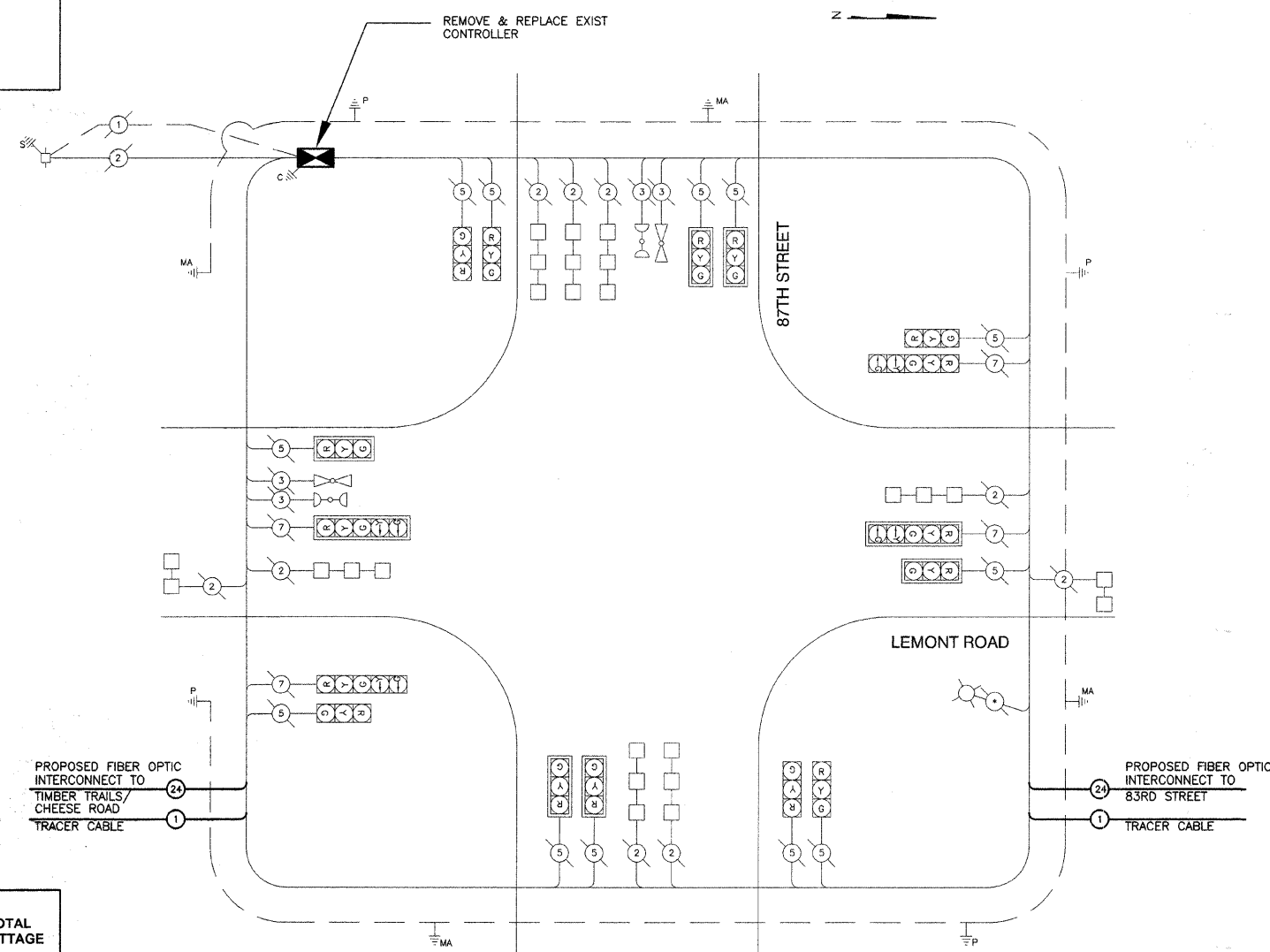
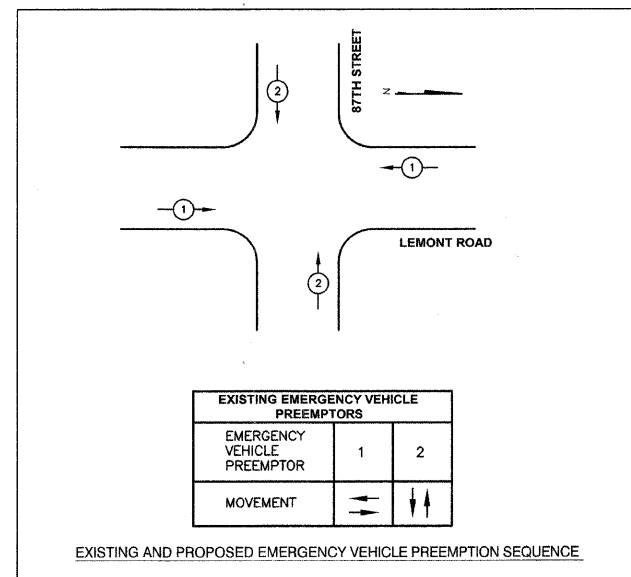


- NOTES:**
- EXISTING CONTROLLER AND CABINET TO BE REPLACED.
 - REMOVED EQUIPMENT SHALL REMAIN THE PROPERTY OF DUPAGE COUNTY. THE CONTRACTOR SHALL RETURN THE EXISTING CONTROLLER AND CABINET COMPLETE TO THE DUPAGE ELECTRICAL MAINTENANCE FACILITIES.



TYPE	NO. LAMPS	WATTAGE		OPERATION (%)	TOTAL WATTAGE
		INCAND.	LED		
RED BALL	16	135	10	0.60	96
YELLOW BALL	16	135	22	0.03	10.6
GREEN BALL	16	135	12	0.37	71
RED ARROW	0	135	5	0.85	0
YELLOW ARROW	4	135	10	0.02	0.8
GREEN ARROW	4	135	5	0.13	2.6
PED - WALK	0	90	5	0.05	0
PED - DON'T WALK	0	90	6	0.95	0
CONTROLLER	1	100		1.00	100
LUMINAIRE	1	310		0.50	310
TOTAL=					591

FOUNDATION/DEPTH	FT. (m)	CABLE SLACK	FT. (m)	VERTICAL	FT. (m)
TYPE A - POST	4 (1.2)	HANDHOLE	6.5 (2.0)	ALL FOUNDATIONS	3.5 (1.0)
D - CONTROLLER	4 (1.2)	DOUBLE HANDHOLE	13 (4.0)	MAST ARM (L) POLE	20'+L-2'
E - M. ARM POLE		SIGNAL POST	2 (1.0)		(6m+L-0.6m)=
24" (600 mm)	10 (3.0)	CONTROLLER CAB.	1 (0.5)	BRACKET MOUNTED	13 (4.0)
30" (750 mm)	15 (4.6)	FIBER OPTIC	13 (4.0)	PED. BUTTON	4 (1.2)
		ELECTRIC SERVICE	1 (0.5)	ELECTRIC SERVICE	13.5 (4.1)
		GROUND CABLE	1 (0.5)	SERVICE TO GROUND	13.5 (4.1)
				POST MOUNTED	6 (1.8)

NAME	DATE

DUPAGE COUNTY DIVISION OF TRANSPORTATION

LEMONT ROAD & 87TH STREET

EXISTING AND PROPOSED

CABLE PLAN AND PHASING DIAGRAM

SCALE: 1"=20'

DATE: 7/1/08

DRAWN BY: TH
DESIGNED BY: TH
CHECKED BY: DAZ