

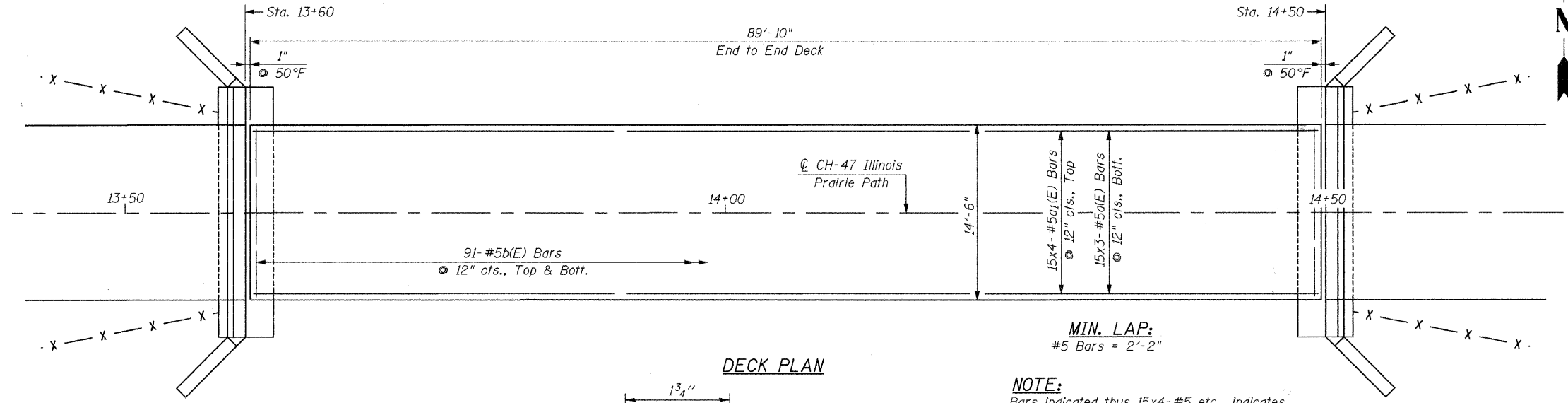
F.A.I.L. RTE.	SECTION	COUNTY	TOTAL SHEETS	SHEET NO.
99-00313-03-BT	DUPAGE	18	13	
STA.	TO STA.			
FED. ROAD DIST. NO. 1	ILLINOIS	FED. AID PROJECT		

CONTRACT NO. 63069

**SUPERSTRUCTURE
BILL OF MATERIAL**

Bar	No.	Size	Length	Shape	
a(E)	45	#5	31'-4"		
a ₁ (E)	60	#5	24'-1"		
b(E)	182	#5	14'-2"		
Concrete Superstructure				Cu. Yd.	32.3**
Reinforcement Bars, Epoxy Coated				Lb.	5,670
Preformed Joint Seal, 1 ³ / ₄ "				Ft.	29.0

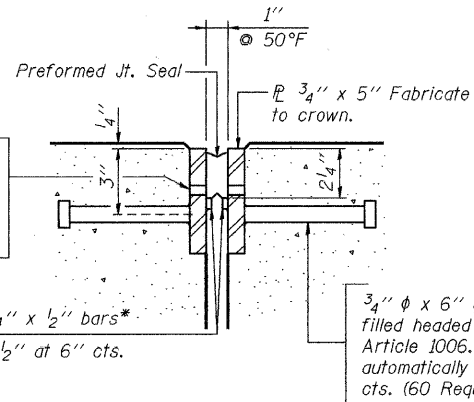
** See Abutments on Sheet S3 of S6



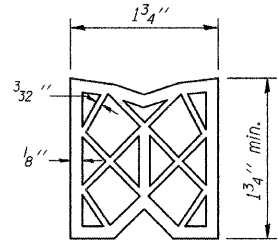
DECK PLAN

MIN. LAP:
#5 Bars = 2'-2"

NOTE:
Bars indicated thus 15x4-#5 etc., indicates 15 lines of bars with 4 lengths per line.



SECTION THRU FIXED PREFORMED JOINT SEAL
(Typ. at each Abutment)



PREFORMED JOINT SEAL

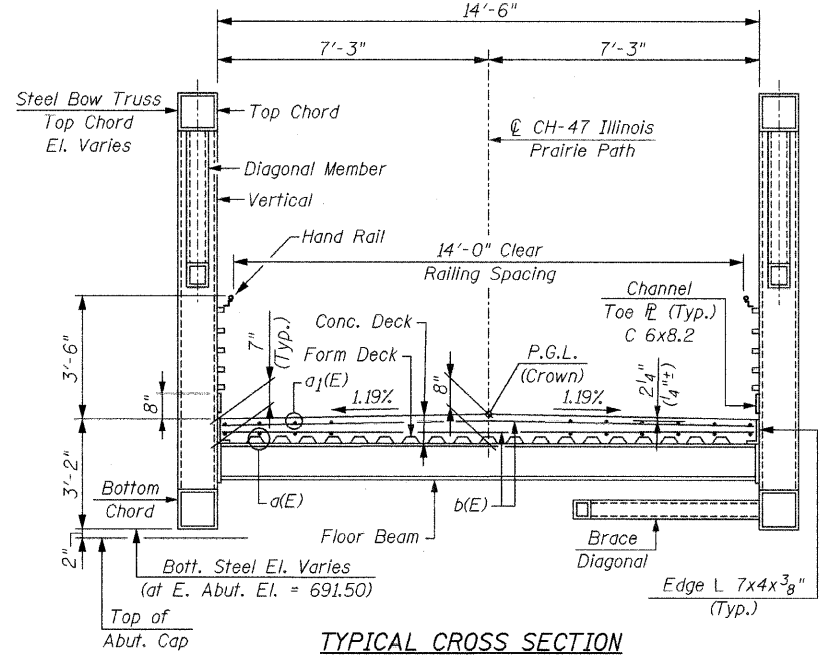
DESIGN SCOUR ELEVATION TABLE

	West Abutment	East Abutment
Design Scour Elevation (ft.)	689.67	687.80

WATERWAY INFORMATION TABLE

Drainage Area =	15.35 sq mi	Exist. Low Grade Elev. =	680.0 ft. at Station	500						
Max. Recorded H.W.E. =	688.75 ft. (1954)	Prop. Low Grade Elev. =	680.0 ft. at Station	500						
Flood	Discharge (cfs)		Waterway Opening (sf)		Natural H.W.E.	Created Head		Headwater Elevation		
	Existing	Proposed	Existing	Proposed		Existing	Proposed	Existing	Proposed	
10	Main Channel	659	659	176.98	176.98	686.30	0.58	0.58	686.88	686.88
	Relief Structure	---	---	---	---	---	---	---	---	---
	Total	659	659	176.98	176.98	686.30	0.58	0.58	686.88	686.88
50	Main Channel	822	822	207.54	207.54	686.74	0.86	0.86	687.64	687.64
	Relief Structure	---	---	---	---	---	---	---	---	---
	Total	822	822	207.54	207.54	686.74	0.86	0.86	687.64	687.64
100	Main Channel	1070	1070	249.64	249.64	687.43	1.26	1.26	688.69	688.69
	Relief Structure	---	---	---	---	---	---	---	---	---
	Total	1070	1070	249.64	249.64	687.43	1.26	1.26	688.69	688.69
Overtopping	Main Channel	---	---	---	---	---	---	---	---	---
	Relief Structure	---	---	---	---	---	---	---	---	---
	Total	---	---	---	---	---	---	---	---	---
500	Main Channel	1319	1319	287.64	287.64	688.04	1.61	1.61	689.65	689.65
	Relief Structure	---	---	---	---	---	---	---	---	---
	Total	1319	1319	287.64	287.64	688.04	1.61	1.61	689.65	689.65
10 Year Velocity through Existing Bridge = 4.29 fps					10 Year Velocity through Proposed Bridge = 4.29 fps					

DATUM: NGVD 29



TYPICAL CROSS SECTION
(Half-Through Truss Bridge With Tubular Members)

NOTE:
Handrail to meet ADA requirements.

REVISIONS	
NAME	DATE

ILLINOIS DEPARTMENT OF TRANSPORTATION

SLAB PLAN & CROSS SECTION
C.H. 47 ILLINOIS PRAIRIE PATH BRIDGE
OVER THE
EAST BRANCH OF THE DUPAGE RIVER
MILTON TOWNSHIP DuPAGE COUNTY

SCALE: DRAWN BY: F.M.
DATE: AUGUST 19, 2008 CHECKED BY: B.M.S.
CHRISTIAN-ROGE & ASSOC., INC.
CHICAGO ILLINOIS