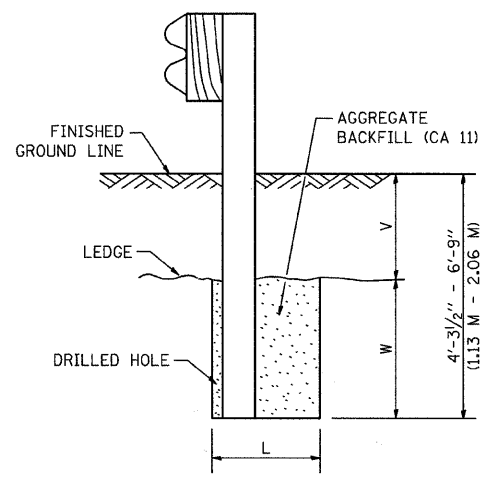


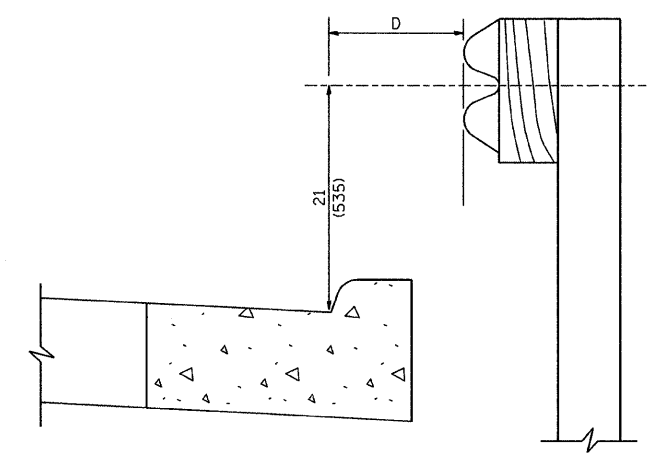
PLAN



NOTE:  
LEDGE LINE IS TOP OF ROCK  
LEDGE OR HARD SLAG FILL.

ELEVATION

FOOTING FOR POST WHEN IMPERVIOUS  
MATERIAL IS ENCOUNTERED

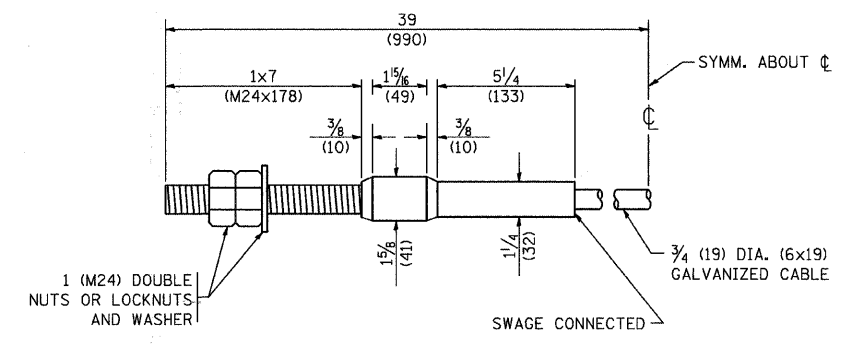
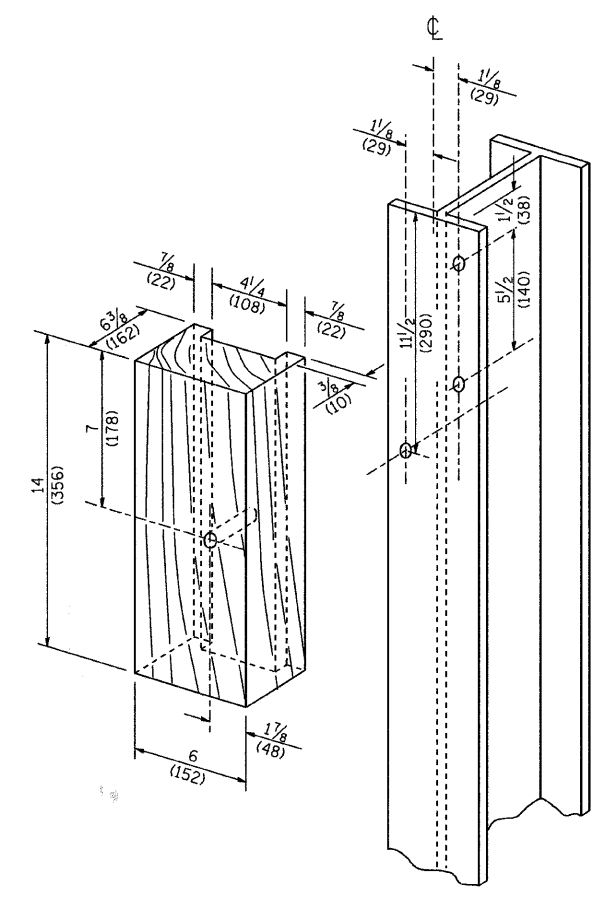


NOTE:  
IF IT IS NECESSARY FOR D TO BE MORE THAN 12 (300) AND LESS THAN 10'-0" (3.0 M) TYPE M-2 (M-5) CURB AND GUTTER (STD. 606001) SHALL BE USED IN FRONT OF AND IN ADVANCE OF THE GUARDRAIL.

GUARDRAIL PLACED BEHIND CURB

(D = 0 DESIRABLE TO 12 (300) MAXIMUM)

V	W	L	
		STEEL POST	WOOD POST
0 - 18 (0 - 460)	24 (610)	21 (530)	23 (580)
>18 - 41.5 (> 460 - 825)	12 (305)	8 (203)	10 (250)
>41.5 - 53.5 (> 825 - 1.13 M)	12 - 0 (350 - 0)	8 (203)	10 (250)



CABLE ASSEMBLY

(40,000 LBS (18,100 KG) MIN. BREAKING STRENGTH)  
TIGHTEN TO TAUT TENSION

REVISIONS	
NAME	DATE

ILLINOIS DEPARTMENT OF TRANSPORTATION

REMOVE AND REERECT  
STEEL PLATE BEAM GUARDRAIL  
(SHEET 4 OF 4)

SCALE: NONE  
DATE: 2/27/2007

DRAWN BY  
CHECKED BY

PLOT DATE = 2/27/2007  
FILE NAME = K:\data\2007\20070227\20070227.dgn  
USER = jrb  
PAGE = 4