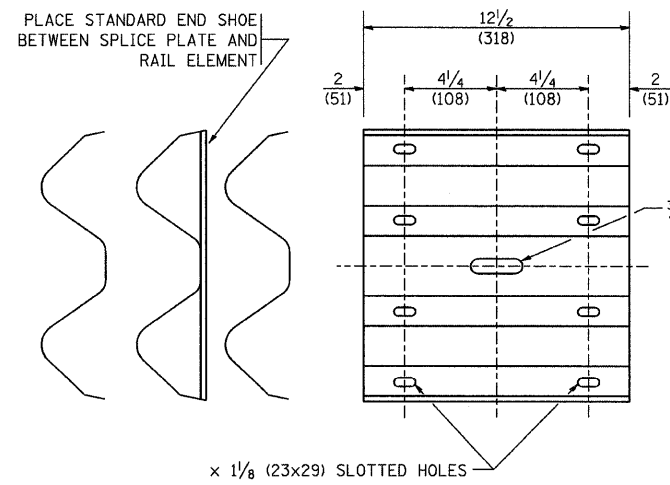
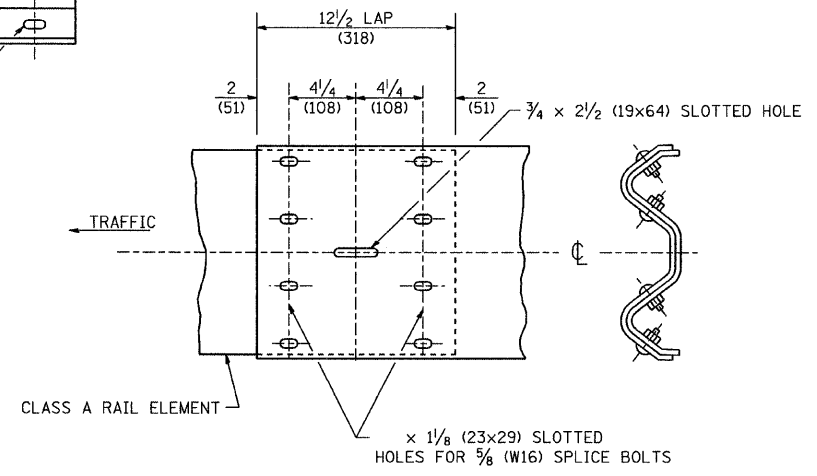


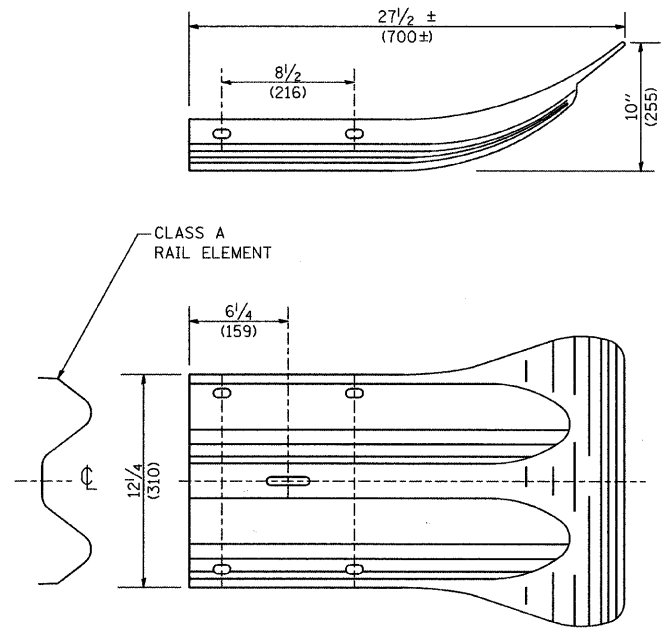
CONTRACT NO.			
F.A. RTE.	SECTION	COUNTY	TOTAL SHEETS
08-F3000-20-B7	COOK		29
SHEET NO.		20	
STA.		TO STA.	
FED. ROAD DIST. NO.		ILLINOIS FED. AID PROJECT	
CONTRACT NO. 63052			



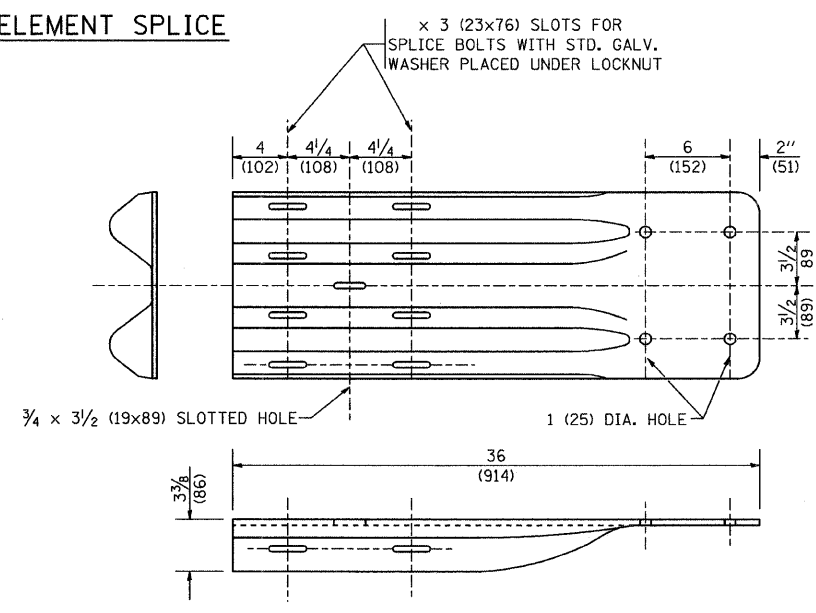
**SPLICE PLATE**  
 x 1/8 (23x29) SLOTTED HOLES



**RAIL ELEMENT SPLICE**



**END SECTION**



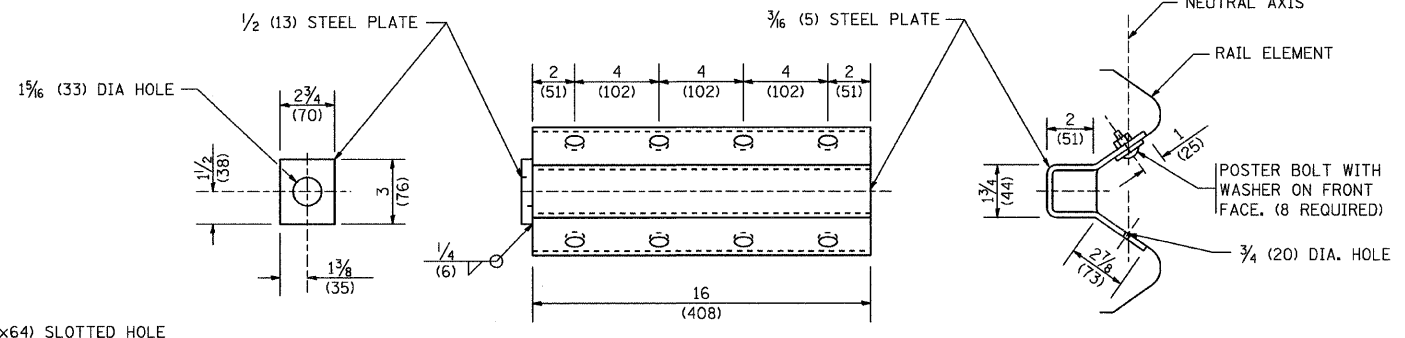
**NOTE:**

WHEN END SHOE IS ATTACHED TO A BRIDGE PARAPET WHICH HAS AN EXPANSION JOINT, THE BOLTS SHALL BE PROVIDED WITH A LOCKNUT OR DOUBLE NUT AND SHALL BE TIGHTENED ONLY TO A POINT THAT WILL ALLOW GUARDRAIL MOVEMENT.

THE STANDARD END SHOE SHALL BE ATTACHED TO THE CONCRETE WITH PRE-DRILLED OR SELF-DRILLING ANCHOR BOLTS. THE ANCHOR CONE SHALL BE SET FLUSH WITH THE SURFACE OF THE CONCRETE.

EXTERNALLY THREADED STUDS PROTRUDING FROM THE SURFACE OF THE CONCRETE WILL NOT BE PERMITTED.

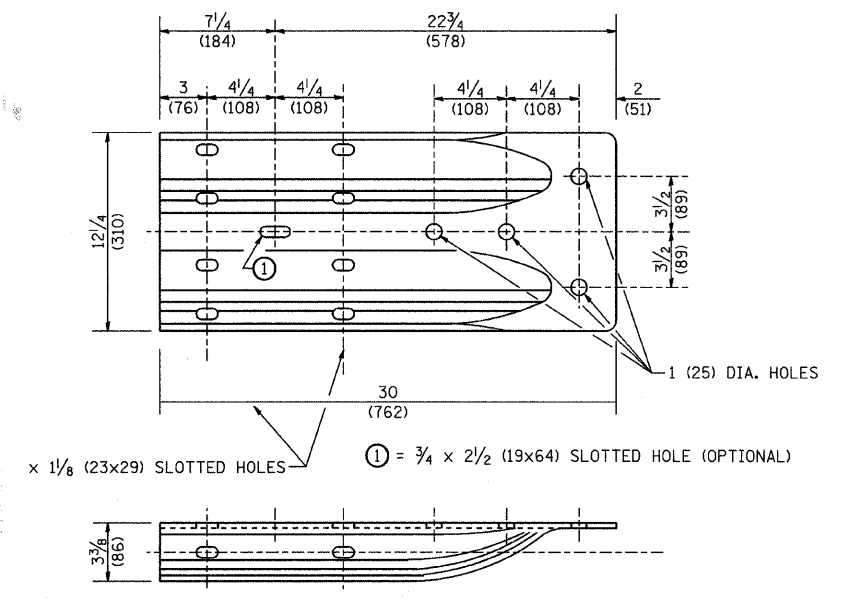
**END SHOE**



**NOTE:**

ANCHOR PLATE T SHALL BE USED TO ATTACH CABLE ASSEMBLY TO GUARDRAIL WHEN REQUIRED ON TRAFFIC BARRIER TERMINALS.

**ANCHORE PLATE T DETAILS**



**ALTERNATE END SHOE**

REVISIONS	
NAME	DATE

ILLINOIS DEPARTMENT OF TRANSPORTATION

**REMOVE AND REERECT STEEL PLATE BEAM GUARDRAIL (SHEET 3 OF 4)**

SCALE: NONE  
 DATE: 2/27/2007

DRAWN BY  
 CHECKED BY

PLOT DATE = 2/27/2007  
 FILE NAME = K:\dashed\hmo2\ldgn  
 USER NAME = hmo2  
 USER = hmo2