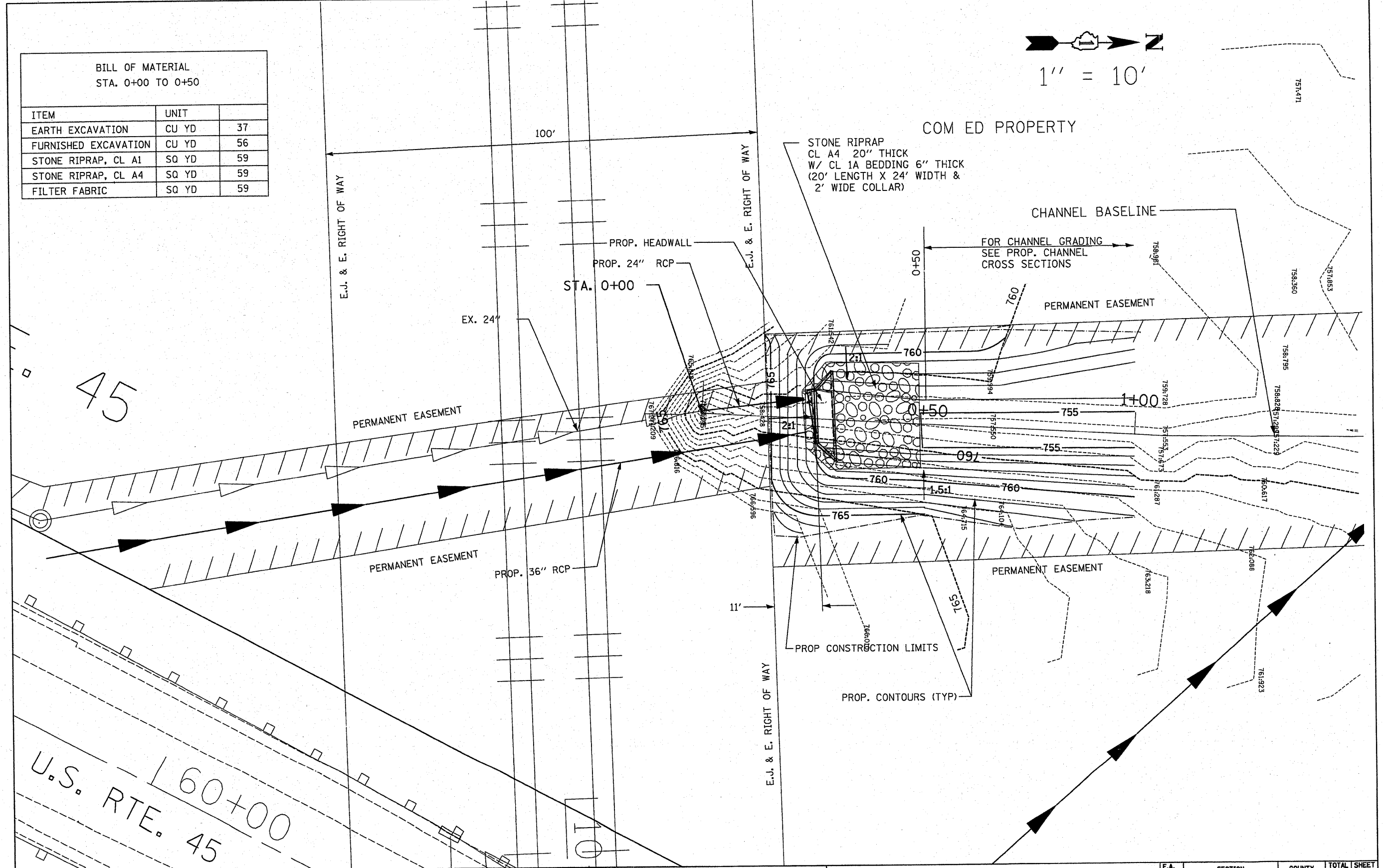
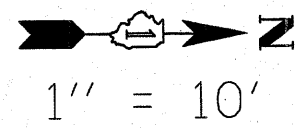


BILL OF MATERIAL
STA. 0+00 TO 0+50

ITEM	UNIT	QUANTITY
EARTH EXCAVATION	CU YD	37
FURNISHED EXCAVATION	CU YD	56
STONE RIPRAP, CL A1	SQ YD	59
STONE RIPRAP, CL A4	SQ YD	59
FILTER FABRIC	SQ YD	59



U.S. RTE. 45
160+00

FILE NAME =	USER NAME = #USER#	DESIGNED -	REVISED -
#FILE#		DRAWN -	REVISED -
	PLOT SCALE = #SCALE#	CHECKED -	REVISED -
	PLOT DATE = #DATE#	DATE -	REVISED -

STATE OF ILLINOIS
DEPARTMENT OF TRANSPORTATION

PROPOSED GRADING AND RIPRAP
24" & 36" HEADWALL
SCALE: 1" = 10' SHEET NO. OF SHEETS STA. TO STA.

F.A. RTE.	SECTION	COUNTY	TOTAL SHEETS	SHEET NO.
330	104-T-3	WILL	32	17
FED. ROAD DIST. NO. ILLINOIS FED. AID PROJECT			CONTRACT NO. 60B09	

E:\11253636\60B09\60B09.dwg 2/12/2005 10:13:03 AM