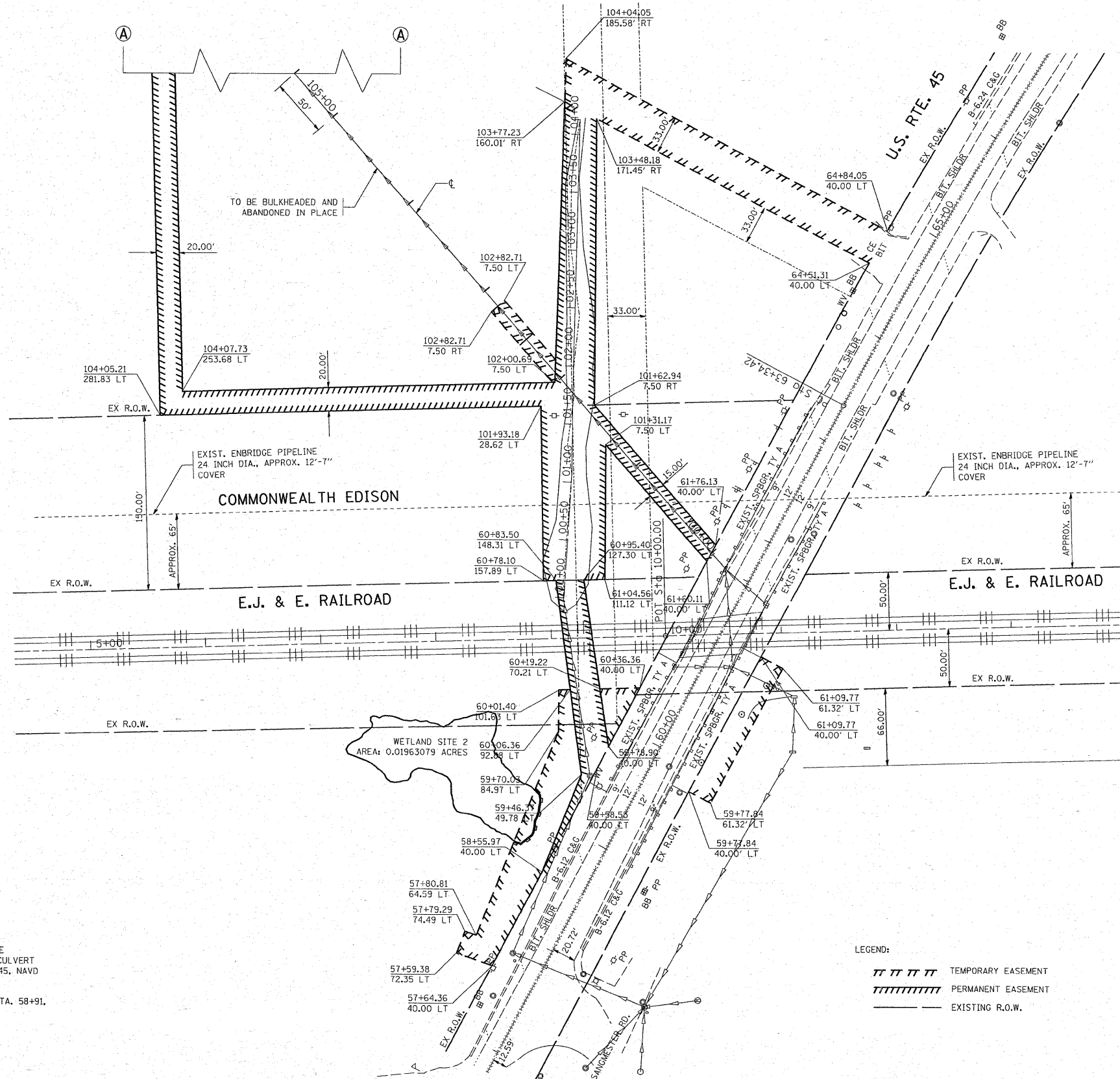


SECTION THRU A-A

WETLAND SITE 1
AREA: 0.7361278 ACRES

BENCHMARKS:

- BM #1 USGS BM "Q26" FOUND DISK STAMPED "Q26" IN THE CENTER OF THE WESTERLY HEADWALL OF THE BOX CULVERT 700 FT. NORTH OF THE EJ & E RR BRIDGE ON US 45, NAVD 88 DATUM ELEV. = 758.06
- TBM #1 PK NAIL SET IN TOP OF WOOD GUARD RAIL POST STA. 58+91, OFFSET 24.7 FT. RIGHT OF US 45, ELEV. = 759.40
- TBM #2 X-CUT IN RIM OF MANHOLE #9, ELEV. = 748.45



LEGEND:

- TEMPORARY EASEMENT
- //// PERMANENT EASEMENT
- EXISTING R.O.W.

FILE NAME =
ca\proj\projects\p118604\design_00.dgn

USER NAME = galbannb
DRAWN -
PLOT SCALE = 52.9396' / IN.
CHECKED -
DATE -

DESIGNED -
DRAWN -
CHECKED -
DATE -

REVISED -
REVISED -
REVISED -
REVISED -

STATE OF ILLINOIS
DEPARTMENT OF TRANSPORTATION

US 45 (LA GRANGE ROAD) UNDER EJ & E RR VIADUCT
EASEMENTS AND WETLAND LOCATIONS

SCALE: 1 : 50 SHEET NO. OF SHEETS STA. TO STA.

F.A.P. RTE.	SECTION	COUNTY	TOTAL SHEETS	SHEET NO.
330	104 T-3	WILL	32	6
CONTRACT NO. 60B09				
FED. ROAD DIST. NO. 1 ILLINOIS FED. AID PROJECT				