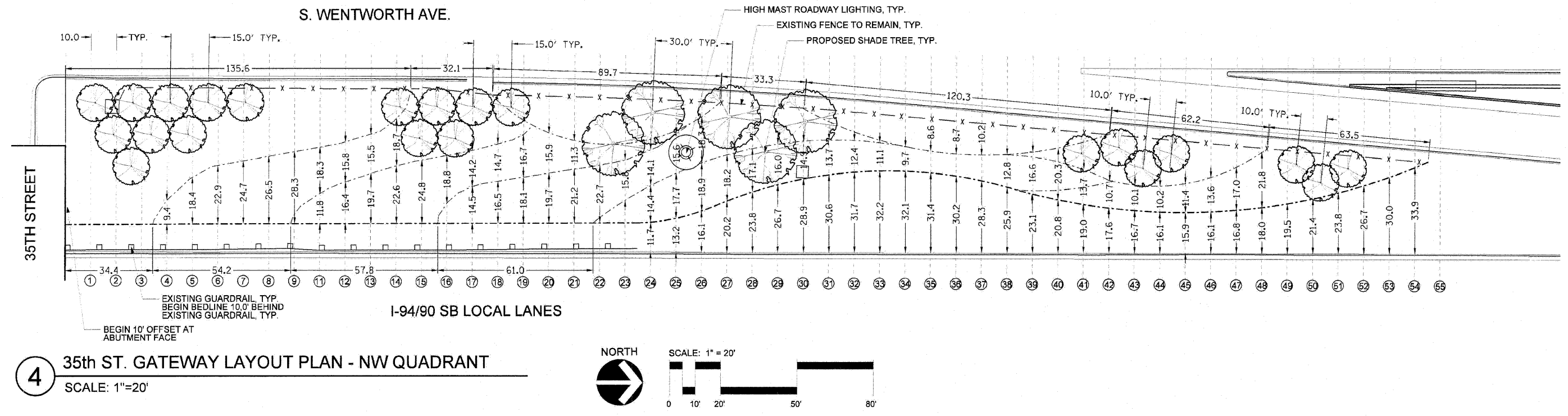


- GENERAL NOTES:
1. SEE SHEETS L-03 AND L-04 FOR LANDSCAPE PLANS.
 2. SEE SHEET L-07 FOR IRRIGATION PLAN.
 3. SEE SHEET L-08 FOR LANDSCAPE DETAILS.
 4. SEE SHEET L-09 FOR OVERALL PLANT LIST.
 5. THE LOCATION OF ALL PLANT MATERIAL SHALL BE STAKED BY CONTRACTOR FOR APPROVAL BY ENGINEER IN FIELD, PRIOR TO INSTALLATION. INDIVIDUAL TREES SHALL BE STAKED WITH IDENTITIES WRITTEN ON STAKES. SHRUB BEDS SHALL BE OUTLINED WITH STAKES AND PAINTED LINES.
 6. ALL ROADWAY, SEWER, ELECTRICAL AND OTHER UTILITY WORK (EXCEPT FOR IRRIGATION) SHALL BE CONSTRUCTED BY OTHERS. ADJUSTMENTS TO INSTALLED UTILITIES MAY HAVE BEEN MADE DURING CONSTRUCTION THAT ARE NOT INDICATED ON THESE PLANS. CONTRACTOR SHALL COORDINATE LANDSCAPE AND IRRIGATION WORK WITH WORK BY OTHER CONTRACTORS AND SHALL NOTIFY ENGINEER OF POTENTIAL CONFLICTS. CONTRACTOR SHALL PROTECT ALL UTILITIES AND OTHER FACILITIES, NEW AND EXISTING, DURING THE COURSE OF INSTALLATION OF THE LANDSCAPE AND IRRIGATION SYSTEMS. REPAIRS SHALL BE PERFORMED BY THE CONTRACTOR AT NO ADDITIONAL COST TO IDOT OR CDOT.
 7. NO STOCK-PILING OR STAGING ALLOWED ON CHICAGO PARKWAYS.



REVISIONS	
NAME	DATE
REVISED BY BBA	4-25-08
REVISED BY BBA	9/19/08

ILLINOIS DEPARTMENT OF TRANSPORTATION

35th ST. GATEWAY LAYOUT PLAN
WESTERN QUADRANTS

SCALE: 1"=40'
DATE: MAR 13, 2008
DRAWN BY: RPS
CHECKED BY: JAE