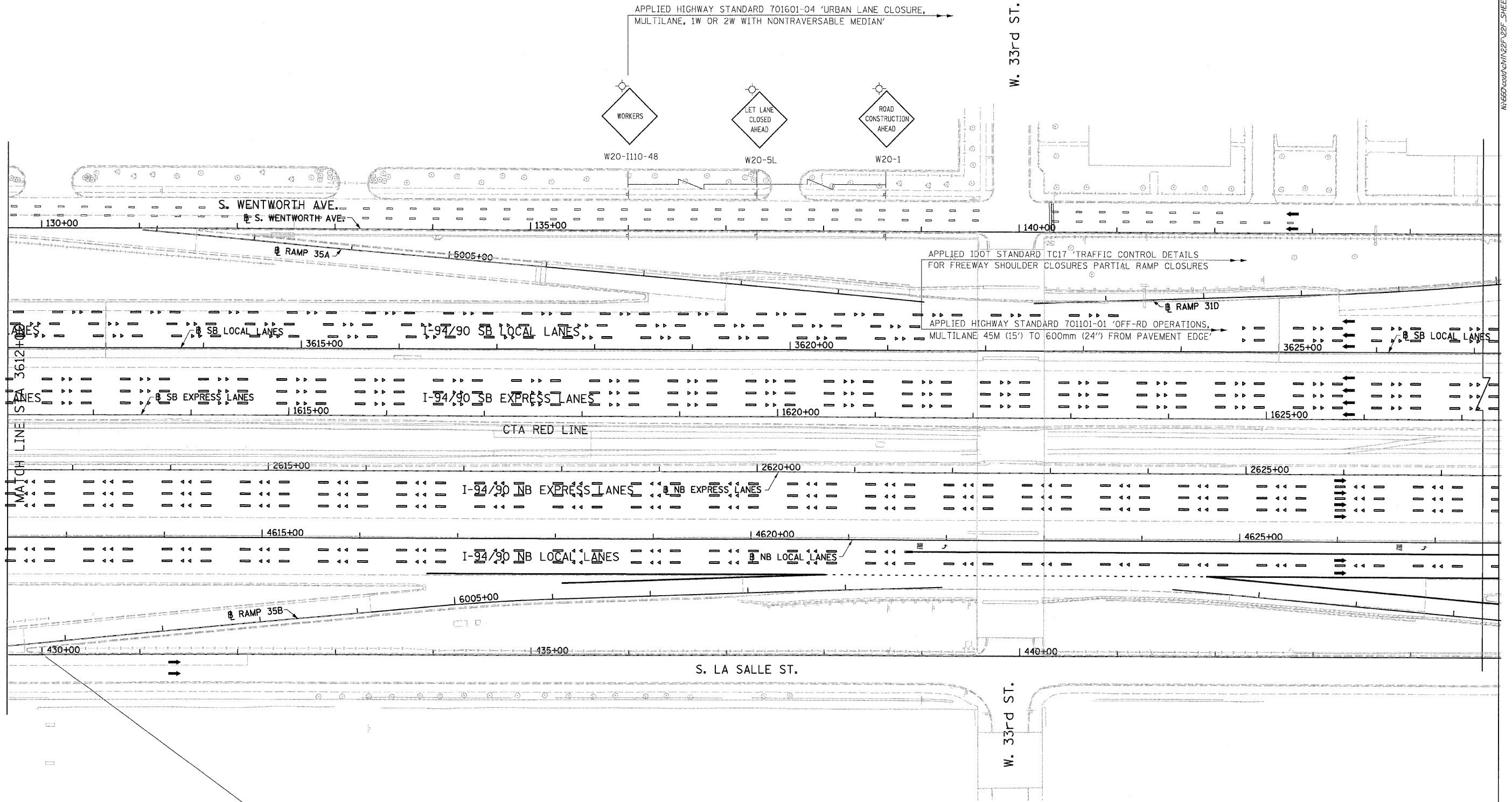


F.A.I.	SECTION	COUNTY	TOTAL SHEETS	SHEET NO.
94/90	*	COOK	38	10
STA.	TO STA.			
FED. ROAD DIST. NO.	ILLINOIS	FED. AID PROJECT		
60A79		2005-073 LS		



APPLIED HIGHWAY STANDARD 701601-04 'URBAN LANE CLOSURE, MULTILANE, 1W OR 2W WITH NONTRAVERSABLE MEDIAN'

APPLIED IDOT STANDARD TC17 'TRAFFIC CONTROL DETAILS FOR FREEWAY SHOULDER CLOSURES PARTIAL RAMP CLOSURES'

APPLIED HIGHWAY STANDARD 701101-01 'OFF-RD OPERATIONS, MULTILANE 45M (15') TO 600mm (24") FROM PAVEMENT EDGE'

APPLIED IDOT STANDARD TC17 'TRAFFIC CONTROL DETAILS FOR FREEWAY SHOULDER CLOSURES PARTIAL RAMP CLOSURES'

BOWMAN, BARRETT & ASSOCIATES INC
CONSULTING ENGINEERS
Chicago, Illinois
312.228.0100
www.bbdaa.com

REVISIONS	
NAME	DATE

ILLINOIS DEPARTMENT OF TRANSPORTATION
F.A.I. 94/90 (DAN RYAN EXPRESSWAY)
GATEWAY LANDSCAPING & IRRIGATION @ 35TH
MAINTENANCE OF TRAFFIC

SCALE: 1"=50
DATE: 03/13/07

DRAWN BY: RA
CHECKED BY: RS

MOT-02 3/15/2008