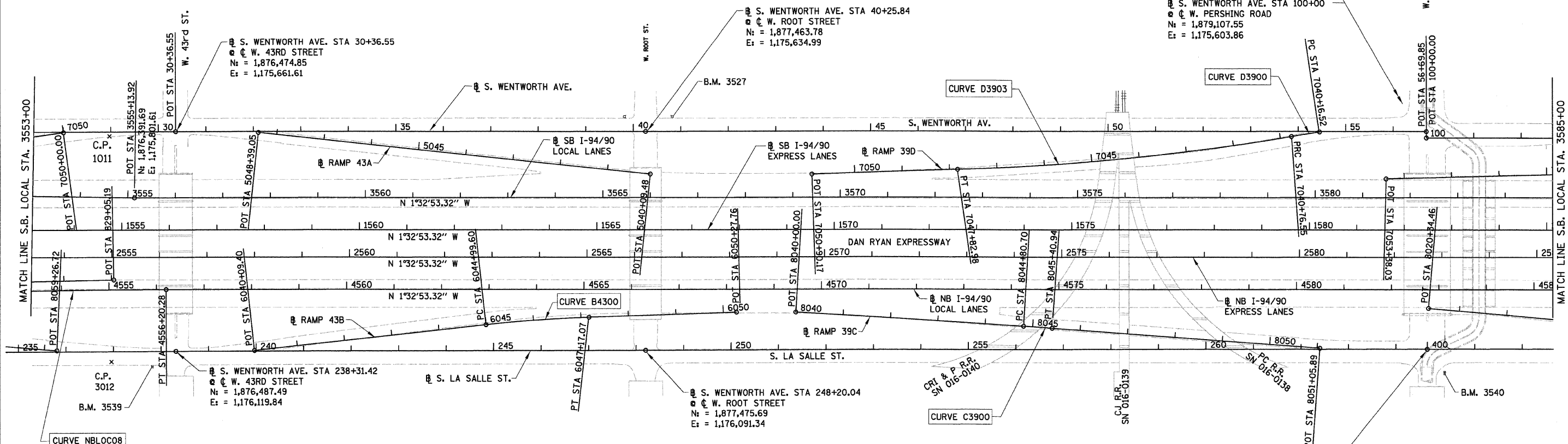


F.A.I.	SECTION	COUNTY	TOTAL SHEETS	SHEET NO.
94/90		COOK	38	5
STA.		TO STA.		
FED. ROAD DIST. NO.		ILLINOIS	FED. AID PROJECT	
60A79		*2005-073 LS		

PROP. CURVE D3903
P.I. STA = 7044+30.25
Nt = 1,878,475.96
E = 1,175,675.24
Δ = 7° 22' 41" (RT)
D = 1° 02' 40"
R = 5,486.00'
T = 353.70'
L = 706.43'
E = 11.39'
P.C. STA = 7040+76.55
Nt = 1,878,823.36
E = 1,175,608.75
P.T. STA = 7047+82.98
Nt = 1,878,122.90
E = 1,175,696.57

PROP. CURVE D3900
P.I. STA = 7040+46.54
Nt = 1,878,852.84
E = 1,175,603.11
Δ = 0° 47' 26" (LT)
D = 1° 19' 02"
R = 4,350.00'
T = 30.02'
L = 60.03'
E = 0.10'
P.C. STA = 7040+16.52
Nt = 1,878,882.40
E = 1,175,597.87
P.T. STA = 7040+76.55
Nt = 1,878,823.36
E = 1,175,608.75



PROP. CURVE NBLOC08
P.I. STA = 4554+19.42
Nt = 1,876,262.66
E = 1,175,997.17
Δ = 1° 32' 04" (RT)
D = 0° 22' 55"
R = 15,000.00'
T = 200.89'
L = 401.75'
E = 1.35'
P.C. STA = 4552+18.53
Nt = 1,876,062.07
E = 1,176,007.97
P.T. STA = 4556+20.28
Nt = 1,876,463.47
E = 1,175,991.74

PROP. CURVE B4300
P.I. STA = 6046+08.39
Nt = 1,877,246.14
E = 1,176,032.59
Δ = 4° 21' 02" (RT)
D = 2° 00' 02"
R = 2,864.00'
T = 108.79'
L = 217.47'
E = 2.07'
e = 3.0%
S.A. = STA 6044+79.60
TO 6045+09.60
S.R. = STA 6047+07.07
TO 6047+37.07
P.C. STA = 6044+99.60
Nt = 1,877,138.36
E = 1,176,047.37
P.T. STA = 6047+17.07
Nt = 1,877,354.72
E = 1,176,026.03

PROP. CURVE C3900
P.I. STA = 8045+10.82
Nt = 1,878,300.35
E = 1,176,021.08
Δ = 0° 41' 25" (RT)
D = 1° 08' 45"
R = 5,000.00'
T = 30.12'
L = 60.24'
E = 0.09'
P.C. STA = 8044+80.70
Nt = 1,878,270.25
E = 1,176,020.07
P.T. STA = 8045+40.94
Nt = 1,878,330.44
E = 1,176,022.46

S. WENTWORTH AVE. STA 56+69.85
W. PERSHING ROAD
Nt = 1,879,107.55
E = 1,175,590.76

S. WENTWORTH AVE. STA 100+00
W. PERSHING ROAD
Nt = 1,879,107.55
E = 1,175,603.86

S. WENTWORTH AVE. STA 40+25.84
W. ROOT STREET
Nt = 1,877,463.78
E = 1,175,634.99

S. WENTWORTH AVE. STA 30+36.55
W. 43RD ST.
Nt = 1,876,474.85
E = 1,175,661.61

S. WENTWORTH AVE. STA 238+31.42
W. 43RD STREET
Nt = 1,876,487.49
E = 1,176,119.84

S. WENTWORTH AVE. STA 248+20.04
W. ROOT STREET
Nt = 1,877,475.69
E = 1,176,091.34

S. LASALLE ST. STA 400+00.00 AH
STA 264+66.03 BK
W. PERSHING ROAD
Nt = 1,879,121.00
E = 1,176,043.89

- NOTES:
- AVERAGE GRID TO GROUND CONVERSION
FACTOR = 1.000010988654360
 - FOR BENCH MARK INFORMATION, SEE SHEET ALT-16 OF ALIGNMENT PLAN SHEETS.
 - FOR RAMP P.O.T. INFORMATION, SEE SHEET ALT-16 OF ALIGNMENT PLAN SHEETS.

REVISIONS	
NAME	DATE

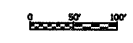
ILLINOIS DEPARTMENT OF TRANSPORTATION
F.A.I. 94/90 (DAN RYAN EXPRESSWAY)
GATEWAY LANDSCAPING & IRRIGATION @ 35TH

ALIGNMENT PLAN

SCALE: 1"=100'
DATE: 03/13/07

DRAWN BY: JDC
CHECKED BY: RS

BOWMAN, BARRETT & ASSOCIATES INC.
CONSULTING ENGINEERS
Chicago, Illinois
312.228.0100
www.bbandainc.com



3/15/2008 12:29 AM