

STATE OF ILLINOIS  
DEPARTMENT OF TRANSPORTATION

F.A.P. RTE.	SECTION	COUNTY	TOTAL SHEETS	SHEET NO.
575	2020-092-1	WILL	23	1
		ILLINOIS	CONTRACT NO. 62L70	

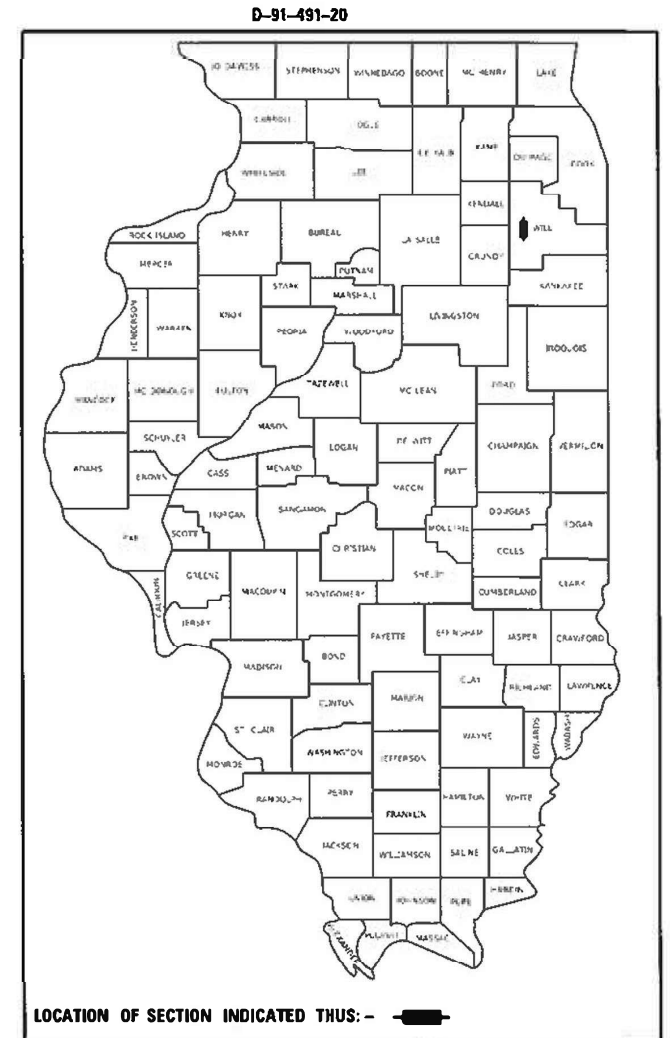
FOR INDEX OF SHEETS, SEE SHEET NO.

THIS PROJECT IS LOCATED IN THE CITIES OF CREST HILL AND JOLIET

PROPOSED  
HIGHWAY PLANS

FAP ROUTE 0575: US 30 (PLAINFIELD RD.)  
LARKIN AVE. TO US 30 (CENTER ST. SB)  
SECTION 2020-092-1  
CRACK AND JOINT SEALING

WILL COUNTY



TRAFFIC DATA:

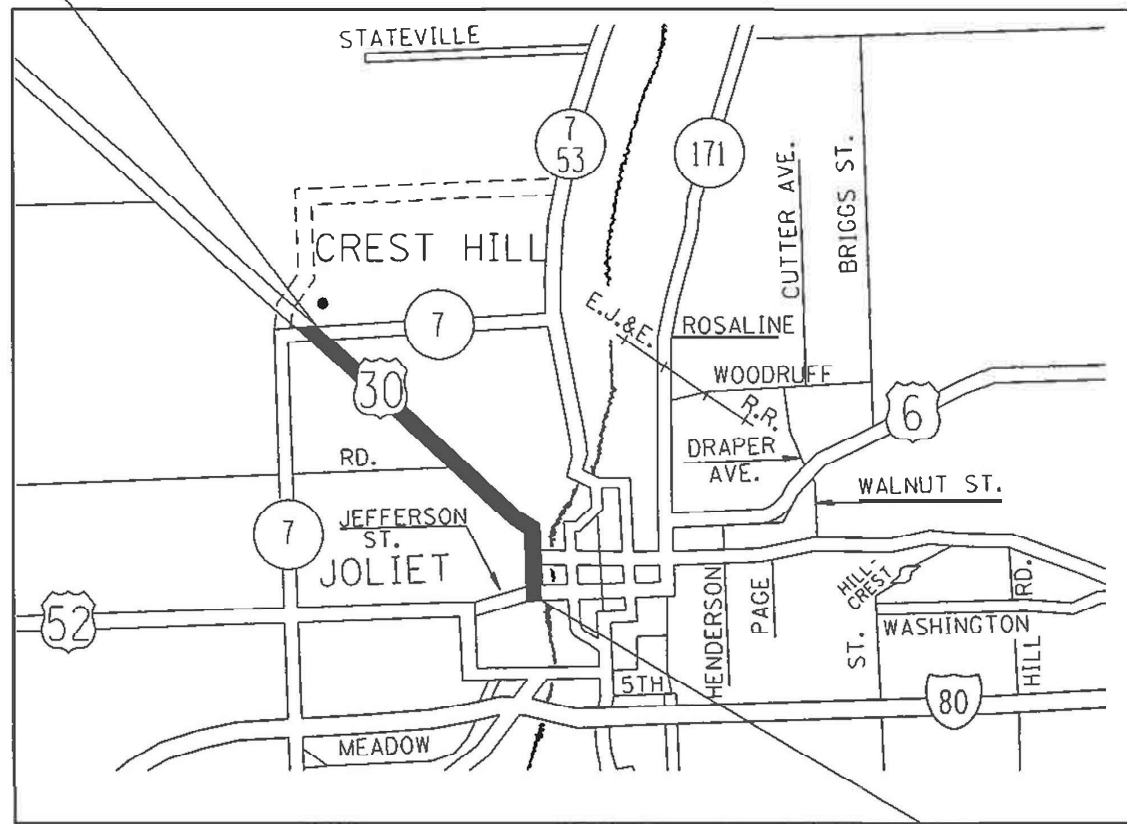
US 30  
2019 ADT = 11,900 TO 20,000  
POSTED SPEED LIMIT = 30-35 MPH

IMPROVEMENT ENDS  
STA. 165 + 16

R10 E

C-91-289-20

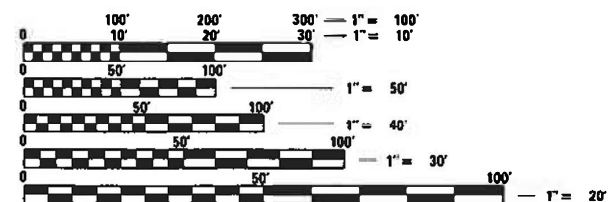
T35 N , T36 N



LOCKPORT AND JOLIET TOWNSHIPS

GROSS LENGTH = 15138 FT. = 2.87 MILE

IMPROVEMENT BEGINS  
STA. 13 + 78



FULL SIZE PLANS HAVE BEEN PREPARED USING STANDARD ENGINEERING SCALES. REDUCED SIZED PLANS WILL NOT CONFORM TO STANDARD SCALES. IN MAKING MEASUREMENTS ON REDUCED PLANS, THE ABOVE SCALES MAY BE USED.

J.U.L.I.E.  
JOINT UTILITY LOCATION INFORMATION FOR EXCAVATORS  
1-800-892-0123  
OR 811

PROJECT ENGINEER DANIEL WILGREEN (847) 705-4240  
PROJECT MANAGER FAWAD AQUEEL (847) 705-4247

CONTRACT NO. 62L70

STATE OF ILLINOIS  
DEPARTMENT OF TRANSPORTATION

SUBMITTED June 18 20 20  
*Anthony J. Rungtja / AS*  
REGIONAL ENGINEER

October 2, 2020  
*Scott A. Elk*  
ENGINEER OF DESIGN AND ENVIRONMENT

October 2, 2020  
*James J. ...*  
DIRECTOR OF HIGHWAYS PROJECT IMPLEMENTATION

PRINTED BY THE AUTHORITY  
OF THE STATE OF ILLINOIS

## INDEX OF SHEETS

SHEET NO.	DESCRIPTION
1	COVER SHEET
2	INDEX OF SHEETS, STATE STANDARDS, AND GENERAL NOTES
3-4	SUMMARY OF QUANTITIES
5-10	PROPOSED PLANS AND PAVEMENT MARKING PLANS
11	CRACK & JOINT SEALING DETAIL
12	TRAFFIC CONTROL AND PROTECTION FOR SIDE ROADS, INTERSECTIONS, AND DRIVEWAYS (TC-10)
13	DISTRICT ONE TYPICAL PAVEMENT MARKINGS (TC-13)
14	TRAFFIC CONTROL AND PROTECTION AT TURN BAYS TO REMAIN OPEN TO TRAFFIC (TC-14)
15	ARTERIAL ROAD INFORMATION SIGNING (TC-22)
16-23	DETECTOR LOOP SHEETS (FOR INFORMATIONAL PURPOSES ONLY) AT LARKIN AVE., RT 7/THEODORE ST., INGALLS AVE., RAYNOR AVE. WESTERN AVE. AND US 30/CENTER ST. SB

## HIGHWAY STANDARDS

STANDARD NO.	DESCRIPTION
000001-07	STANDARD SYMBOLS, ABBREVIATIONS AND PATTERNS
442101-09	CLASS B PATCHES
442201-03	CLASS C AND D PATCHES
701301-04	LANE CLOSURE, 2L, 2W SHORT TIME OPERATIONS
701311-03	LANE CLOSURE 2L, 2W, MOVING OPERATIONS - DAY ONLY
701427-05	LANE CLOSURE, MULTI-LANE, INTERMITTENT OR MOVING OPERATIONS, FOR SPEEDS < 40 MPH
701501-06	URBAN LANE CLOSURE, 2L, 2W UNDIVIDED
701606-10	URBAN SINGLE LANE CLOSURE, MULTILANE, 2W WITH MOUNTABLE MEDIAN
701701-10	URBAN SINGLE LANE CLOSURE, MULTILANE INTERSECTION
701801-06	SIDEWALK, CORNER OR CROSSWALK CLOSURE
701901-08	TRAFFIC CONTROL DEVICES

## GENERAL NOTES

- BEFORE STARTING ANY EXCAVATION, THE CONTRACTOR SHALL CALL "J.U.L.I.E." AT (800) 892-0123 OR 811 FOR FIELD LOCATIONS OF BURIED ELECTRIC, TELEPHONE AND GAS UTILITIES. (48 HOUR NOTIFICATION IS REQUIRED)
- ALL DAMAGE TO EXISTING PAVEMENT MARKINGS OR RAISED REFLECTIVE PAVEMENT MARKERS OUTSIDE THE REMOVAL LINES SHOWN ON THE PLANS SHALL BE REPLACED AT NO ADDITIONAL COSTS TO THE DEPARTMENT.
- THE CONTRACTOR WILL NOT BE ALLOWED TO SET UP A YARD OR FIELD OFFICE ON STATE PROPERTY WITHOUT WRITTEN PERMISSION FROM THE DEPARTMENT.
- THE CONTRACTOR SHALL COORDINATE CONSTRUCTION ACTIVITIES WITH UTILITY COMPANIES OF THE CITIES OF CREST HILL AND JOLIET.
- IT SHALL BE THE CONTRACTORS RESPONSIBILITY TO VERIFY ALL DIMENSIONS AND CONDITIONS EXISTING IN THE FIELD PRIOR TO CONSTRUCTION AND ORDERING OF MATERIALS.
- BEFORE BEGINNING ANY WORK, THE CONTRACTOR SHALL RETAIN AND RECORD FOR FUTURE REFERENCE, ALL EXISTING PAVEMENT MARKING LINES (AND RAISED REFLECTIVE PAVEMENT MARKERS) IN ORDER THAT THESE LOCATIONS CAN BE RE-ESTABLISHED FOR STRIPING. EXACT LOCATIONS OF ALL PAVEMENT MARKINGS SHALL BE AS DIRECTED BY THE RESIDENT ENGINEER.
- THE CONTRACTOR SHALL CONTACT THE DISTRICT ONE TRAFFIC CONTROL SUPERVISOR AT (847) 705-4470 A MINIMUM OF 72 HOURS IN ADVANCE OF BEGINNING WORK.
- THE ENGINEER SHALL CONTACT THE AREA TRAFFIC FIELD ENGINEER ERIC CAMPOS AT ERIC.CAMPOS@illinois.gov A MINIMUM OF TWO (2) WEEKS PRIOR TO PLACEMENT OF PERMANENT PAVEMENT MARKINGS
- ALL CRACK ROUTING & JOINT RESEALING LOCATIONS WILL BE DETERMINED IN THE FIELD BY THE ENGINEER, CRACK ROUTING SHALL BE OMITTED WHERE VEHICLE DETECTOR LOOPS & RAISED REFLECTIVE PAVEMENT MARKERS ARE PRESENT IN THE PAVEMENT.
- MATERIALS RESULTING FROM THE ROUTING OF CRACKS IN THE EXISTING PAVEMENT MAYBE PLACED, SHAPED AND COMPACTED TO THE SATISFACTION OF THE ENGINEER ALONG EXISTING AGGREGATE SHOULDERS ADJACENT TO THE PAVEMENT. ALL MATERIALS RESULTING FROM THE ROUTING OF CRACKS IN PAVEMENT WITHOUT AGGREGATE SHOULDERS AND SURPLUS MATERIALS RESULTING FROM THE ROUTING OF CRACKS IN PAVEMENT WITH AGGREGATE SHOULDERS, WHERE ALL MATERIALS ARE NOT PLACED ALONG EXISTING AGGREGATE SHOULDERS, SHALL BE DISPOSED OF AS SPECIFIED IN ARTICLE 202.03 OF THE STANDARD SPECIFICATIONS. OLD SEALANTS REMOVED PRIOR TO ROUTING SHALL BE DISPOSED OF AS SPECIFIED IN ARTICLE 202.03. THIS WORK WILL NOT BE PAID FOR SEPARATELY, BUT THE COST SHALL BE CONSIDERED AS INCLUDED IN THE CONTRACT UNIT PRICE FOR THE CONSTRUCTION ITEMS INVOLVED, AND NO ADDITIONAL COMPENSATION WILL BE ALLOWED.
- MODIFIED URETHANE PAVEMENT MARKING SHALL BE PLACED IMMEDIATELY AFTER C&J SEALER TEMPERATURE HAS COOLED DOWN AND DOES NOT AFFECT THE APPLICATION OF THE MODIFIED URETHANE PAVEMENT MARKING.
- DO NOT SCALE PLANS FOR CONSTRUCTION DIMENSIONS.

HOT-MIX ASPHALT MIXTURE REQUIREMENTS		QUALITY MANAGEMENT PROGRAM (QMP)
MIXTURE TYPE	AIR NODES @ NPDES	
PATCHING		
CLASS D PATCHES (HOT-MIX BINDER IL-19.0)	4.0% @ 70 GYR	OC/OA
QMP DESIGNATION: QUALITY CONTROL/QUALITY ASSURANCE (OC/OA)		

**NOTES:**

THE UNIT WEIGHT USED TO CALCULATE ALL HMA MIXTURES IS 112 LBS/SQ YD/IN.

THE "AC TYPE" FOR POLYMERIZED HMA MIXES SHALL BE "SBS/SBR PG 76-22" AND FOR NON-POLYMERIZED HMA THE "AC TYPE" SHALL BE "PG 64-22" UNLESS MODIFIED BY DISTRICT ONE SPECIAL PROVISIONS.

FOR USE OF RECYCLED MATERIALS SEE DISTRICT ONE SPECIAL PROVISIONS.

QUALITY MANAGEMENT PROGRAM (QMP) IDENTIFIES THE PARTICULAR QUALITY CONTROL SPECIFICATION THAT APPLIES TO THE HMA MIXTURE.

MODEL: Default  
FILE: \\nas01c.pw.state.il.us\pub\room\ad\illinois.gov\PI\DOT\Documents\IBDOT\_Offices\District\_1\Projects\ID19120\CaddData\Design\ID19120-shl-generates.dgn

USER NAME = Valladoliv	DESIGNED -	REVISED -
	DRAWN -	REVISED -
PLOT SCALE = 100.0000 ' / in.	CHECKED -	REVISED -
PLOT DATE = 8/18/2020	DATE -	REVISED -

### STATE OF ILLINOIS DEPARTMENT OF TRANSPORTATION

### INDEX OF SHEETS, STATE STANDARDS & GENERAL NOTES US 30 /PLAINFIELD RD. (LARKIN AVE. TO US 30 (CENTER ST. SB))

SCALE: SHEET OF SHEETS STA. TO STA.

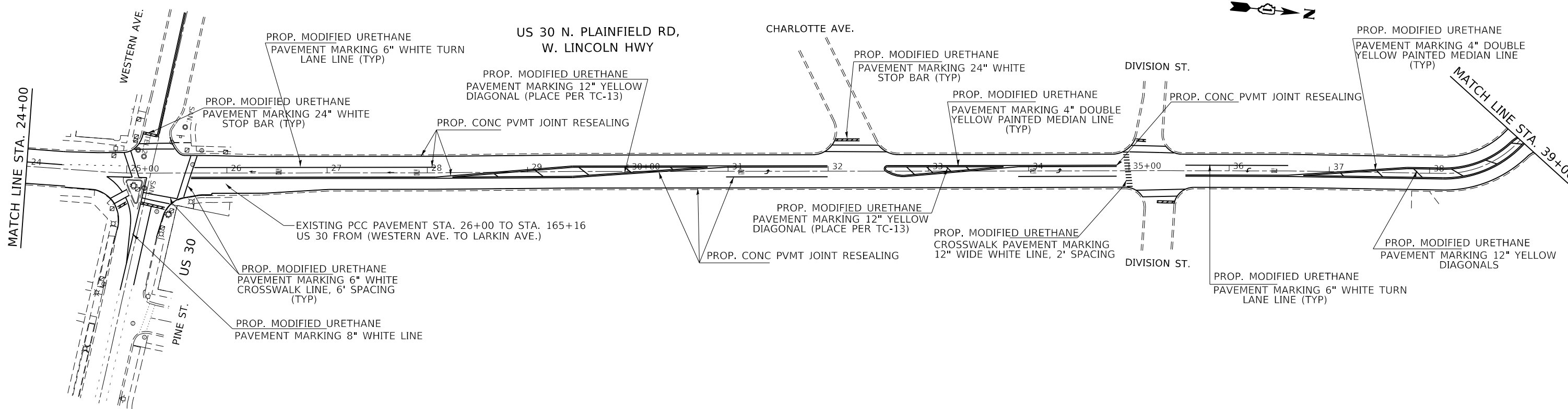
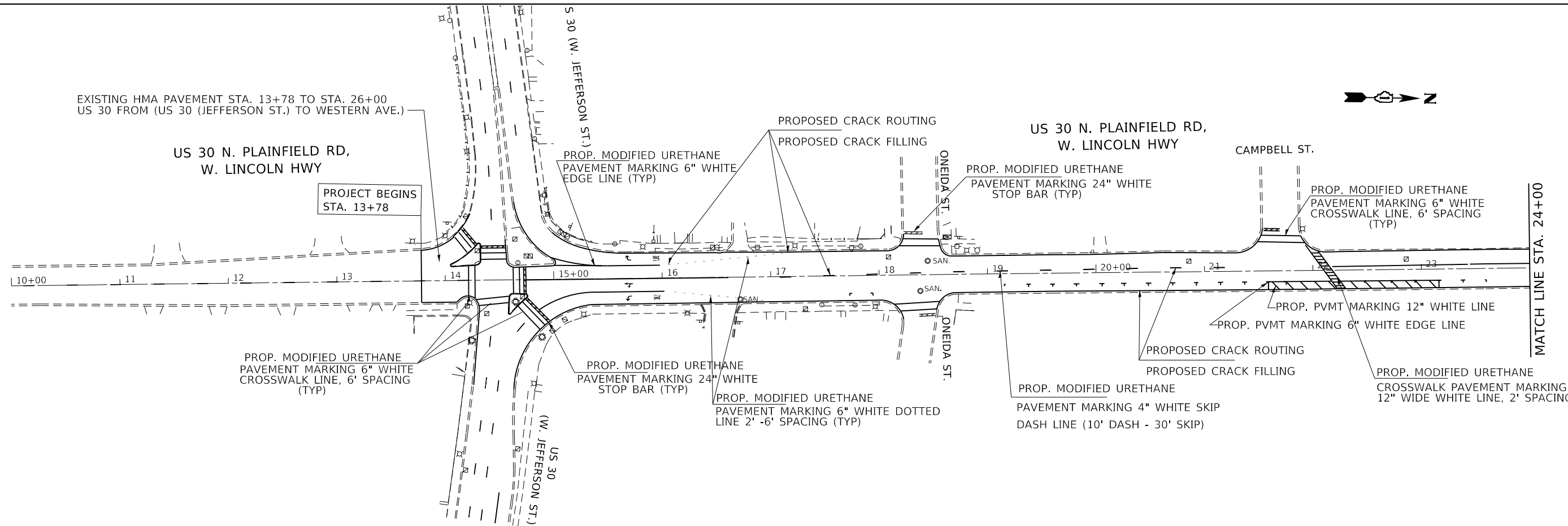
F.A.P. RTE.	SECTION	COUNTY	TOTAL SHEETS	SHEET NO.
575	2020-092-1	WILL	23	2
				CONTRACT NO. 62L70
		ILLINOIS	FED. AID PROJECT	

SUMMARY OF QUANTITIES				CONSTRUCTION TYPE CODE					SUMMARY OF QUANTITIES				CONSTRUCTION TYPE CODE				
CODE NO	ITEM	UNIT	TOTAL QUANTITIES URBAN	100% STATE 0005					CODE NO	ITEM	UNIT	TOTAL QUANTITIES URBAN	100% STATE 0005				
21101615	TOPSOIL FURNISH AND PLACE, 4"	SO YD	227	227					67000400	ENGINEER'S FIELD OFFICE, TYPE A	CAL MO	12	12				
25200100	SODDING	SO YD	227	227					67100100	MOBILIZATION	L SUM	1	1				
44200970	CLASS B PATCHES, TYPE II, 10 INCH	SO YD	243	243					70102620	TRAFFIC CONTROL AND PROTECTION, STANDARD 701501	L SUM	1	1				
44200974	CLASS B PATCHES, TYPE III, 10 INCH	SO YD	252	252					70102622	TRAFFIC CONTROL AND PROTECTION, STANDARD 701502	L SUM	1	1				
44200976	CLASS B PATCHES, TYPE IV, 10 INCH	SO YD	373	373					70102625	TRAFFIC CONTROL AND PROTECTION, STANDARD 701606	L SUM	1	1				
44201299	DOWEL BARS 1 1/2"	EACH	1360	1360					70102630	TRAFFIC CONTROL AND PROTECTION, STANDARD 701601	L SUM	1	1				
44201765	CLASS D PATCHES, TYPE II, 10 INCH	SO YD	30	30					70102635	TRAFFIC CONTROL AND PROTECTION, STANDARD 701701	L SUM	1	1				
44201769	CLASS D PATCHES, TYPE III, 10 INCH	SO YD	30	30					70102640	TRAFFIC CONTROL AND PROTECTION, STANDARD 701801	L SUM	1	1				
44201771	CLASS D PATCHES, TYPE IV, 10 INCH	SO YD	47	47					* 78009000	MODIFIED URETHANE PAVEMENT MARKING - LETTERS AND SYMBOLS	SO FT	496	496				
44213200	SAW CUTS	FOOT	5388	5388					* 78009004	MODIFIED URETHANE PAVEMENT MARKING - LINE 4"	FOOT	26400	26400				
45100100	CRACK ROUTING (PAVEMENT)	FOOT	6100	6100						* SPECIALTY ITEMS							
45100200	CRACK FILLING	POUND	1717	1717													
45200100	JOINT OR CRACK ROUTING (PC CONCRETE PAVEMENT AND SHOULDER)	FOOT	15330	15330													
45200300	JOINT OR CRACK FILLING	POUND	26278	26278													

REV-SEP







MODEL: Default  
 FILE: \\sdrpc-prod\pub\baronm.dwg  
 PROJECT: \\sdrpc-prod\pub\baronm.dwg  
 OFFICE: \\sdrpc-prod\pub\baronm.dwg  
 DATE: 8/14/2020

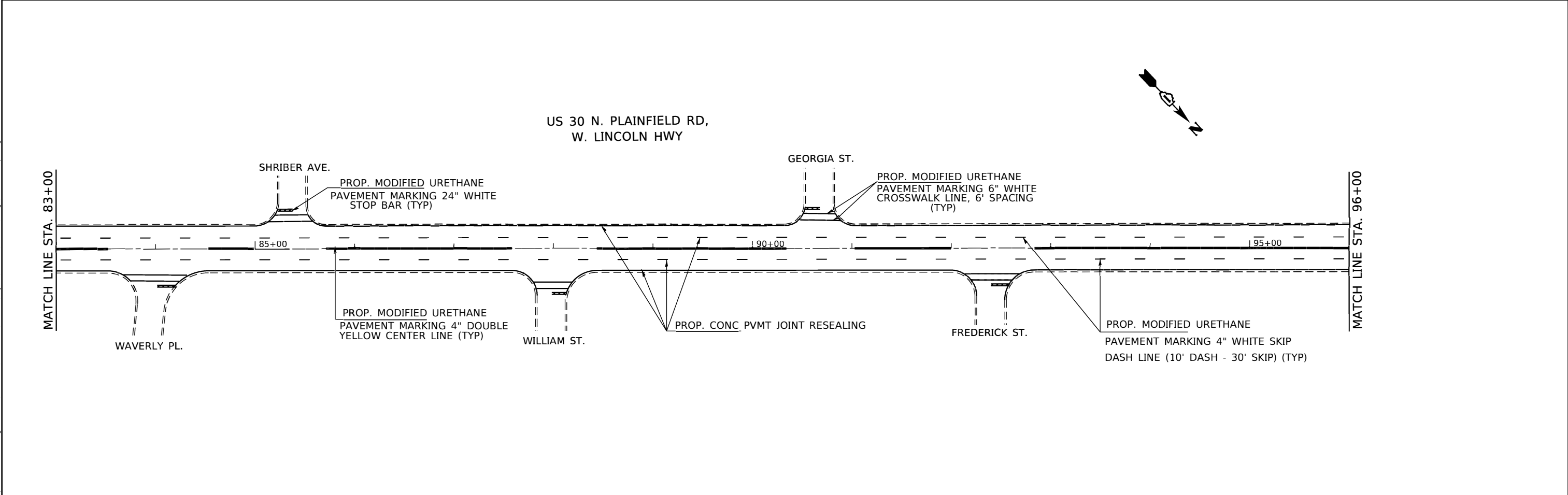
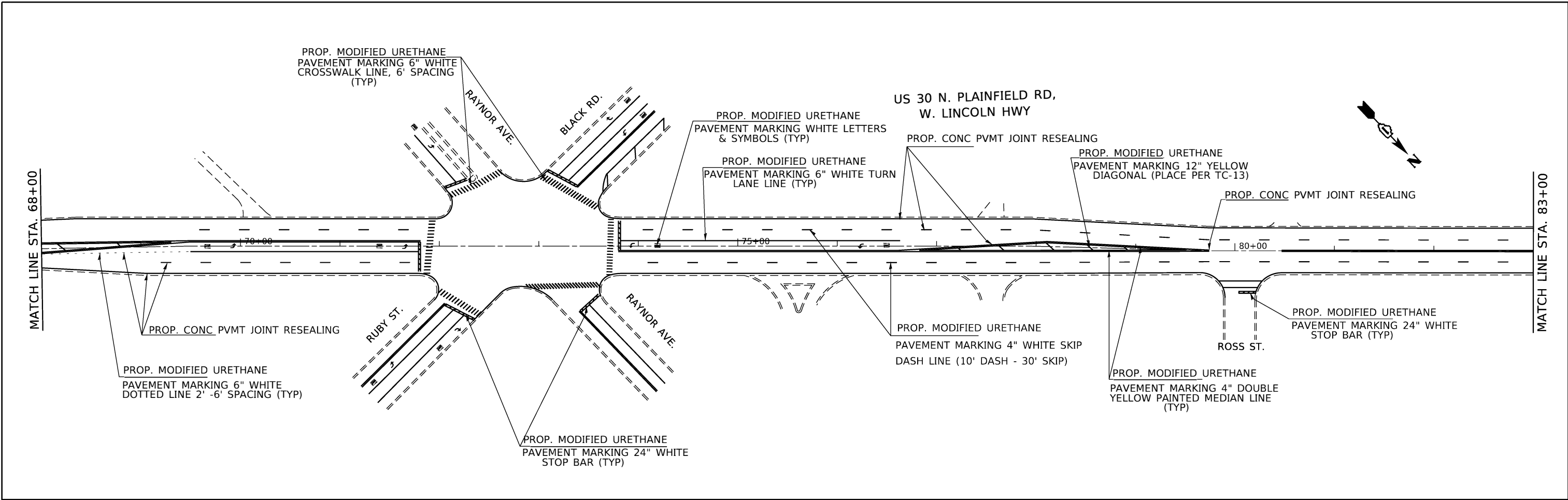
USER NAME = Valladoliv	DESIGNED -	REVISED -
	DRAWN -	REVISED -
PLOT SCALE = 100,0000' / in.	CHECKED -	REVISED -
PLOT DATE = 8/14/2020	DATE -	REVISED -

**STATE OF ILLINOIS**  
**DEPARTMENT OF TRANSPORTATION**

<b>ROADWAY PLAN</b> <b>U.S. RTE. 30 (LARKIN AVE. - TO U.S. 30 (STATE ST. SB))</b>	
SCALE: 1"=50'	SHEET OF SHEETS STA. TO STA.

F.A.P. RTE.	SECTION	COUNTY	TOTAL SHEETS	SHEET NO.
575	2020-092-1	WILL	23	5
CONTRACT NO. 62L70				
ILLINOIS FED. AID PROJECT				





MODEL: Default  
 FILE: Main: P:\Highwayroom.dat\Illinois.gov\PWIDOT\Documents\DOT\_Offices\District\_1\Projects\149120\CADD\Drawings\Design\149120-shl-plan.dgn

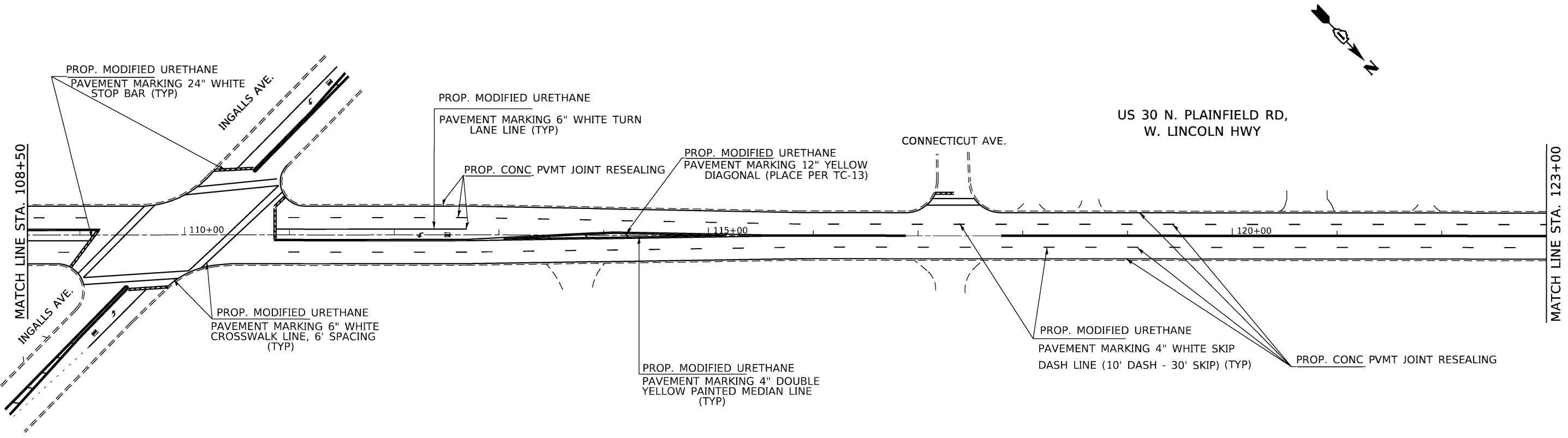
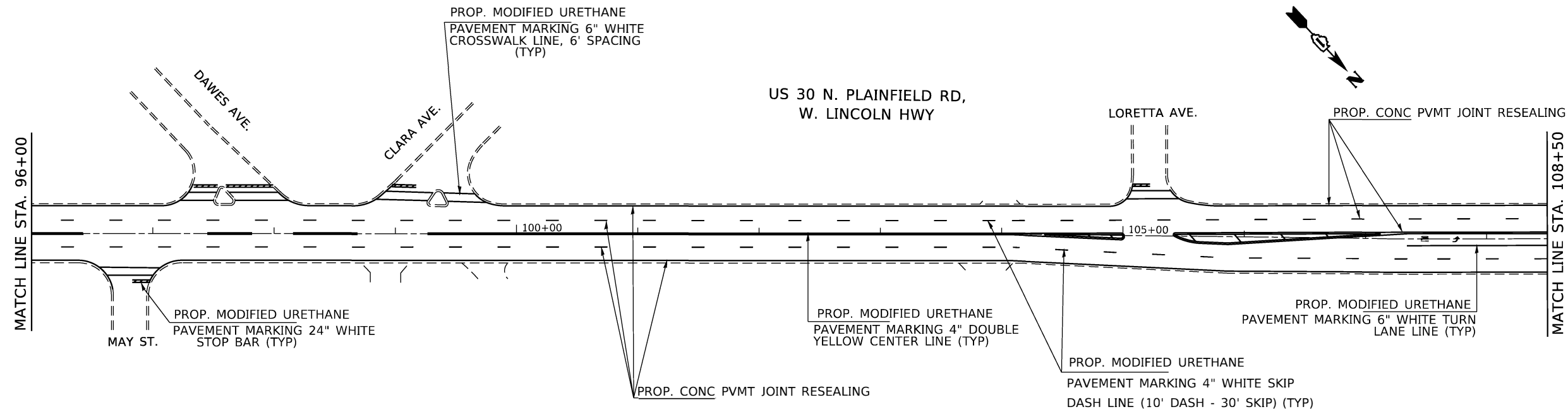
USER NAME = valladoliv	DESIGNED -	REVISED -
	DRAWN -	REVISED -
PLOT SCALE = 100.0000' / in.	CHECKED -	REVISED -
PLOT DATE = 6/25/2020	DATE -	REVISED -

**STATE OF ILLINOIS**  
**DEPARTMENT OF TRANSPORTATION**

**ROADWAY PLAN**  
**U.S. RTE. 30 (LARKIN AVE. - TO U.S. 30 (STATE ST. SB))**

SCALE: 1"=50'    SHEET    OF    SHEETS    STA.    TO    STA.

F.A.P. RTE.	SECTION	COUNTY	TOTAL SHEETS	SHEET NO.
575	2020-092-1	WILL	23	7
CONTRACT NO. 62L70				
ILLINOIS FED. AID PROJECT				



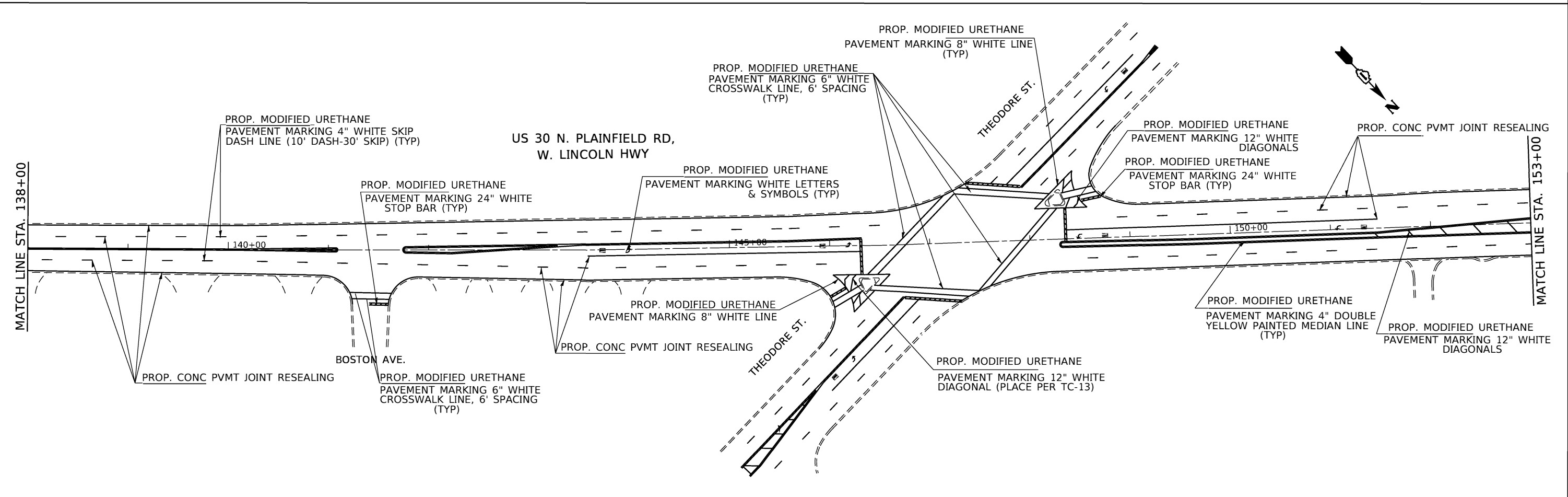
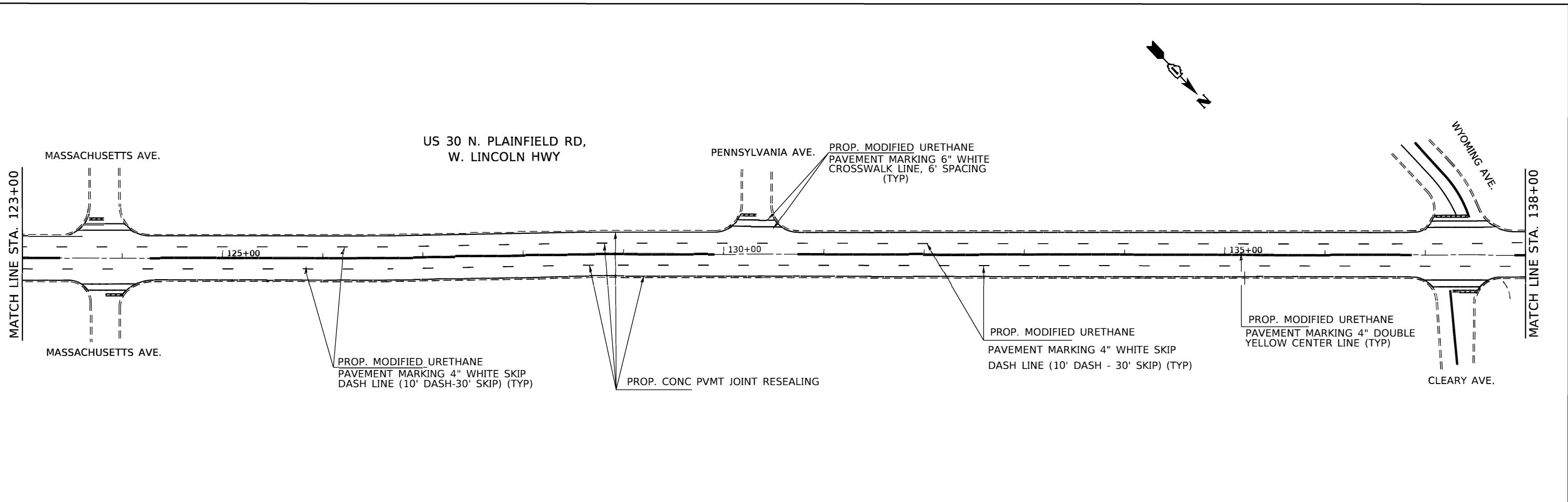
MODEL: Defaul  
 FILE NAME: p:\uplanroom.dat\illinois.gov\PHUDOT\Documents\DOT\_Offices\District\_1\Project\119120\CADData\Design\119120-sh1.dwg

USER NAME = aadolliv	DESIGNED -	REVISED -
PLOT SCALE = 100.0000' / in.	DRAWN -	REVISED -
PLOT DATE = 6/23/2020	CHECKED -	REVISED -
	DATE -	REVISED -

**STATE OF ILLINOIS**  
**DEPARTMENT OF TRANSPORTATION**

<b>ROADWAY PLAN</b> <b>U.S. RTE. 30 (LARKIN AVE. - TO U.S. 30 (STATE ST. SB))</b>			
SCALE: 1"=50'	SHEET	OF SHEETS	STA. TO STA.

F.A.P. RTE. 575	SECTION 2020-092-1	COUNTY WILL	TOTAL SHEETS 23	SHEET NO. 8
ILLINOIS FED. AID PROJECT			CONTRACT NO. 62L70	



MODEL: C:\p1\work\119120\119120.dwg  
 FILE NAME: 119120\119120.dwg  
 PROJECT: 119120\119120.dwg  
 USER: valladoliv

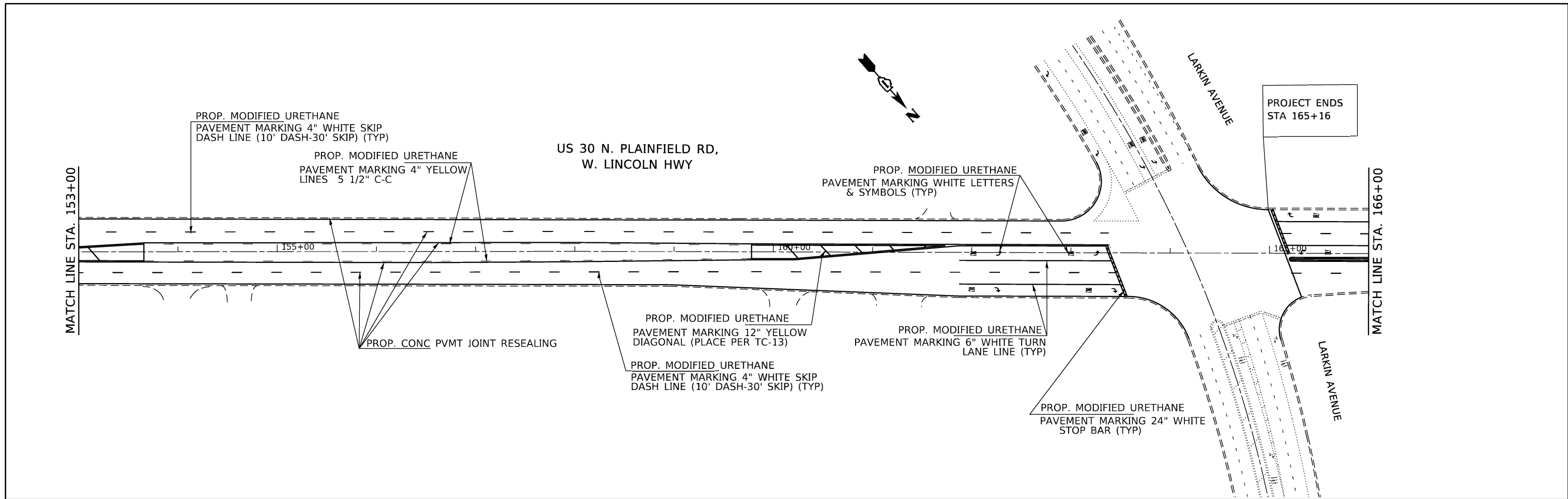
USER NAME = valladoliv	DESIGNED -	REVISED -
PLOT SCALE = 100.0000' / in.	DRAWN -	REVISED -
PLOT DATE = 6/25/2020	CHECKED -	REVISED -
	DATE -	REVISED -

**STATE OF ILLINOIS**  
**DEPARTMENT OF TRANSPORTATION**

**ROADWAY PLAN**  
**U.S. RTE. 30 (LARKIN AVE. - TO U.S. 30 (STATE ST. SB))**  
 SCALE: 1"=50'    SHEET    OF    SHEETS    STA.    TO    STA.

F.A.P. RTE.	SECTION	COUNTY	TOTAL SHEETS	SHEET NO.
575	2020-092-1	WILL	23	9
CONTRACT NO. 62L70				
ILLINOIS FED. AID PROJECT				

MODEL: Default  
 FILE NAME: P:\Highwayroom.dat\Illinois.gov\PWIDOT\Documents\DOT\_Offices\District\_1\Projects\149120\CADD\Drawings\149120-sh-plain.dgn



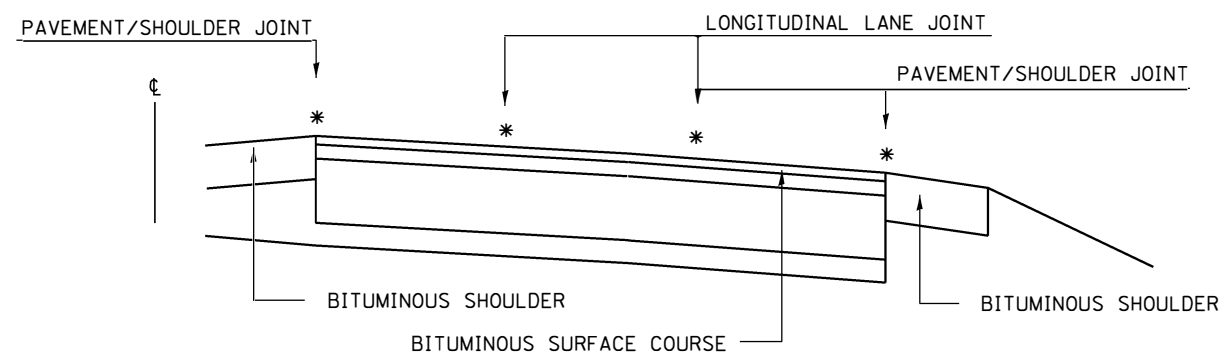
USER NAME = valladoliv	DESIGNED -	REVISED -
	DRAWN -	REVISED -
PLOT SCALE = 100.0000' / in.	CHECKED -	REVISED -
PLOT DATE = 6/25/2020	DATE -	REVISED -

**STATE OF ILLINOIS  
 DEPARTMENT OF TRANSPORTATION**

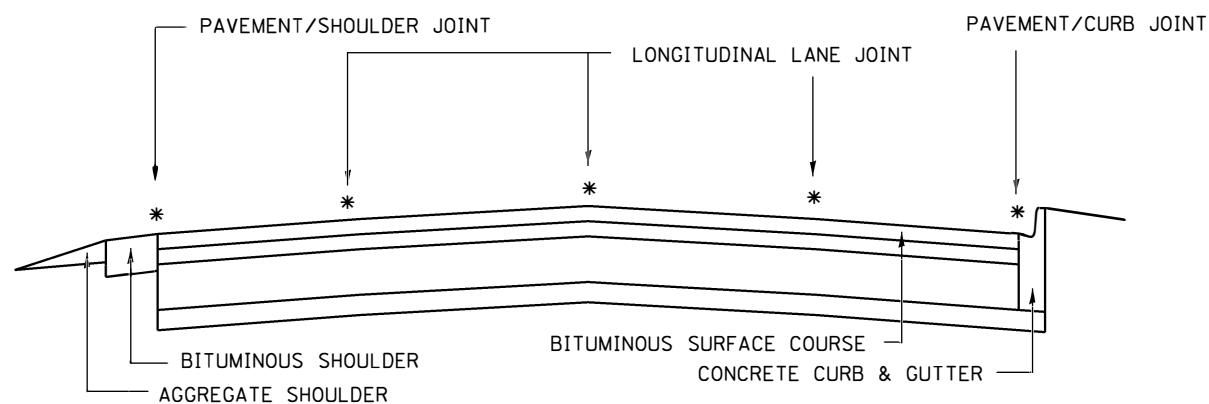
**ROADWAY PLAN  
 U.S. RTE. 30 (LARKIN AVE. - TO U.S. 30 (STATE ST. SB))**

SCALE: 1"=50' SHEET OF SHEETS STA. TO STA.

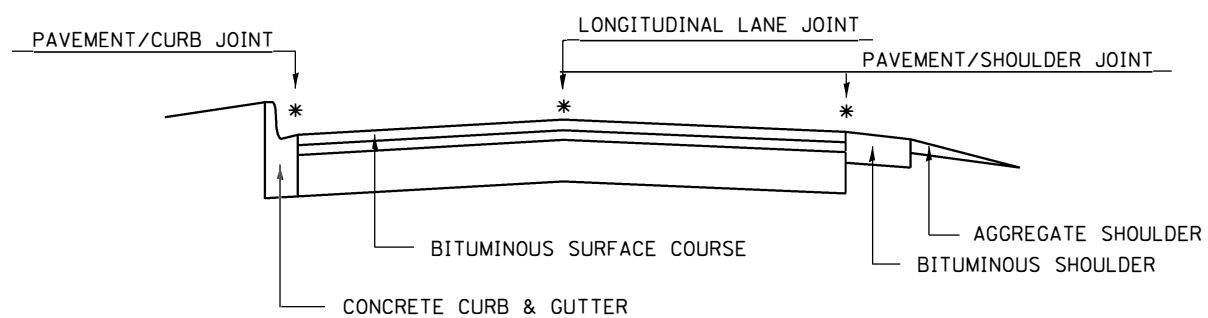
F.A.P. RTE.	SECTION	COUNTY	TOTAL SHEETS	SHEET NO.
575	2020-092-1	WILL	23	10
CONTRACT NO. 62L70				
ILLINOIS FED. AID PROJECT				



**MULTI-LANE DIVIDED PAVEMENT**



**MULTI-LANE UNDIVIDED PAVEMENT**

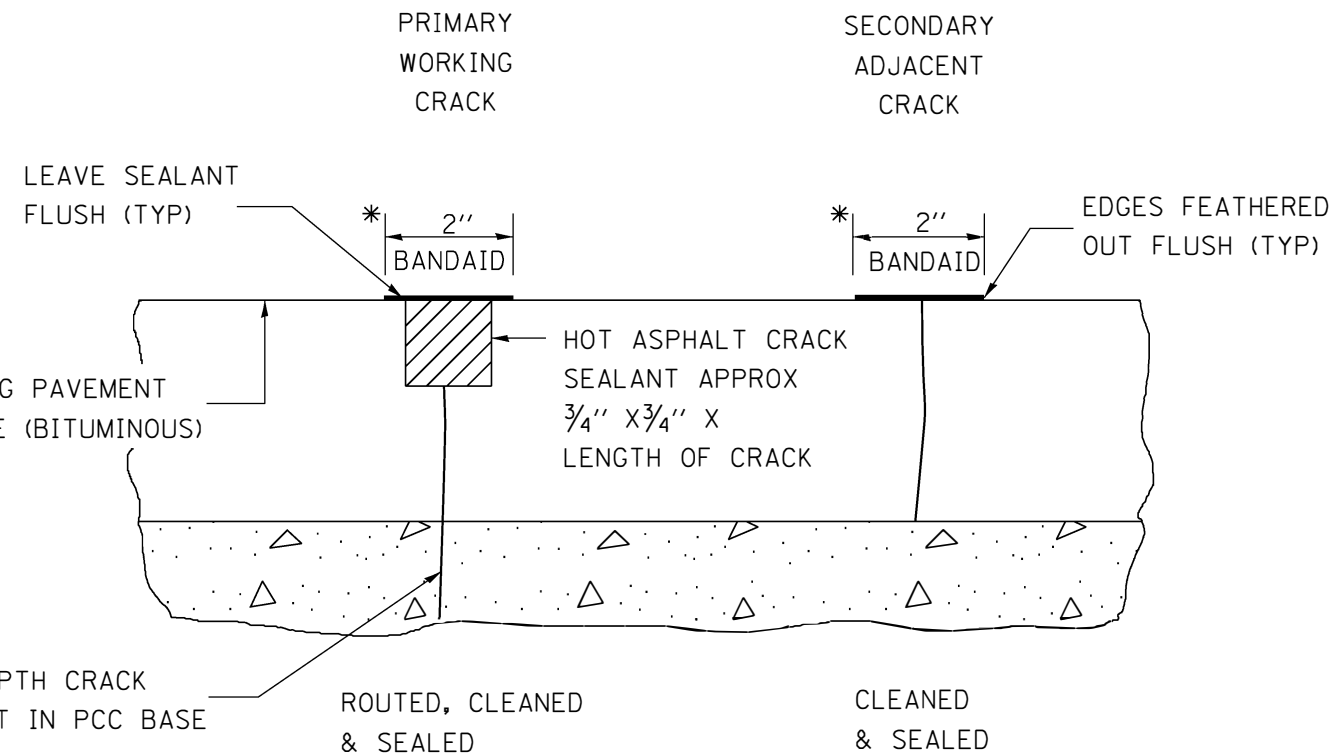


**TWO-LANE PAVEMENT**

PROPOSED TRANSVERSE CRACK ROUTING (PAVEMENT) & CRACK FILLING LOCATIONS NOT SHOWN

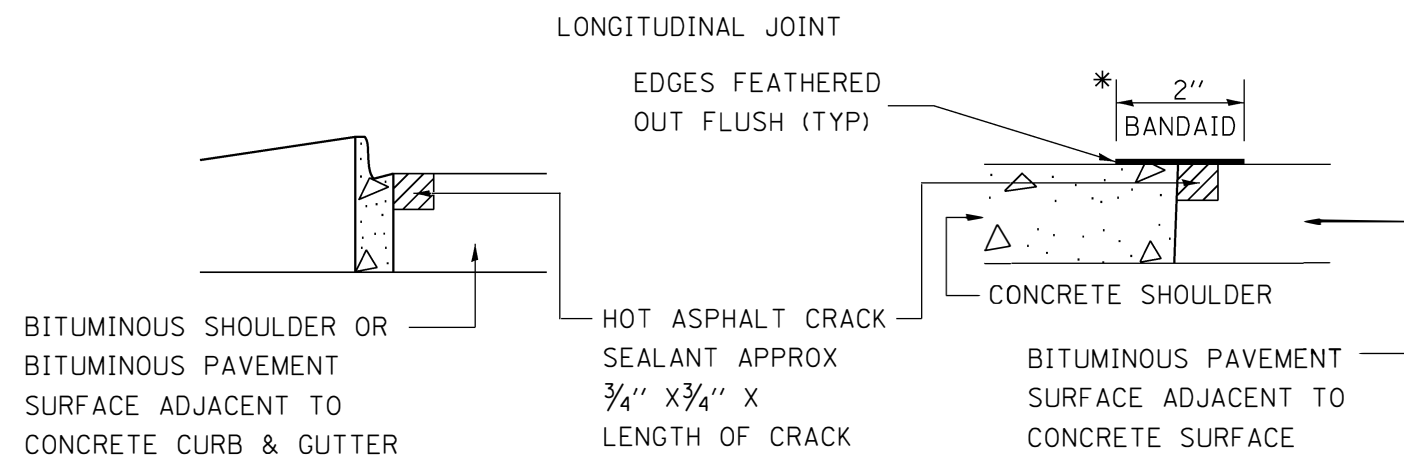
\* PROPOSED LONGITUDINAL CRACK ROUTING (PAVEMENT) & CRACK FILLING LOCATIONS

**GENERAL EXISTING TYPICAL SECTIONS**



\*

IN ALL LOCATIONS WHERE THE LONGITUDINAL CRACK CONFLICTS WITH EXISTING PAVEMENT MARKINGS (EITHER EDGE LINE OR LANE LINE) THE CRACK SHALL BE ROUTED & THE RESULTING RESERVOIR FILLED WITH SEALANT. ALL DAMAGES TO EXISTING RAISED REFLECTIVE PAVEMENT MARKERS SHALL BE REPLACED AT THE EXPENSE OF THE CONTRACTOR. ALL EXISTING PAVEMENT MARKINGS WITHIN THE PROJECT LIMITS SHALL BE RESTORED WITH HOT SPRAY THERMOPLASTIC PAVEMENT MARKINGS.



**CRACK & JOINT SEALING DETAIL**

FILE NAME = D149120-sht-details.dgn	USER NAME = valledolidv	DESIGNED -	REVISED -
		DRAWN -	REVISED -
	PLOT SCALE = 100.0000' / in.	CHECKED -	REVISED -
	PLOT DATE = 6/18/2020	DATE -	REVISED -

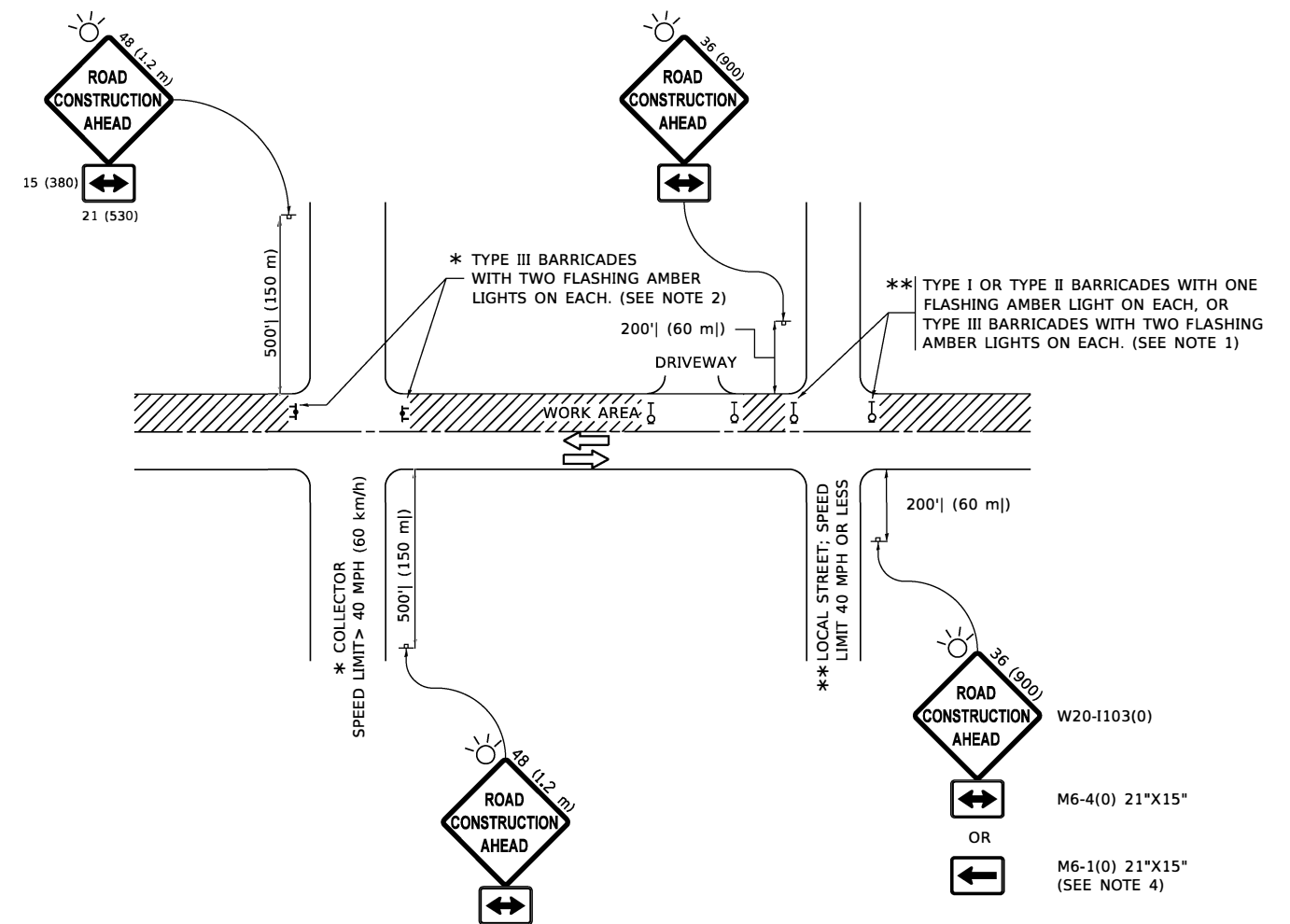
**STATE OF ILLINOIS  
DEPARTMENT OF TRANSPORTATION**

**US 30 /PLAINFIELD RD (LARKIN AVE. TO US 30 (CENTER ST. SB))  
CRACK & JOINT SEALING DETAIL**

SCALE: SHEET NO. OF SHEETS STA. TO STA.

F.A.P. RTE. 575	SECTION 2020-092-I	COUNTY WILL	TOTAL SHEETS 23	SHEET NO. 11
CONTRACT NO. 62L70				
ILLINOIS FED. AID PROJECT				





**NOTES:**

1. SIDE ROAD WITH A SPEED LIMIT OF 40 MPH (60 km/h) OR LESS AS SHOWN ON THE DRAWING AND AS DIRECTED BY THE ENGINEER:
  - a) ONE "ROAD CONSTRUCTION AHEAD" SIGN 36 x 36 (900x900) WITH A FLASHER MOUNTED ON IT APPROXIMATELY 200' (60 m) IN ADVANCE OF THE MAIN ROUTE.
  - b) THE CLOSED PORTION OF THE MAIN ROUTE SHALL BE PROTECTED BY BLOCKING WITH TYPE I, TYPE II OR TYPE III BARRICADES, 1/3 OF THE CROSS SECTION OF THE CLOSED PORTION.
2. SIDE ROAD WITH A SPEED LIMIT GREATER THAN 40 MPH (60 km/h) AS SHOWN ON THE DRAWING AND AS DIRECTED BY THE ENGINEER:
  - a) ONE "ROAD CONSTRUCTION AHEAD" SIGN 48 x 48 (1.2 m x 1.2 m) WITH A FLASHER MOUNTED ON IT APPROXIMATELY 500' (150 m) IN ADVANCE OF THE MAIN ROUTE.
  - b) BLOCKING WITH TYPE III BARRICADES, 1/2 OF THE CROSS SECTION OF THE CLOSED PORTION.
3. CONES MAY BE SUBSTITUTED FOR BARRICADES OR DRUMS AT HALF THE SPACING DURING DAY OPERATIONS. CONES SHALL BE A MINIMUM OF 28 (710) IN HEIGHT.
4. SIGNING AND THE WORK ZONE, A SINGLE HEADED ARROW (M6-1) SHALL BE USED IN LIEU OF THE DOUBLE HEADED ARROW (M6-4).
5. WHEN WORK IS BEING PERFORMED ON A SIDE ROAD OR DRIVEWAY, FOLLOW THE APPLICABLE STANDARD(S). THE DIRECTIONAL ARROW (M6-1 OR M6-4) SHALL BE COVERED OR REMOVED WHEN NO LONGER CONSISTENT WITH THE TRAFFIC CONTROL SET-UP.
6. ADVANCE WARNING SIGNS ARE TO BE OMITTED ON DRIVEWAYS UNLESS OTHERWISE SPECIFIED IN THE PLANS OR BY THE ENGINEER.
7. THE TRAFFIC CONTROL AND PROTECTION FOR SIDE ROADS, INTERSECTIONS, AND DRIVEWAYS SHALL BE INCLUDED IN THE COST OF SPECIFIED TRAFFIC CONTROL STANDARDS OR ITEMS.

All dimensions are in inches (millimeters) unless otherwise shown.

MODEL: Default  
 FILE NAME: p:\highwayroom.dat\illinois.gov\PIWDOT\Documents\DOT\_Offices\District\_1\Projects\149120\CADD\data\Design\DS5.dgn

USER NAME = valladoliv	DESIGNED - L.H.A.	REVISED - A. HOUSEH 10-15-96
PLOT SCALE = 100.0000' / in.	DRAWN -	REVISED - T. RAMMACHER 01-06-00
PLOT DATE = 6/18/2020	CHECKED -	REVISED - A. SCHUETZE 07-01-13
	DATE - 06-89	REVISED - A. SCHUETZE 09-15-16

**STATE OF ILLINOIS  
DEPARTMENT OF TRANSPORTATION**

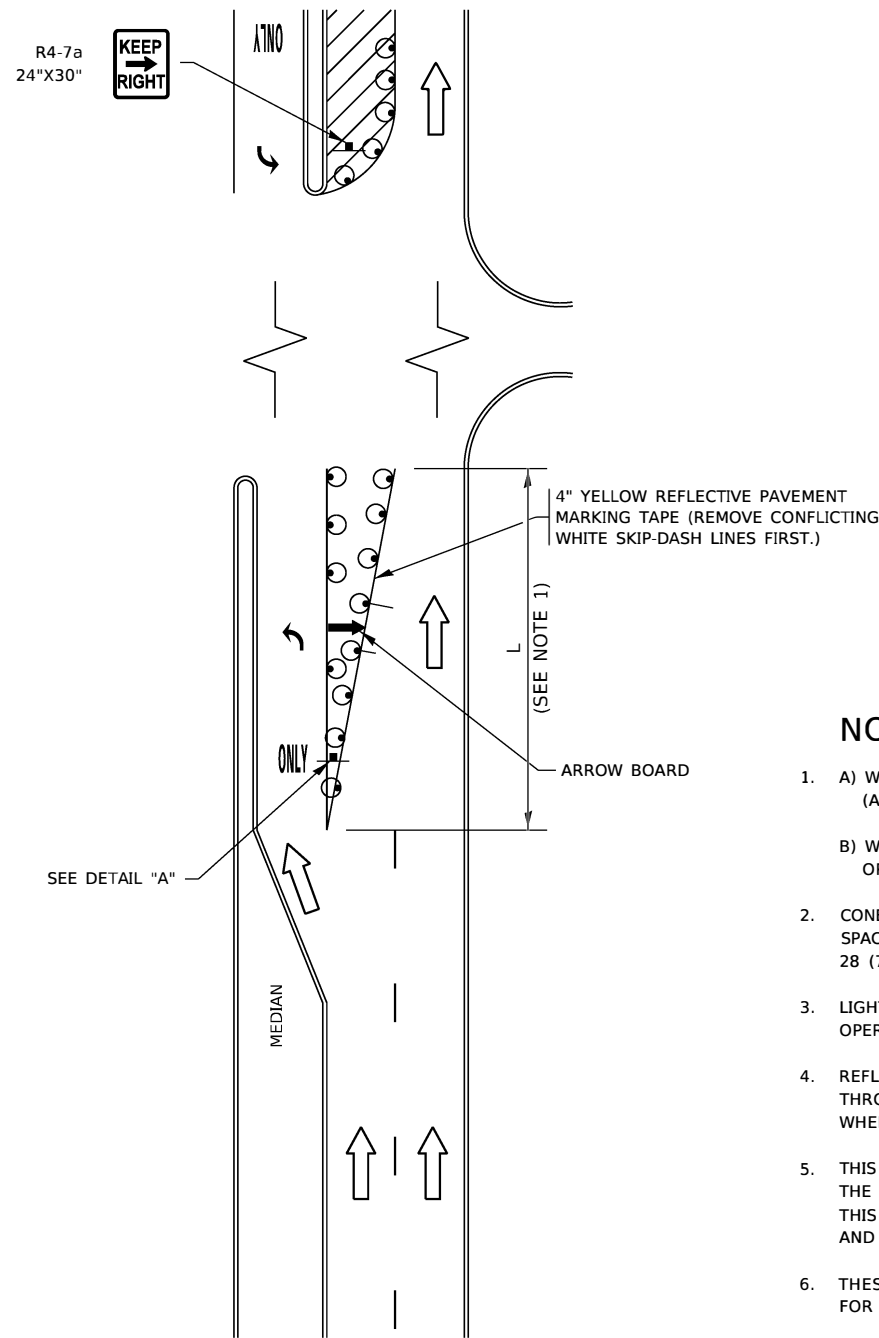
**TRAFFIC CONTROL AND PROTECTION FOR  
SIDE ROADS, INTERSECTIONS, AND DRIVEWAYS**

SCALE: NONE SHEET 1 OF 1 SHEETS STA. TO STA.

F.A.P. RTE.	SECTION	COUNTY	TOTAL SHEETS	SHEET NO.
575	2020-092-1	WILL	23	12
TC-10			CONTRACT NO. 62L70	
ILLINOIS FED. AID PROJECT				

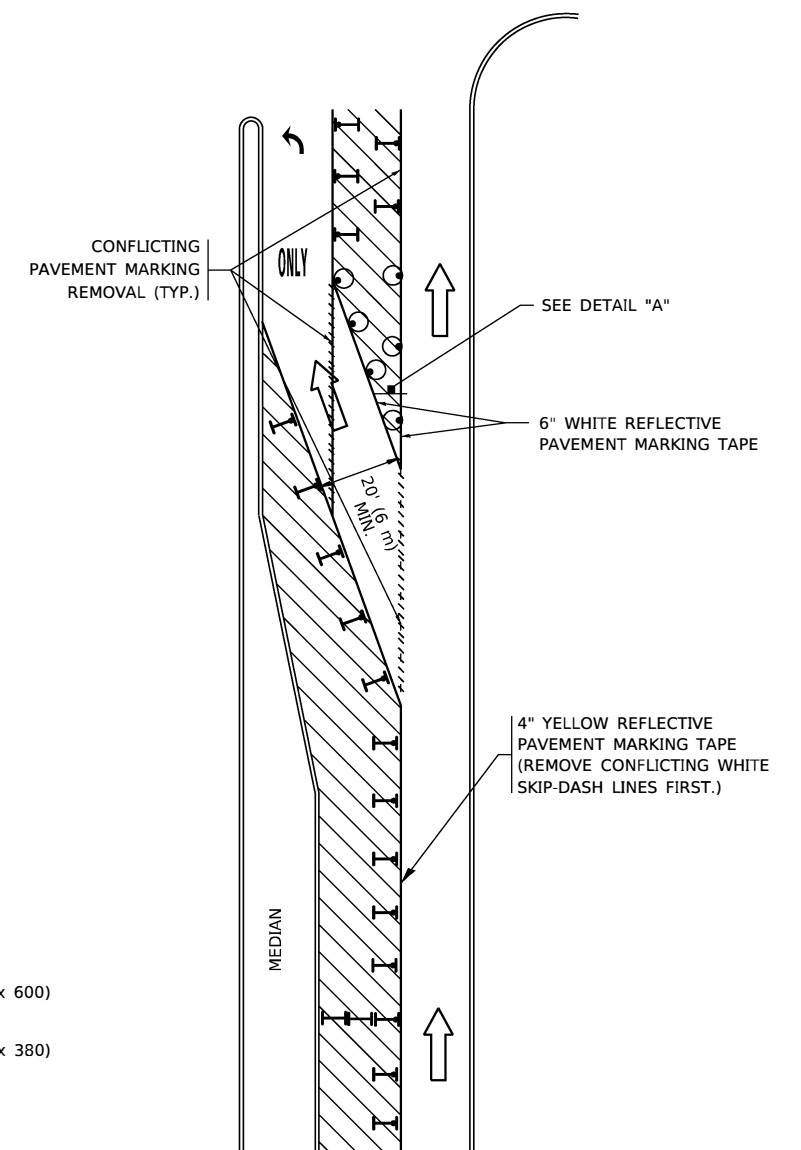


# TURN BAY ENTRANCE AT START OF LANE CLOSURE TAPER



**FIGURE 1**

# TURN BAY ENTRANCE WITHIN A LANE CLOSURE



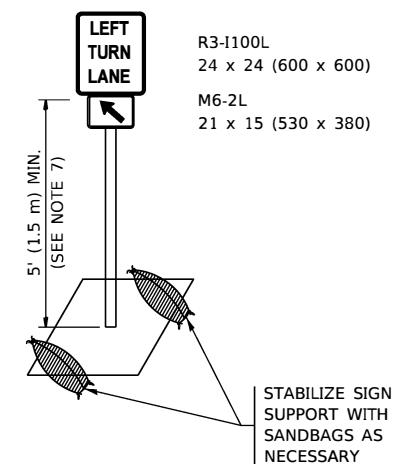
**FIGURE 2**

### LEGEND

- WORK AREA
- LANE OPEN TO TRAFFIC
- ARROW BOARD
- TYPE I OR II BARRICADE OR DRUM WITH STEADY BURN LIGHT
- DRUM WITH STEADY BURN LIGHT
- SIGN ASSEMBLY
- TYPE I OR II CHECK BARRICADE WITH FLASHING LIGHT

### NOTES:

1. A) WHEN "L" IS  $\leq$  THE STORAGE LENGTH OF THE TURN LANE (AS SHOWN IN FIG. 1), USE FIGURE 1.  
B) WHEN "L" IS  $>$  THE STORAGE LENGTH OF THE TURN LANE OR THE TURN LANE IS WITHIN THE LANE CLOSURE, USE FIGURE 2.
2. CONES MAY BE SUBSTITUTED FOR BARRICADES OR DRUMS AT HALF THE SPACING DURING DAY OPERATIONS. CONES SHALL BE A MINIMUM OF 28 (710) IN HEIGHT.
3. LIGHTS WILL NOT BE REQUIRED ON BARRICADES OR DRUMS FOR DAY OPERATIONS. ALL LIGHTS SHALL BE MONODIRECTIONAL.
4. REFLECTIVE TEMPORARY PAVEMENT MARKINGS SHALL BE PLACED THROUGHOUT THE BARRICADED AREAS OF EACH TURN BAY AS SHOWN WHERE THE CLOSURE TIME IS GREATER THAN FOURTEEN (14) DAYS.
5. THIS APPLICATION ALSO APPLIES WHEN WORK IS BEING PERFORMED IN THE RIGHT LANE(S) AND THE RIGHT TURN BAY IS TO REMAIN OPEN. UNDER THIS CONDITION, "RIGHT TURN LANE" R3-1100R 24 x 24 (600 x 600) AND M6-2R 21 x 15 (530 x 380) SHALL BE USED.
6. THESE CONTROLS SHALL SUPPLEMENT MAINLINE TRAFFIC CONTROL FOR LANE CLOSURES.
7. THE SIGNS SHALL BE MOUNTED ABOVE THE BARRICADES/DRUMS ON SEPARATE SIGN SUPPORTS THAT MEET NCHRP 350 OR MASH REQUIREMENTS.
8. TRAFFIC CONTROL AND PROTECTION AT TURN BAYS (TO REMAIN OPEN TO TRAFFIC) SHALL BE INCLUDED IN THE COST OF SPECIFIED TRAFFIC CONTROL STANDARDS OR ITEMS.



**DETAIL A**

All dimensions are in inches (millimeters) unless otherwise shown.

MODEL: Default  
FILE: Main: P:\p\planroom.dat\illinois.gov\PWIDOT\Documents\DOT\_Offices\District\_1\Projects\149120\CADD\Drawings\Design\Dist5\Fig.dgn

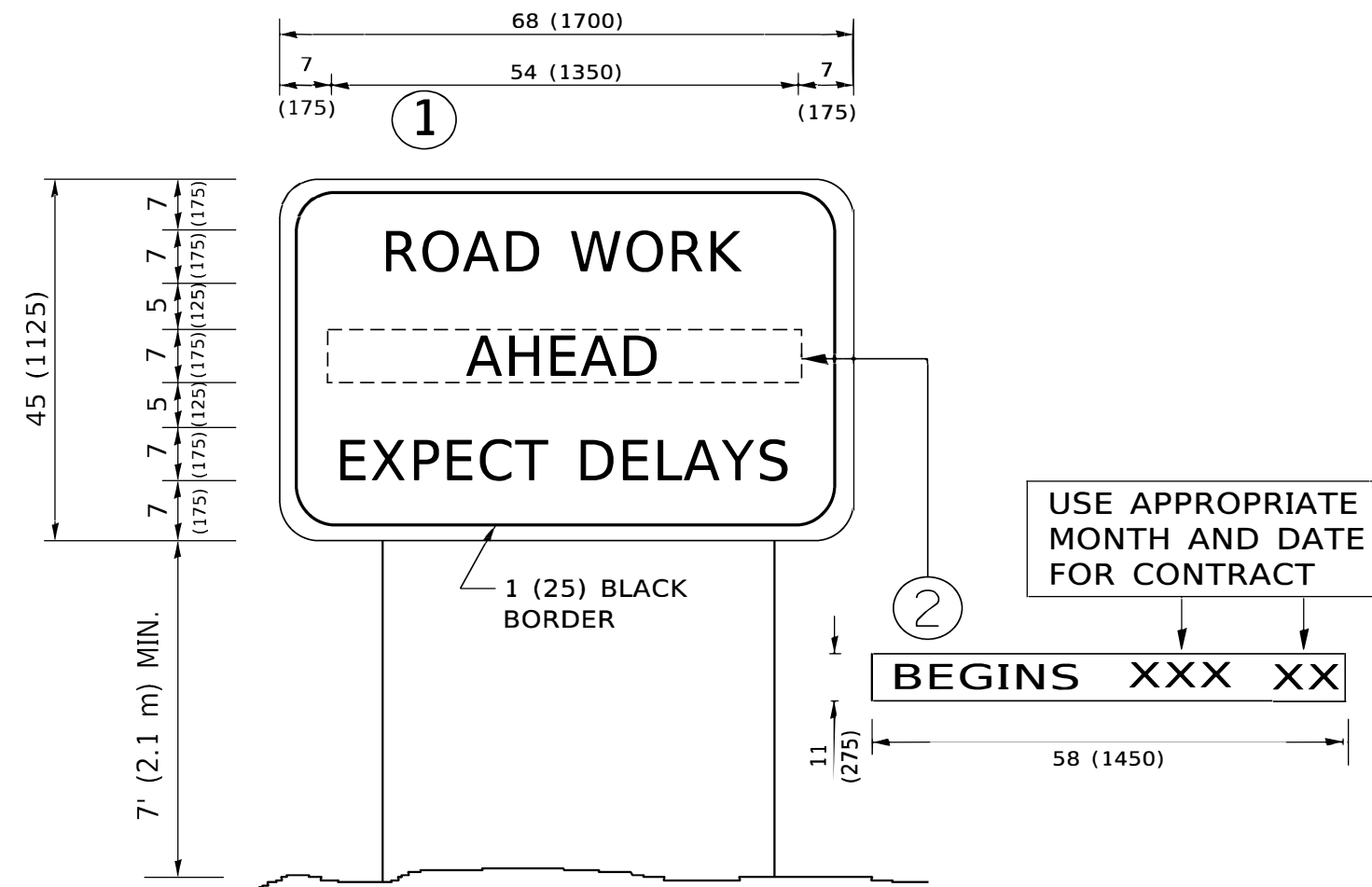
USER NAME = valladolid	DESIGNED - T. RAMMACHER 09-08-94	REVISED - R. BORO 09-14-09
	DRAWN - A. HOUSEH 11-07-95	REVISED - A. SCHUETZE 07-01-13
PLOT SCALE = 100.0000' / in.	CHECKED - A. HOUSEH 10-12-96	REVISED - A. SCHUETZE 09-15-16
PLOT DATE = 6/18/2020	DATE - T. RAMMACHER 01-06-00	REVISED -

**STATE OF ILLINOIS  
DEPARTMENT OF TRANSPORTATION**

**TRAFFIC CONTROL AND PROTECTION AT TURN BAYS  
(TO REMAIN OPEN TO TRAFFIC)**

SCALE: NONE SHEET 1 OF 1 SHEETS STA. TO STA.

F.A.P. RTE. 575	SECTION 2020-092-I	COUNTY WILL	TOTAL SHEETS 23	SHEET NO. 14
TC-14		CONTRACT NO. 62L70		
ILLINOIS FED. AID PROJECT				



**NOTES:**

1. USE BLACK LETTERING ON ORANGE BACKGROUND.
2. ERECT SIGNS IN ADVANCE OF THE LOCATION FOR THE "ROAD CONSTRUCTION AHEAD" SIGN AT LOCATIONS AS DIRECTED BY THE ENGINEER.
3. ERECT SIGN ① WITH INSTALLED PANEL ② ONE WEEK PRIOR TO THE START OF CONSTRUCTION.
4. REMOVE PANEL ② SOON AFTER THE START OF CONSTRUCTION.
5. SEE SPECIAL PROVISION FOR "TEMPORARY INFORMATION SIGNING" FOR ADDITIONAL INFORMATION.
6. ONE SIGN ASSEMBLY EQUALS 25.70 SQ. FT. (2.3 SQ. M.)
7. SHALL BE PAID FOR AS TEMPORARY INFORMATION SIGNING.

ALL DIMENSIONS ARE IN INCHES (MILLIMETERS) UNLESS OTHERWISE SHOWN.

MODEL: Default  
 FILE NAME: P:\uplanroom.dat\illinois.gov\PWIDOT\Documents\DOT\_Offices\District\_1\Project\ID149120\CADD\Design\DS5.dgn

USER NAME = valladoliv	DESIGNED -	REVISED - R. MIRS 09-15-97
	DRAWN -	REVISED - R. MIRS 12-11-97
PLOT SCALE = 100.0000' / in.	CHECKED -	REVISED - T. RAMMACHER 02-02-99
PLOT DATE = 6/18/2020	DATE -	REVISED - C. JUCIUS 01-31-07

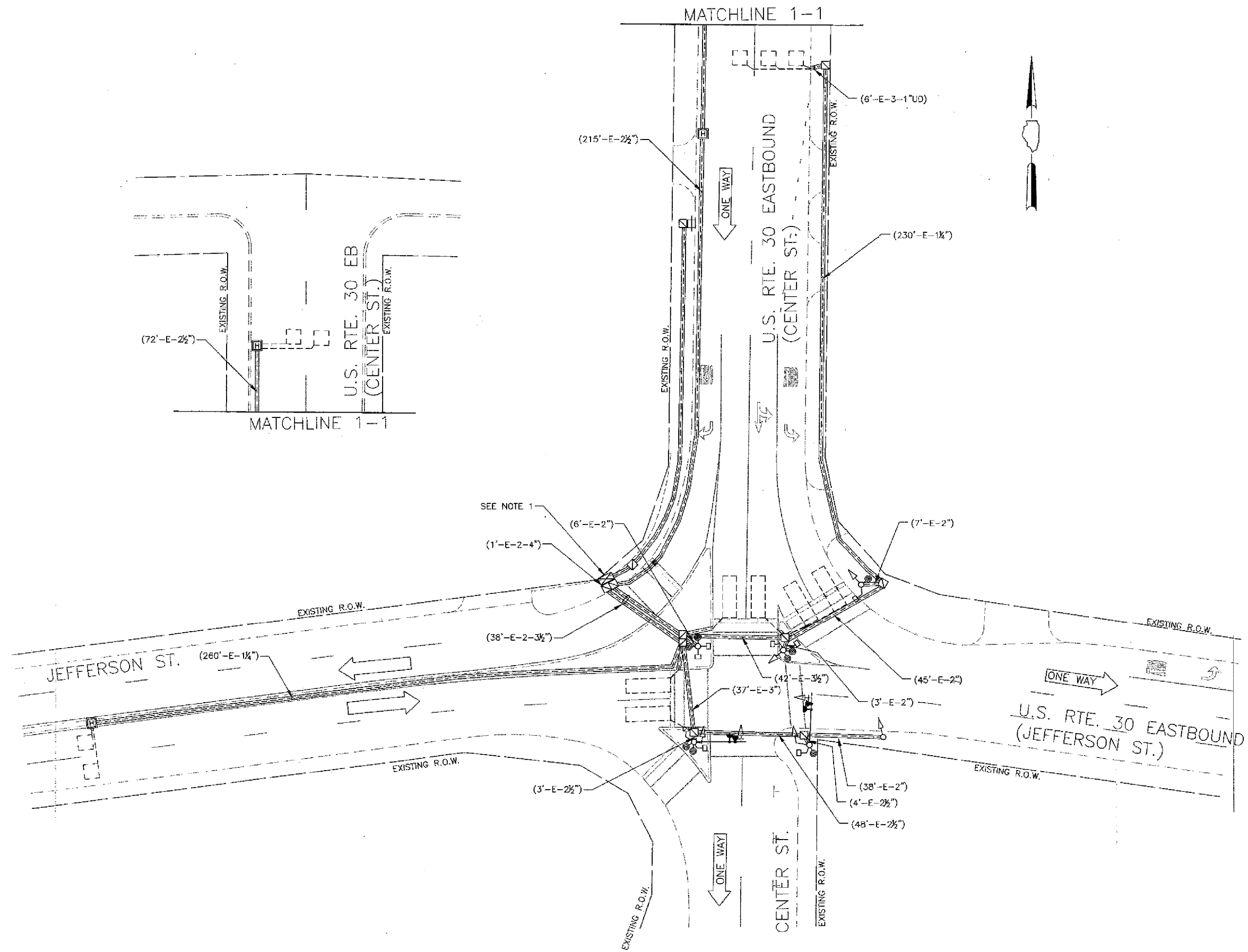
**STATE OF ILLINOIS  
DEPARTMENT OF TRANSPORTATION**

**ARTERIAL ROAD  
INFORMATION SIGN**

SCALE: NONE SHEET 1 OF 1 SHEETS STA. TO STA.

F.A.P. RTE.	SECTION	COUNTY	TOTAL SHEETS	SHEET NO.
575	2020-092-I	WILL	23	15
TC-22		CONTRACT NO. 62L70		
ILLINOIS FED. AID PROJECT				

MODEL: Default  
 FILE NAME: S:\WP\Bans\62L70\CAD\DD\15 22526 - US 30 Jefferson @ US 30 Center St.dgn



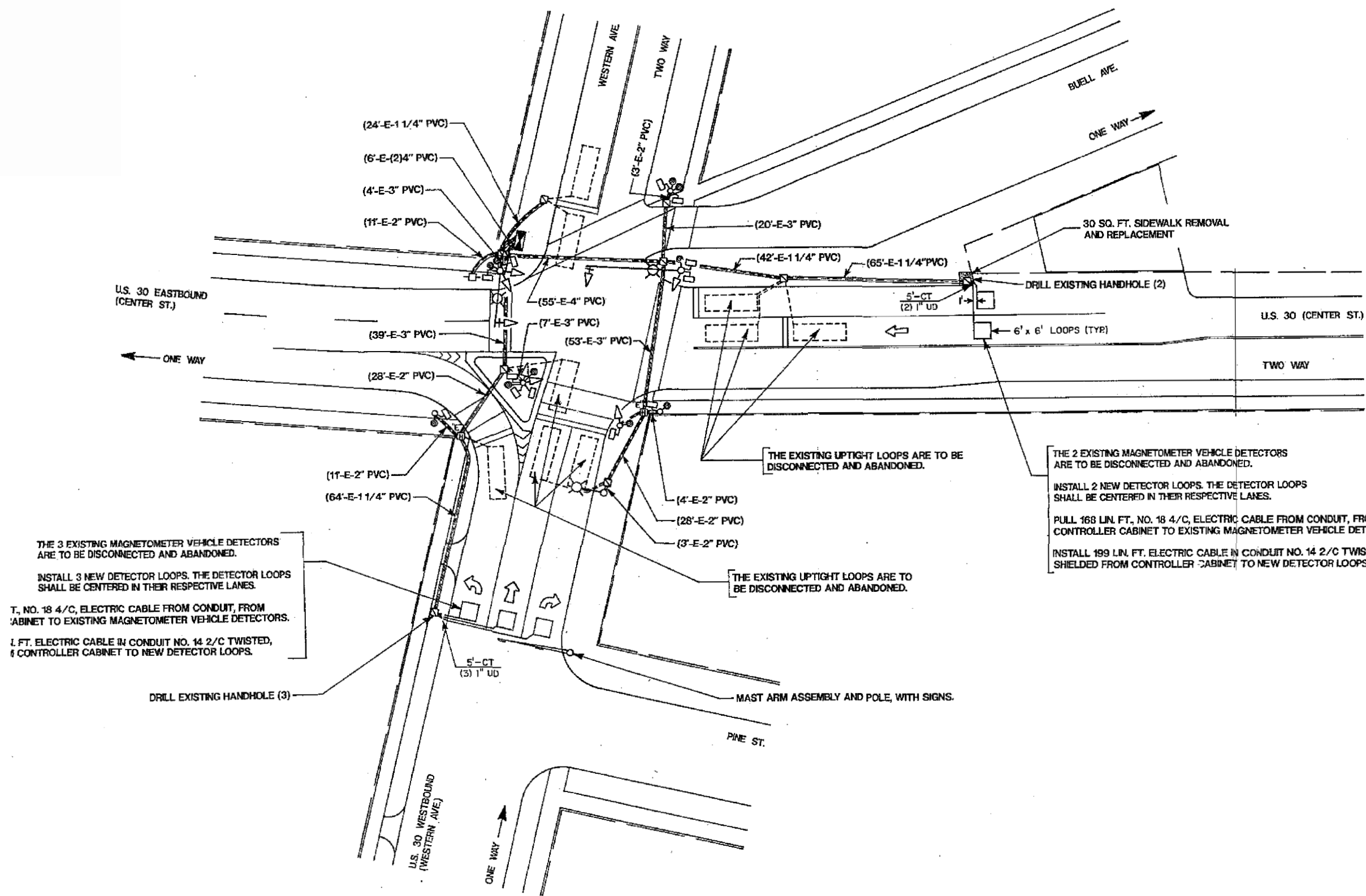
USER NAME = jiangc	DESIGNED - CJ	REVISED -
	DRAWN - CJ	REVISED -
PLOT SCALE = 40,0000 ' / in.	CHECKED - LP	REVISED -
PLOT DATE = 6/8/2020	DATE - 06/09/2020	REVISED -

**STATE OF ILLINOIS  
 DEPARTMENT OF TRANSPORTATION**

**DETECTOR LOOP REPLACEMENT PLAN  
 US RTE. 30 (JEFFERSON ST.) AT US RTE. 30 (CENTER ST.)**

SCALE: 1"=20' SHEET OF SHEETS STA. TO STA.

F.A.P. Rte.	SECTION	COUNTY	TOTAL SHEETS	SHEET NO.
575	2020-092-1	WILL	23	16
CONTRACT NO. 62L70			ILLINOIS FED. AID PROJECT	



THE 3 EXISTING MAGNETOMETER VEHICLE DETECTORS ARE TO BE DISCONNECTED AND ABANDONED.  
 INSTALL 3 NEW DETECTOR LOOPS. THE DETECTOR LOOPS SHALL BE CENTERED IN THEIR RESPECTIVE LANES.  
 T, NO. 18 4/C, ELECTRIC CABLE FROM CONDUIT, FROM CABINET TO EXISTING MAGNETOMETER VEHICLE DETECTORS.  
 1 FT. ELECTRIC CABLE IN CONDUIT NO. 14 2/C TWISTED, SHIELDED FROM CONTROLLER CABINET TO NEW DETECTOR LOOPS.

THE EXISTING UPTIGHT LOOPS ARE TO BE DISCONNECTED AND ABANDONED.

THE EXISTING UPTIGHT LOOPS ARE TO BE DISCONNECTED AND ABANDONED.

THE 2 EXISTING MAGNETOMETER VEHICLE DETECTORS ARE TO BE DISCONNECTED AND ABANDONED.  
 INSTALL 2 NEW DETECTOR LOOPS. THE DETECTOR LOOPS SHALL BE CENTERED IN THEIR RESPECTIVE LANES.  
 PULL 168 LIN. FT., NO. 18 4/C, ELECTRIC CABLE FROM CONDUIT, FROM CONTROLLER CABINET TO EXISTING MAGNETOMETER VEHICLE DETECTORS.  
 INSTALL 199 LIN. FT. ELECTRIC CABLE IN CONDUIT NO. 14 2/C TWISTED, SHIELDED FROM CONTROLLER CABINET TO NEW DETECTOR LOOPS.

MODEL: Default  
 FILE NAME: S:\P\16162\70\CADD\US 30 center at Western.dgn

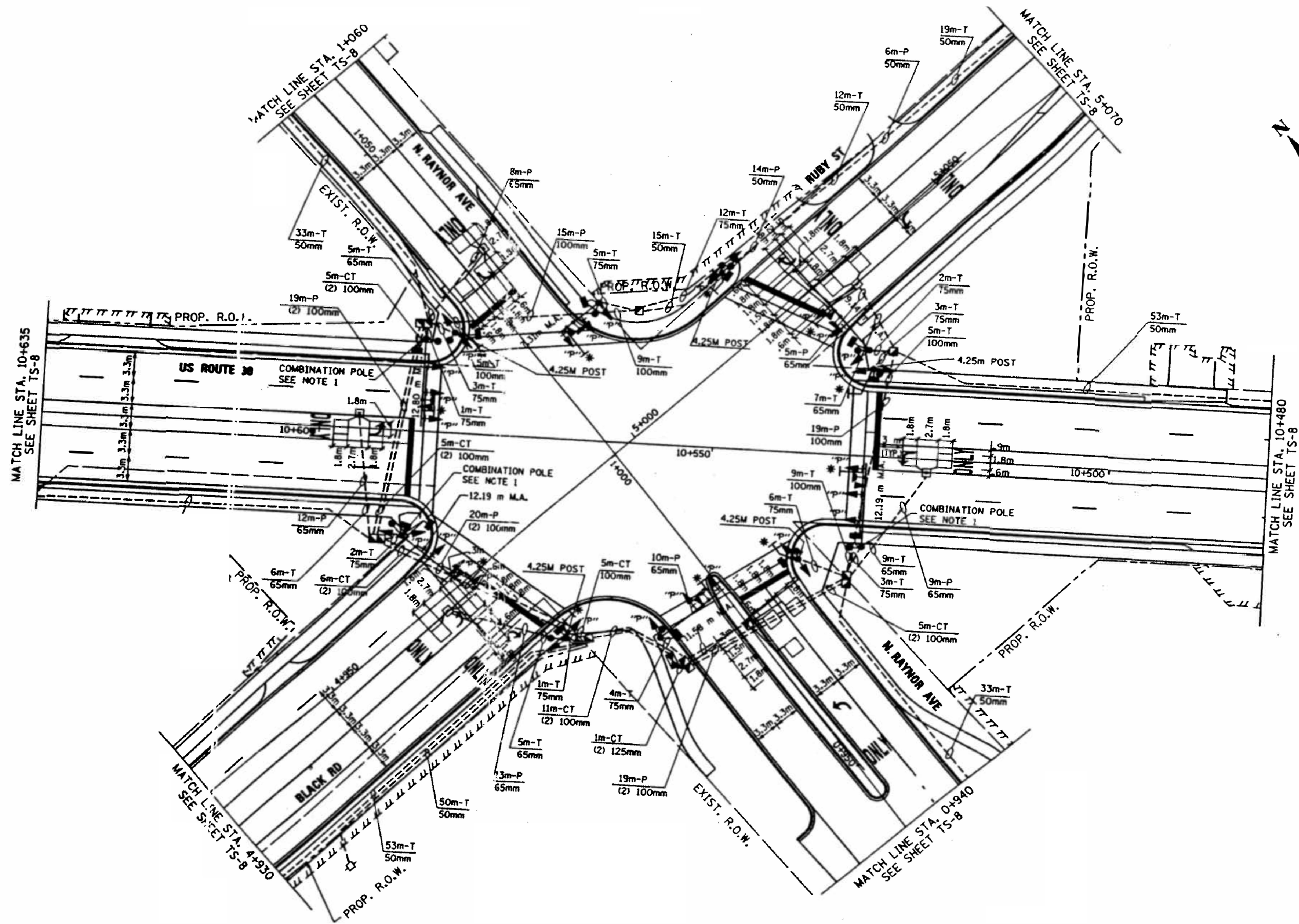
USER NAME = jiangc	DESIGNED - CJ	REVISED -
PLOT SCALE = 40.0000' / in.	DRAWN - CJ	REVISED -
PLOT DATE = 6/8/2020	CHECKED - LP	REVISED -
	DATE - 06/09/2020	REVISED -

**STATE OF ILLINOIS  
 DEPARTMENT OF TRANSPORTATION**

**DETECTOR LOOP REPLACEMENT PLAN  
 US RTE. 30 (CENTER ST.) AT WESTERN AVE.**

SCALE: 1"=20' SHEET OF SHEETS STA. TO STA.

F.A.P. RTE. 575	SECTION 2020-092-1	COUNTY WILL	TOTAL SHEETS 23	SHEET NO. 17
			CONTRACT NO. 62L70	
ILLINOIS FED. AID PROJECT				



MODEL: D:\DWG\...  
 FILE: NAME: SWP\...  
 PLOTTED: 6/8/2020

USER NAME = jiangc	DESIGNED - CJ	REVISED -
PLOT SCALE = 40.0000' / in.	DRAWN - CJ	REVISED -
PLOT DATE = 6/8/2020	CHECKED - LP	REVISED -
	DATE - 06/09/2020	REVISED -

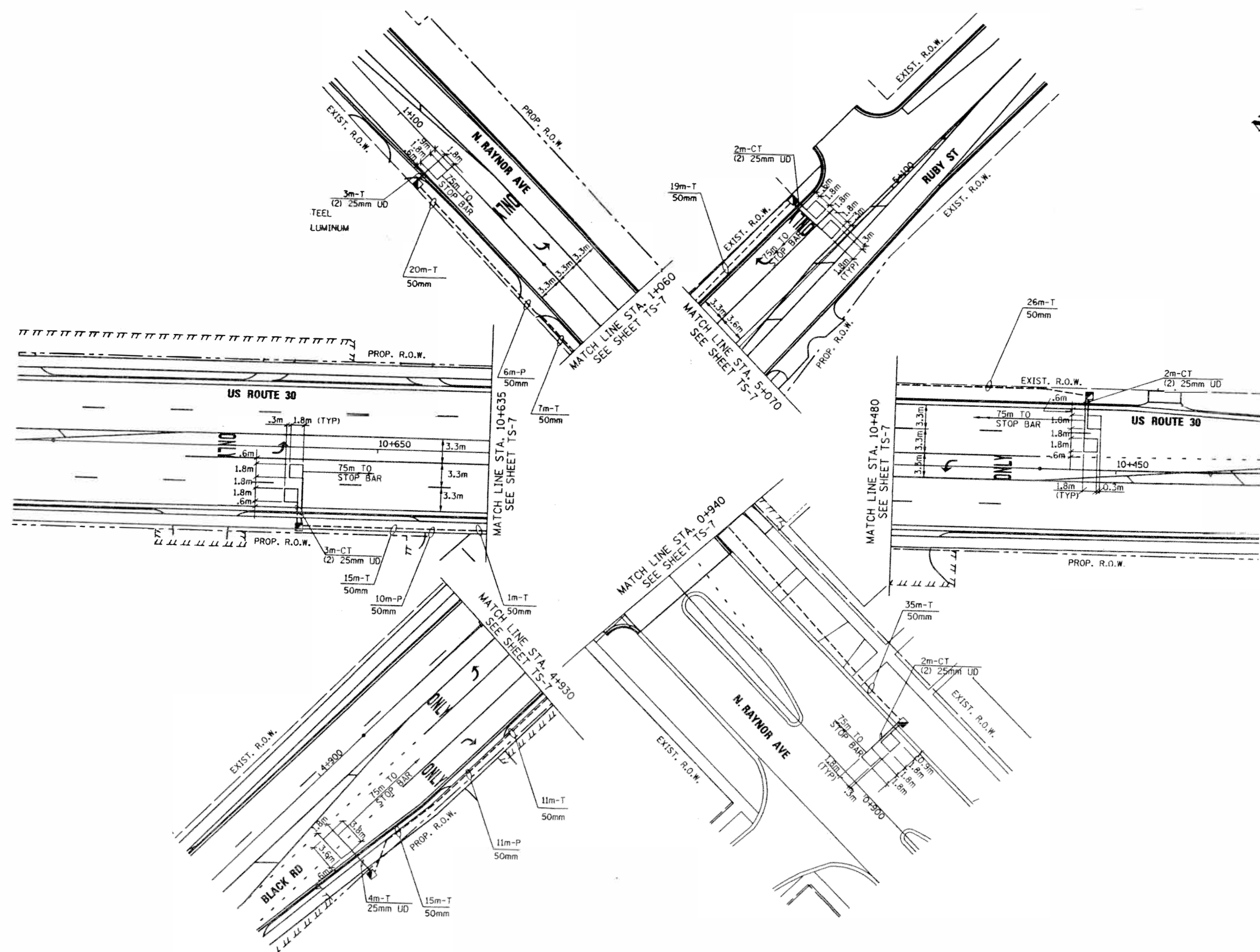
**STATE OF ILLINOIS**  
**DEPARTMENT OF TRANSPORTATION**

**DETECTOR LOOP REPLACEMENT PLAN**  
**US RTE. 30 (PLAINFIELD RD.) AT RAYNOR AVE. AND BLACK RD.**

F.A.D. RTE. 575	SECTION 2020-092-I	COUNTY WILL	TOTAL SHEETS 23	SHEET NO. 18
CONTRACT NO. 62L70				
ILLINOIS FED. AID PROJECT				

SCALE: 1"=20' SHEET OF SHEETS STA. TO STA.





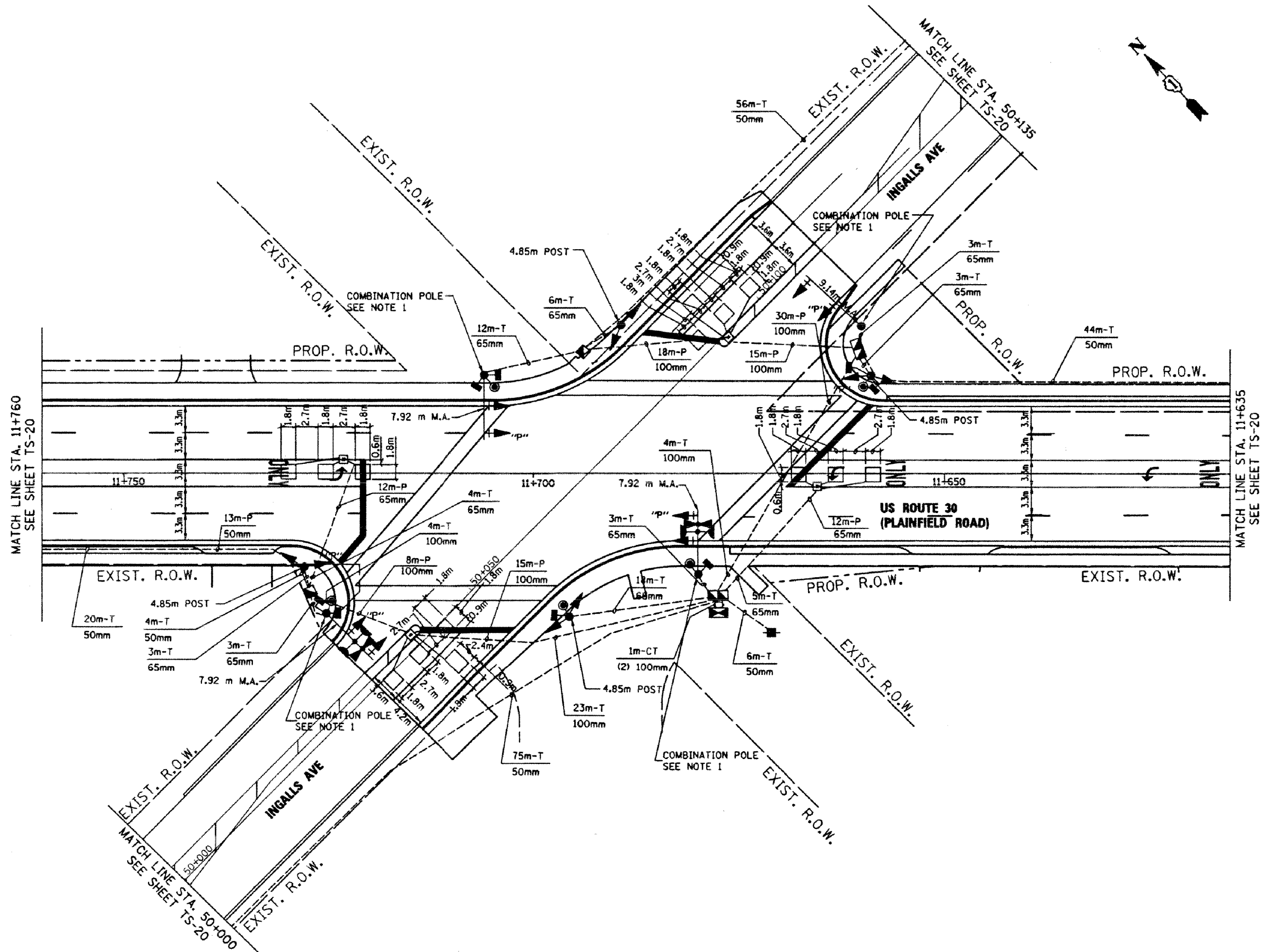
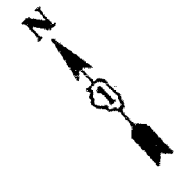
MODEL: Default  
 FILE NAME: S:\P\1919\621.ZDC\ADDUS 30 Plainfield Rd @ Raynor Ave AND Black Rd.2.dgn

USER NAME = jiangc	DESIGNED - CJ	REVISED -
	DRAWN - CJ	REVISED -
PLOT SCALE = 40.0000' / in.	CHECKED - LP	REVISED -
PLOT DATE = 6/8/2020	DATE - 06/09/2020	REVISED -

**STATE OF ILLINOIS**  
**DEPARTMENT OF TRANSPORTATION**

<b>DETECTOR LOOP REPLACEMENT PLAN</b> <b>US RTE. 30 (PLAINFIELD RD.) AT RAYNOR AVE. AND BLACK RD.</b>			
SCALE: 1"=20'	SHEET	OF SHEETS	STA. TO STA.

F.A.D. RTE.	SECTION	COUNTY	TOTAL SHEETS	SHEET NO.
575	2020-092-I	WILL	23	19
CONTRACT NO. 62L70				
ILLINOIS FED. AID PROJECT				



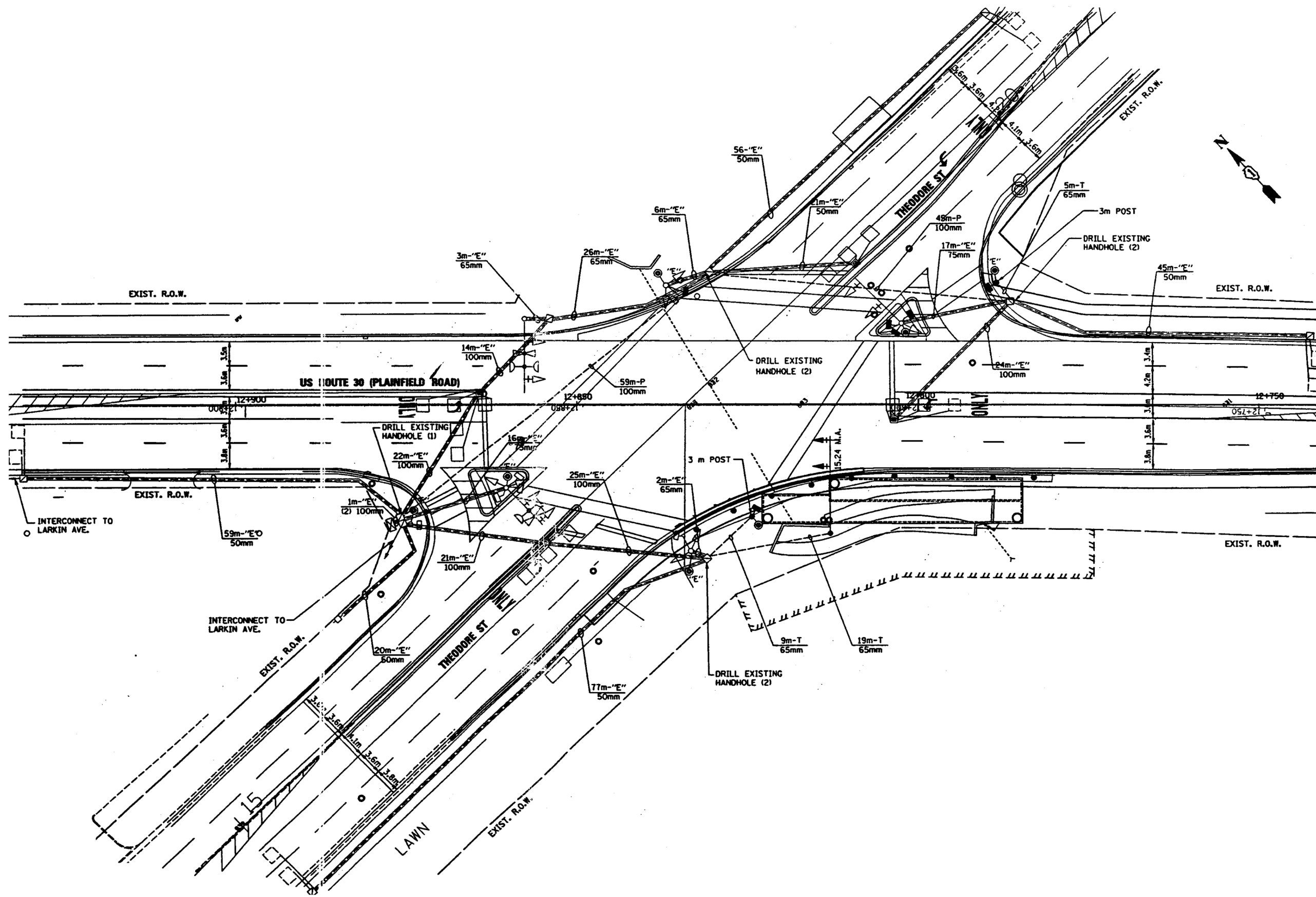
MODEL: D:\dtp\...  
 FILE NAME: S:\P\106\62170\CD\DD30\_Planfield @ Ingalls.dgn

USER NAME = jiangc	DESIGNED - CJ	REVISED -
DRAWN - CJ	REVISIONS -	
PLOT SCALE = 40,0000 ' / in.	CHECKED - LP	REVISED -
PLOT DATE = 6/8/2020	DATE - 06/09/2020	REVISED -

**STATE OF ILLINOIS**  
**DEPARTMENT OF TRANSPORTATION**

<b>DETECTOR LOOP REPLACEMENT PLAN</b> <b>US RTE. 30 (PLAINFIELD RD.) AT INGALLS AVE.</b>			
SCALE: 1"=20'	SHEET	OF SHEETS	STA. TO STA.

F.A.P. RTE.	SECTION	COUNTY	TOTAL SHEETS	SHEET NO.
575	2020-092-I	WILL	23	20
CONTRACT NO. 62L70				
ILLINOIS FED. AID PROJECT				



MODEL: Default  
 FILE NAME: S:\WP\Bns\62L70C\DDIUS 30 @ IL 7 Theodore.dgn

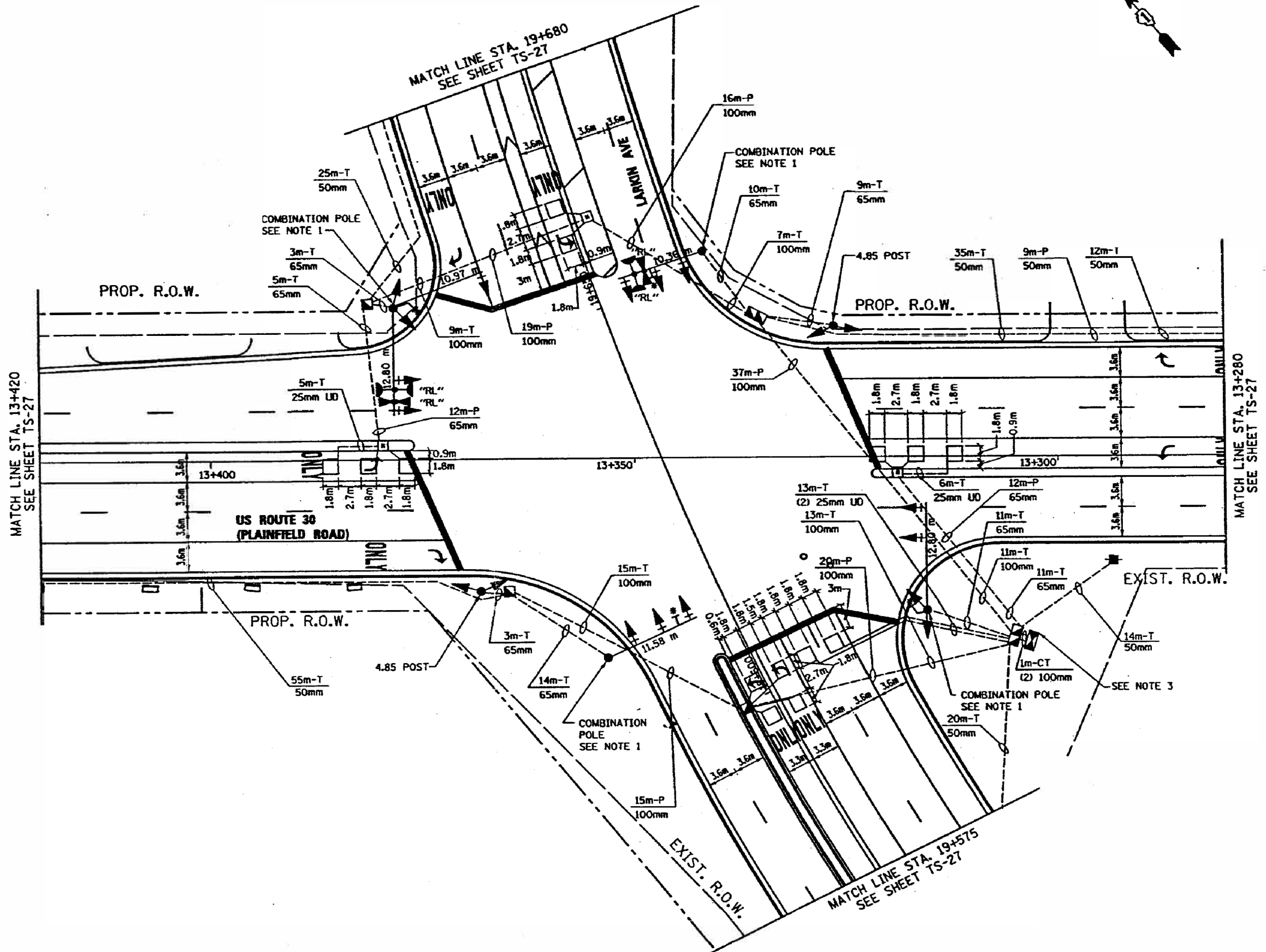
USER NAME = jiangc	DESIGNED - CJ	REVISED -
	DRAWN - CJ	REVISED -
PLOT SCALE = 40,0000 ' / in.	CHECKED - LP	REVISED -
PLOT DATE = 6/8/2020	DATE - 06/09/2020	REVISED -

**STATE OF ILLINOIS**  
**DEPARTMENT OF TRANSPORTATION**

**DETECTOR LOOP REPLACEMENT PLAN**  
**US RTE. 30 (PLAINFIELD RD.) AT IL RTE. 7 (THEODORE ST.)**

SCALE: 1"=20'      SHEET      OF      SHEETS      STA.      TO      STA.

F.A.P. RTE.	SECTION	COUNTY	TOTAL SHEETS	SHEET NO.
575	2020-092-I	WILL	23	21
CONTRACT NO. 62L70				
ILLINOIS FED. AID PROJECT				



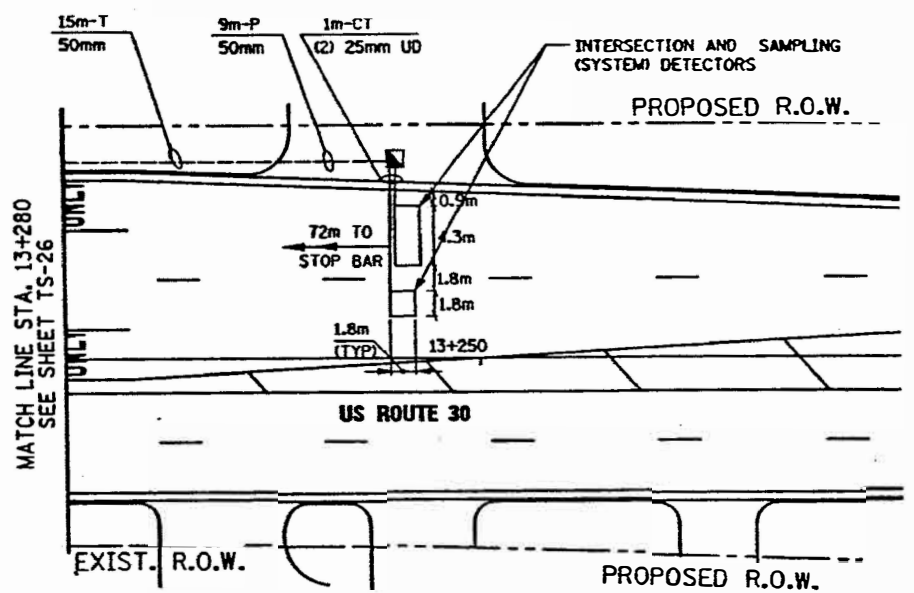
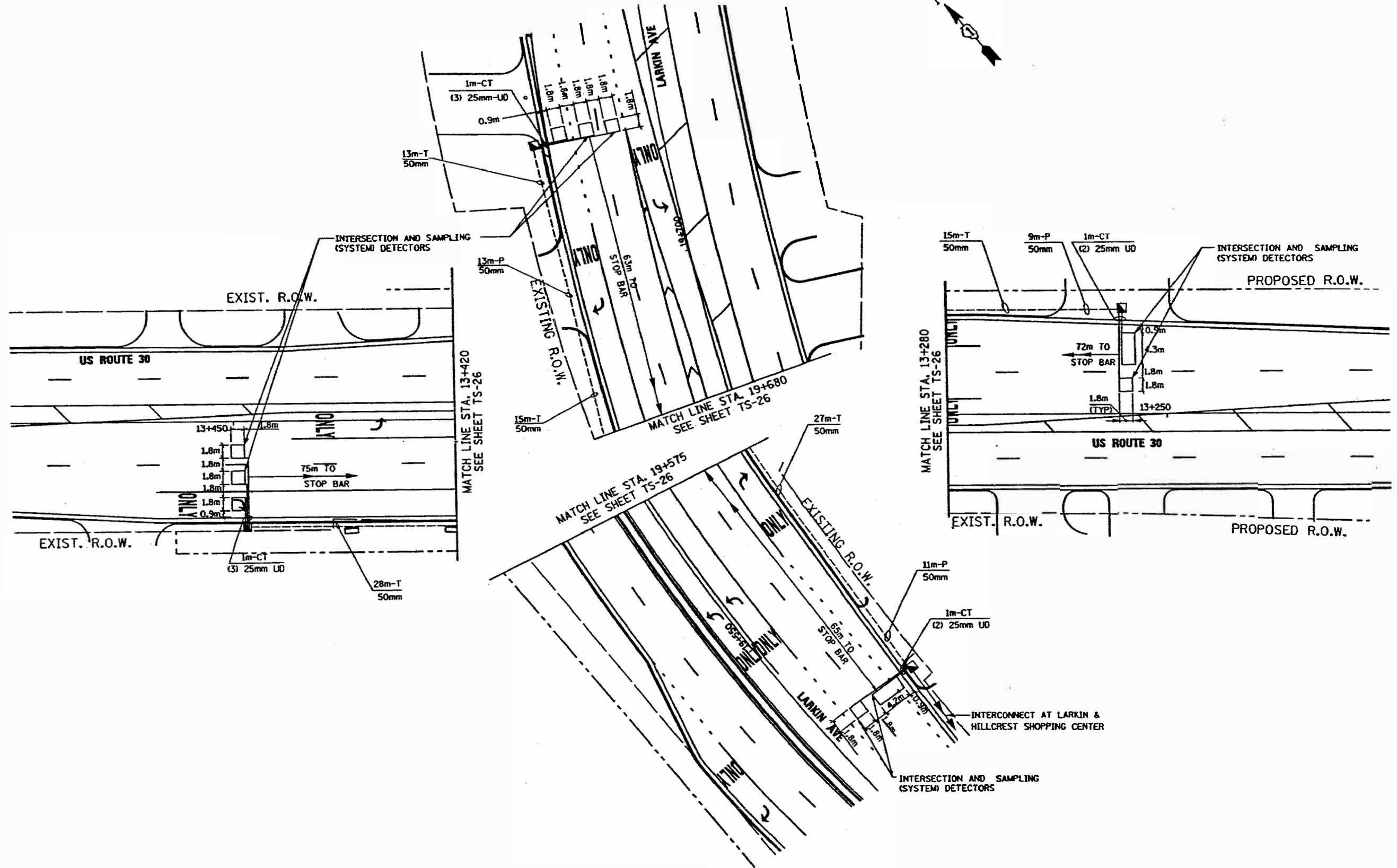
MODEL: D:\asht\...  
 FILE NAME: S:\P\1909\621.ZDCADDUS 30 @ N LARKIN AVE 1.dwg

USER NAME = jiangc	DESIGNED - CJ	REVISED -
	DRAWN - CJ	REVISED -
PLOT SCALE = 40.0000' / in.	CHECKED - LP	REVISED -
PLOT DATE = 6/8/2020	DATE = 06/09/2020	REVISED -

**STATE OF ILLINOIS**  
**DEPARTMENT OF TRANSPORTATION**

**DETECTOR LOOP REPLACEMENT PLAN**  
**US RTE.30 (PLAINFIELD RD) AT N LARKIN AVE.**  
 SCALE: 1"=20'    SHEET    OF    SHEETS    STA.    TO STA.

F.A.D. RTE.	SECTION	COUNTY	TOTAL SHEETS	SHEET NO.
575	2020-092-I	WILL	23	22
CONTRACT NO. 62L70				
ILLINOIS FED. AID PROJECT				



MODEL: Default  
 FILE NAME: S:\WP\Jiang\62L70\CADD\US 30 @ N LARKIN AVE 2.dgn

USER NAME = jiangjcc	DESIGNER = CJ	REVISED =
DRAWN = CJ	CHECKED = LP	REVISED =
PLOT SCALE = 40,0000' / in.	DATE = 06/09/2020	REVISED =
PLOT DATE = 6/8/2020		

**STATE OF ILLINOIS**  
**DEPARTMENT OF TRANSPORTATION**

**DETECTOR LOOP REPLACEMENT PLAN**  
**US RTE. 30 (PLAINFIELD RD.) AT N LARKIN AVE.**

SCALE: 1"=20'      SHEET    OF    SHEETS    STA.                      TO STA.

F.A.P. RT.	SECTION	COUNTY	TOTAL SHEETS	SHEET NO.
575	2020-092-1	WILL	23	23
				CONTRACT NO. 62L70
ILLINOIS FED. AID PROJECT				