

STATE OF ILLINOIS
DEPARTMENT OF TRANSPORTATION
DIVISION OF HIGHWAYS

F.A.P. RTE.	SECTION	COUNTY	TOTAL SHEETS	SHEET NO.
322	(24,25)RS-3	FAYETTE	14	1
		ILLINOIS	CONTRACT NO. 74472	

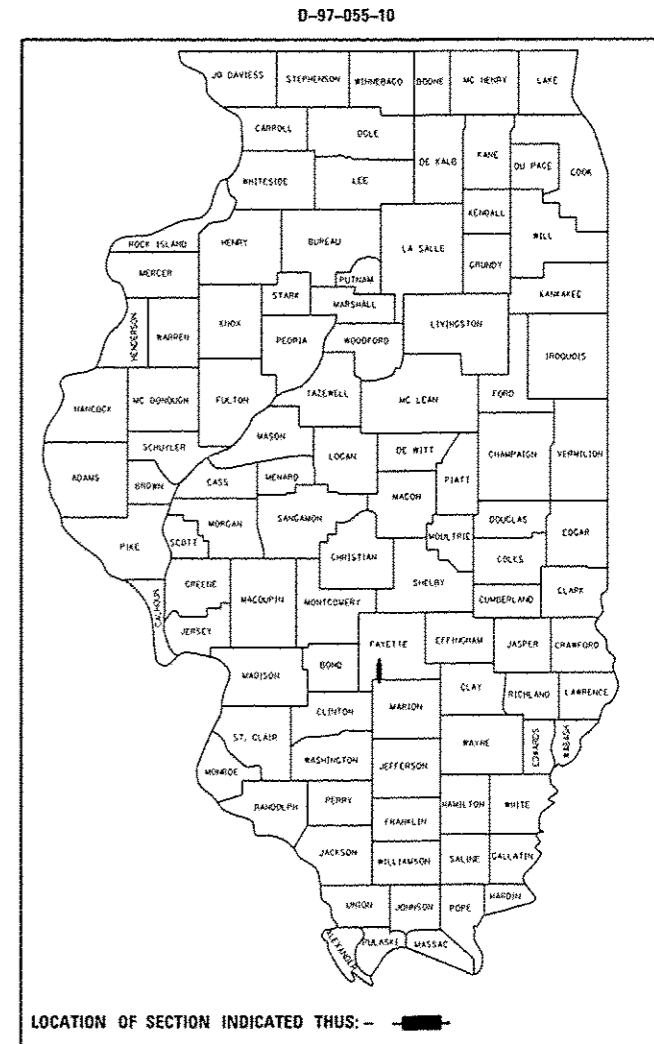
FOR INDEX OF SHEETS, SEE SHEET NO. 2

**PROPOSED
HIGHWAY PLANS**

FAP ROUTE 322 (US 51)
SECTION (24,25)RS-3
PROJECT ACNHPP-0322 (098)
RESURFACING
FAYETTE COUNTY

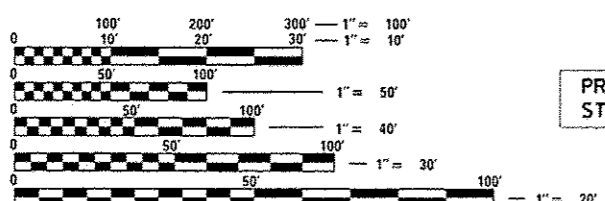
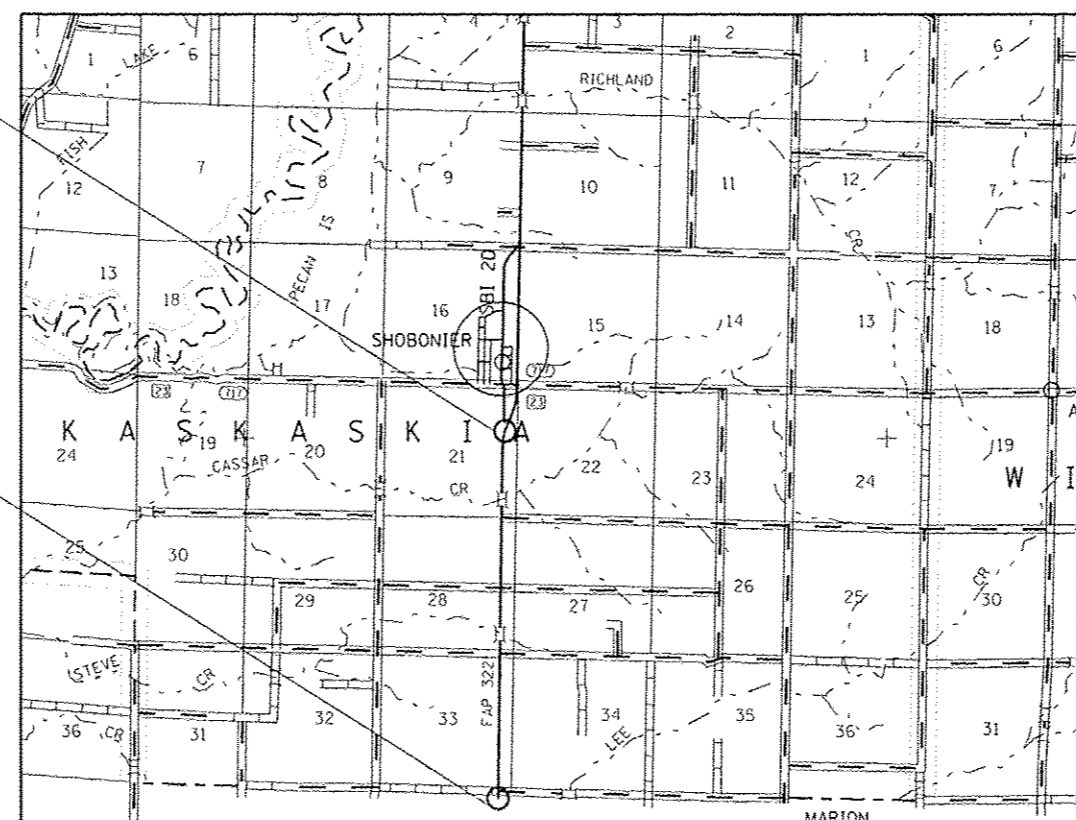
ADT = 3,000 (2011)

C-97-114-10



PROJECT BEGINS:
STA. 375+25

PROJECT ENDS:
STA. 502+48



FULL SIZE PLANS HAVE BEEN PREPARED USING STANDARD ENGINEERING SCALES. REDUCED SIZED PLANS WILL NOT CONFORM TO STANDARD SCALES. IN MAKING MEASUREMENTS ON REDUCED PLANS, THE ABOVE SCALES MAY BE USED.

J.U.L.I.E.
JOINT UTILITY LOCATION INFORMATION FOR EXCAVATION
1-800-892-0123
OR 811

PROJECT ENGINEER: MARK DAUGHERTY
PROJECT MANAGER: KALEB HIRTZEL
PHONE: (217)-342-8313
CONTRACT NO. 74472

LENGTH = 12,723 FT. = 2.41 MILE

STATE OF ILLINOIS
DEPARTMENT OF TRANSPORTATION
DIVISION OF HIGHWAYS

SUBMITTED August 14, 2015
Roger L. Dushell FOR
DEPUTY DIRECTOR OF HIGHWAYS, REGION ENGINEER

Oct 2, 2015
John D. Baranzelli PE
ENGINEER OF DESIGN AND ENVIRONMENT

Oct 2, 2015
Cher Osman PE
DIRECTOR OF HIGHWAYS, CHIEF ENGINEER

PRINTED BY THE AUTHORITY
OF THE STATE OF ILLINOIS

GENERAL NOTES

THE CONTRACTOR SHALL PROVIDE INTERNET ACCESS TO THE HOT-MIX ASPHALT PLANT QUALITY CONTROL LAB SO THAT HOT-MIX ASPHALT PLANT REPORTS CAN BE E-MAILED TO THE DISTRICT HEADQUARTERS. THIS WORK SHALL BE INCLUDED IN THE COST OF HOT-MIX ASPHALT ITEMS.

AGGREGATE WEDGE SHOULDERS, TYPE B SHALL BE CRUSHED STONE, CRUSHED CONCRETE, OR RAP.

AGGREGATE SURFACE COURSE, TYPE B SHALL BE CRUSHED STONE OR CRUSHED CONCRETE.

THE COST FOR REMOVAL OF TEMPORARY RAMP SHALL BE INCLUDED IN THE UNIT PRICE FOR TEMPORARY RAMP.

SHORT TERM PAVEMENT MARKING SHALL BE APPLIED TO THE MILLED SURFACE, LEVELING BINDER AND HOT-MIX ASPHALT SURFACE COURSE AS SPECIFIED IN SECTION 703 OF THE STANDARD SPECIFICATIONS. TEMPORARY TAPE SHALL BE USED ON THE SURFACE COURSE AND PAINT SHALL BE USED ON MILLED SURFACE AND LEVELING BINDER.

THE TOTAL QUANTITY OF PAINT PAVEMENT MARKING - LINE 4" CONSISTS OF 25,446 FEET OF WHITE AND 5,023 FEET OF YELLOW.

THE EXISTING PAVEMENT SHALL BE PATCHED IN ACCORDANCE WITH SECTION 442 OF THE STANDARD SPECIFICATIONS AND THE SPECIAL PROVISIONS. THE QUANTITY OF PATCHING SHOWN ON THE PLANS IS AN ESTIMATE ONLY AND THE FINAL LOCATIONS AND QUANTITY SHALL BE DETERMINED BY THE ENGINEER IN THE FIELD.

THE FOLLOWING RATES OF APPLICATION HAVE BEEN USED IN CALCULATING PLAN QUANTITIES:

BIT MATLS (PRIME COAT) 0.05 LBS/SQ FT & 0.025 LBS/SQ FT
HOT-MIX ASPHALT 112 LBS/SQ YD/INCH

THE FOLLOWING MIXTURE REQUIREMENTS ARE APPLICABLE FOR THIS PROJECT:

MIXTURE USE: HMA SURFACE COURSE, 1 1/2"
APPLICATION: HOT-MIX ASPHALT SURFACE COURSE, MIX "C", N70
PG GRADE: PG 64-22
DESIGN AIR VOIDS: 4.0% @ NDESIGN = 70
MIXTURE COMPOSITION: IL-9.5
FRICTION AGGREGATE: MIXTURE C

MIXTURE USE: HMA LEVELING BINDER, 3/4"
APPLICATION: LEVELING BINDER (MACHINE METHOD), N70
PG GRADE: PG 64-22
DESIGN AIR VOIDS: 4.0% @ NDESIGN = 70
MIXTURE COMPOSITION: IL-9.5
FRICTION AGGREGATE: N/A

MIXTURE USE: INCIDENTAL HMA SURFACING
APPLICATION: HOT-MIX ASPHALT SURFACE COURSE, MIX "C", N70
PG GRADE: PG 64-22
DESIGN AIR VOIDS: 4.0% @ NDESIGN = 70
MIXTURE COMPOSITION: IL-9.5
FRICTION AGGREGATE: MIXTURE C

MIXTURE USE: CLASS D PATCHING
APPLICATION: HOT-MIX ASPHALT BINDER COURSE, IL-19.0, N70
PG GRADE: PG 64-22
DESIGN AIR VOIDS: 4.0% @ NDESIGN = 70
MIXTURE COMPOSITION: IL-19.0
FRICTION AGGREGATE: N/A

INDEX OF SHEETS

SHEET NO.	TITLE
1	COVER SHEET
2	INDEX OF SHEETS AND GENERAL NOTES
3-4	SUMMARY OF QUANTITIES
5	TYPICAL SECTIONS
6	SCHEDULES
7	ENTRANCE DETAILS AND SCHEDULE
8	SURVEY TIES
9	DETAILS
10	TIRTL TRAFFIC COUNTER
11-14	PAVEMENT MARKING AND RAISED REFLECTIVE PAVEMENT MARKER APPLICATIONS

THE FOLLOWING STANDARDS ARE A PART OF THESE PLANS AND ARE INCLUDED AFTER SHEET NO. 14:

00001-06	STANDARD SYMBOLS, ABBREVIATIONS AND PATTERNS
001006	DECIMAL OF AN INCH AND OF A FOOT
406201-01	MAILBOX TURNOUT
442201-03	CLASS C AND D PATCHES
642006	SHOULDER RUMBLE STRIPS, 8 IN.
701006-05	OFF-RD OPERATIONS, 2L, 2W, 15' TO 24" FROM PAVEMENT EDGE
701011-04	OFF-RD MOVING OPERATIONS, 2L, 2W, DAY ONLY
701201-04	LANE CLOSURE, 2L, 2W, DAY ONLY, FOR SPEEDS >= 45 MPH
701301-04	LANE CLOSURE, 2L, 2W, SHORT TIME OPERATIONS
701306-03	LANE CLOSURE, 2L, 2W, SLOW MOVING OPERATIONS, DAY ONLY, FOR SPEEDS >= 45MPH
701311-03	LANE CLOSURE, 2L, 2W MOVING OPERATIONS - DAY ONLY
701901-04	TRAFFIC CONTROL DEVICES
780001-05	TYPICAL PAVEMENT MARKINGS
781001-03	TYPICAL APPLICATIONS RAISED REFLECTIVE PAVEMENT MARKERS

FILE NAME =	USER NAME = staffernk	DESIGNED -	REVISED -	STATE OF ILLINOIS DEPARTMENT OF TRANSPORTATION	INDEX OF SHEETS AND GENERAL NOTES	F.A.P. RTE.	SECTION	COUNTY	TOTAL SHEETS	SHEET NO.
pw\11084EB\0\INTEG\Illinois.gov\PI\DOT\O	Documents\DOT Offices\District 7\Projects\7447	DRAWN to\CAD\Sheet\0774472-Dannote.dg	REVISED -			322	024,25RS-3	Fayette	14	2
	PLOT SCALE = 1/20,000 ' / in.	CHECKED -	REVISED -			CONTRACT NO. 74472				
Default	PLOT DATE = 8/14/2015	DATE -	REVISED -			SCALE: N/A	SHEET 1 OF 1 SHEETS STA. TO STA.	ILLINDISTED AID PROJECT		

80% FED
20% STATE

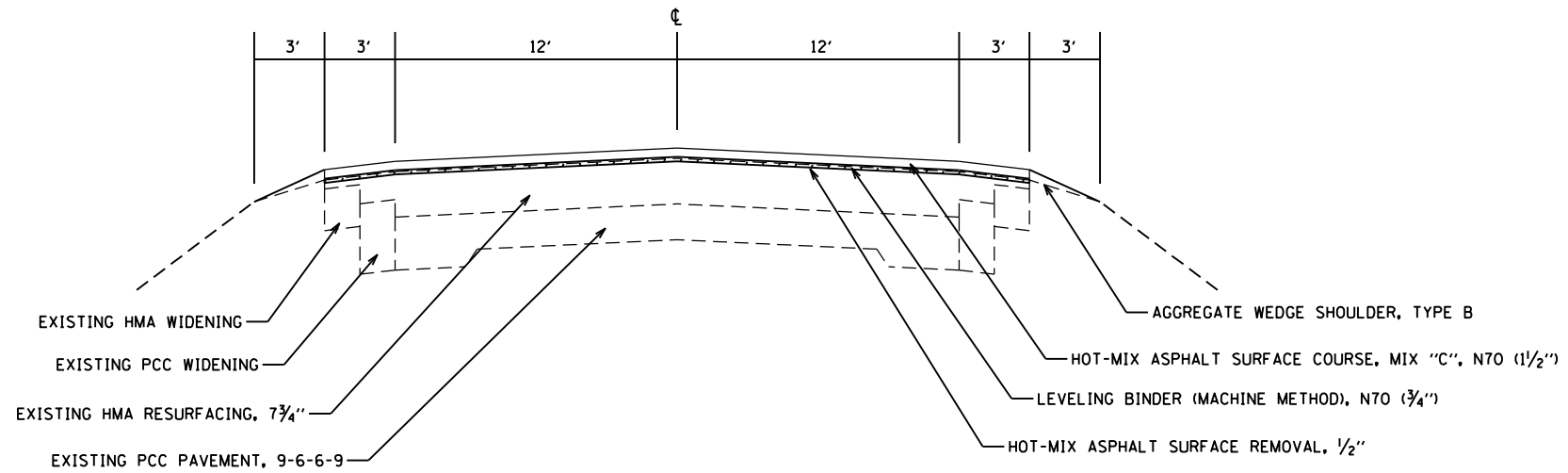
80% FED
20% STATE

SUMMARY OF QUANTITIES			TOTAL QUANTITIES	CONSTRUCTION TYPE CODE		
CODE NO	ITEM	UNIT		0005		
40200800	AGGREGATE SURFACE COURSE, TYPE B	TON	22	22		
40600275	BITUMINOUS MATERIALS (PRIME COAT)	POUND	28627	28627		
40600635	LEVELING BINDER (MACHINE METHOD), N70	TON	1781	1781		
40600982	HOT-MIX ASPHALT SURFACE REMOVAL - BUTT JOINT	SO YD	233	233		
40600990	TEMPORARY RAMP	SO YD	83	83		
40603315	HOT-MIX ASPHALT SURFACE COURSE, MIX "C", N70	TON	3562	3562		
40800050	INCIDENTAL HOT-MIX ASPHALT SURFACING	TON	39	39		
44000151	HOT-MIX ASPHALT SURFACE REMOVAL, 1/2"	SO YD	38180	38180		
44000158	HOT-MIX ASPHALT SURFACE REMOVAL, 2 1/4"	SO YD	3763	3763		
44201815	CLASS D PATCHES, TYPE II, 14 INCH	SO YD	554	554		
44201819	CLASS D PATCHES, TYPE III, 14 INCH	SO YD	324	324		
44201821	CLASS D PATCHES, TYPE IV, 14 INCH	SO YD	450	450		
48102100	AGGREGATE WEDGE SHOULDER, TYPE B	TON	1198	1198		
64200108	SHOULDER RUMBLE STRIPS, 8 INCH	FOOT	24409	24409		

SUMMARY OF QUANTITIES			TOTAL QUANTITIES	CONSTRUCTION TYPE CODE		
CODE NO	ITEM	UNIT		0005		
67000500	ENGINEER'S FIELD OFFICE, TYPE B	CAL MO	3	3		
67100100	MOBILIZATION	L SUM	1	1		
70100450	TRAFFIC CONTROL AND PROTECTION, STANDARD	L SUM	1	1		
	701201					
70100460	TRAFFIC CONTROL AND PROTECTION, STANDARD	L SUM	1	1		
	701306					
70300100	SHORT TERM PAVEMENT MARKING	FOOT	3817	3817		
70300220	TEMPORARY PAVEMENT MARKING - LINE 4"	FOOT	30469	30469		
70301000	WORK ZONE PAVEMENT MARKING REMOVAL	SQ FT	424	424		
* 72700100	STRUCTURAL STEEL SIGN SUPPORT - BREAKAWAY	POUND	520	520		
* 73400100	CONCRETE FOUNDATIONS	CU YD	1.4	1.4		
* 78001110	PAINT PAVEMENT MARKING - LINE 4"	FOOT	30469	30469		
* 78100100	RAISED REFLECTIVE PAVEMENT MARKER	EACH	159	159		
* X0323388	TRAFFIC COUNTER	EACH	1	1		
X4401198	HOT-MIX ASPHALT SURFACE REMOVAL, VARIABLE	SO YD	467	467		
	DEPTH					

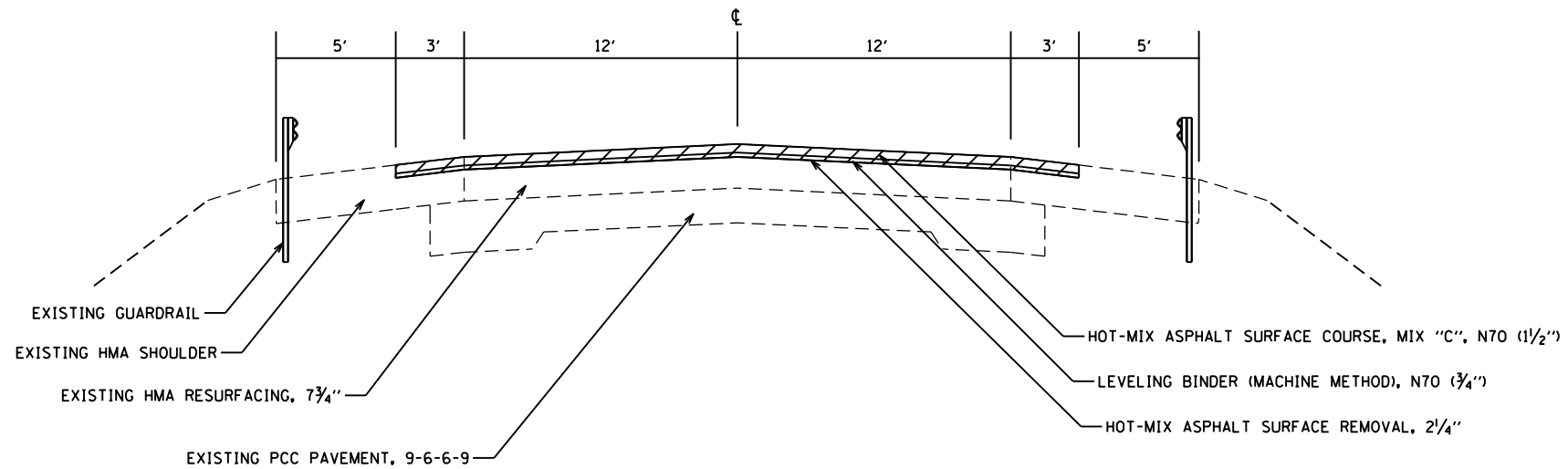
* SPECIALTY ITEM

FILE NAME =	USER NAME = steffennk	DESIGNED -	REVISED -	STATE OF ILLINOIS DEPARTMENT OF TRANSPORTATION	SUMMARY OF QUANTITIES	F.A.P. RTE.	SECTION	COUNTY	TOTAL SHEETS	SHEET NO.
pu:\1\284EBI0NTEG.illinois.gov\FWIDOT\Do	l:\wanta\100T Offices\District 7\Projects\7447	DRAWN -	REVISED -			322	(24,25)RS-3	Fayette	14	3
Defaults	PLOT SCALE = 1/20.0000" / in.	CHECKED -	REVISED -			CONTRACT NO. 74472			ILLINOIS FED. AID PROJECT	
	PLOT DATE = 8/14/2015	DATE -	REVISED -			SCALE: N/A	SHEET 1	OF 1 SHEETS	STA.	TO STA.



TYPICAL SECTION

STA 375+25 TO STA 388+74
 STA 394+98 TO STA 440+85
 STA 445+90 TO STA 502+48



TYPICAL SECTION

STA 388+74 TO STA 394+98
 STA 440+85 TO STA 445+90

FILE NAME =	USER NAME = steffenmk	DESIGNED -	REVISED -	STATE OF ILLINOIS DEPARTMENT OF TRANSPORTATION	TYPICAL SECTIONS			F.A.P. RTE.	SECTION	COUNTY	TOTAL SHEETS	SHEET NO.
pw:\IL\084EBIDINTEG.illinois.gov\PIWIDOT\Documents\IDOT Offices\District 7\Projects\74472\Drawings\CAD\Sheets\0774472-Typicals.dgn	DRAWN	REVIS	REVIS					322	(24,25)RS-3	Fayette	14	5
Default	PLOT SCALE = 100.0000' / 1in.	CHECKED -	REVISED -		CONTRACT NO. 74472			ILLINOIS FED. AID PROJECT				
	PLOT DATE = 8/14/2015	DATE -	REVISED -		SCALE:	SHEET	OF	SHEETS	STA.	TO	STA.	

PAVING SCHEDULE

STATIONING		LENGTH	WIDTH	BITUMINOUS MATERIALS (PRIME COAT)	LEVELING BINDER (MACHINE METHOD), NTO	HMA SURFACE COURSE, MIX "C", N70	AGGREGATE WEDGE SHOULDER, TYPE B	HMA SURFACE REMOVAL, 1/2"	HMA SURFACE REMOVAL, 2 1/4"	HMA SURFACE REMOVAL, VARIABLE DEPTH	HMA SURFACE REMOVAL - BUTT JOINT	TEMPORARY RAMP	SHOULDER RUMBLE STRIPS, 8 In.
FROM	TO	(FEET)	(FEET)	(POUND)	(TON)	(TON)	(TON)	(SQ YD)	(SQ YD)	(SQ YD)	(SQ YD)	(SQ YD)	FOOT
375+25	388+39	1314	30	2956	184	368	128	4380	-	-	117	42	2427
388+39	388+74	35	30	79	5	10	3	-	-	117	-	-	70
388+74	394+98	624	30	1404	87	175	37	-	2080	-	-	-	1248
394+98	395+33	35	30	79	5	10	3	-	-	117	-	-	70
395+33	440+50	4517	30	10163	632	1265	440	15057	-	-	-	-	8576
440+50	440+85	35	30	79	5	10	3	-	-	117	-	-	70
440+85	445+90	505	30	1136	71	141	30	-	1683	-	-	-	1010
445+90	446+25	35	30	79	5	10	3	-	-	117	-	-	70
446+25	502+48	5623	30	12652	787	1574	548	18743	-	-	117	42	10868
TOTALS		12723		28627	1781	3562	1198	38180	3763	467	233	83	24409

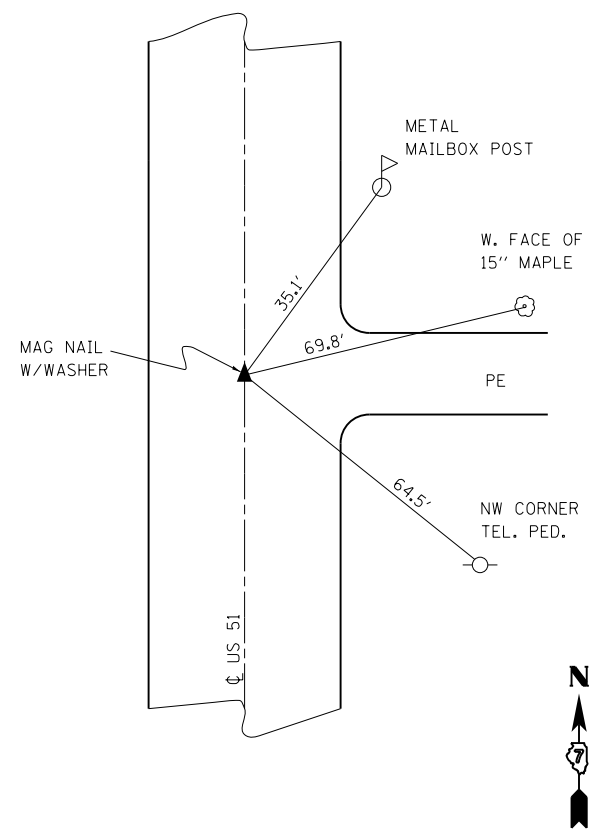
PAVEMENT MARKING

STATIONING		LENGTH	SHORT TERM PAVEMENT MARKING	WORK ZONE PAVEMENT MARKING REMOVAL	TEMPORARY PAVEMENT MARKING - LINE 4"	PAINT PAVEMENT MARKING - LINE 4"	RAISED REFLECTIVE PAVEMENT MARKER
FROM	TO	(FEET)	(FOOT)	(SQ FT)	(FOOT)	(FOOT)	(EACH)
375+77	380+82	505	167.1	18.6	1810.3	1810.3	7
380+82	381+51	69	20.7	2.3	155.3	155.3	1
381+51	390+35	884	265.2	29.5	2873	2873	11
390+35	498+47	10812	3243.6	360.4	24327	24327	135
498+47	502+48	401	120.3	13.4	1303.3	1303.3	5
TOTALS		12671	3817	424	30469	30469	159

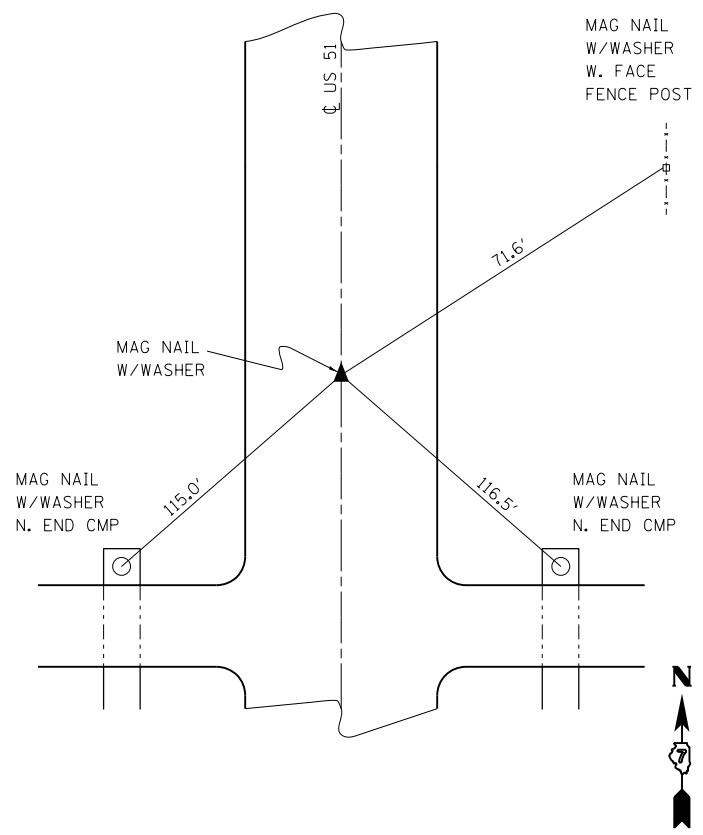
PROTECTING OR RESETTING SURVEY MARKERS

LOCATION STATION	OFFSET (FOOT)	DESCRIPTION	QUANTITY (EACH)
376+00.00	0	MAG NAIL/WASHER	1
407+00.00	0	MAG NAIL/WASHER	1
433+22.45	0	MAG NAIL/WASHER	1
438+00.70	0	MAG NAIL/WASHER	1
449+38.02	0	MAG NAIL/WASHER	1
453+00.70	0	MAG NAIL/WASHER	1
454+38.03	0	MAG NAIL/WASHER	1
468+00.71	0	MAG NAIL/WASHER	1
TOTAL =			8

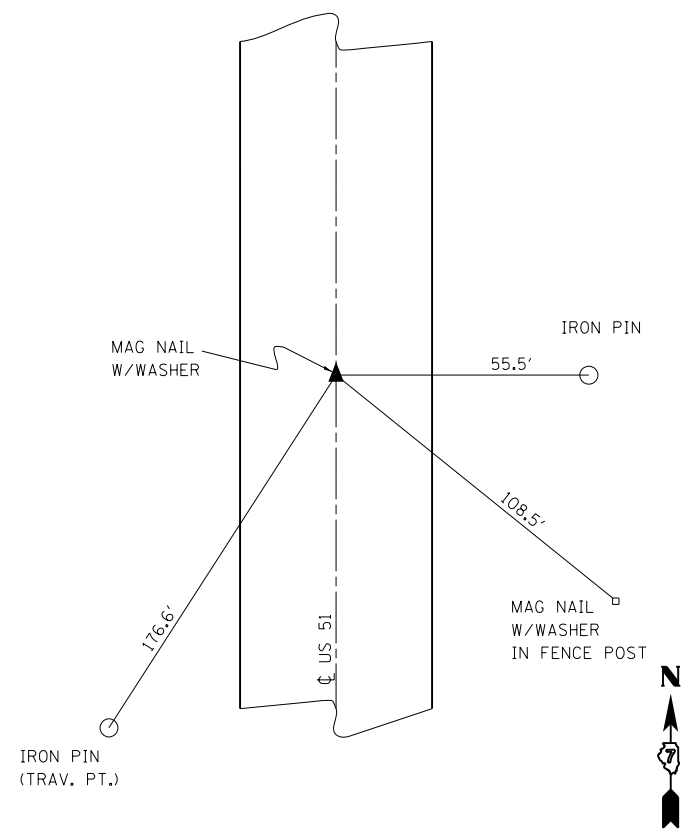
P.T./STA. EQ.
374+05.32AH=
370+43.59BK



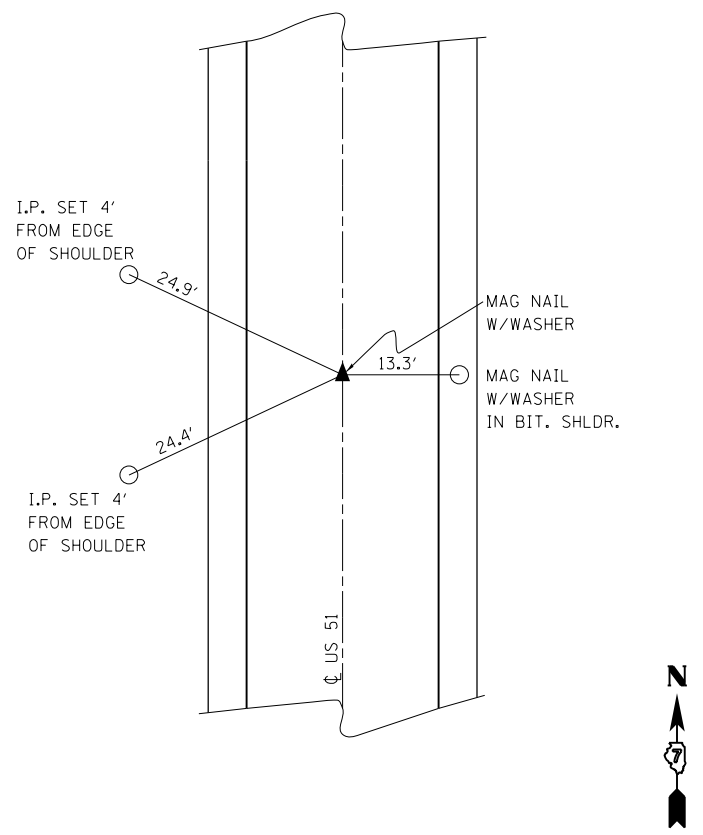
P.O.T.
STA 407+00.00



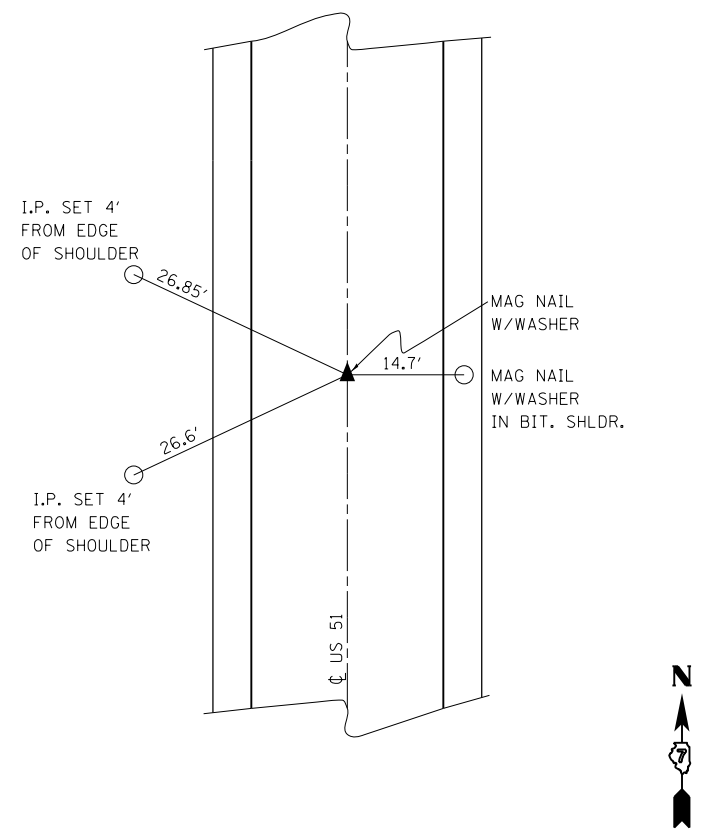
P.O.T.
STA 376+00.00



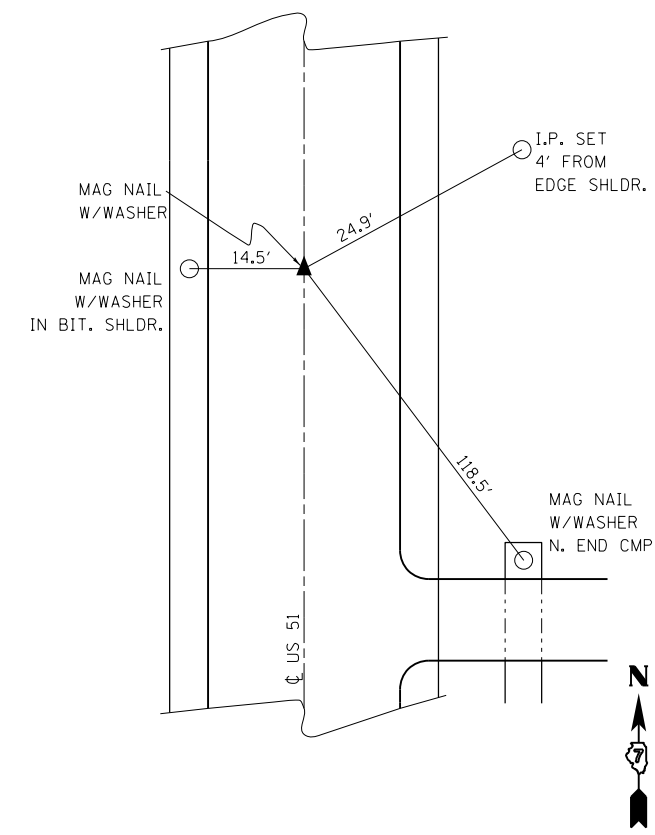
P.O.T.
STA 433+22.45



P.O.T.
STA 468+00.71



P.O.T.
STA 454+38.03

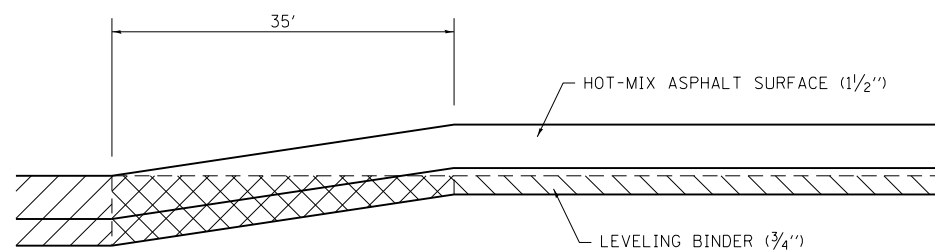


FILE NAME =	USER NAME = steffenk	DESIGNED -	REVISED -
pw:\IL\084EBIDINTEG\illinois.gov\PWIDOT\Documents\DOT Offices\District 7\Projects\74472\Drawings\CAD\Sheets\0774472-sht-A1B.dgn		DRAWN -	REVISED -
Default	PLOT SCALE = 100.0000' / in.	CHECKED -	REVISED -
	PLOT DATE = 8/14/2015	DATE -	REVISED -

**STATE OF ILLINOIS
DEPARTMENT OF TRANSPORTATION**

SURVEY TIES			
SCALE:	SHEET	OF SHEETS	STA. TO STA.

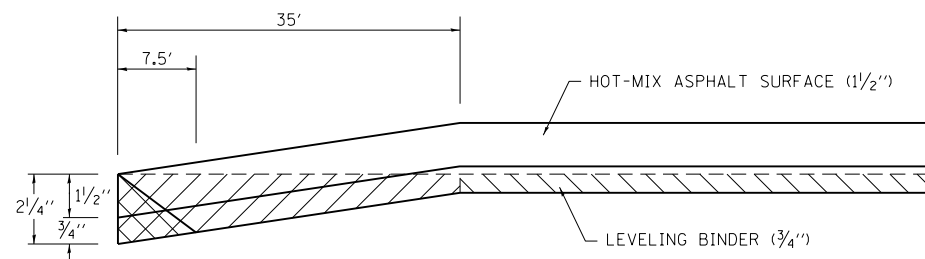
F.A.P. RTE.	SECTION	COUNTY	TOTAL SHEETS	SHEET NO.
322	(24,25)RS-3	Fayette	14	8
CONTRACT NO. 74472			ILLINOIS FED. AID PROJECT	



- HOT-MIX ASPHALT SURFACE REMOVAL, 1/2"
- HOT-MIX ASPHALT SURFACE REMOVAL, VARIABLE DEPTH
- HOT-MIX ASPHALT SURFACE REMOVAL, 2 1/4"

TRANSITION DETAIL

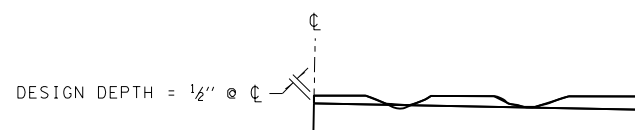
STA 388+39 TO STA 388+74
 STA 394+98 TO STA 395+33
 STA 440+50 TO STA 440+85
 STA 445+90 TO STA 446+25



- HOT-MIX ASPHALT SURFACE REMOVAL - BUTT JOINT
- HOT-MIX ASPHALT SURFACE REMOVAL, 1/2"
- TEMPORARY RAMP

BUTT JOINT DETAIL

STA 375+25 TO STA 375+60
 STA 502+13 TO STA 502+48

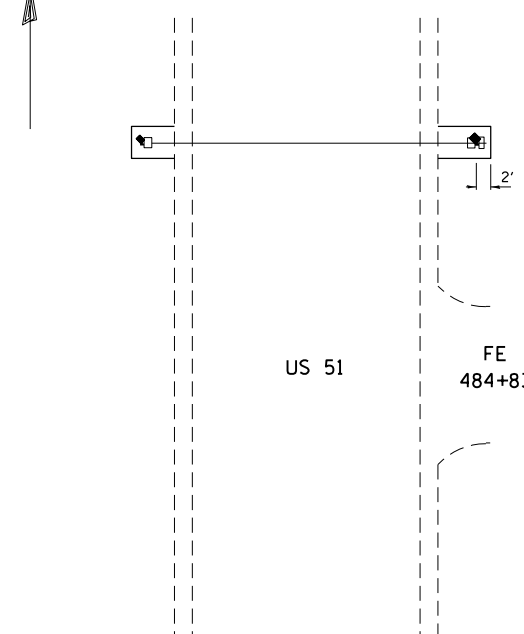
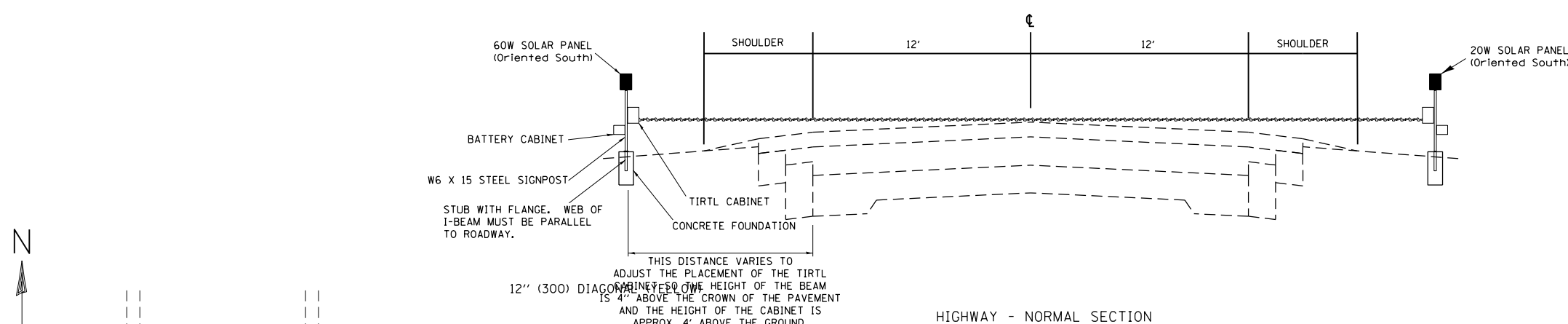


NOTES:

1. MILLING SHALL BE DONE TO ATTAIN A 3/16" SLOPE IN CROWN SECTIONS
2. EXISTING S.E. AND S.E. TRANSITIONS SHALL BE MAINTAINED UNLESS OTHERWISE SHOWN ON THE PLANS.
3. MILLING TO THE BOTTOM OF WHEEL RUTS SHALL NOT BE NECESSARY UNLESS REQUIRED TO OBTAIN SLOPE OR THE DESIGN DEPTH AT CENTERLINE.
4. THE AVERAGE DEPTH OF MILLING IS ESTIMATED TO BE 1/2" BUT MAY VARY IN ISOLATED LOCATIONS.

HOT MIX ASPHALT SURFACE REMOVAL, 1/2" DETAIL

FILE NAME =	USER NAME = steffenmk	DESIGNED -	REVISED -	STATE OF ILLINOIS DEPARTMENT OF TRANSPORTATION	DETAILS			F.A.P. RTE.	SECTION	COUNTY	TOTAL SHEETS	SHEET NO.	
pw:\IL\084EBIDINTEG\illinois.gov\PWIDOT\Documents\DOT Offices\District 7\Projects\74472\Drawings\CAD\Sheets\0774472-Details.dgn								DRAWN				322	(24,25)RS-3
PLOT SCALE = 100.0000' / 1in.					CHECKED -	REVISED -				CONTRACT NO. 74472			
Default					DATE -	REVISED -	SCALE: SHEET OF SHEETS STA. TO STA.			ILLINOIS FED. AID PROJECT			

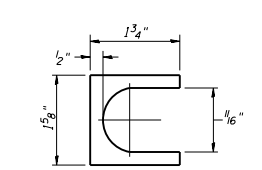
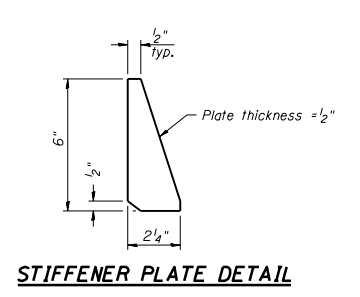
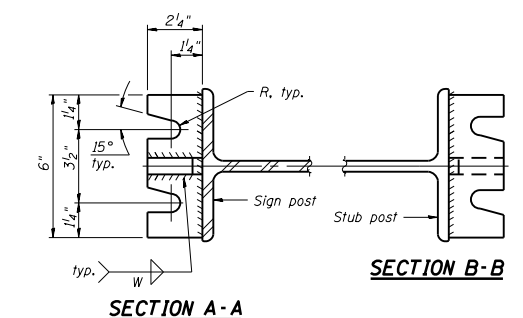
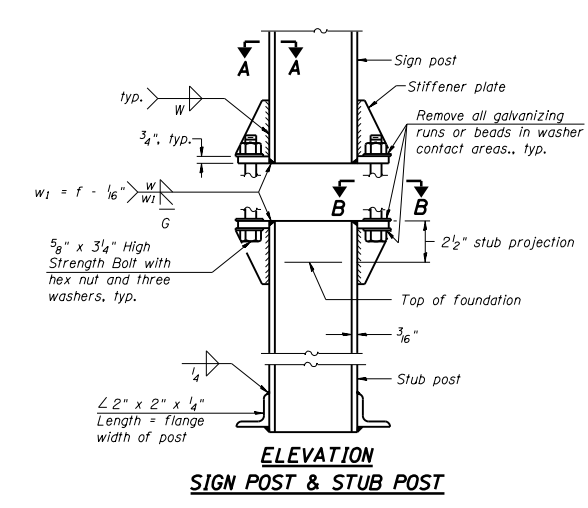
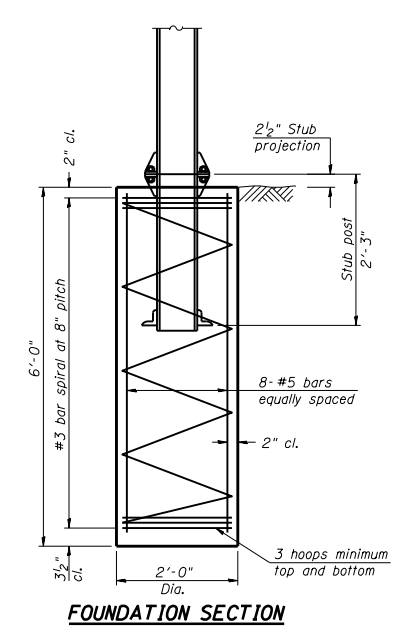


LOCATION: JUST NORTH OF FIELD ENTRANCE
AT STATION 484+83

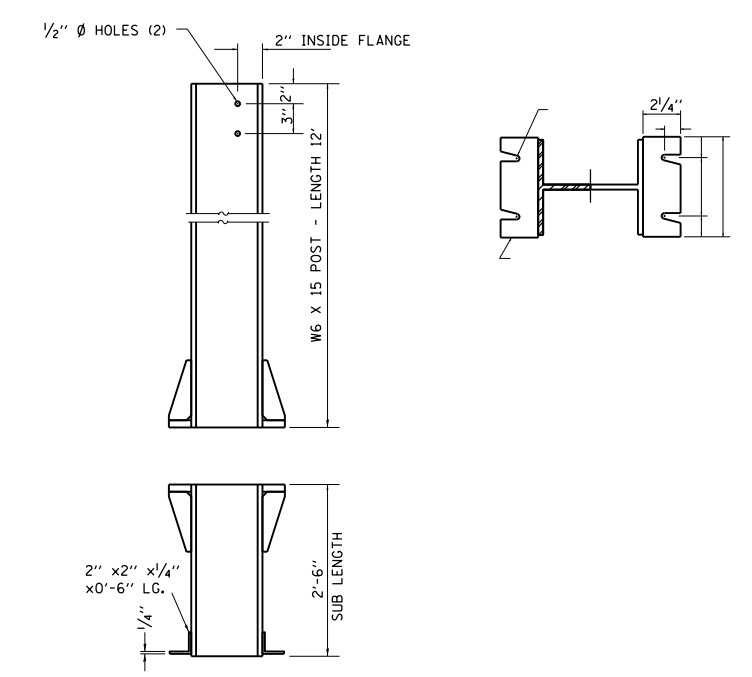
- NOTES:
1. SYSTEM CONSISTS OF TWO W6 X 15 I-BEAM SIGNPOSTS WITH CONCRETE FOUNDATION AND A FLANGE WITH BREAKAWAY BOLTS
 2. THE I-BEAMS ARE 12' LONG AND DRILLED AS PER THE I-BEAM DETAIL TO ACCOMMODATE A PIPE TO ALLOW THE MOUNTING OF THE SOLAR PANEL.
 3. THE WEB OF THE I-BEAM IS TO BE PLACED PARALLEL TO THE LANES.
 4. THE TWO POSTS MUST BE PLACED DIRECTLY ACROSS FROM EACH OTHER AND PERPENDICULAR TO THE LANES.
 5. TWO POSTS ARE REQUIRED LOCATED AS PER THE DRAWING.
 6. THE CABINETS ARE ATTACHED TO THE I-BEAM USING 8" GALVANIZED J-BOLTS.
 7. THE BOTTOM OF THE CABINET HEIGHT MUST BE NO LOWER THAN 4' ABOVE THE GROUND AND BE ABLE TO VIEW ACROSS ALL LANES AT THE CROWN OF THE PAVEMENT.
 8. THE IDOT OFFICE OF PLANNING AND PROGRAMMING DATA MANAGEMENT LAB (RAMON TAYLOR or RICH MARX 217-782-2065) SHALL BE NOTIFIED TWO WEEKS PRIOR TO THE LAYOUT AND SHALL BE PRESENT DURING THE PLACEMENT OF THE POST FOUNDATIONS.

TIRTL TRAFFIC COUNTER
SCHEDULE OF QUANTITIES
(FOR INFORMATION ONLY)

CODE NUMBER	ITEM	UNIT	QUANTITY
72700100	STRUCTURAL STEEL SIGN SUPPORT - BREAKAWAY	POUND	520
73400100	CONCRETE FOUNDATIONS	CU YD	1.4
X0323388	TRAFFIC COUNTER SYSTEM	EACH	1
TIRTL TRAFFIC DATA COLLECTION SYSTEM INCLUDES:			
	Sierra Wireless LS300 EVDO Rev. A VZW	EACH	1
	PHANTOM DUAL BAND ANTENNA P/N RF-ART183055P/281	EACH	1
	TIRTL CABINET 15" X 27" X 16"	EACH	2
	BATTERY CABINET 16.5" X 16" X 11.5" BBA1M w/ #2 Police Lock	EACH	1
	SOLAR PANEL 60 W 12 VDC	EACH	1
	SOLAR PANEL 20 W 12 VDC	EACH	1
	SOLAR CHARGE REGULATOR 6 AMP 12 VDC	EACH	2
	BATTERY - 33 AH ABSORBED ELECTROLYTE 8" X 5.5" X 7" (DEEP CYCLE)	EACH	1
	BATTERY - 80 AH ABSORBED ELECTROLYTE 10" X 6" X 8" (DEEP CYCLE)	EACH	1

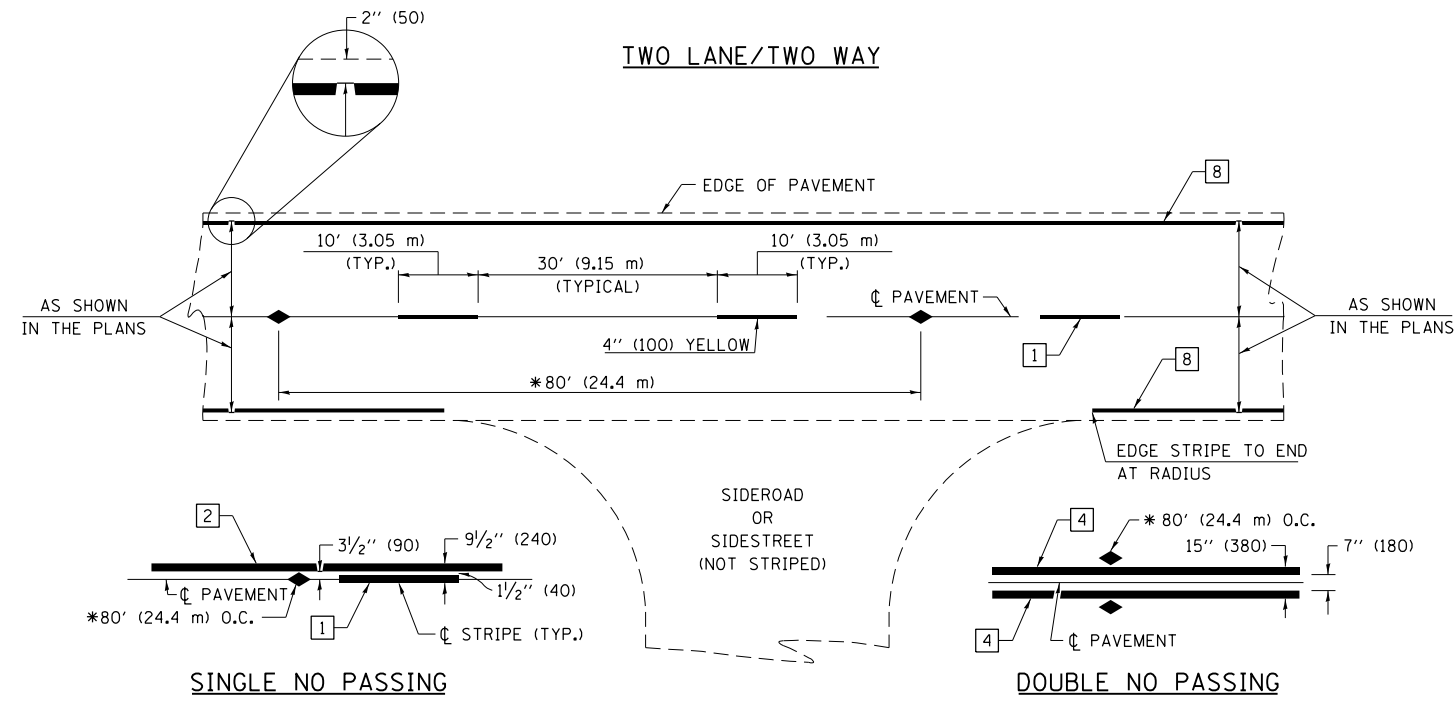


SHIM DETAIL
Furnish two 0.01" thick and two 0.03" thick stainless steel or brass (ASTM B36) shims per post.



BREAK-AWAY WIDE FLANGE STEEL POST DETAILS

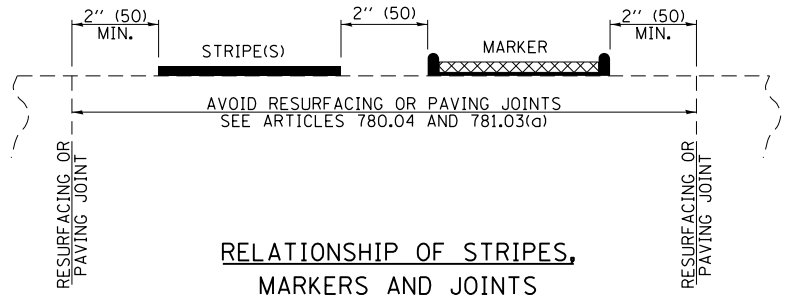
FILE NAME =	USER NAME = steffenmk	DESIGNED -	REVISED -	STATE OF ILLINOIS DEPARTMENT OF TRANSPORTATION	TRAFFIC COUNTER SYSTEM	F.A.P. RTE.	SECTION	COUNTY	TOTAL SHEETS	SHEET NO.	
pw\11084EBIDINTEG.illinois.gov\PIWIDOT\Documents\IDOT Offices\District 7\Projects\74472\Drawings\CAD\Sheets\0774472-Details.dgn		REVISOR =	REVISOR =			322	(24,25)RS-3	Fayette	14	10	
Default	PLOT SCALE = 100.0000' / 1in.	CHECKED -	REVISOR =			CONTRACT NO. 74472					
	PLOT DATE = 8/14/2015	DATE -	REVISOR =			ILLINOIS FED. AID PROJECT					



PAVEMENT MARKING LEGEND

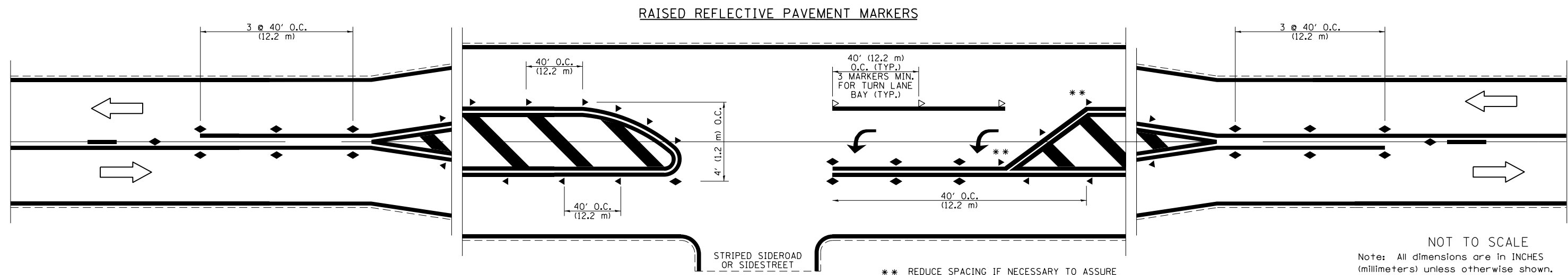
- 1 4" (100) SKIP-DASH (YELLOW)
- 2 4" (100) SOLID (YELLOW)
- 3 12" (300) DIAGONAL (YELLOW)
- 4 4" (100) DOUBLE YELLOW (NARROW)
- 5 12" (300) SOLID WHITE
- 6 RESERVED
- 7 6" (150) SKIP-DASH (WHITE)
- 8 4" (100) SOLID (WHITE)
- 9 12" (300) DIAGONAL (WHITE)
- 10 6" (150) SOLID (WHITE)
- 11 24" (600) STOP BAR (WHITE)
- 12 8" (200) SOLID (WHITE)
- 13 4" (100) PARKING WHITE

* REDUCE TO 40' (12.2 m) O.C. ON CURVES WITH POSTED OR ADVISORY SPEEDS OF 45 mph (70 km/h) OR LESS.

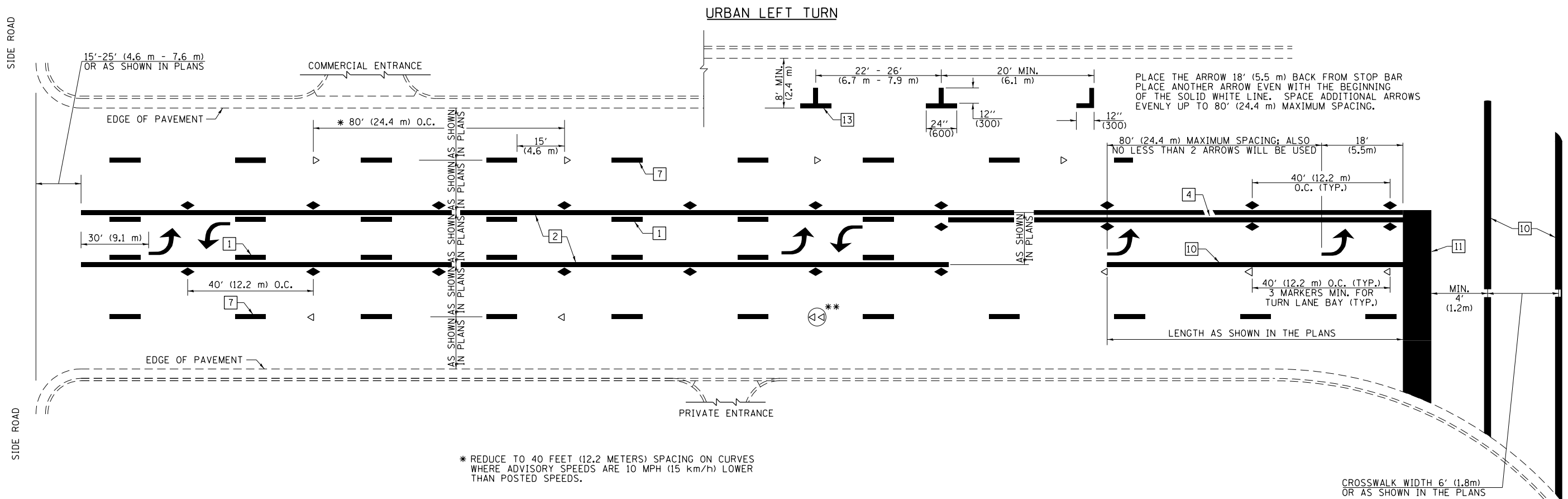


TYPICAL PAVEMENT MARKERS LEGEND

- ◆ TWO-WAY AMBER MARKER
- ▶ ONE-WAY AMBER MARKER
- ▷ ONE-WAY CRYSTAL MARKER



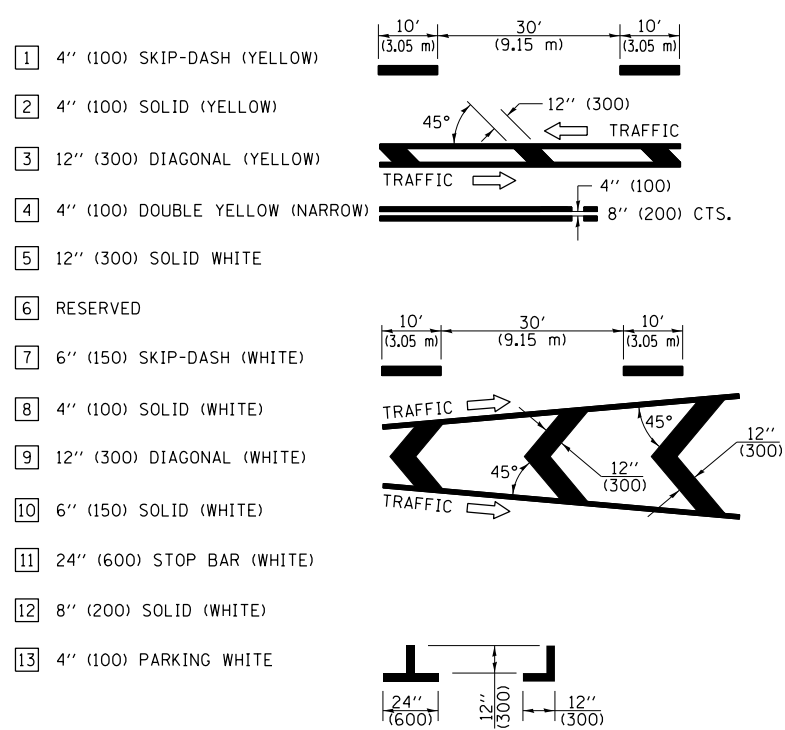
NOT TO SCALE
Note: All dimensions are in INCHES (millimeters) unless otherwise shown.



* REDUCE TO 40 FEET (12.2 METERS) SPACING ON CURVES WHERE ADVISORY SPEEDS ARE 10 MPH (15 km/h) LOWER THAN POSTED SPEEDS.

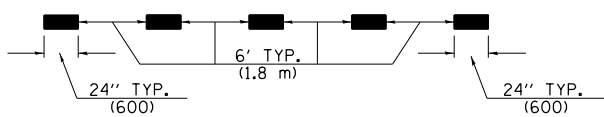
** DOUBLE LANE LINE MARKERS SHALL BE SPECIFIED AND SPACED AS SHOWN IN HIGHWAY STANDARD 781001 FOR MULTI-LANE DIVIDED AND UNDIVIDED HIGHWAYS.

PAVEMENT MARKING LEGEND

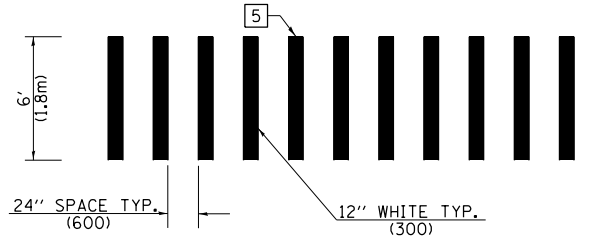


GENERAL NOTES

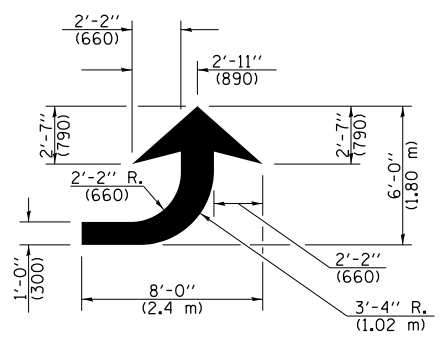
- TURN ARROW PAIRS SHALL BE PLACED AT 250' (75 m) INTERVALS AND SHALL BE EVENLY SPACED BETWEEN BOTH ENDS OF THE BIDIRECTIONAL LEFT TURN LANE. USE A MINIMUM OF TWO PAIRS PER BLOCK.
- THE SOLID YELLOW PAVEMENT MARKINGS [2] SHOULD GENERALLY START OR END NEAR THE RADIUS POINT OF EACH STREET RETURN EXCEPT WHERE ONE OR BOTH ENDS WOULD INCLUDE STOP BARS.
- THE SKIP-DASH PAVEMENT MARKINGS [1] OR [7] SHOULD BE CENTERED BETWEEN BOTH ENDS OF EACH CITY BLOCK AND SHALL BE PLACED SO THEY LINE UP ACROSS FROM EACH OTHER.
- USE LARGE ARROW SIZE FOR BOTH RURAL AND URBAN LOCATIONS. (SEE LAST PAGE OF SECTION 780x FOR SYMBOLS TABLE)
- LANE LINE EXTENSIONS SHALL BE THE SAME COLOR AND WIDTH AS THE LANE LINE BEING EXTENDED.



LANE LINE EXTENSIONS

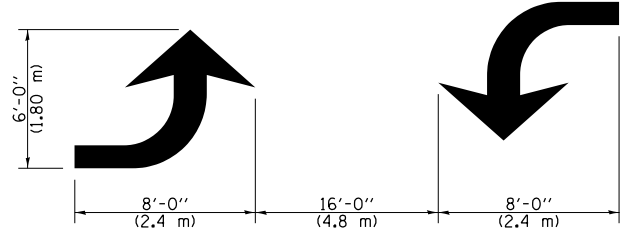


CROSSWALK DETAIL (DECATUR CITY LIMITS ONLY)



LEFT ARROW

REVERSE FOR RIGHT ARROW
AREA = 15.6 SQ. FT. (1.47 m²)
(WHITE)



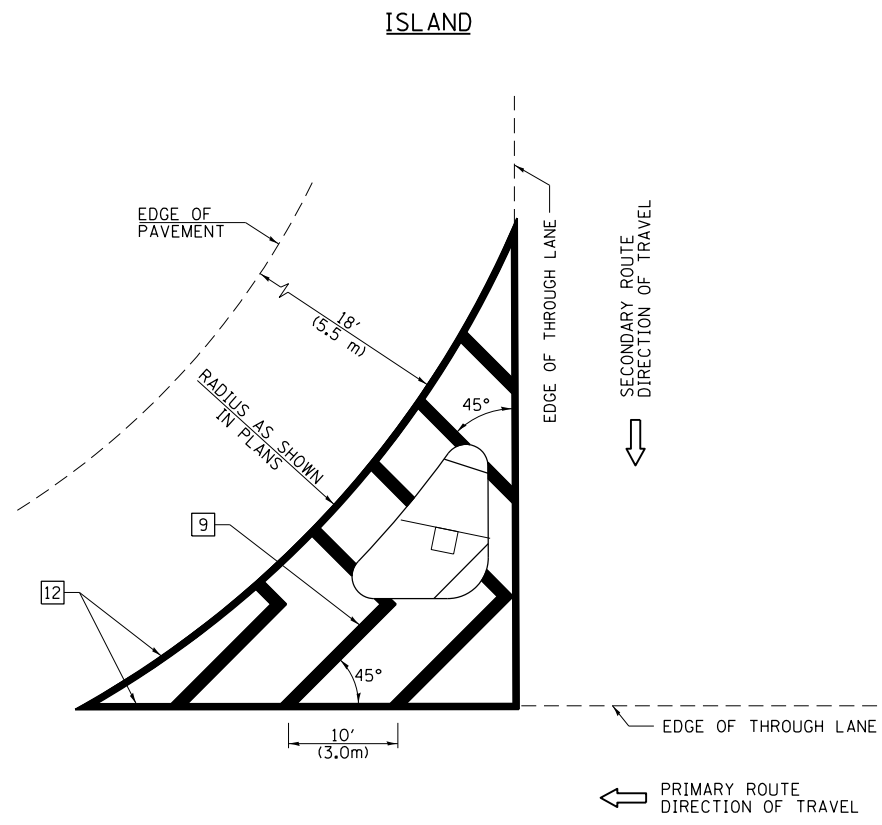
TYPICAL DOUBLE TURN ARROWS (WHITE)

NOT TO SCALE

Note: All dimensions are in INCHES (millimeters) unless otherwise shown.

DISTRICT 7 DETAIL NO. 7800001

FILE NAME =	USER NAME = steffenmk	DESIGNED -	REVISED -	STATE OF ILLINOIS DEPARTMENT OF TRANSPORTATION	PAVEMENT MARKING AND RAISED REFLECTIVE PAVEMENT MARKERS (RURAL & URBAN APPLICATIONS)	F.A.P. RTE.	SECTION	COUNTY	TOTAL SHEETS	SHEET NO.	
pw\1\084EBIDINTEG.illinois.gov\PWIDOT\Documents\DOT Offices\District 7\Projects\74472\Drawings\CABsheets\0774472-Details.dgn		CHECKED -	REVISED -			322	(24,25RS-3)	Fayette	14	12	
PLOT SCALE = 100.0000' / in.		DATE -	REVISED -			CONTRACT NO. 74472					
PLOT DATE = 8/14/2015						ILLINOIS FED. AID PROJECT					
SCALE:						SHEET NO. 2 OF 4 SHEETS		STA.		TO STA.	

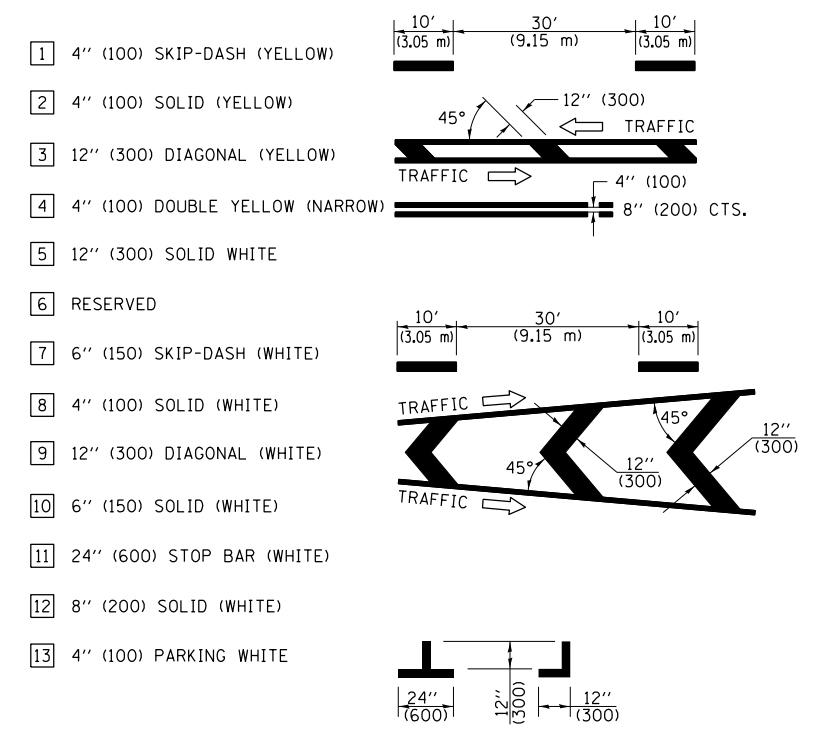


GENERAL NOTES

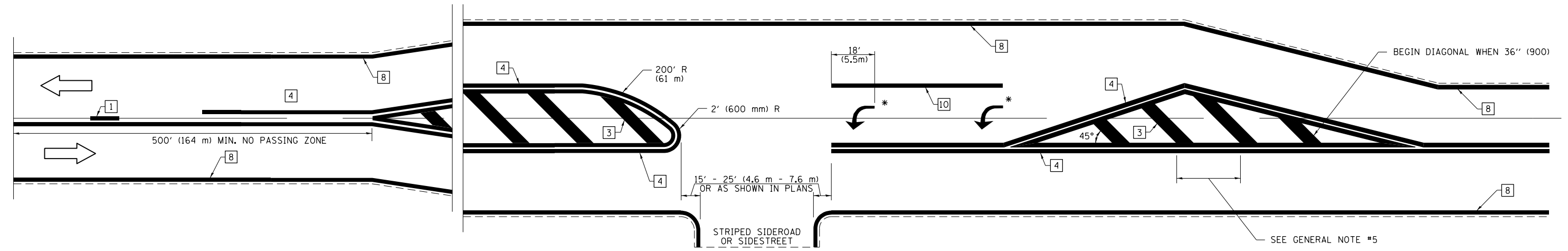
1. RAISED AND CORRUGATED MEDIANS SHALL BE OUTLINED WITH [2] IF PRESENT.
2. SOME OF THE INFORMATION INCLUDED WITH THIS DETAIL MAY NOT BE APPLICABLE TO THIS IMPROVEMENT.
3. PAVEMENT MARKINGS ARE TO BE EXTENDED THROUGH OMISSIONS WHEN APPLICABLE.
4. FINAL PAVEMENT MARKINGS SHALL BE IN PLACE PRIOR TO PLACING ANY RAISED REFLECTIVE PAVEMENT MARKERS.
5. THE FOLLOWING CRITERIA SHALL BE USED FOR SELECTING THE DIAGONAL PAVEMENT MARKING SPACING:

< 30 MPH (< 50 km/h)	15' (4.5 m)
30-45 MPH (50-75 km/h)	20' (6.0 m)
> 45 MPH (> 75 km/h)	30' (9.0 m)

PAVEMENT MARKING LEGEND



RURAL LEFT TURN STRIPING



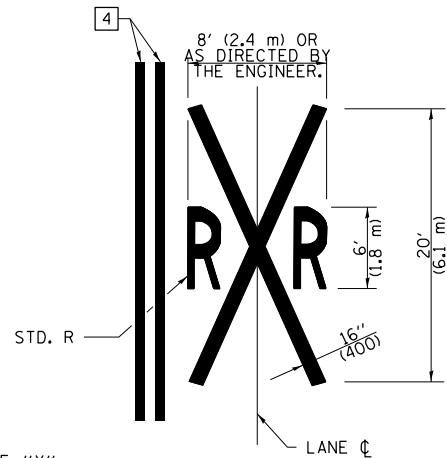
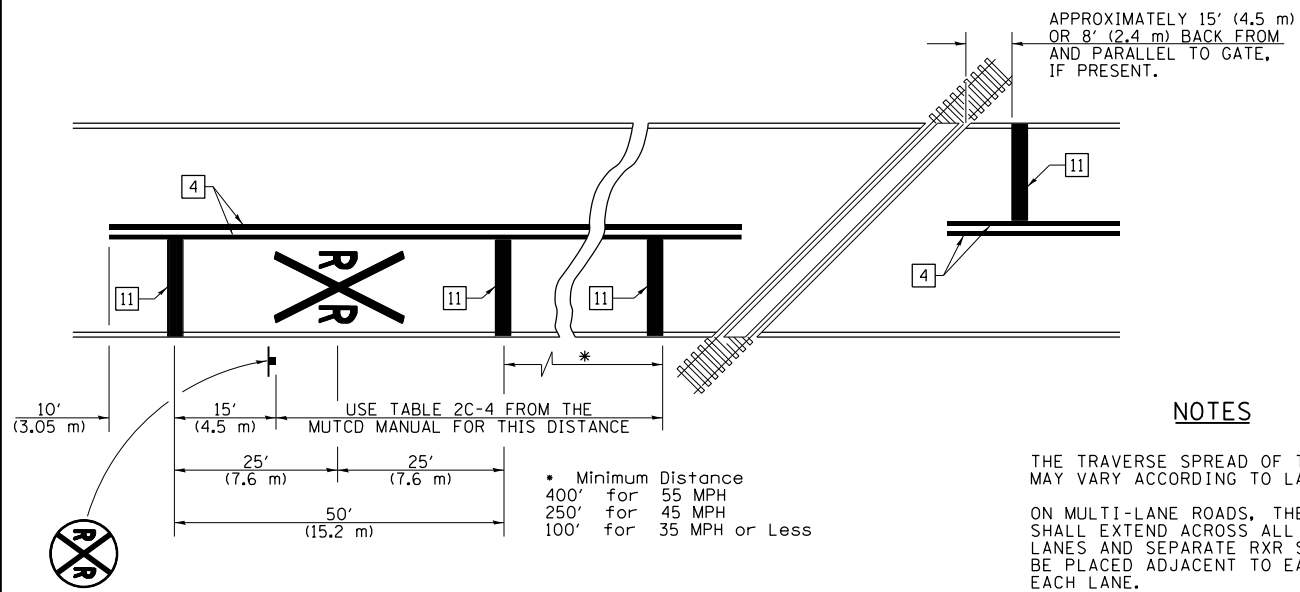
* PLACE AN ARROW 18' (5.5 m) BACK FROM STOP BAR. PLACE ANOTHER ARROW EVEN WITH THE BEGINNING OF THE SOLID WHITE LINE. SPACE ADDITIONAL ARROWS EVENLY UP TO 80' (24.4 m) MAXIMUM SPACING. USE MINIMUM OF 2 ARROWS.

NOT TO SCALE
 Note: All dimensions are in INCHES (millimeters) unless otherwise shown.

DISTRICT 7 DETAIL NO. 7800001

FILE NAME =	USER NAME = steffenmk	DESIGNED -	REVISED -	STATE OF ILLINOIS DEPARTMENT OF TRANSPORTATION	PAVEMENT MARKING AND RAISED REFLECTIVE PAVEMENT MARKERS (RURAL & URBAN APPLICATIONS)	F.A.P. RTE.	SECTION	COUNTY	TOTAL SHEETS	SHEET NO.
pw:\IL\084EBIDINTEG.illinois.gov\PIWIDOT\Documents\IDOT Offices\District 7\Projects\74472\Drawings\CABsheets\0774472-Details.dgn	2015	CHECKED -	REVISED -			322	(24,25)RS-3	Fayette	14	13
PLOT SCALE = 100.0000' / in.		DATE -	REVISED -			CONTRACT NO. 74472				
PLOT DATE = 8/14/2015						ILLINOIS FED. AID PROJECT				

PAVEMENT MARKINGS AT RAILROAD-HIGHWAY GRADE CROSSING



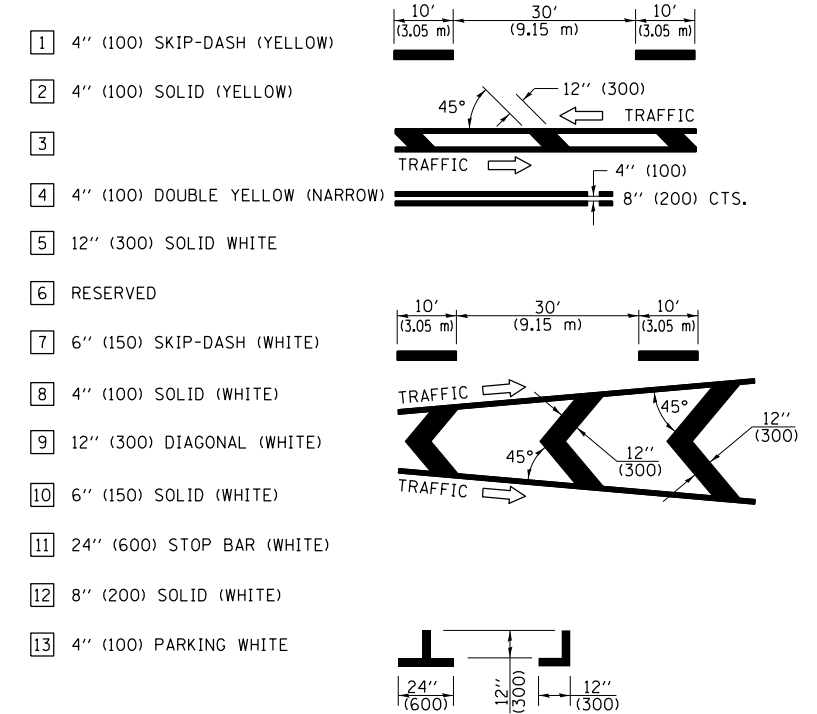
NOTES

THE TRAVERSE SPREAD OF THE "X" MAY VARY ACCORDING TO LANE WIDTH.

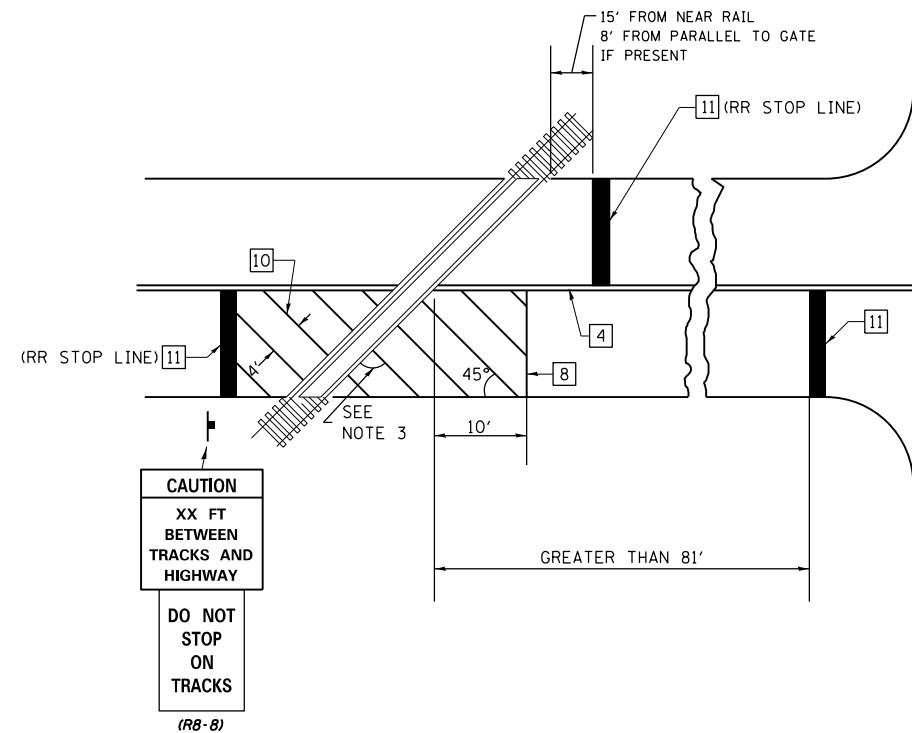
ON MULTI-LANE ROADS, THE STOP LINES SHALL EXTEND ACROSS ALL APPROACH LANES AND SEPARATE RXR SYMBOLS SHALL BE PLACED ADJACENT TO EACH OTHER IN EACH LANE.

WHEN THE PAVEMENT MARKING SYMBOL IS USED, A PORTION OF THE SYMBOL SHOULD BE LOCATED DIRECTLY ADJACENT TO THE ADVANCE WARNING SIGN (W10-1) AS PLACED BY TABLE II-1, CONDITION B OF THE MUTCD.

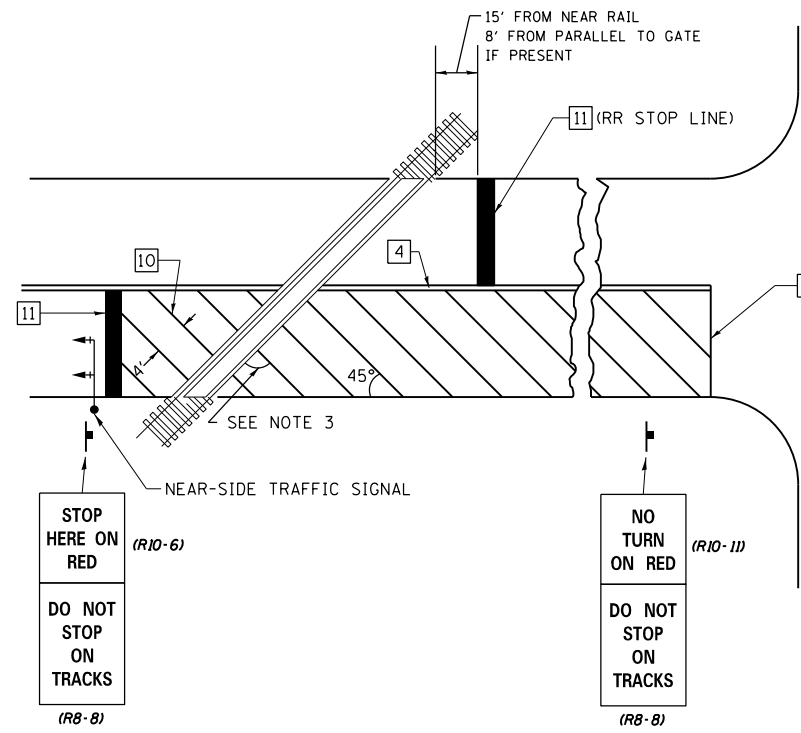
PAVEMENT MARKING LEGEND



RAILROAD CROSSING WITH INTERCONNECT ONLY



RAILROAD CROSSING WITH INTERCONNECT AND PRE-SIGNALS



GENERAL NOTES

1. SUPPLEMENTAL PAVEMENT MARKINGS TO BE INSTALLED ONLY ON APPROACHES TO INTERSECTIONS CONTROLLED BY TRAFFIC SIGNALS WHICH ARE INTERCONNECTED WITH THE RAILROAD WARNING SIGNALS.
2. EXTEND PAVEMENT MARKINGS TO THE INTERSECTION ONLY WHERE NEAR-SIDE TRAFFIC SIGNALS ARE USED.
3. WHERE THE ANGLE BETWEEN THE DIAGONAL PAVEMENT MARKINGS AND THE TRACK WOULD BE LESS THAN 20°, THE PAVEMENT MARKINGS SHOULD BE PLACED IN THE OPPOSITE DIRECTION FROM THAT SHOWN.

SUPPLEMENTAL PAVEMENT MARKING TREATMENT FOR RAILROAD-HIGHWAY GRADE CROSSING

NOT TO SCALE

Note: All dimensions are in INCHES (millimeters) unless otherwise shown.

DISTRICT 7 DETAIL NO. 7800001

FILE NAME =	USER NAME = steffenmk	DESIGNED -	REVISED -	STATE OF ILLINOIS DEPARTMENT OF TRANSPORTATION	PAVEMENT MARKING AND RAISED REFLECTIVE PAVEMENT MARKERS (RURAL & URBAN APPLICATIONS)	F.A.P. R.T.E.	SECTION	COUNTY	TOTAL SHEETS	SHEET NO.
pw:\11\084EBIDINTEG.illinois.gov\PIWIDOT\Documents\IDOT Offices\District 7\Projects\74472\Drawings\CABsheets\0774472-Details.dgn	2015	CHECKED -	REVISED -			322	(24,25)RS-3	Fayette	14	14
PLOT SCALE = 100.0000' / 1in.		DATE -	REVISED -			CONTRACT NO. 74472				
PLOT DATE = 8/14/2015						ILLINOIS FED. AID PROJECT				