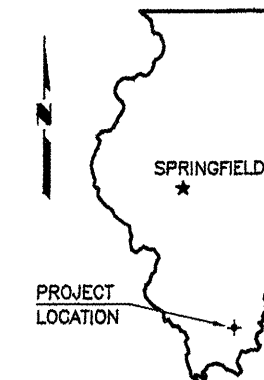




STATE OF ILLINOIS
DEPARTMENT OF TRANSPORTATION
DIVISION OF HIGHWAYS
PLANS FOR PROPOSED

ROUTE	SECTION	COUNTY	TOTAL SHEETS	SHEET NO.
FAS 898	05-00139-00-RS	SALINE	15	1
PROJECT NO. ARA-RS-898 (107)			CONTRACT NO. 99398	

AMERICAN RECOVERY AND REINVESTMENT ACT OF 2009



FAS ROUTE 898 (HARCO ROAD)
SECTION 05-00139-00-RS
PROJECT NO. ARA-RS-898 (107)
JOB NO. C-99-535-05

INDEX OF SHEETS

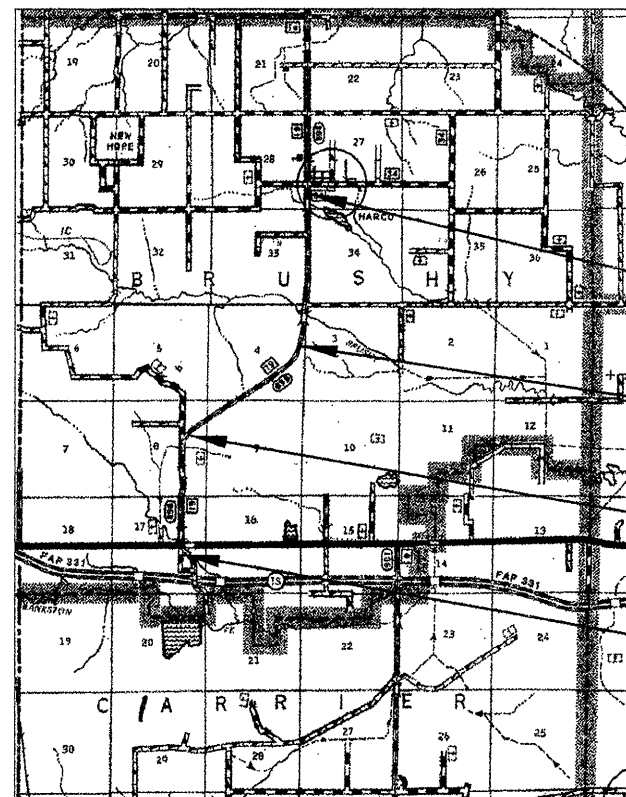
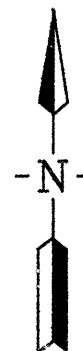
1. COVER SHEET
 2. TYPICAL SECTIONS
 3. SCHEDULES OF QUANTITIES
 - 4.-12. PLAN & PROFILE
 13. INTERSECTION DETAILS - HARCO ROAD & OLD ROUTE 13
 14. TYPICAL SIDE ROAD & ENTRANCE DETAILS
 15. MISCELLANEOUS DETAILS
- STANDARDS
- 701001-02 TRAFFIC CONTROL
 - 701006-03 TRAFFIC CONTROL
 - 701011-02 TRAFFIC CONTROL
 - 701301-03 TRAFFIC CONTROL
 - 701306-02 TRAFFIC CONTROL
 - 701311-03 TRAFFIC CONTROL
 - 701901-01 TRAFFIC CONTROL DEVICES
 - 720001-01 SIGN PANEL MOUNTING DETAILS
 - 720006-02 SIGN PANEL ERECTION DETAILS
 - 780001-02 TYPICAL PAVEMENT MARKINGS
 - 781001-03 RAISED REFLECTIVE PAVEMENT MARKERS
 - BLR 23-3 TRAFFIC BARRIER TERMINAL TYPE 1
 - BLR 24-2 MAILBOX TURNOUTS
- BLR 26-1**

SUMMARY OF QUANTITIES

CODE NO.	PAY ITEM	UNIT	TOTAL
40200800*	AGGREGATE SURFACE COURSE, TYPE B	TON	40
40600100	BITUMINOUS MATERIALS (PRIME COAT)	GALLON	2,290
40600300	AGGREGATE (PRIME COAT)	TON	34
40600635	LEVELING BINDER (MACHINE METHOD), N70	TON	3,760
40600982	HOT-MIX ASPHALT SURFACE REMOVAL - BUTT JOINT	SQ YD	147
40603315	HOT-MIX ASPHALT SURFACE COURSE, MIX "C", N70	TON	4,680
44000157	HOT-MIX ASPHALT SURFACE REMOVAL, 2"	SQ YD	1,145
44000198*	HOT-MIX ASPHALT SURFACE REMOVAL, VARIABLE DEPTH	SQ YD	864
48101200	AGGREGATE SHOULDERS, TYPE B	TON	2,550
△ 63301210	REMOVE AND RE-ERECT STEEL PLATE BEAM GUARD RAIL, TYPE A	FOOT	2,180
△ 63301995	REMOVE AND RE-ERECT TRAFFIC BARRIER TERMINAL, TYPE 1A	EACH	16
67100100	MOBILIZATION	L SUM	1
70300100	SHORT-TERM PAVEMENT MARKING	FOOT	4,490
70300220	TEMPORARY PAVEMENT MARKING - LINE 4"	FOOT	67,480
72000100	SIGN PANEL - TYPE 1	SQ FT	96
72800100	TELESCOPING STEEL SIGN SUPPORT	FOOT	273
△ 78001110	PAINT PAVEMENT MARKING - LINE 4"	FOOT	67,480
△ 78100100	RAISED REFLECTIVE PAVEMENT MARKER	EACH	286
△ 78100105	RAISED REFLECTIVE PAVEMENT MARKER (BRIDGE)	EACH	4

* SEE SPECIAL PROVISIONS
△ SPECIALTY ITEM*

SALINE COUNTY



END IMPROVEMENT
STATION 174+00

EQ. STA. 152+00.00 BK.
= STA. 252+32.80 AH.

EQ. STA. 64+23.43 BK.
= STA. 64+34.68 AH.

BEGIN IMPROVEMENT
STATION -1+40

LOCATION MAP

SCALE: 1" = 2 MILES

NET LENGTH OF IMPROVEMENT = 23,161.55 FT. = 4.3867 MILES

CLASSIFICATION : MAJOR COLLECTOR
ADT : 1700
DESIGN SPEED : 50 MPH



06/29/09

Edward W. Miller

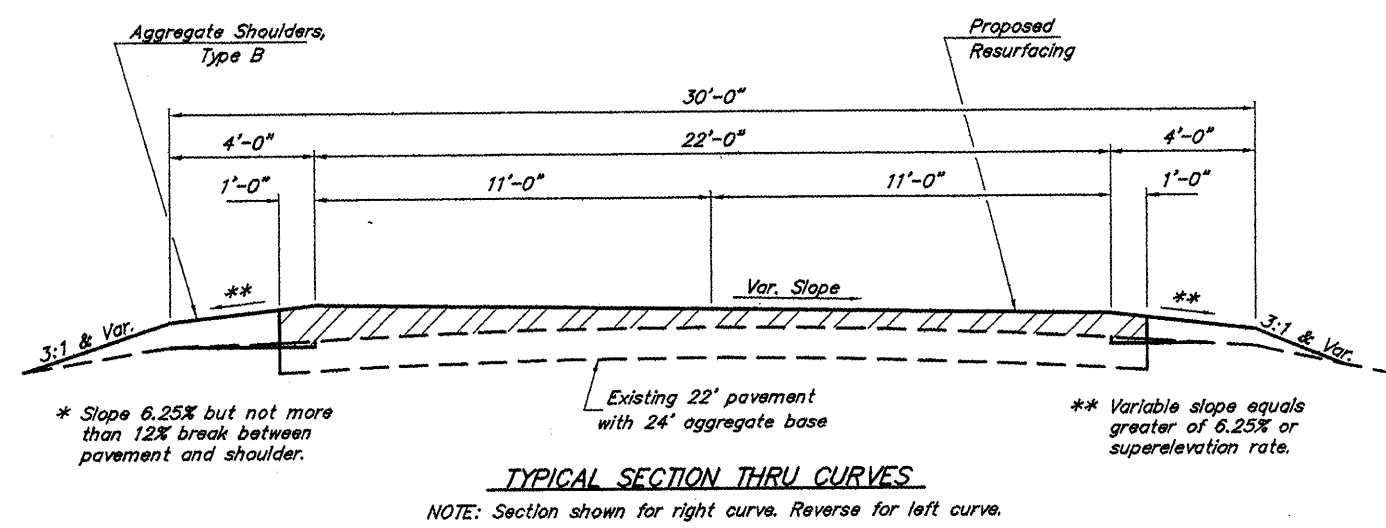
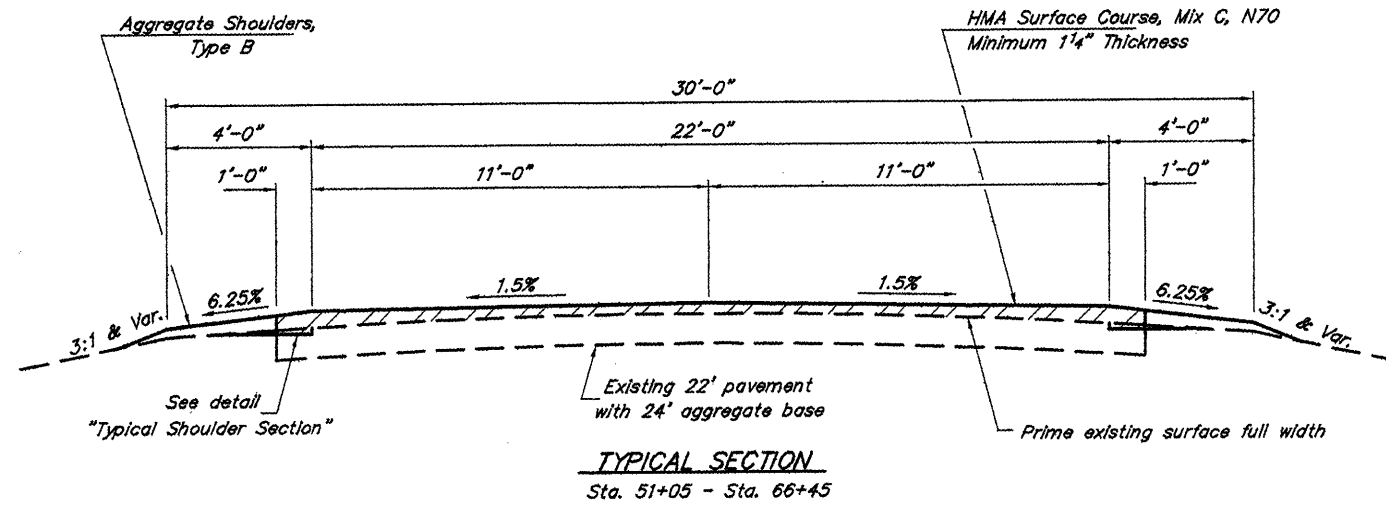
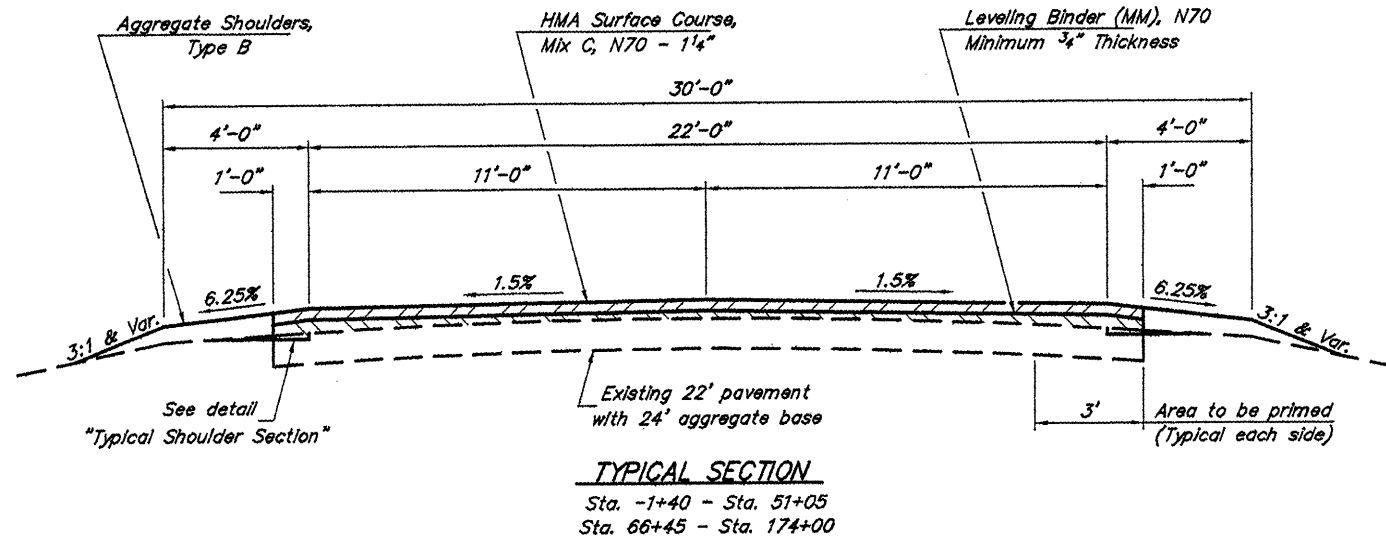
Edward W. Miller
PROFESSIONAL ENGINEER
#082-025277
EXPIRES NOV. 30, 2009

CONTRACT NO. 99398

E. MILLER ENGINEERING, INC.
CONSULTING ENGINEERS
HARRISBURG, ILLINOIS

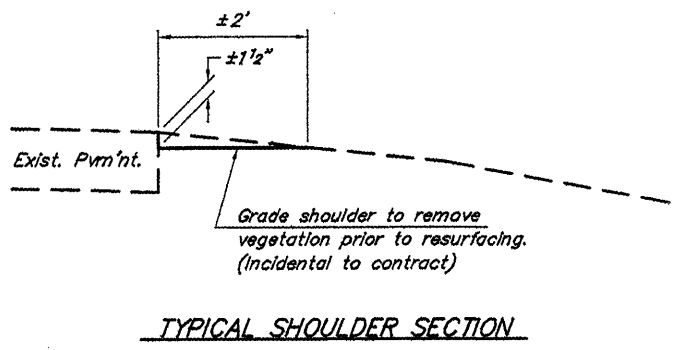
ILLINOIS DEPARTMENT OF TRANSPORTATION	
Approved	07-02-09 <i>[Signature]</i> Saline County, Engineer
Passed	8-29-2009 <i>Richard W. Meleker</i> District 9 Engineer of Local Roads and Streets
Releasing for Bid Based on Limited Review	8-31-09 <i>Mary C. Lamie</i> Deputy Director of Highways, Region 5 Engineer

ROUTE	SECTION	COUNTY	TOTAL SHEETS	SHEET NO.
FAS 898	05-00139-00-RS	SALINE	15	2
PROJECT NO. ARA-RS-898 (107)			CONTRACT NO. 99398	



GENERAL NOTES

The existing surface shall be primed as shown on the typical section.
Milled areas shall be primed full width.
Prime shall be applied at the rates shown below.
Factors used for quantity calculations are as follows:
Hot-Mix Asphalt 112.0 Lbs./Sq. Yd./Inch
Aggregate 2.025 Tons/Cu. Yd.
Bit. Matis. (Prime Coat) 0.10 Gals./Sq. Yd.
Aggregate (Prime Coat) 3.0 Lbs./Sq. Yd.



STRUCTURAL DESIGN DATA

STA. -2+00 - STA. 65+00
Class III Roadway
Design Period - 20 Years
PC 1580 IBR 3.8
SU 70 TF 0.2709
MU 50 DT 3.199

STA. 65+00 - STA. 174+00
Class III Roadway
Design Period - 20 Years
PC 1490 IBR 3.8
SU 60 TF 0.2598
MU 50 DT 3.181

MATERIAL COEFFICIENT

Exist. Crushed Stone Base - 0.11
Exist. Oil & Chip Surface - 0.15
Existing Class I Surface - 0.23
Leveling Binder (MM) - 0.33
HMA Surface Course - 0.40

HOT-MIX ASPHALT MIXTURE REQUIREMENTS

Mixture Use:	Leveling Binder (Machine Method), N70
PG:	PG64-22
RAP% (Max):	10
Design Air Voids:	4% 70 Gyration Superpave Design
Mixture Composition: (Gradation Mixture)	IL-9.5mm
Friction Aggregate:	None
Mixture Use:	HMA Surface Course, Mix "C", N70
PG:	PG64-22
RAP% (Max):	10
Design Air Voids:	4% 70 Gyration Superpave Design
Mixture Composition: (Gradation Mixture)	IL-9.5mm or IL-12.5mm
Friction Aggregate:	C Surface

ROUTE	SECTION	COUNTY	TOTAL SHEETS	SHEET NO.
FAS 898	05-00139-00-RS	SALINE	15	3
PROJECT NO. ARA-RS-898 (107)			CONTRACT NO. 99398	

RESURFACING SCHEDULE						
Location Station to Station	Length Feet	Prime Coat		Leveling Binder (MM)		Hot-Mix Asphalt Surface Course Tons
		Bituminous Materials Gallons	Aggregate Tons	Full Lift Tons	Crown/SE Correction Tons	
		NORTHBOUND (RIGHT) LANE				
-1+40 to 1+32.25	272.25	17.6	0.3	15.7	1.2	26.2
1+32.25 to 1+75.75	43.50	7.0	0.1			7.8
1+75.75 to 41+45.56	3969.81	144.5	2.1	229.0	92.9	381.8
41+45.56 to 43+54.44	208.88	33.5	0.5			37.4
43+54.44 to 53+27	972.56	60.3	0.9	54.2		94.5
53+27 to 65+79	1252.00	171.9	2.6			126.2
65+79 to 124+57	5878.00	208.6	3.2	339.0	244.3	565.5
124+57 to 132+16	759.00	26.1	0.3	43.8	20.2	73.0
132+16 to 142+23	1007.00	34.6	0.6	58.1	39.1	96.9
142+23 to 152+00	977.00	33.5	0.5	56.4	33.9	93.9
152+00 to -252+32.80				Station Equation (Begin reverse stationing)		
-252+32.80 to -248+19	413.80	14.2	0.3	23.9	16.8	39.8
-248+19 to -242+82.33	536.67	22.6	0.3	31.0	4.7	51.7
-242+82.33 to -241+65.67	116.66	18.6	0.3			20.9
-241+65.67 to -210+00	3165.67	112.8	1.7	182.6	119.2	304.4
-210+00 to -174+00	3600.00	127.7	1.9	207.6	92.9	346.3
Subtotals for NorthBound (Right) Lane		1033.5	15.6	1241.3	665.2	2266.3
SOUTHBOUND (LEFT) LANE						
-1+40 to 1+32.25	272.25	17.6	0.3	15.7	1.2	26.2
1+32.25 to 1+75.75	43.50	7.0	0.1			7.8
1+75.75 to 41+45.56	3969.81	144.5	2.1	229.0	50.2	381.8
41+45.56 to 43+54.44	208.88	33.5	0.5			37.4
43+54.44 to 53+27	972.56	60.3	0.9	56.1	8.2	94.5
53+27 to 65+79	1252.00	171.9	2.6			126.2
65+79 to 124+57	5878.00	208.6	3.2	339.0	164.4	565.5
124+57 to 132+16	759.00	26.1	0.3	43.8	10.8	73.0
132+16 to 142+23	1007.00	34.6	0.6	58.1	16.0	96.9
142+23 to 152+00	977.00	33.5	0.5	56.4	21.7	93.9
152+00 to -252+32.80				Station Equation (Begin reverse stationing)		
-252+32.80 to -248+19	413.80	14.2	0.3	23.9	7.0	39.8
-248+19 to -242+82.33	536.67	22.6	0.3	31.0	12.9	51.7
-242+82.33 to -241+65.67	116.66	18.6	0.3			20.9
-241+65.67 to -210+00	3165.67	112.8	1.7	182.6	102.6	304.4
-210+00 to -174+00	3600.00	127.7	1.9	207.6	136.7	346.3
Subtotals for SouthBound (Left) Lane		1033.5	15.6	1243.2	531.7	2266.3
TOTALS		2067.0	31.2	2484.5	1196.9	4532.6

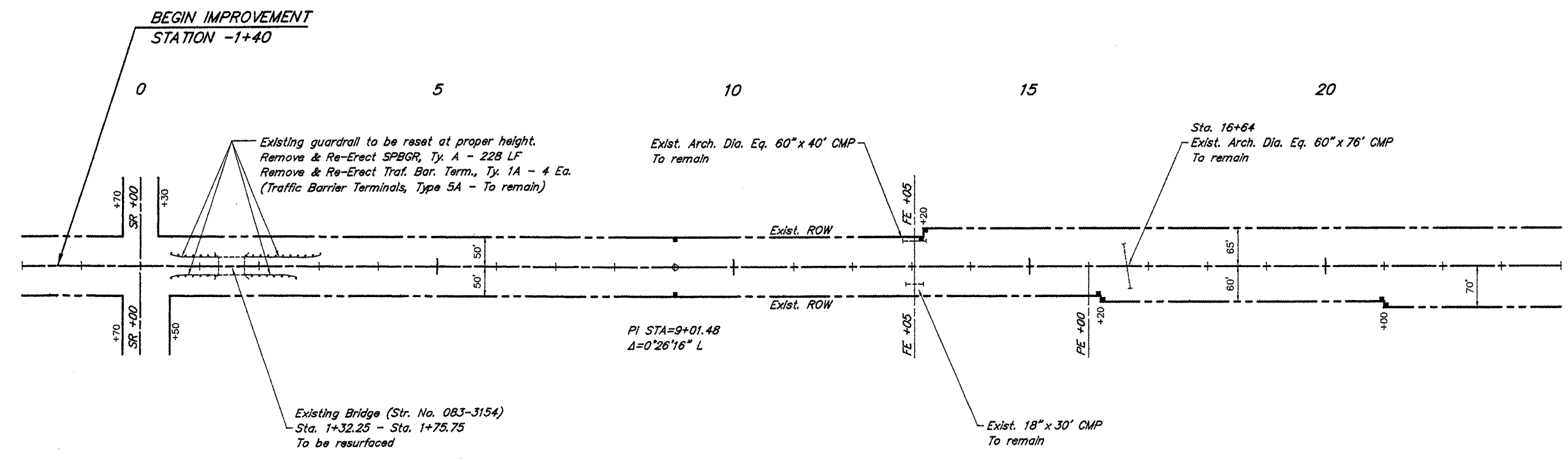
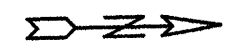
NOTE: Quantities shown do not include materials for entrances, side roads, and mailbox turnouts.

HMA SURFACE REMOVAL 2"	
Bridge Location	Area (S.Y.)
Sta. 1+32 to Sta. 1+76	137
Sta. 41+46 to Sta. 43+54	647
Sta. 241+66 to Sta. 242+82	361
TOTAL	1,145

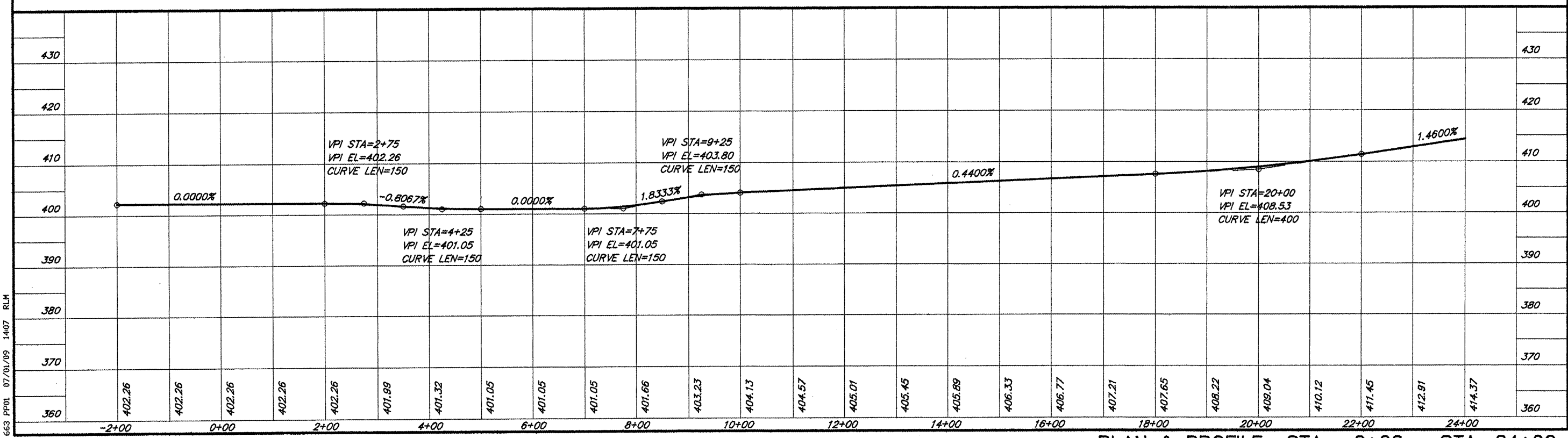
HMA SURF. REMOVAL - VAR. DEPTH	
Location	Area (S.Y.)
Sta. -0+50 to Sta. 0+50	864
TOTAL	864

HMA SURF. REMOVAL - BUTT JT.	
Location	Area (S.Y.)
Sta. -1+40 to Sta. -1+15	86
Sta. 174+00 to Sta. 173+75	61
TOTAL	147

ROUTE	SECTION	COUNTY	TOTAL SHEETS	SHEET NO.
FAS 898	05-00139-00-RS	SALINE	15	4
PROJECT NO. ARA-RS-898 (107)			CONTRACT NO. 99398	



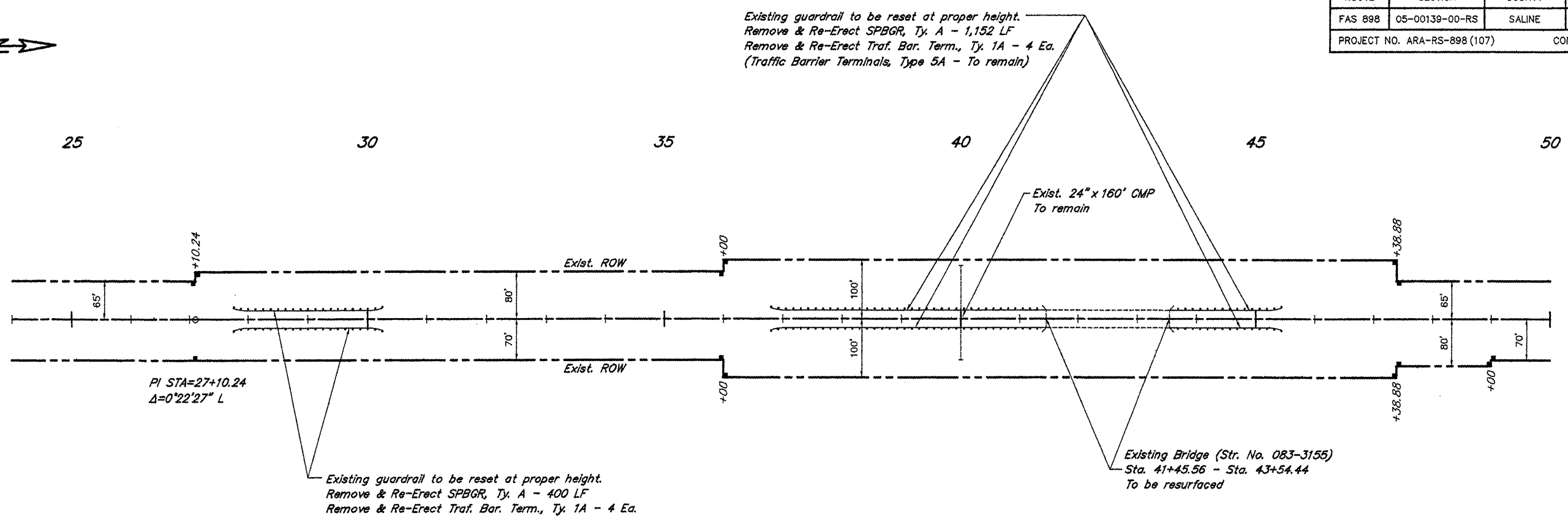
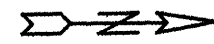
SCALES:
 1" = 200' HOR
 1" = 20' VER



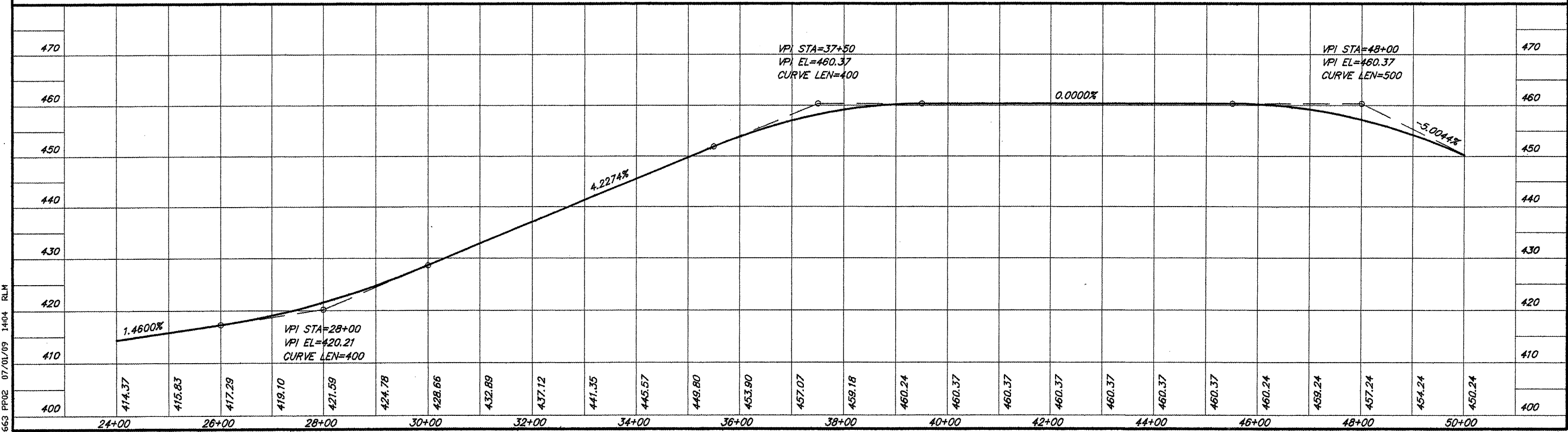
PLAN & PROFILE STA. -2+00 - STA. 24+00

653 PPO1 07/01/09 1407 RLM

ROUTE	SECTION	COUNTY	TOTAL SHEETS	SHEET NO.
FAS 898	05-00139-00-RS	SALINE	15	5
PROJECT NO. ARA-RS-898 (107)			CONTRACT NO. 99398	



SCALES:
 1" = 200' HOR
 1" = 20' VER

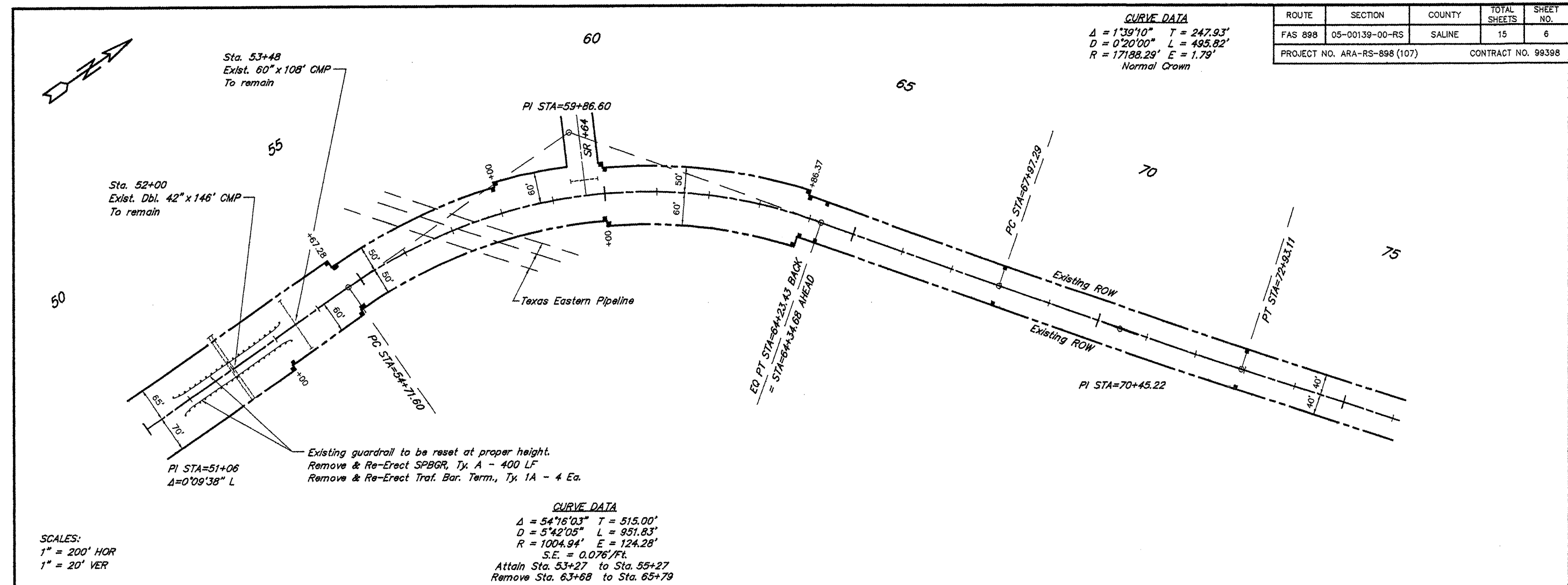


PLAN & PROFILE STA. 24+00 - STA. 50+00

663 PPO2 07/01/09 1404 RLM

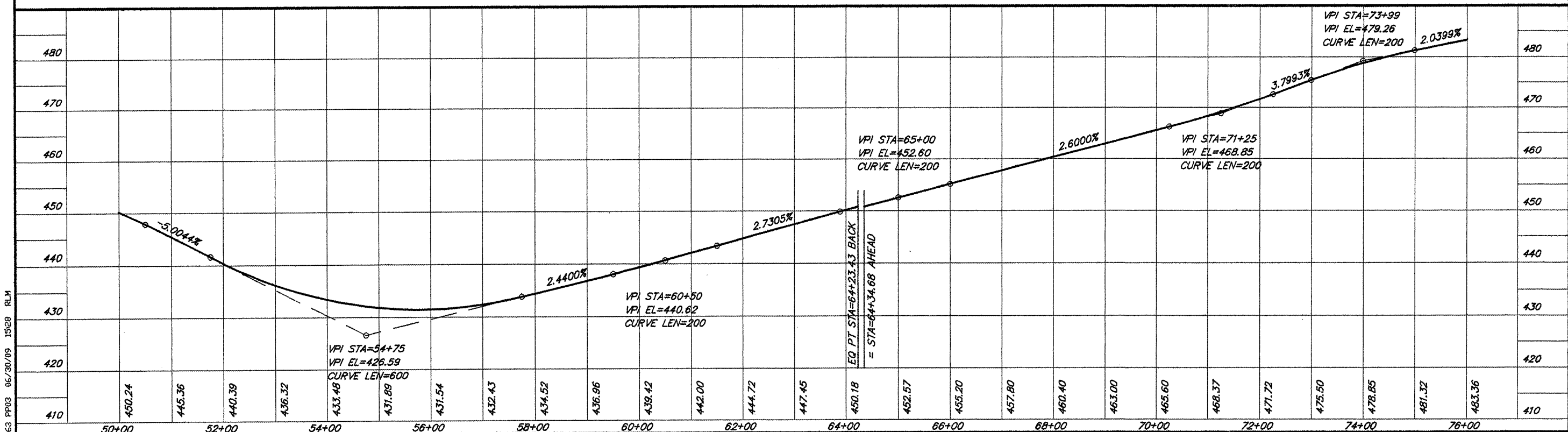
ROUTE	SECTION	COUNTY	TOTAL SHEETS	SHEET NO.
FAS 898	05-00139-00-RS	SALINE	15	6
PROJECT NO. ARA-RS-898 (107)			CONTRACT NO. 99398	

CURVE DATA
 $\Delta = 1^{\circ}39'10''$ $T = 247.93'$
 $D = 0^{\circ}20'00''$ $L = 495.82'$
 $R = 17188.29'$ $E = 1.79'$
 Normal Crown



CURVE DATA
 $\Delta = 54^{\circ}16'03''$ $T = 515.00'$
 $D = 5^{\circ}42'05''$ $L = 951.83'$
 $R = 1004.94'$ $E = 124.28'$
 $S.E. = 0.076'/ft.$
 Attain Sta. 53+27 to Sta. 55+27
 Remove Sta. 63+68 to Sta. 65+79

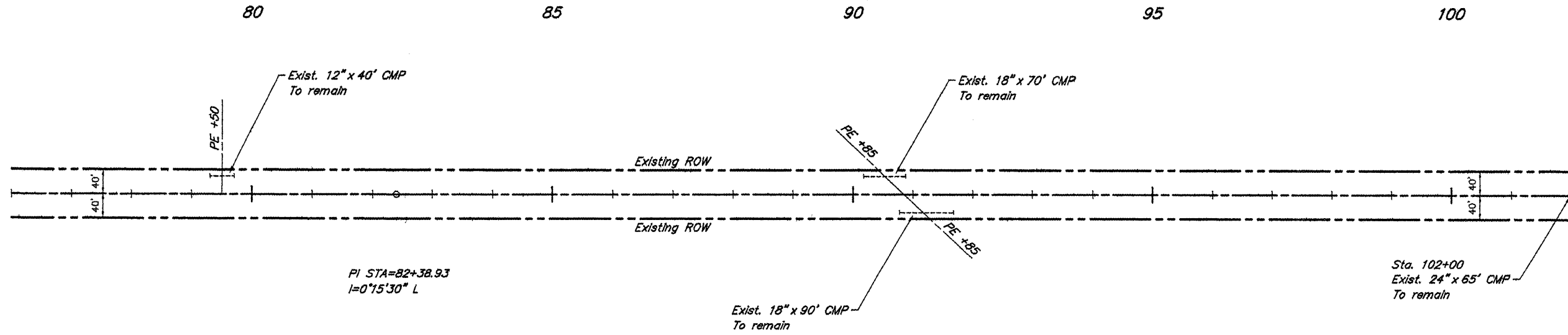
SCALES:
 1" = 200' HOR
 1" = 20' VER



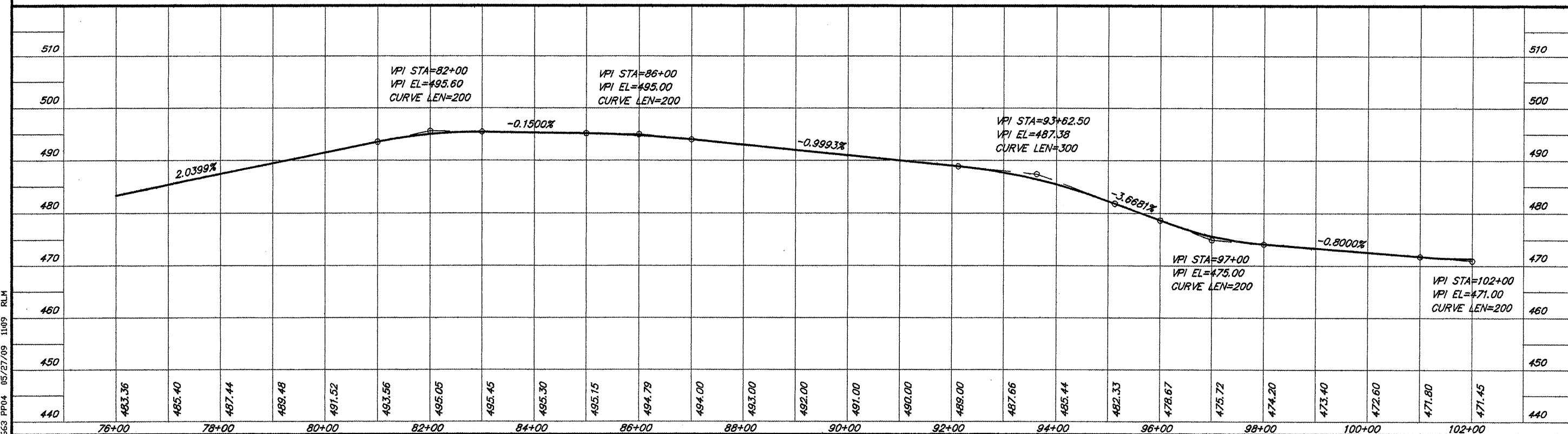
PLAN & PROFILE STA. 50+00 - STA. 76+00

663 PPO3 06/30/09 15228 RLM

ROUTE	SECTION	COUNTY	TOTAL SHEETS	SHEET NO.
FAS 898	05-00139-00-RS	SALINE	15	7
PROJECT NO. ARA-RS-898 (107)			CONTRACT NO. 99398	



SCALES:
 1" = 200' HOR
 1" = 20' VER

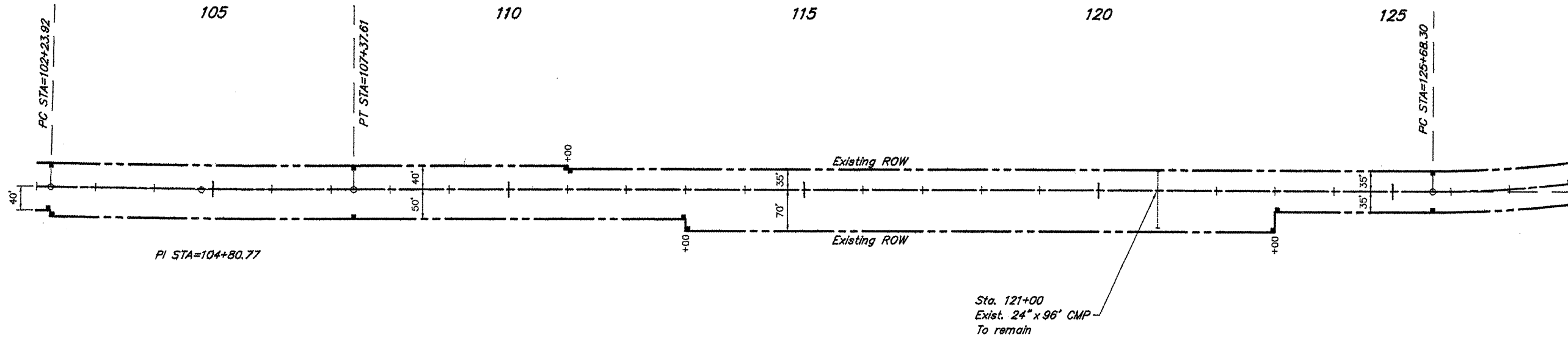
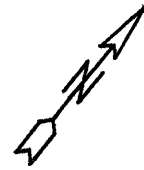


PLAN & PROFILE STA. 76+00 - STA. 102+00

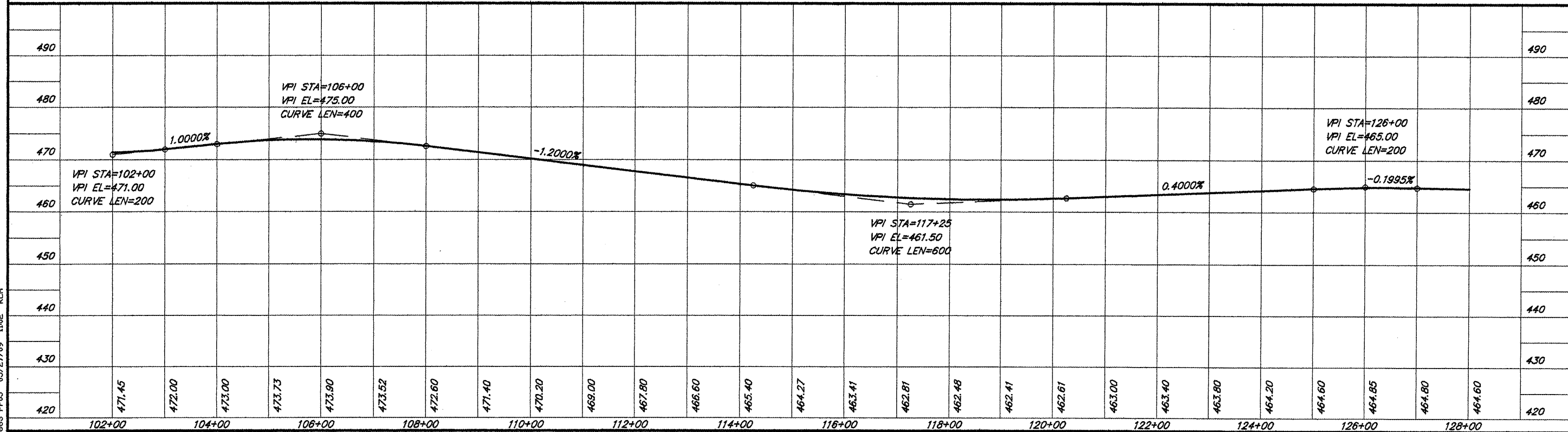
663 PPO4 05/27/09 11:09 RLM

ROUTE	SECTION	COUNTY	TOTAL SHEETS	SHEET NO.
FAS 898	05-00139-00-RS	SALINE	15	8
PROJECT NO. ARA-RS-898 (107)			CONTRACT NO. 99398	

CURVE DATA
 $\Delta = 1^{\circ}11'55''$ $T = 256.85'$
 $D = 0^{\circ}14'00''$ $L = 513.69'$
 $R = 24554.17'$ $E = 1.34'$
 Normal Crown



SCALES:
 1" = 200' HOR
 1" = 20' VER



663 PPO5 05/27/09 1102 RLM

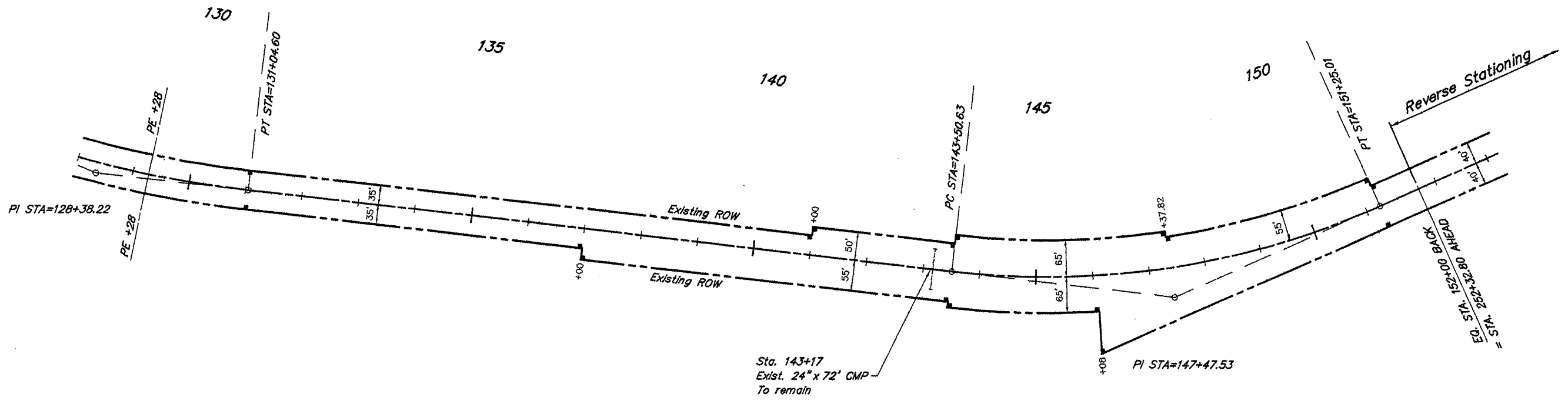
PLAN & PROFILE STA. 102+00 - STA. 128+00



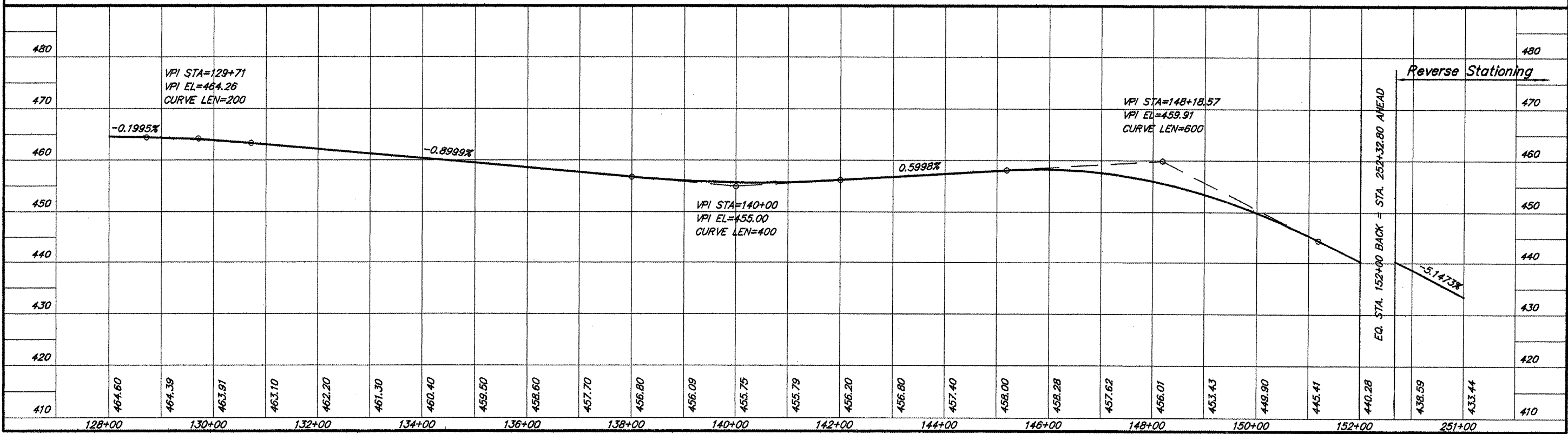
CURVE DATA
 $\Delta = 16^{\circ}05'20''$ $T = 269.92'$
 $D = 3^{\circ}00'00''$ $L = 536.30'$
 $R = 1909.86'$ $E = 18.98'$
 $S.E. = 0.053'/ft.$
 Attain Sta. 124+57 to Sta. 126+07
 Remove Sta. 130+66 to Sta. 132+16

CURVE DATA
 $\Delta = 30^{\circ}58'30''$ $T = 396.90'$
 $D = 4^{\circ}00'00''$ $L = 774.38'$
 $R = 1432.40'$ $E = 53.97'$
 $S.E. = 0.064'/ft.$
 Attain Sta. 142+23 to Sta. 143+97
 Remove Sta. 150+78 to Sta. -251+81

ROUTE	SECTION	COUNTY	TOTAL SHEETS	SHEET NO.
FAS 898	05-00139-00-RS	SALINE	15	9
PROJECT NO. ARA-RS-898 (107)			CONTRACT NO. 99398	



SCALES:
 1" = 200' HOR
 1" = 20' VER

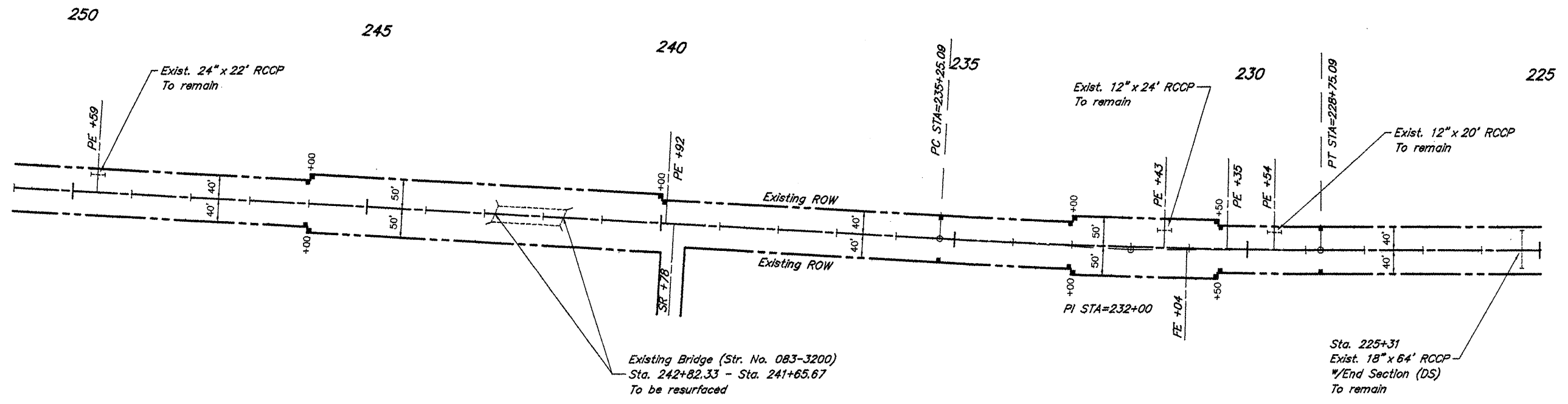
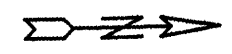


PLAN & PROFILE STA. 128+00 - STA. 251+00

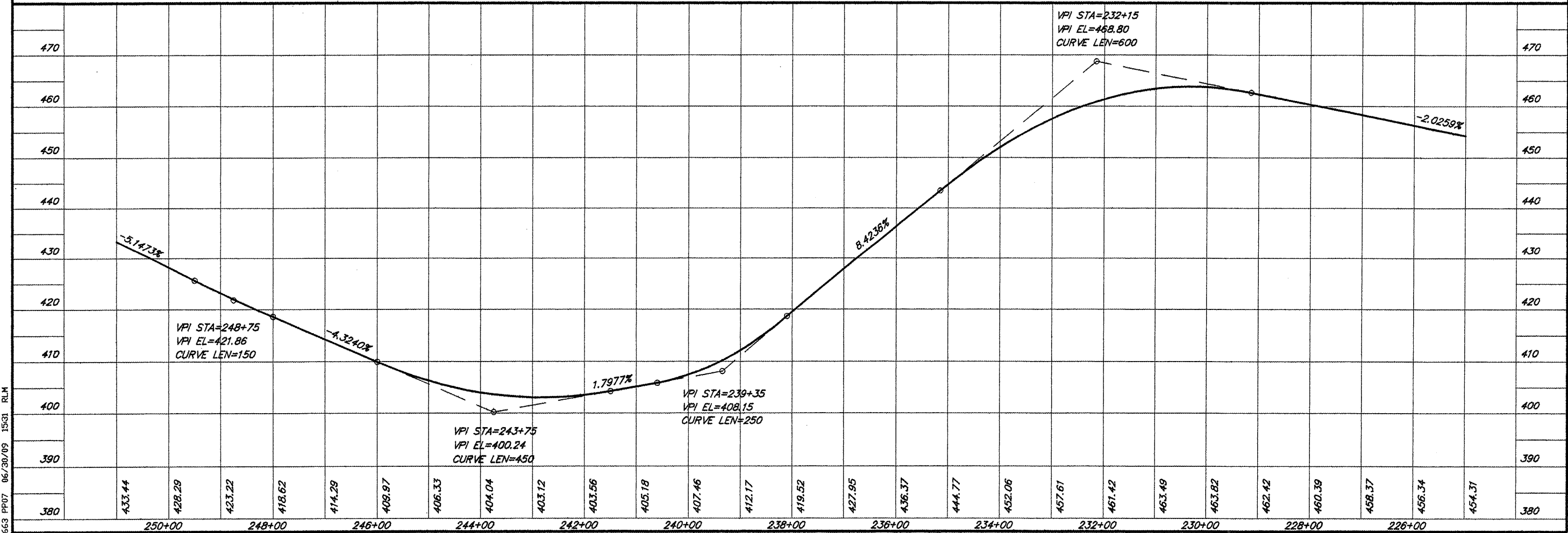
663 PPO6 05/27/09 10:58 RLM

ROUTE	SECTION	COUNTY	TOTAL SHEETS	SHEET NO.
FAS 898	05-00139-00-RS	SALINE	15	10
PROJECT NO. ARA-RS-898 (107)			CONTRACT NO. 99398	

CURVE DATA
 $\Delta = 3^{\circ}15'00''$ $T = 325.09'$
 $D = 0^{\circ}30'00''$ $L = 650.00'$
 $R = 11459.20'$ $E = 4.61'$
 Normal Crown



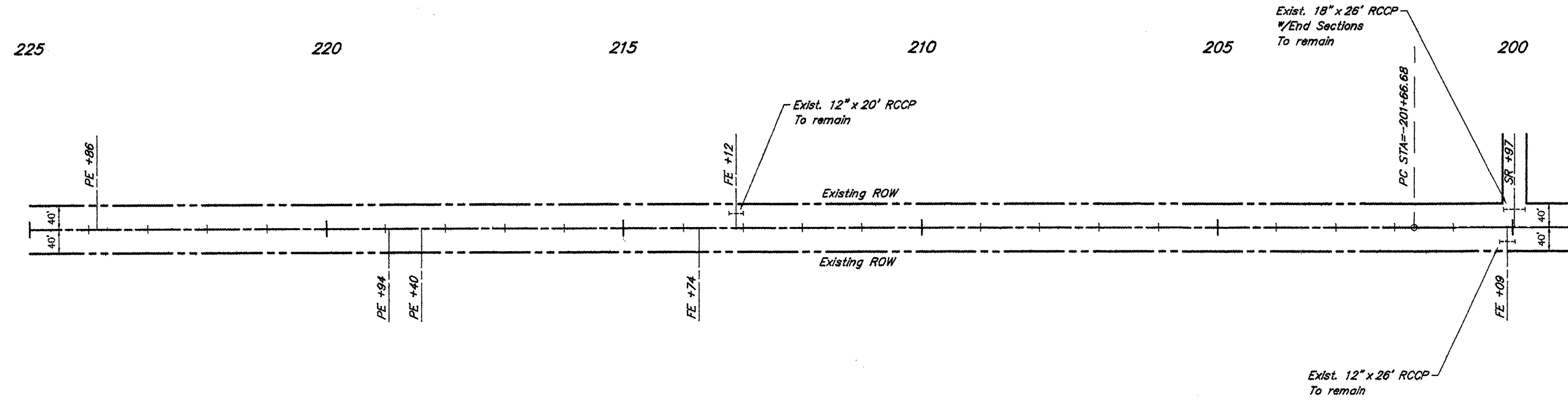
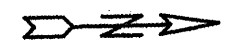
SCALES:
 1" = 200' HOR
 1" = 20' VER



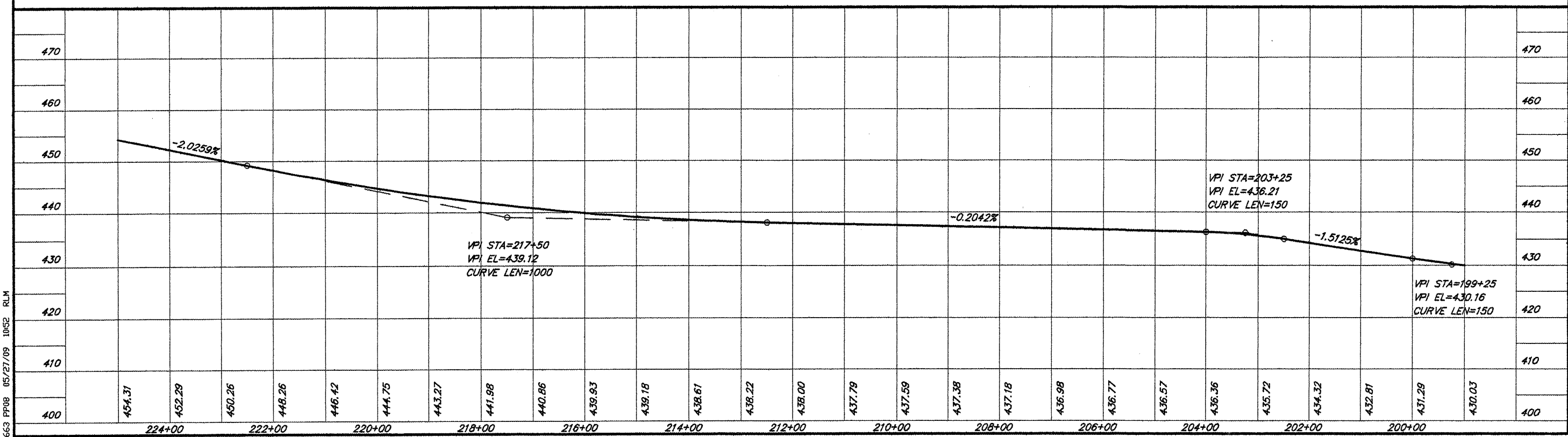
PLAN & PROFILE STA. 251+00 - STA. 225+00

663 PP07 06/30/09 15031 RLM

ROUTE	SECTION	COUNTY	TOTAL SHEETS	SHEET NO.
FAS 898	05-00139-00-RS	SALINE	15	11
PROJECT NO. ARA-RS-898 (107)			CONTRACT NO. 99398	



SCALES:
 1" = 200' HOR
 1" = 20' VER

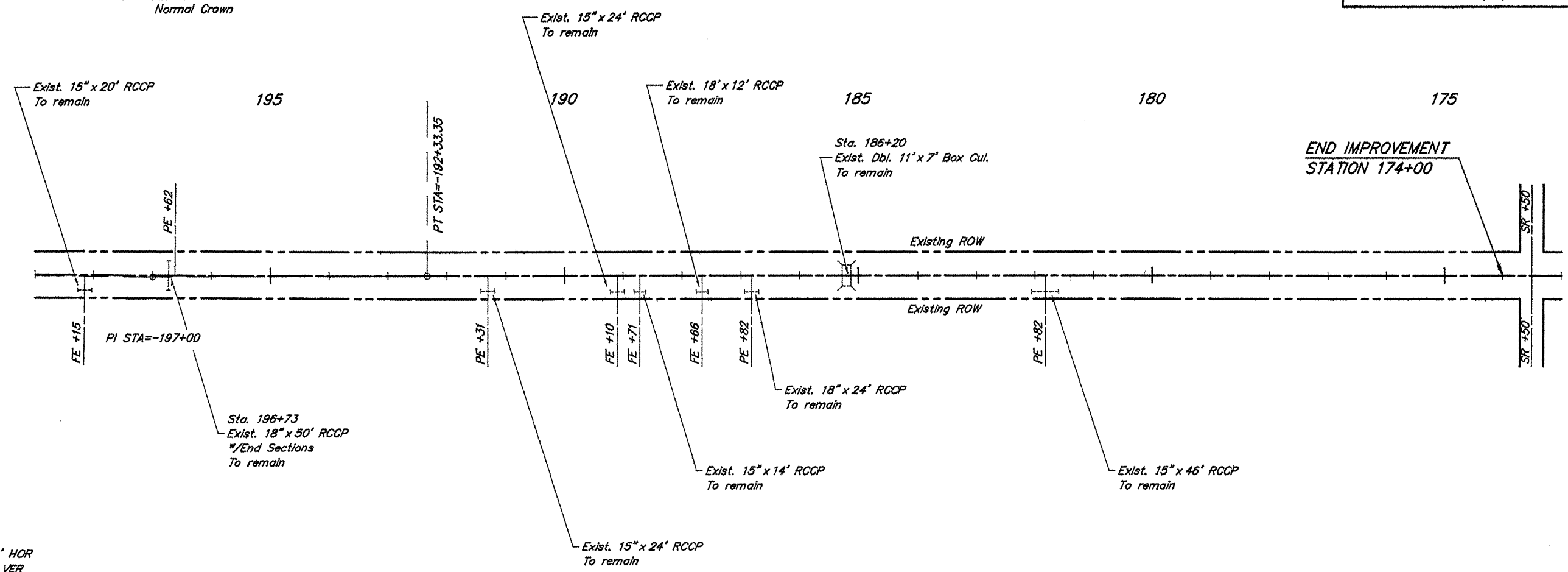
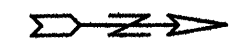


PLAN & PROFILE STA. 225+00 - STA. 199+00

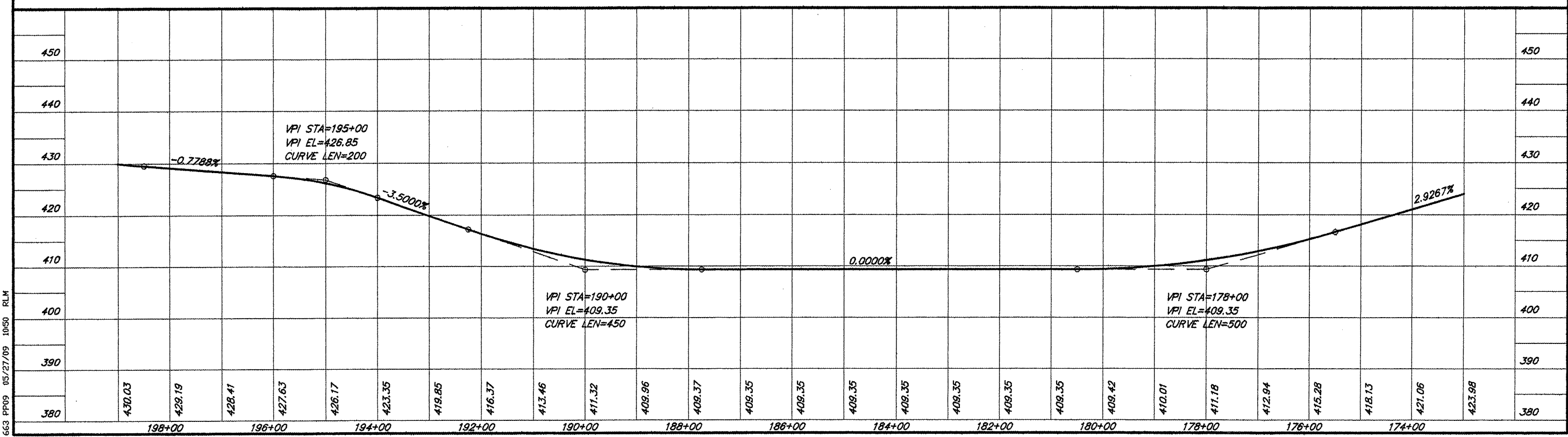
663 PP08 05/27/09 10:52 RLM

ROUTE	SECTION	COUNTY	TOTAL SHEETS	SHEET NO.
FAS 898	05-00139-00-RS	SALINE	15	12
PROJECT NO. ARA-RS-898 (107)			CONTRACT NO. 99398	

CURVE DATA
 $\Delta = 0^{\circ}56'00''$ $T = 466.68'$
 $D = 0^{\circ}06'00''$ $L = 933.33'$
 $R = 57295.80'$ $E = 1.90'$
 Normal Crown



SCALES:
 1" = 200' HOR
 1" = 20' VER

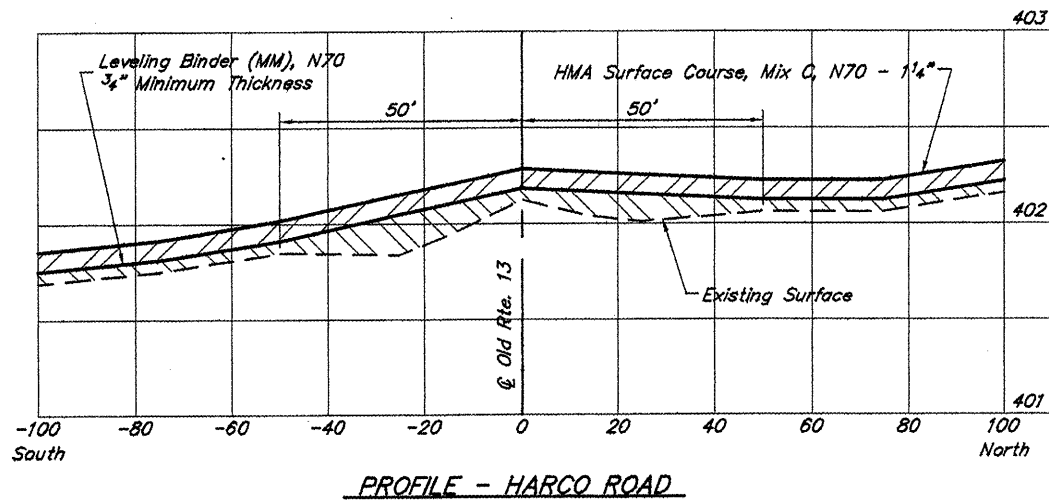
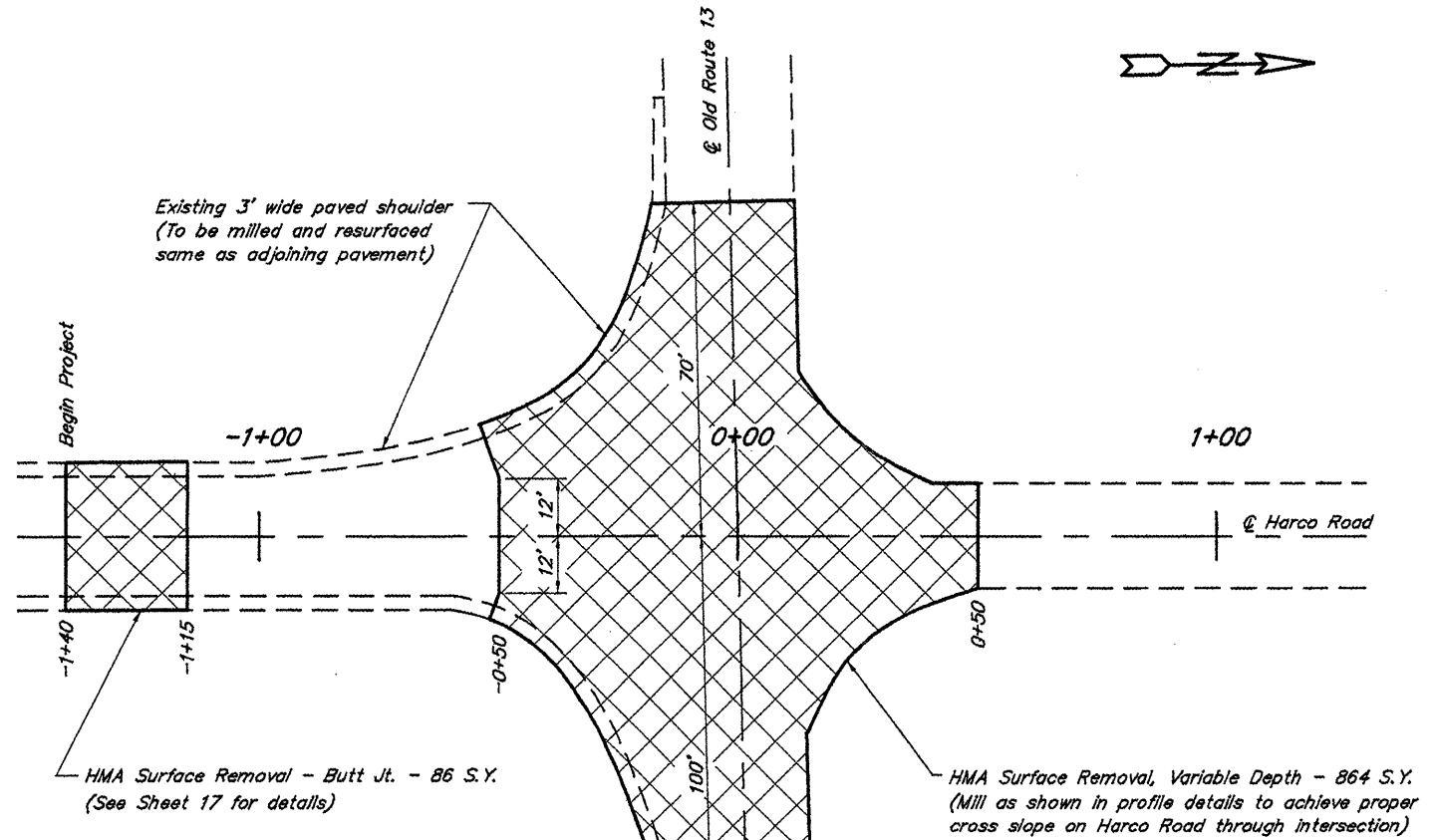
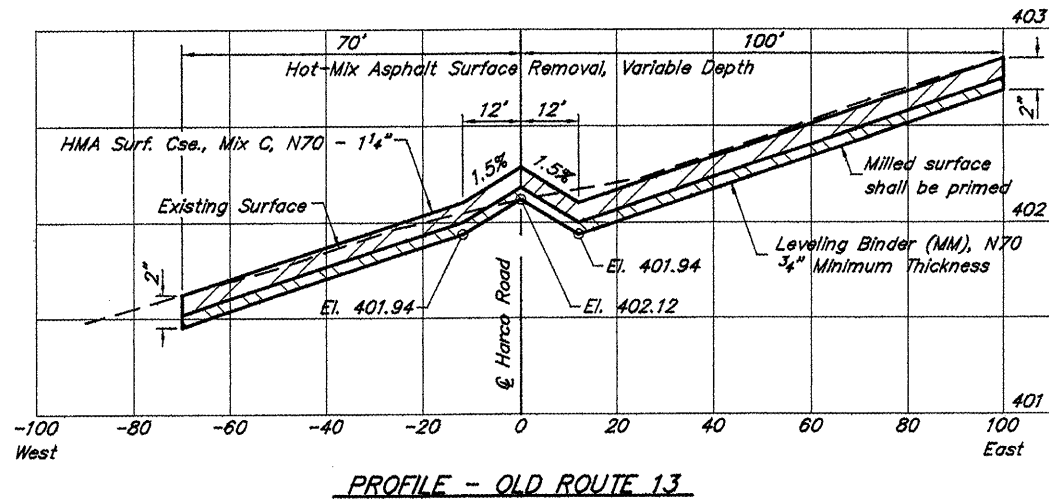


PLAN & PROFILE STA. 199+00 - STA. 173+00

653 PP09 05/27/09 10:50 RLM

ROUTE	SECTION	COUNTY	TOTAL SHEETS	SHEET NO.
FAS 898	05-00139-00-RS	SALINE	15	13
PROJECT NO. ARA-RS-898 (107)			CONTRACT NO. 99398	

BM - Square painted on wingwall
 14' Lt. Sta. 1+32
 El. 402.50



INTERSECTION DETAILS - HARCO ROAD & OLD ROUTE 13

ROUTE	SECTION	COUNTY	TOTAL SHEETS	SHEET NO.
FAS 898	05-00139-00-RS	SALINE	15	14
PROJECT NO. ARA-RS-898 (107)		CONTRACT NO. 99398		

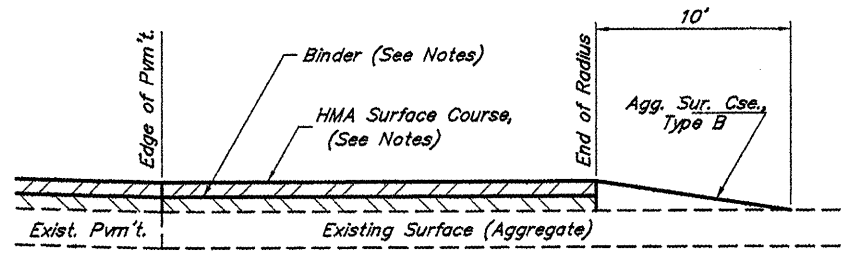
Angle of Intersection	Side Road		Private Entrance	
	Acute L.	Obtuse L.	Acute L.	Obtuse L.
90° - 80°	25'	25'	15'	15'
79° - 70°	25'	40'	15'	25'
69° - 60°	25'	60'	15'	35'
59° - 50°	20'	75'	10'	40'
49° - 40°	20'	100'	10'	60'
39° - 30°	15'	150'	10'	100'

NOTES

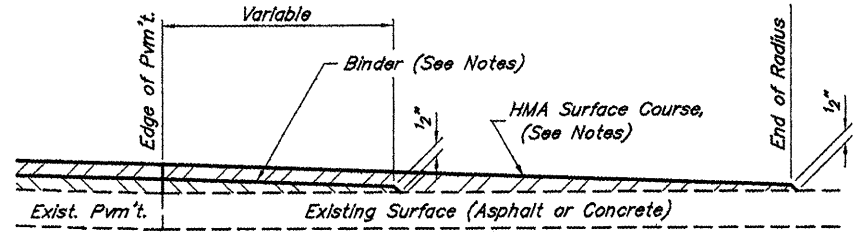
Thickness and type, of binder and surface course, shall be equal to the mainline resurfacing.

Where asphalt is to be placed, the existing surface shall be primed as follows.
 Bituminous Mat'ls (Pr. Ct.).....0.10 gal./s.y.
 Aggregate (Prime Coat)..... 3 lbs./s.y.

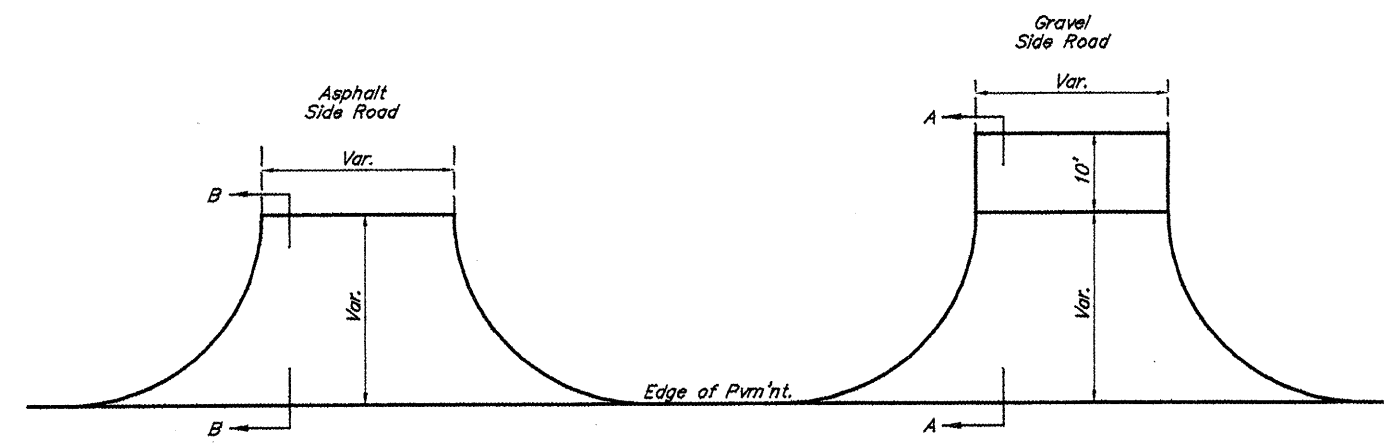
The actual number and locations, of entrances and side roads, shall be determined in the field by the Engineer.



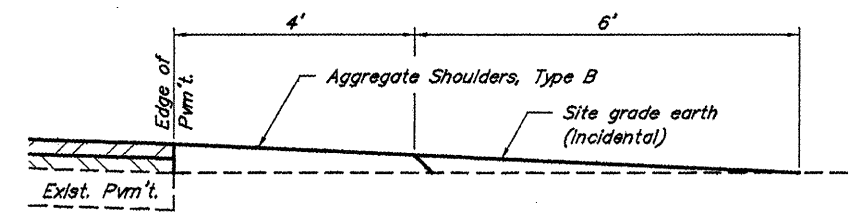
SECTION A-A SIDE ROAD - AGGREGATE
(Est. No. = 2)



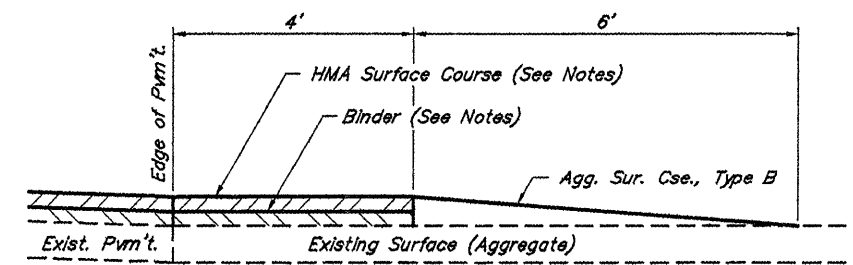
SECTION B-B SIDE ROAD - ASPHALT
(Est. No. = 4)



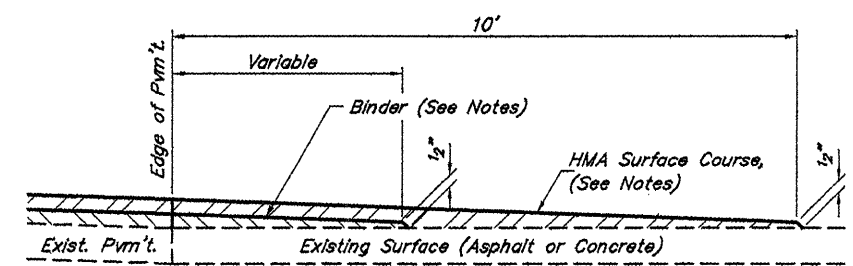
TYPICAL SIDE ROAD DETAILS



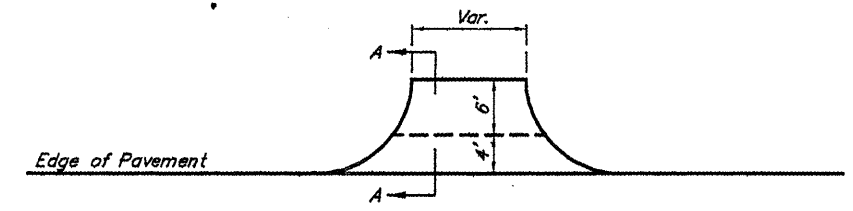
SECTION A-A FIELD ENTRANCE
(Est. No. = 6)



SECTION A-A PRIVATE ENTRANCE - AGGREGATE
(Est. No. = 25)



SECTION A-A PRIVATE ENTRANCE - ASPHALT
(Est. No. = 2)



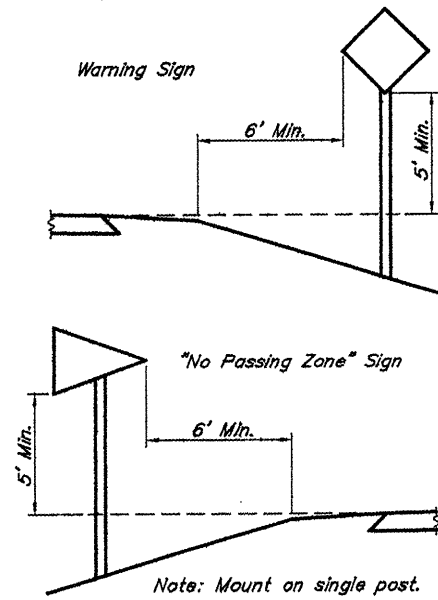
TYPICAL ENTRANCE DETAILS

ROUTE	SECTION	COUNTY	TOTAL SHEETS	SHEET NO.
FAS 898	05-00139-00-RS	SALINE	15	15
PROJECT NO. ARA-RS-898 (107)		CONTRACT NO. 99398		

Location	Name	Signs		Post Length
		No.	Sq. Ft.	
Sta. 51+72 Rt.	CURVE	W1-2R	6.25	16.5
Sta. 67+23 Lt.	CURVE	W1-2L	6.25	16.5
Various (15)*	NO PASSING	W14-3	83.25	240.0
TOTALS			95.75	273.0

* See Schedule of "No Passing Zones" for sign locations. Each location shall have one sign of 5.55 Sq. Ft. and one post with a length of 16.0 Ft. Quantities shown are totals.

SIGN SCHEDULE & MOUNTING DETAIL

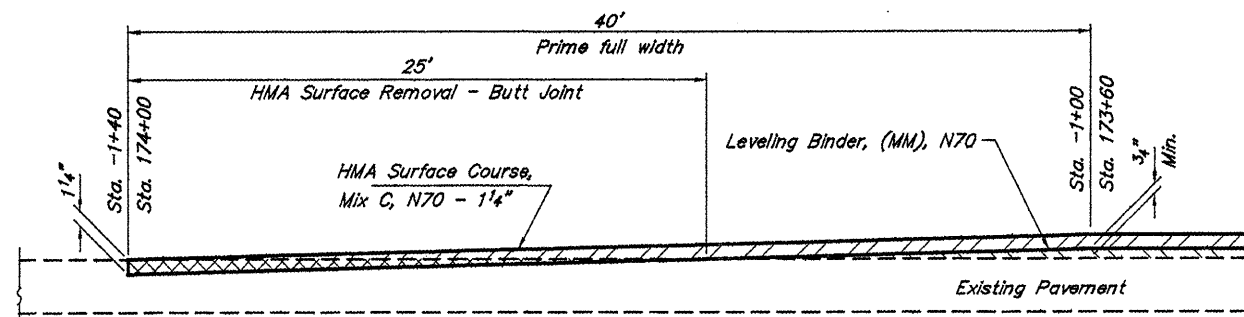


Location	Centerline (Yellow Dashed)	Edge Line (White Solid)	No Passing (Yellow Solid)
Sta. -1+40 to Sta. 174+00	4,970	45,747	16,533

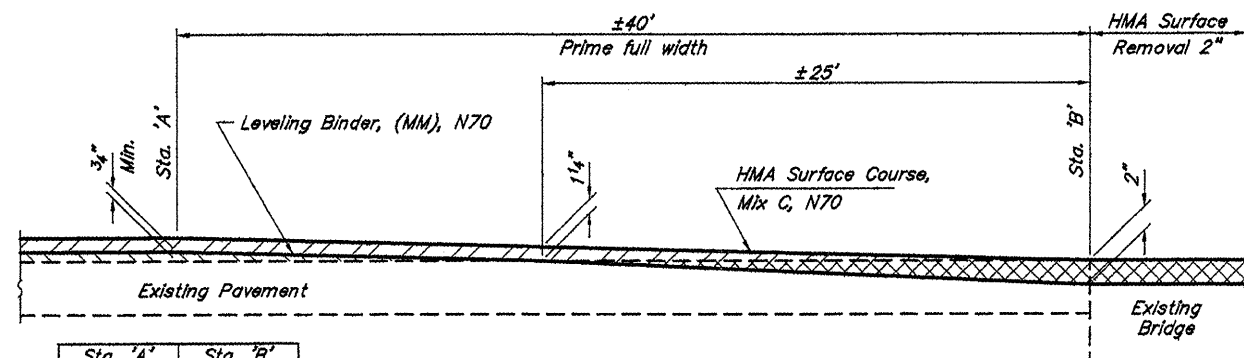
See schedule for limits of "No Passing Zones".
See Standard 78001 for typical pavement markings.

NORTH BOUND LANE		SOUTH BOUND LANE	
Location	Length	Location	Length
Sta. -1+40 to Sta. 1+10	250'	Sta. -1+40 to Sta. 5+10 ¹	650'
Sta. 29+25 ¹ to Sta. 61+00	3,175'	Sta. 38+25 to Sta. 70+00 ¹	3,175'
Sta. 75+00 ¹ to Sta. 90+00	1,500'	Sta. 84+00 to Sta. 98+50 ¹	1,450'
Sta. 101+00 ¹ to Sta. 103+50	250'	Sta. 110+00 to Sta. 112+50 ¹	250'
Sta. 121+00 ¹ to Sta. 126+75	575'	Sta. 130+00 to Sta. 135+75 ¹	575'
Sta. 139+00 ¹ to Sta. 148+00	900'	Sta. 148+25 to Sta. 247+25 ¹	883'
Sta. 241+00 ¹ to Sta. 231+25	975'	Sta. 232+75 to Sta. 222+25 ¹	1,050'
Sta. 202+00 ¹ to Sta. 197+50	450'	Sta. 193+00 to Sta. 188+75 ¹	425'
TOTALS		8,075'	

¹ Denotes location of "No Passing Zone" signs to be erected in accordance with Sign Schedule & Mounting Detail.

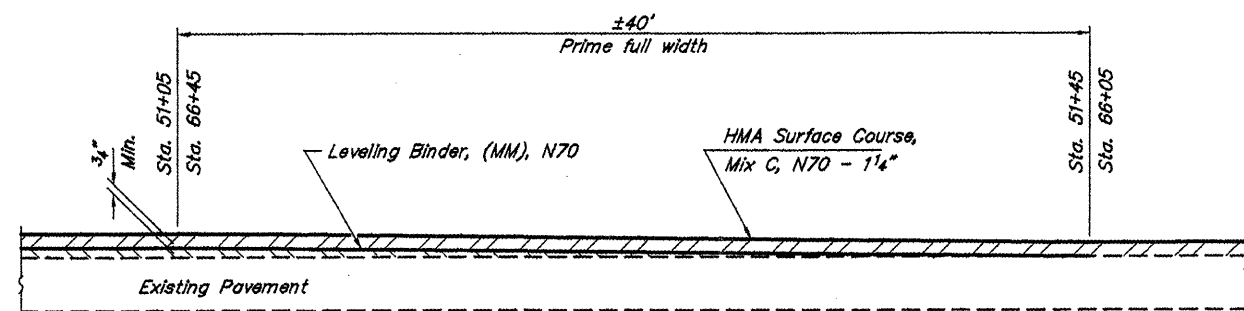


BEGINNING & ENDING BUTT JOINT



Sta. 'A'	Sta. 'B'
0+92	1+32
2+16	1+76
41+06	41+46
43+94	43+54
241+26	241+66
243+22	242+82

BRIDGE PAVING DETAIL



THICKNESS TRANSITION DETAIL