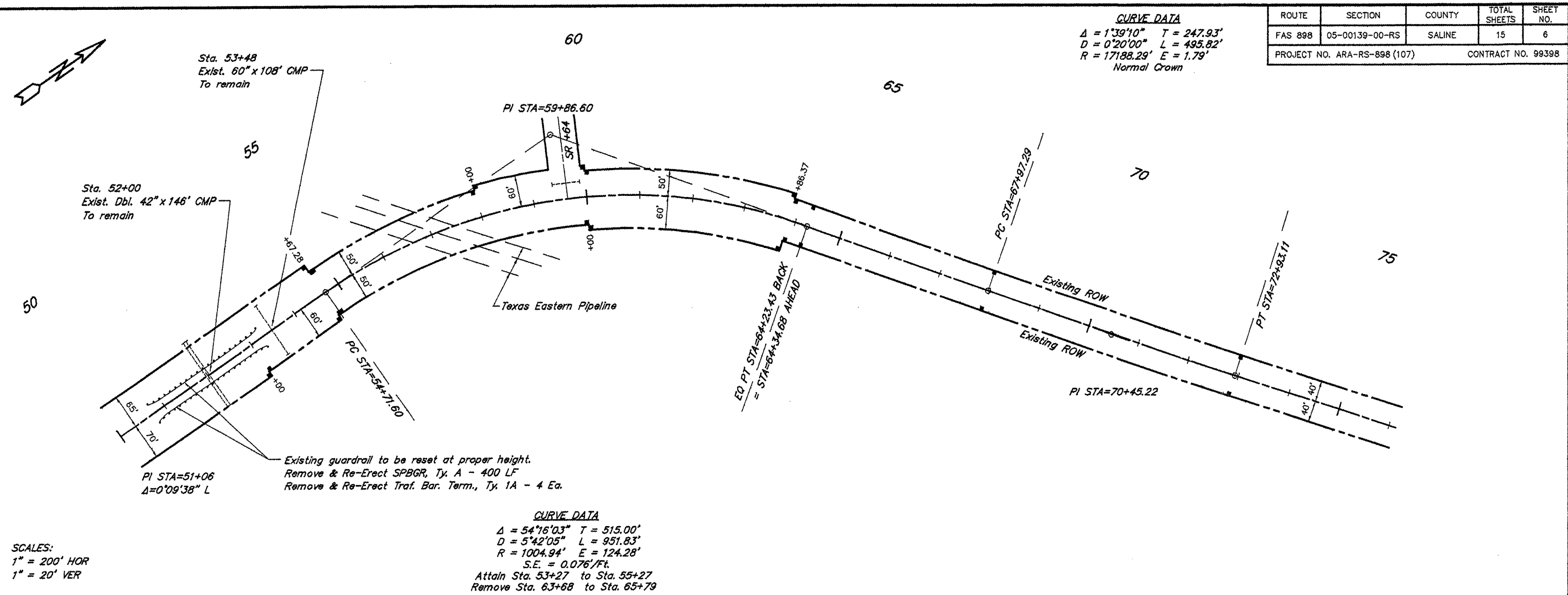


ROUTE	SECTION	COUNTY	TOTAL SHEETS	SHEET NO.
FAS 898	05-00139-00-RS	SALINE	15	6
PROJECT NO. ARA-RS-898 (107)			CONTRACT NO. 99398	

**CURVE DATA**  
 $\Delta = 1^{\circ}39'10''$   $T = 247.93'$   
 $D = 0^{\circ}20'00''$   $L = 495.82'$   
 $R = 17188.29'$   $E = 1.79'$   
 Normal Crown



**CURVE DATA**  
 $\Delta = 54^{\circ}16'03''$   $T = 515.00'$   
 $D = 5^{\circ}42'05''$   $L = 951.83'$   
 $R = 1004.94'$   $E = 124.28'$   
 $S.E. = 0.076'/ft.$   
 Attain Sta. 53+27 to Sta. 55+27  
 Remove Sta. 63+68 to Sta. 65+79

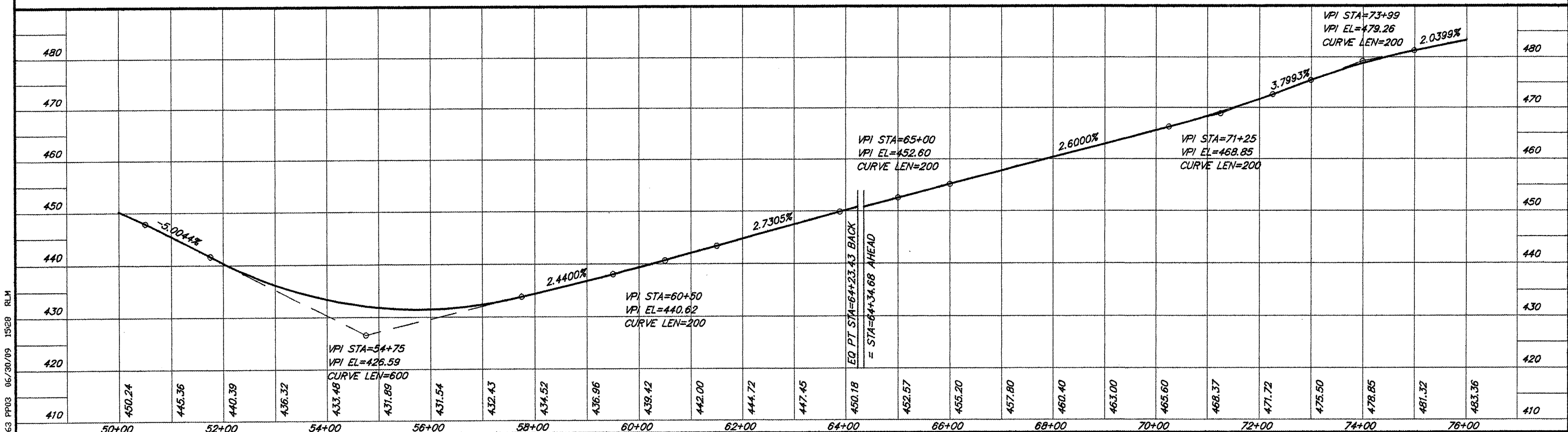
**SCALES:**  
 1" = 200' HOR  
 1" = 20' VER

Sta. 53+48  
 Exist. 60" x 108" CMP  
 To remain

Sta. 52+00  
 Exist. Dbl. 42" x 146" CMP  
 To remain

Existing guardrail to be reset at proper height.  
 Remove & Re-Erect SPBGR, Ty. A - 400 LF  
 Remove & Re-Erect Traf. Bar. Term., Ty. 1A - 4 Ea.

663 PPO3 06/30/09 1528 RLM



PLAN & PROFILE STA. 50+00 - STA. 76+00