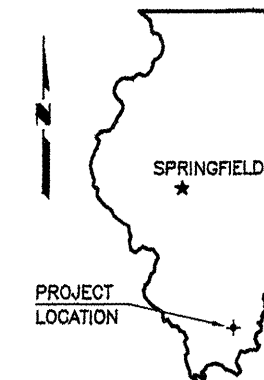




STATE OF ILLINOIS
DEPARTMENT OF TRANSPORTATION
DIVISION OF HIGHWAYS
PLANS FOR PROPOSED

ROUTE	SECTION	COUNTY	TOTAL SHEETS	SHEET NO.
FAS 898	05-00139-00-RS	SALINE	15	1
PROJECT NO. ARA-RS-898 (107)			CONTRACT NO. 99398	

AMERICAN RECOVERY AND REINVESTMENT ACT OF 2009



FAS ROUTE 898 (HARCO ROAD)
SECTION 05-00139-00-RS
PROJECT NO. ARA-RS-898 (107)
JOB NO. C-99-535-05

SUMMARY OF QUANTITIES

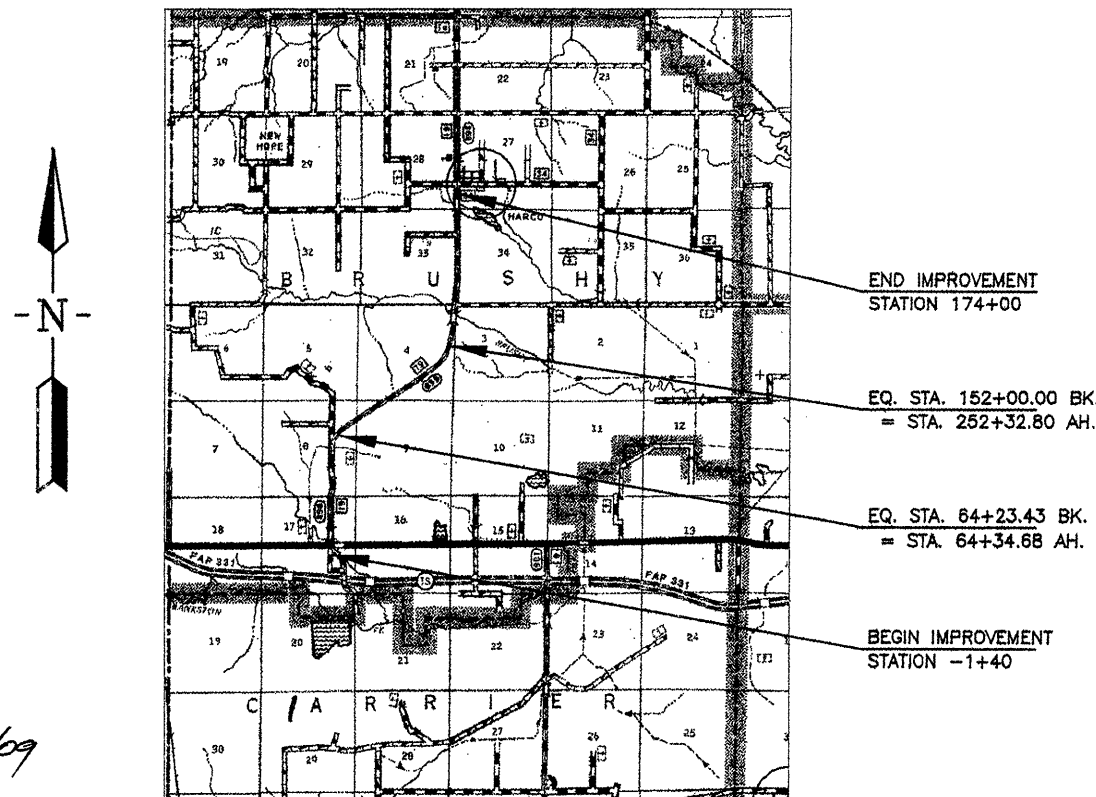
CODE NO.	PAY ITEM	UNIT	TOTAL
40200800*	AGGREGATE SURFACE COURSE, TYPE B	TON	40
40600100	BITUMINOUS MATERIALS (PRIME COAT)	GALLON	2,290
40600300	AGGREGATE (PRIME COAT)	TON	34
40600635	LEVELING BINDER (MACHINE METHOD), N70	TON	3,760
40600982	HOT-MIX ASPHALT SURFACE REMOVAL - BUTT JOINT	SQ YD	147
40603315	HOT-MIX ASPHALT SURFACE COURSE, MIX "C", N70	TON	4,680
44000157	HOT-MIX ASPHALT SURFACE REMOVAL, 2"	SQ YD	1,145
44000198*	HOT-MIX ASPHALT SURFACE REMOVAL, VARIABLE DEPTH	SQ YD	864
48101200	AGGREGATE SHOULDERS, TYPE B	TON	2,550
△ 63301210	REMOVE AND RE-ERECT STEEL PLATE BEAM GUARD RAIL, TYPE A	FOOT	2,180
△ 63301995	REMOVE AND RE-ERECT TRAFFIC BARRIER TERMINAL, TYPE 1A	EACH	16
67100100	MOBILIZATION	L SUM	1
70300100	SHORT-TERM PAVEMENT MARKING	FOOT	4,490
70300220	TEMPORARY PAVEMENT MARKING - LINE 4"	FOOT	67,480
72000100	SIGN PANEL - TYPE 1	SQ FT	96
72800100	TELESCOPING STEEL SIGN SUPPORT	FOOT	273
△ 78001110	PAINT PAVEMENT MARKING - LINE 4"	FOOT	67,480
△ 78100100	RAISED REFLECTIVE PAVEMENT MARKER	EACH	286
△ 78100105	RAISED REFLECTIVE PAVEMENT MARKER (BRIDGE)	EACH	4

* SEE SPECIAL PROVISIONS
△ SPECIALTY ITEM*

SALINE COUNTY

INDEX OF SHEETS

1. COVER SHEET
 2. TYPICAL SECTIONS
 3. SCHEDULES OF QUANTITIES
 - 4.-12. PLAN & PROFILE
 13. INTERSECTION DETAILS - HARCO ROAD & OLD ROUTE 13
 14. TYPICAL SIDE ROAD & ENTRANCE DETAILS
 15. MISCELLANEOUS DETAILS
- STANDARDS
- 701001-02 TRAFFIC CONTROL
 - 701006-03 TRAFFIC CONTROL
 - 701011-02 TRAFFIC CONTROL
 - 701301-03 TRAFFIC CONTROL
 - 701306-02 TRAFFIC CONTROL
 - 701311-03 TRAFFIC CONTROL
 - 701901-01 TRAFFIC CONTROL DEVICES
 - 720001-01 SIGN PANEL MOUNTING DETAILS
 - 720006-02 SIGN PANEL ERECTION DETAILS
 - 780001-02 TYPICAL PAVEMENT MARKINGS
 - 781001-03 RAISED REFLECTIVE PAVEMENT MARKERS
 - BLR 23-3 TRAFFIC BARRIER TERMINAL TYPE 1
 - BLR 24-2 MAILBOX TURNOUTS
- BLR 26-1**



CLASSIFICATION : MAJOR COLLECTOR
ADT : 1700
DESIGN SPEED : 50 MPH

ILLINOIS DEPARTMENT OF TRANSPORTATION	
Approved	07-02-09
<i>[Signature]</i> Saline County, Engineer	
Passed	8-29-2009
<i>[Signature]</i> District 9 Engineer of Local Roads and Streets	
Releasing for Bid Based on Limited Review	8-31-09
<i>[Signature]</i> Deputy Director of Highways, Region 5 Engineer	



[Signature]
Edward W. Miller
PROFESSIONAL ENGINEER
#082-025277
EXPIRES NOV. 30, 2009

E. MILLER ENGINEERING, INC.
CONSULTING ENGINEERS
HARRISBURG, ILLINOIS

CONTRACT NO. 99398

LOCATION MAP

SCALE: 1" = 2 MILES

NET LENGTH OF IMPROVEMENT = 23,161.55 FT. = 4.3867 MILES