

DEPARTMENT OF ENGINEERING  
 DANVILLE, IL  
 R. DAVID SCHMIDT, CITY ENGINEER  
 VOORHEES ST IMPROVEMENT PHASE I  
 CROSS SECTIONS, FOR CUT & FILL  
 SEE EARTHWORK SCHEDULES

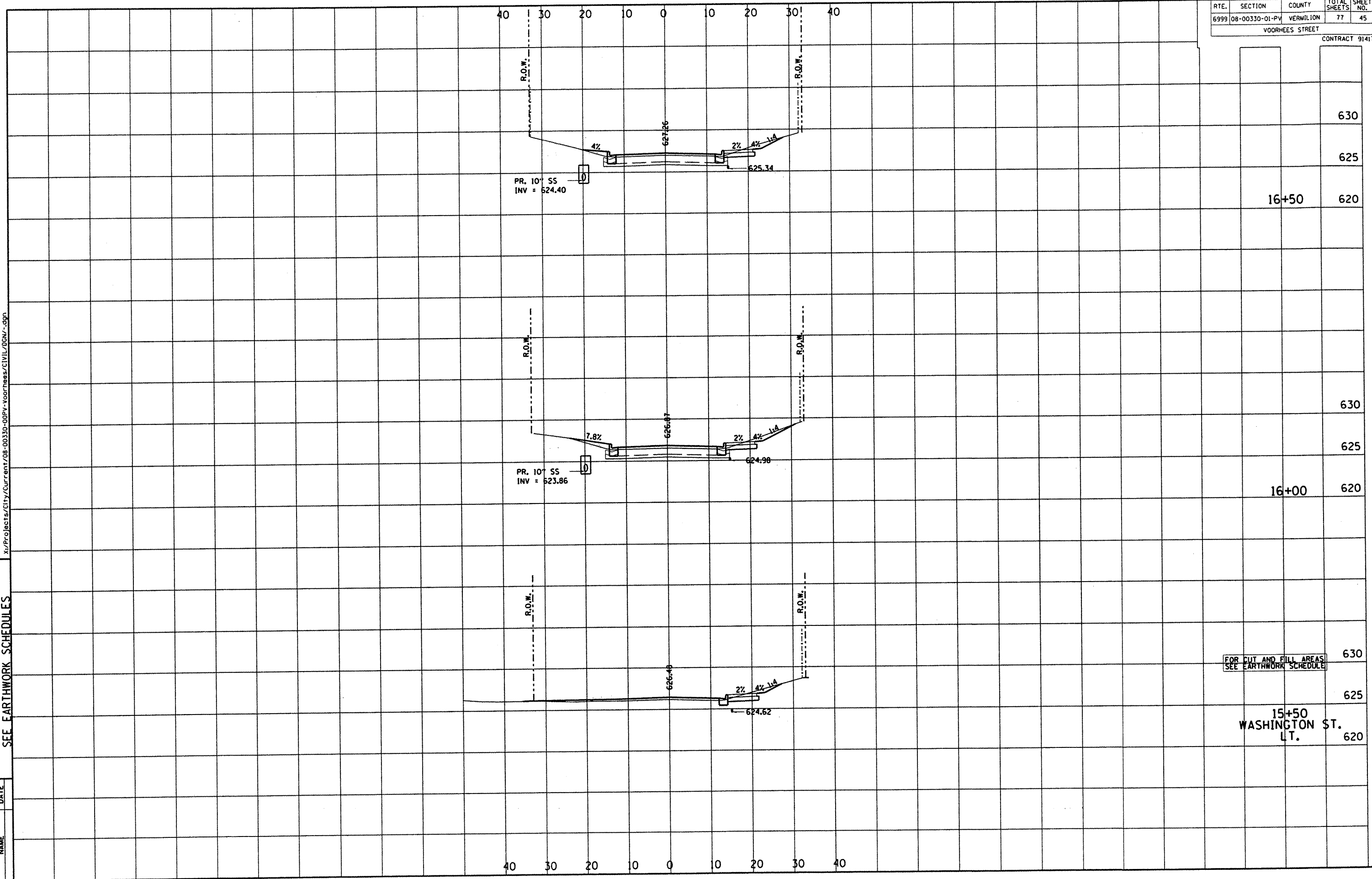
REVISIONS	NAME	DATE

x:\Projects\City\Current\08-00330-00PV-Voorhees\CIVIL\DCM\-.dgn

RTE.	SECTION	COUNTY	TOTAL SHEETS	SHEET NO.
6999	08-00330-01-PV	VERMILION	77	45

VOORHEES STREET

CONTRACT 91417



FOR CUT AND FILL AREAS  
 SEE EARTHWORK SCHEDULE

15+50  
 WASHINGTON ST.  
 LT.

630	
625	
620	16+50
630	
625	
620	16+00
630	
625	
620	15+50 WASHINGTON ST. LT.

40 30 20 10 0 10 20 30 40

R.O.W.

4%

2%

4%

1/4

627.26

625.34

PR. 10" SS  
INV = 624.40

R.O.W.

7.8%

2%

4%

1/4

626.47

624.98

PR. 10" SS  
INV = 623.86

R.O.W.

R.O.W.

2%

4%

1/4

626.48

624.62

40 30 20 10 0 10 20 30 40