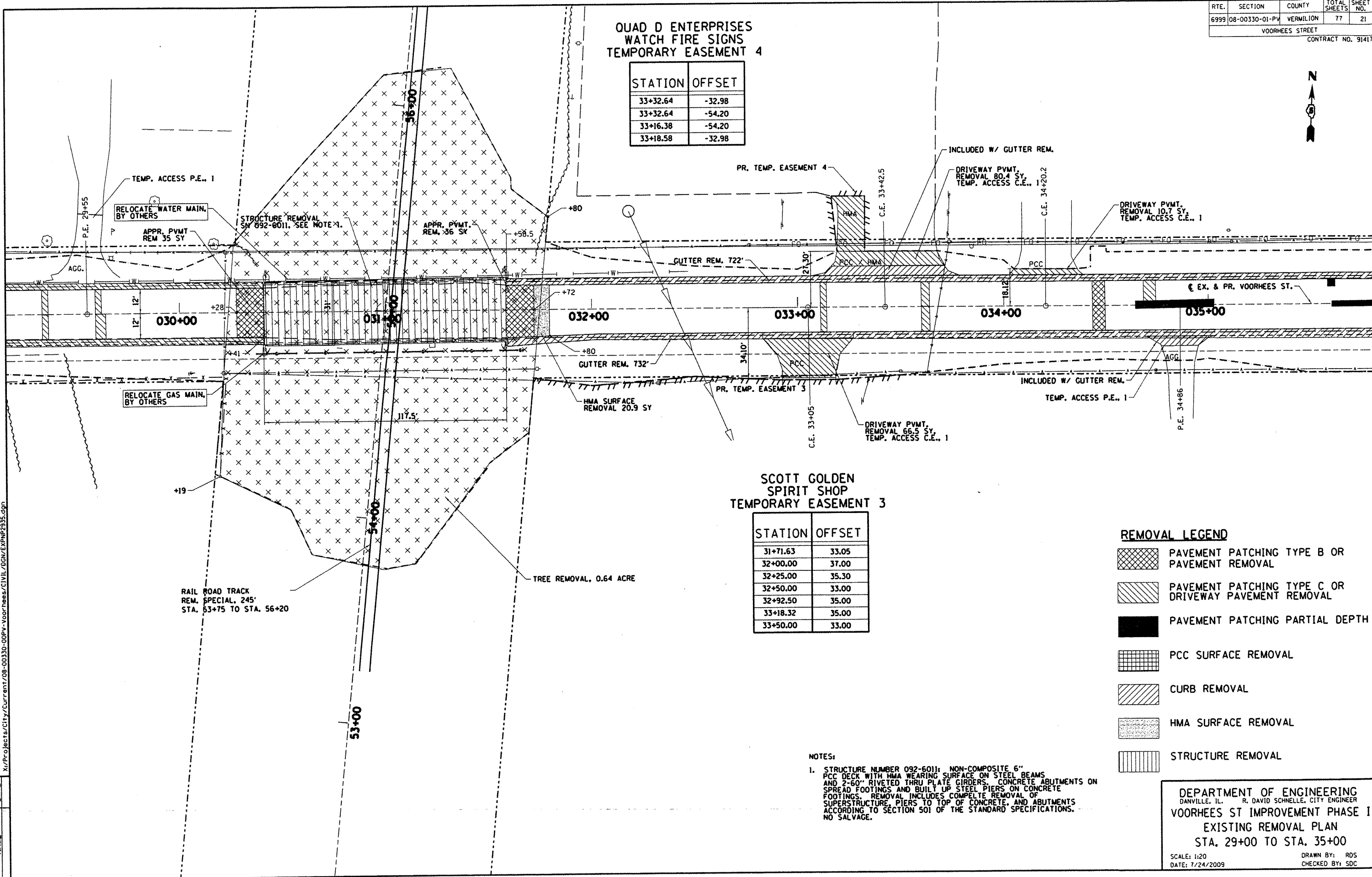


RTE.	SECTION	COUNTY	TOTAL SHEETS	SHEET NO.
6999	08-00330-01-PV	VERMILION	77	21
VOORHEES STREET				
CONTRACT NO. 91417				

**QUAD D ENTERPRISES  
WATCH FIRE SIGNS  
TEMPORARY EASEMENT 4**


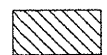


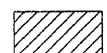


STATION	OFFSET
33+32.64	-32.98
33+32.64	-54.20
33+16.38	-54.20
33+18.58	-32.98



**SCOTT GOLDEN  
SPIRIT SHOP  
TEMPORARY EASEMENT 3**

STATION	OFFSET
31+71.63	33.05
32+00.00	37.00
32+25.00	35.30
32+50.00	33.00
32+92.50	35.00
33+18.32	35.00
33+50.00	33.00

**REMOVAL LEGEND**

-  PAVEMENT PATCHING TYPE B OR PAVEMENT REMOVAL
-  PAVEMENT PATCHING TYPE C OR DRIVEWAY PAVEMENT REMOVAL
-  PAVEMENT PATCHING PARTIAL DEPTH
-  PCC SURFACE REMOVAL
-  CURB REMOVAL
-  HMA SURFACE REMOVAL
-  STRUCTURE REMOVAL

NOTES:  
1. STRUCTURE NUMBER 092-6011: NON-COMPOSITE 6" PCC DECK WITH HMA WEARING SURFACE ON STEEL BEAMS AND 2-60" RIVETED THRU PLATE GIRDERS. CONCRETE ABUTMENTS ON SPREAD FOOTINGS, AND BUILT UP STEEL PIERS ON CONCRETE FOOTINGS. REMOVAL INCLUDES COMPLETE REMOVAL OF SUPERSTRUCTURE, PIERS TO TOP OF CONCRETE, AND ABUTMENTS ACCORDING TO SECTION 501 OF THE STANDARD SPECIFICATIONS. NO SALVAGE.

DEPARTMENT OF ENGINEERING  
DANVILLE, IL. R. DAVID SCHNELLE, CITY ENGINEER  
VOORHEES ST IMPROVEMENT PHASE I  
EXISTING REMOVAL PLAN  
STA. 29+00 TO STA. 35+00  
SCALE: 1:20 DRAWN BY: RDS  
DATE: 7/24/2009 CHECKED BY: SDC

**Revisions**

NO.	DATE	DESCRIPTION

x:\Projects\City\Current\08-00330-00PV-voorhees\CIVIL\DWG\EXP\2335.dgn