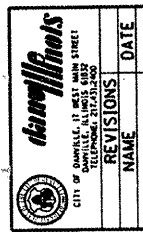
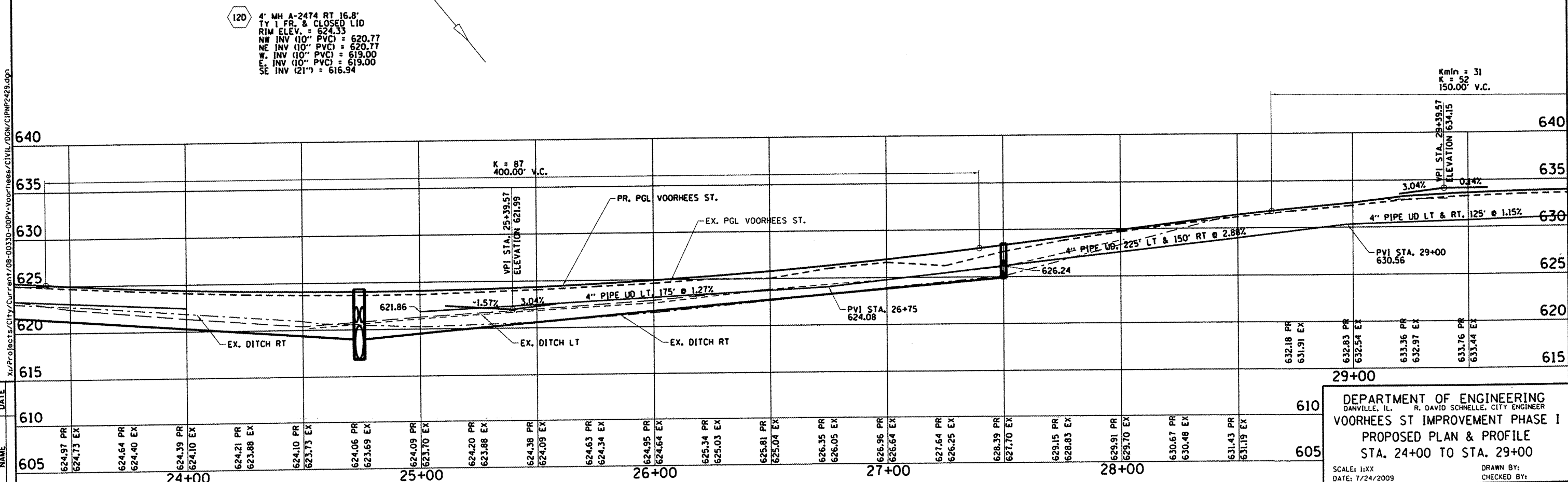
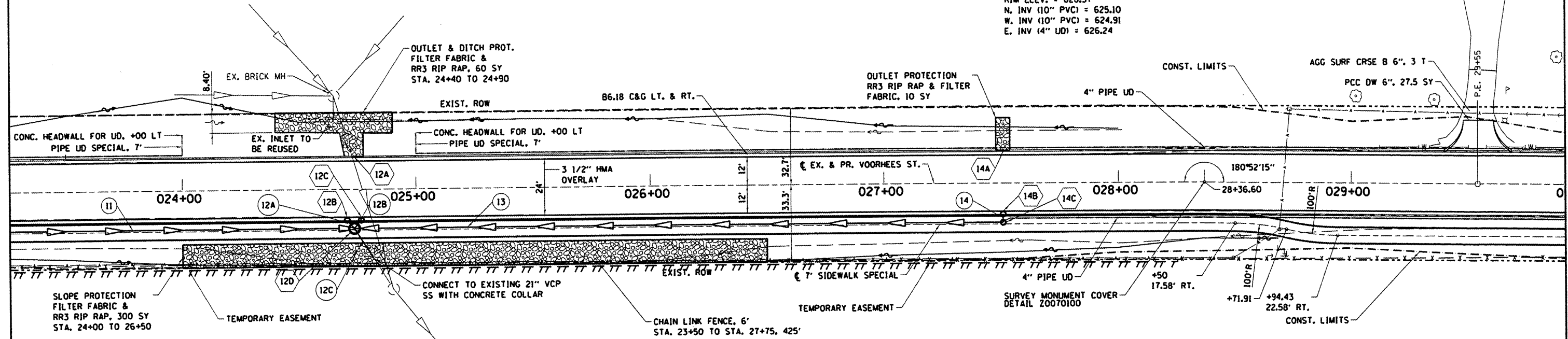


RTE.	SECTION	COUNTY	TOTAL SHEETS	SHEET NO.
6999	08-00330-01-PV	VERMILION	77	20
VOORHEES STREET				
CONTRACT NO. 91417				

- 12A 4' CURB CUT 2472 DEPRESS OVER 9" EACH SIDE 12% GUTTER CROSS SLOPE PAID FOR AS B6.18 C&G
- 12B INLET A-2471 RT 13.3' TY 3 F&G PR. GUTTER \bar{r} = 623.79 SE INV (10" PVC) = 620.79
- 12C INLET A-2477 RT 13.3' TY 3 F&G PR. GUTTER \bar{r} = 623.79 SW INV (10" PVC) = 620.79
- 12A 10" SS CL B TY1, 2' @ 1.00%
- 12B 10" SS CL B TY1, 2' @ 1.00%
- 12C 21" SS CL B TY 2, 14' @ 1.00%
- 13 10" SS CL B TY2, 276' @ 2.14%
- 14A 2' CURB CUT 2750 DEPRESS OVER 9" EACH SIDE 12% GUTTER CROSS SLOPE PAID FOR AS B6.18 C&G
- 14B INLET A-2750 RT 13.3' TY 3V F&G PR. GUTTER \bar{r} = 628.12 S. INV (10" PVC) = 625.12
- 14 10" SS CL B TY1, 2' @ 1.00%
- 14C INLET A-2750 RT 16.8' TY 1 FR. & CLOSED LID RIM ELEV. = 628.57 N. INV (10" PVC) = 625.10 W. INV (10" PVC) = 624.91 E. INV (4" UD) = 626.24



DATE	REVISIONS	NAME
610	624.91 PR	
610	624.73 EX	
610	624.64 PR	
610	624.40 EX	
610	624.39 PR	
610	624.10 EX	
610	624.21 PR	
610	623.88 EX	
610	624.10 PR	
610	623.73 EX	
610	624.06 PR	
610	623.69 EX	
610	624.09 PR	
610	623.70 EX	
610	624.20 PR	
610	623.88 EX	
610	624.38 PR	
610	624.09 EX	
610	624.63 PR	
610	624.34 EX	
610	624.95 PR	
610	624.64 EX	
610	625.34 PR	
610	625.03 EX	
610	625.81 PR	
610	625.04 EX	
610	626.35 PR	
610	626.05 EX	
610	626.96 PR	
610	626.64 EX	
610	627.64 PR	
610	626.25 EX	
610	628.39 PR	
610	627.70 EX	
610	629.15 PR	
610	628.83 EX	
610	629.91 PR	
610	629.70 EX	
610	630.67 PR	
610	630.48 EX	
610	631.43 PR	
610	631.19 EX	
605	624.91 PR	
605	624.73 EX	
605	624.64 PR	
605	624.40 EX	
605	624.39 PR	
605	624.10 EX	
605	624.21 PR	
605	623.88 EX	
605	624.10 PR	
605	623.73 EX	
605	624.06 PR	
605	623.69 EX	
605	624.09 PR	
605	623.70 EX	
605	624.20 PR	
605	623.88 EX	
605	624.38 PR	
605	624.09 EX	
605	624.63 PR	
605	624.34 EX	
605	624.95 PR	
605	624.64 EX	
605	625.34 PR	
605	625.03 EX	
605	625.81 PR	
605	625.04 EX	
605	626.35 PR	
605	626.05 EX	
605	626.96 PR	
605	626.64 EX	
605	627.64 PR	
605	626.25 EX	
605	628.39 PR	
605	627.70 EX	
605	629.15 PR	
605	628.83 EX	
605	629.91 PR	
605	629.70 EX	
605	630.67 PR	
605	630.48 EX	
605	631.43 PR	
605	631.19 EX	

DEPARTMENT OF ENGINEERING
 DANVILLE, ILL. R. DAVID SCHNELLE, CITY ENGINEER
VOORHEES ST IMPROVEMENT PHASE I
PROPOSED PLAN & PROFILE
STA. 24+00 TO STA. 29+00
 SCALE: 1:XX
 DATE: 7/24/2009
 DRAWN BY:
 CHECKED BY:

X:\Projects\City\Current\08-00330-00PV-Voorhees\CIVIL\DWG\CIPR2429.dwg