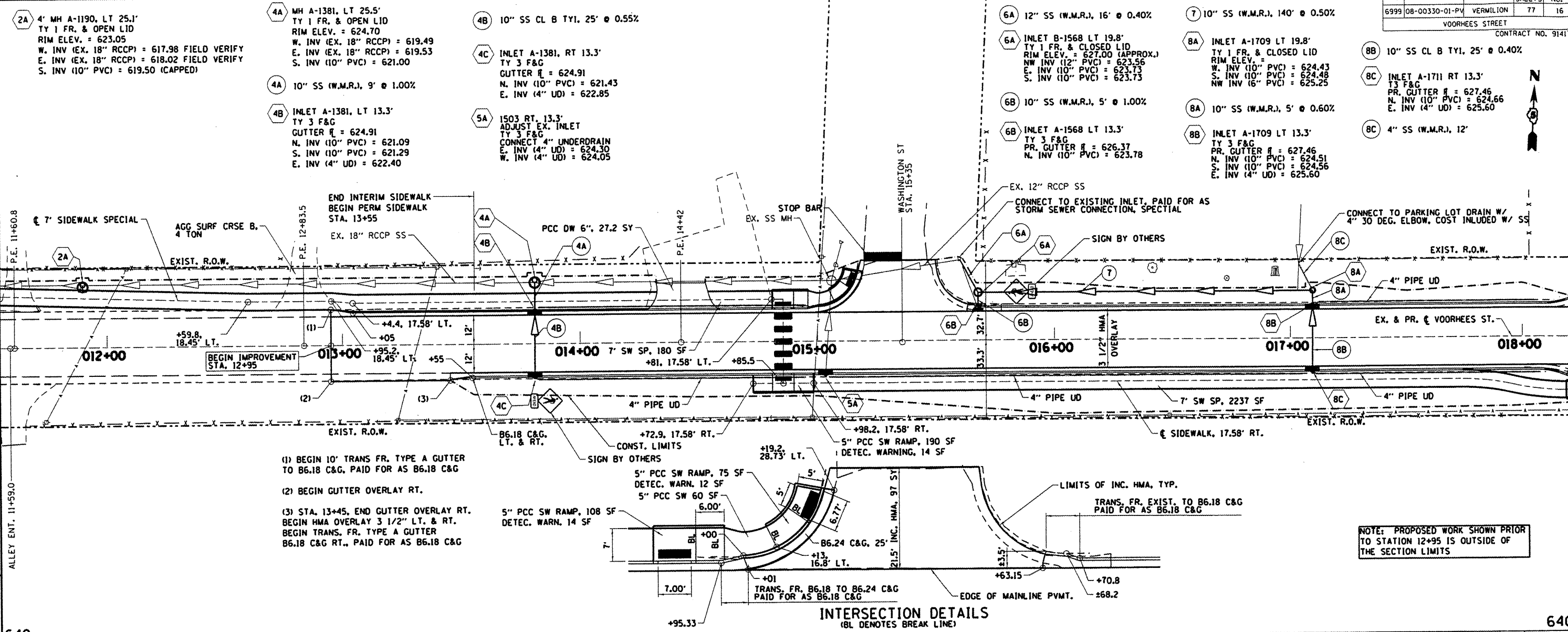
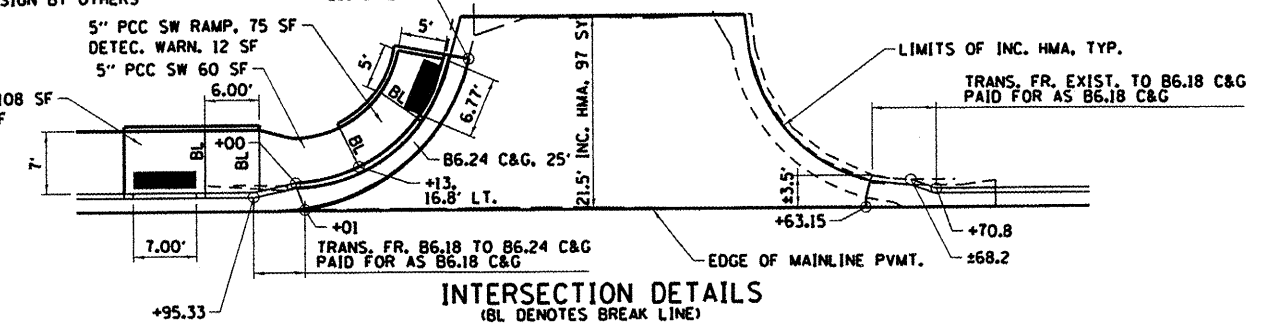


RTE.	SECTION	COUNTY	TOTAL SHEETS	SHEET NO.
6999	08-00330-01-PV	VERMILION	77	16

CONTRACT NO. 91417



- (1) BEGIN 10' TRANS FR. TYPE A GUTTER TO B6.18 C&G, PAID FOR AS B6.18 C&G
- (2) BEGIN GUTTER OVERLAY RT.
- (3) STA. 13+45, END GUTTER OVERLAY RT. BEGIN HMA OVERLAY 3 1/2" LT. & RT. BEGIN TRANS. FR. TYPE A GUTTER B6.18 C&G RT., PAID FOR AS B6.18 C&G



NOTE: PROPOSED WORK SHOWN PRIOR TO STATION 12+95 IS OUTSIDE OF THE SECTION LIMITS

Station	Elevation	Station	Elevation	Station	Elevation	Station	Elevation	Station	Elevation	Station	Elevation	Station	Elevation	Station	Elevation	Station	Elevation																									
12+00	623.25 EX	13+00	623.51 EX	14+00	623.73 EX	15+00	623.91 EX	16+00	624.12 EX	17+00	624.41 EX	18+00	624.92 PR	624.58 EX	625.12 PR	624.80 EX	625.31 PR	625.02 EX	625.51 PR	625.15 EX	625.70 PR	625.35 EX	625.90 PR	625.54 EX	626.09 PR	625.62 EX	626.29 PR	625.98 EX	626.48 PR	626.13 EX	626.68 PR	626.40 EX	626.87 PR	626.55 EX	627.07 PR	626.77 EX	627.26 PR	626.99 EX	627.46 PR	627.20 EX	627.65 PR	627.41 EX

DEPARTMENT OF ENGINEERING  
 DANVILLE, ILL. R. DAVID SCHNELLE, CITY ENGINEER  
**VOORHEES ST IMPROVEMENT PHASE I**  
 PROPOSED PLAN & PROFILE  
 STA. 12+00 TO STA. 18+00

SCALE: 1:20  
 DATE: 7/24/2009  
 DRAWN BY: ROS  
 CHECKED BY: SDC

**damill**  
 CITY OF DANVILLE, ILLINOIS  
 TELEPHONE: 618-232-2000

X:\Projects\City\Current\08-00330-00PV-Voorhees\CIVIL\DWG\CIPN1218.dwg