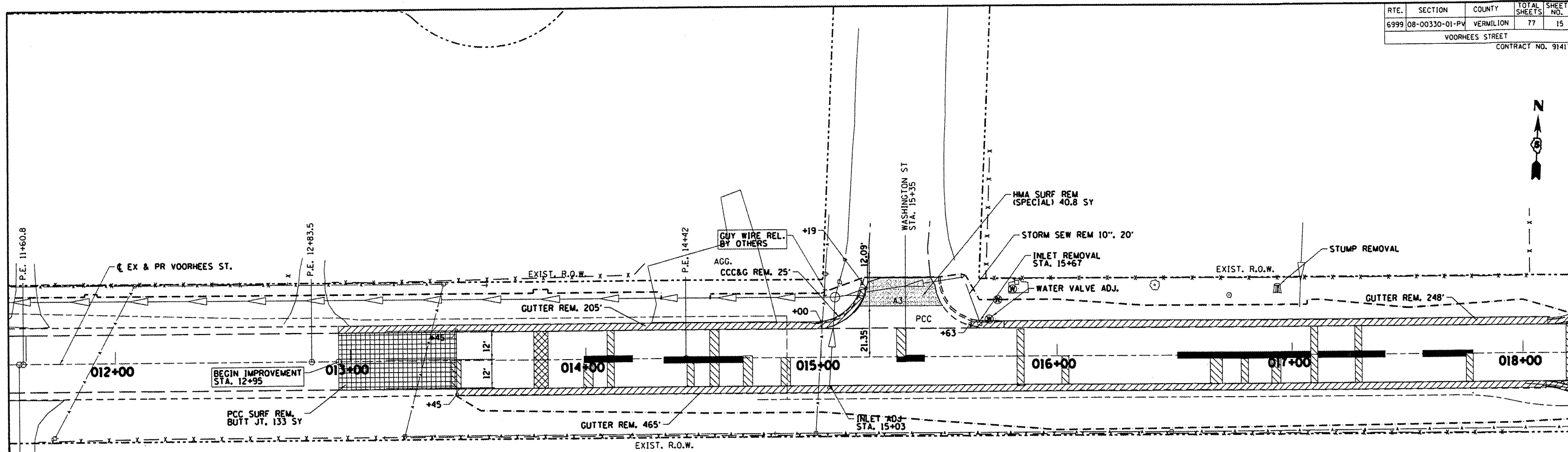


RTE.	SECTION	COUNTY	TOTAL SHEETS	SHEET NO.
6999	08-00330-01-PV	VERMILION	77	15
VOORHEES STREET				
CONTRACT NO. 91417				

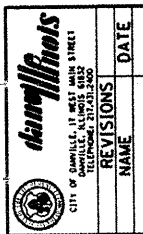


NOTE: PROPOSED WORK SHOWN PRIOR TO STATION STATION 12+95 IS OUTSIDE OF THE SECTION LIMITS

REMOVAL LEGEND

- PAVEMENT PATCHING TYPE B OR PAVEMENT REMOVAL
- PAVEMENT PATCHING TYPE C OR DRIVEWAY PAVEMENT REMOVAL
- PAVEMENT PATCHING PARTIAL DEPTH
- PCC SURFACE REMOVAL
- CURB REMOVAL
- HMA SURFACE REMOVAL
- STRUCTURE REMOVAL

DEPARTMENT OF ENGINEERING
 DANVILLE, IL. R. DAVID SCHNELLE, CITY ENGINEER
 VOORHEES ST IMPROVEMENT PHASE I
 EXISTING REMOVAL PLAN
 STA. 12+00 TO STA. 18+00
 SCALE: 1:20 DRAWN BY: RDS
 DATE: 7/24/2009 CHECKED BY: SDC



X:\Projects\City\Currant\08-00330-00PV-voorhees\CIVIL\DDV\EXP\1218.dgn

ALLEY ENT. 11+59.0 P.E. 11+60.8

REVISIONS	DATE