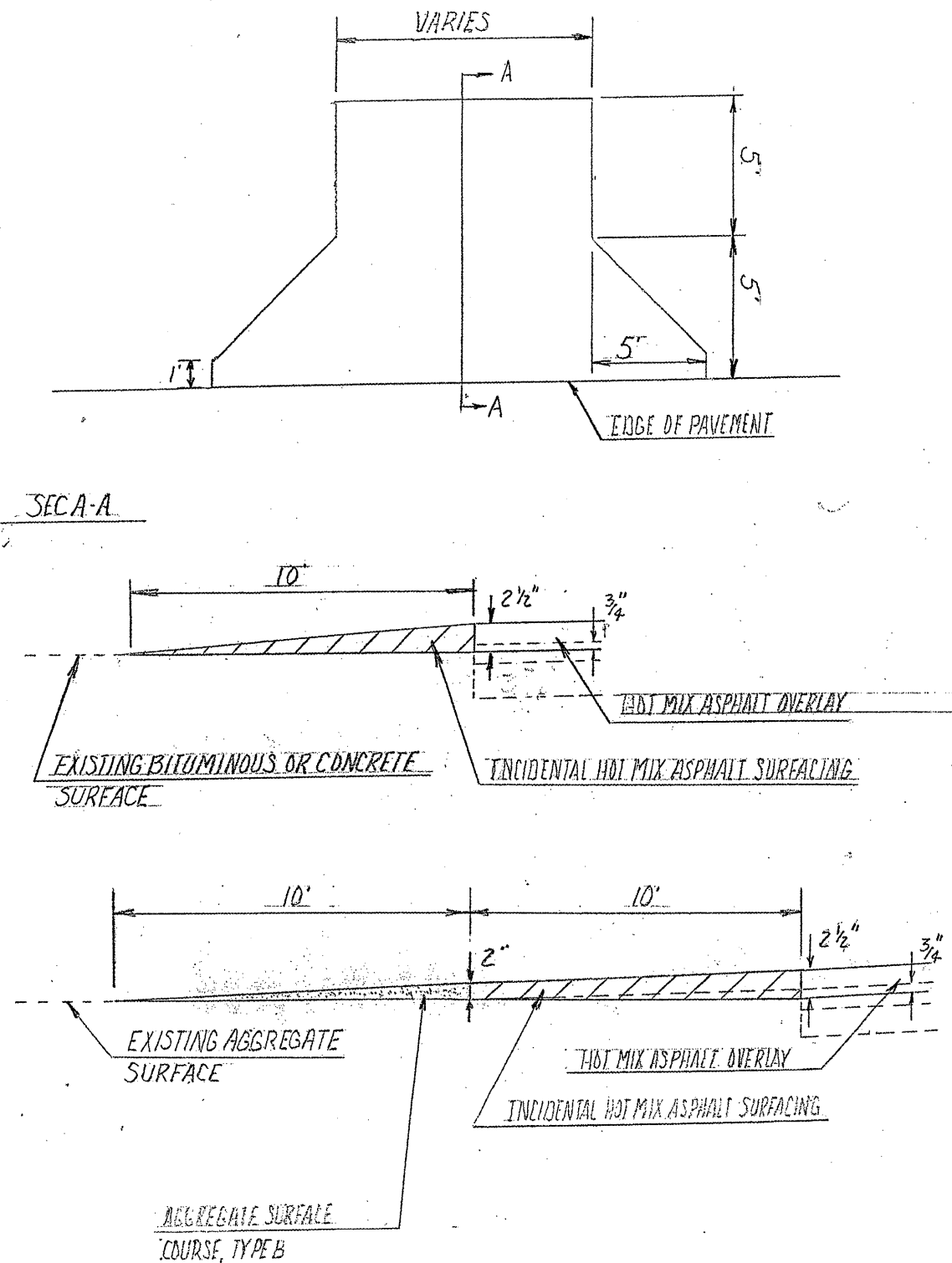
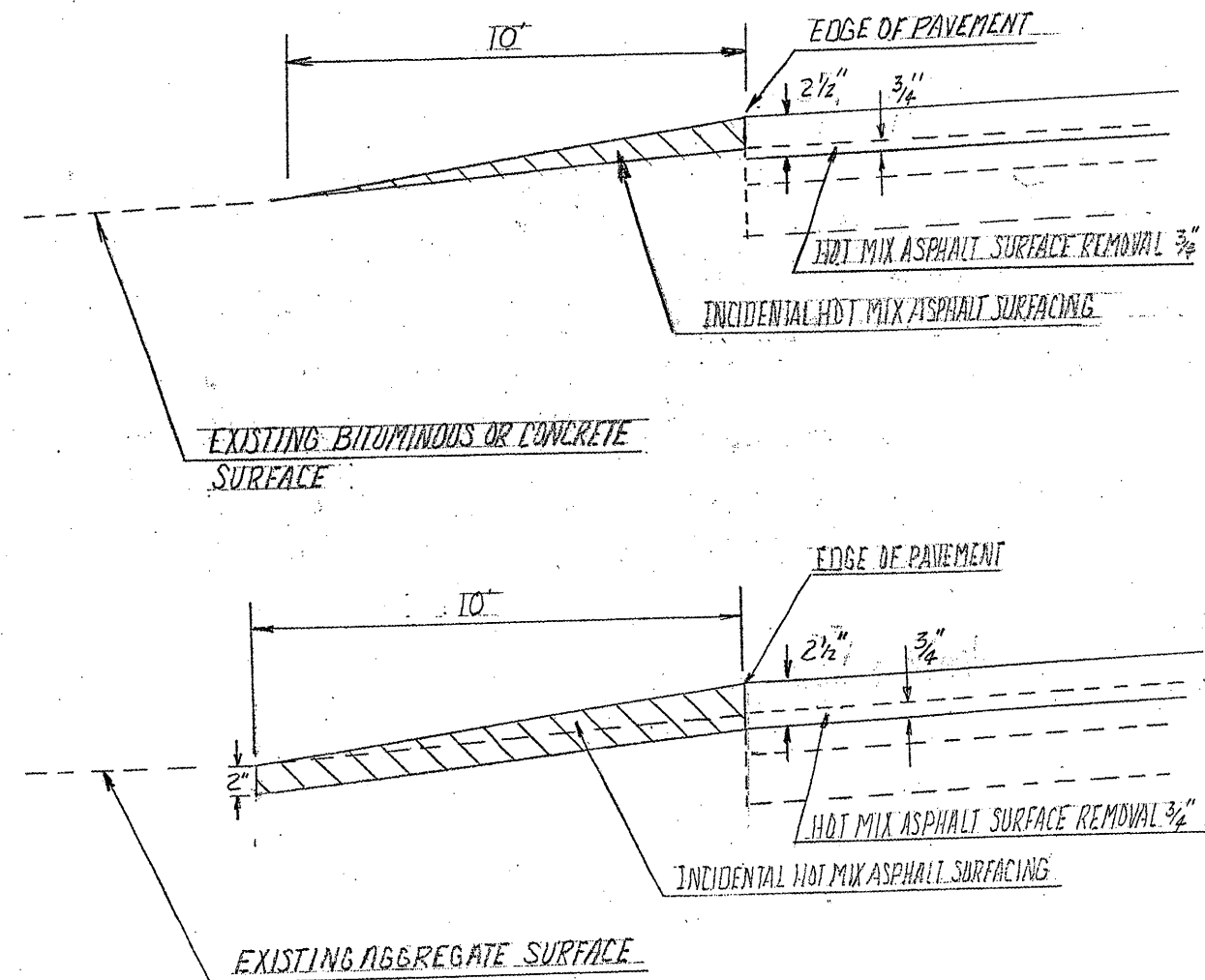


DETAIL FOR HMA OVERLAY AT ENTRANCES



DETAILS FOR HMA OVERLAY AT INTERSECTIONS

- | | |
|--------------------------------------|-----------------------------------|
| Laural Drive (Rt. Station 93+58) | CH 30 (Lt. Station 125+72) |
| 2150N (Rt. Station 98+17) | Neff Lane (Lt. Station 158+35) |
| Wynn Road (Lt. Station 99+27) | Short Road (Rt. Station 102+81) |
| Killion's Ridge (Lt. Station 116+72) | Baltic Drive (Rt. Station 209+31) |
| Carleton's Dell (Rt. Station 125+18) | |



Prepared by:
 Vermilion County Highway Dept.
 2732 Batestown Road
 Oakwood, Illinois 61858

DENMARK RD. (C.H. 20)
 2009 RESURFACING
 SECTION 07-00160-00-RS

SHEET 46
OF 71
June 29, 2009