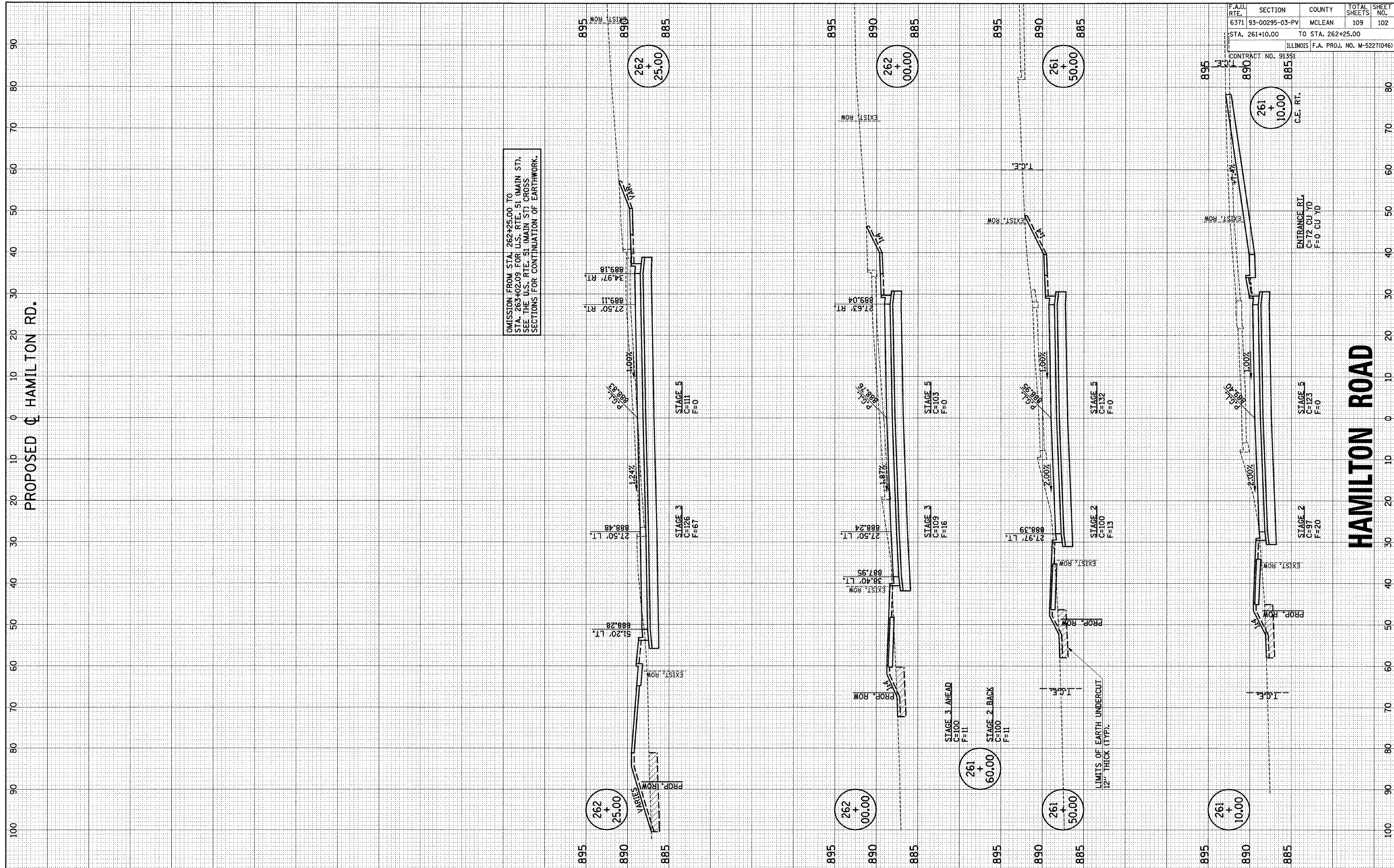


FINAL SURVEY PLOTTED TEMPLATE NO. _____ BY _____ DATE _____
 NOTE BOOK NO. _____ AREAS CHECKED _____

ORIGINAL SURVEY PLOTTED TEMPLATE NO. _____ BY _____ DATE _____
 NOTE BOOK NO. _____ AREAS CHECKED _____

PROPOSED ϕ HAMILTON RD.



OMISSION FROM STA. 262+25.00 TO STA. 263+02.09 FOR U.S. RTE. 51 (MAIN ST). SEE THE U.S. RTE. 51 (MAIN ST) CROSS SECTIONS FOR CONTINUATION OF EARTHWORK.

F.A.U. RTE.	SECTION	COUNTY	TOTAL SHEETS	SHEET NO.
6371	93-00295-03-PV	MCLEAN	109	102
STA. 261+10.00 TO STA. 262+25.00				
ILLINOIS F.A. PROJ. NO. M-5227(046)				

CONTRACT NO. 91351