

F.A.U. RTE.	SECTION	COUNTY	TOTAL SHEETS	SHEET NO.
6371	93-00295-03-PV	MCLEAN	109	89
STA.	TO STA.		ILLINOIS F.A. PROJ. NO. M-5227(046)	
			CONTRACT NO. 91351	

SIDEWALK GENERAL NOTES

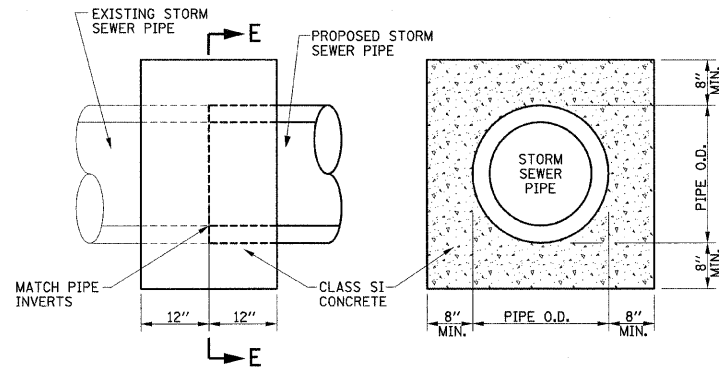
THE COST OF CONSTRUCTING THE DEPRESSED CURB AS SHOWN SHALL BE CONSIDERED INCLUDED IN THE COST OF CONSTRUCTING COMBINATION CONCRETE CURB AND GUTTER AND NO ADDITIONAL COMPENSATION WILL BE ALLOWED.

THE COST OF FURNISHING AND INSTALLING THE 3/4" EXPANSION JOINTS AND #6-18" LONG TIE BARS AND THE COST OF CONSTRUCTING THE P.C.C. SIDEWALK THICKNESS TRANSITION, INCLUDING THE ADJACENT CURBING AS SHOWN, SHALL BE INCLUDED IN THE COST OF CONSTRUCTING P.C. CONCRETE SIDEWALK 4" AND NO ADDITIONAL COMPENSATION WILL BE ALLOWED.

THE DETECTABLE WARNINGS SHALL BE A CAST IN PLACE PREFABRICATED DETECTABLE WARNING SURFACE SYSTEM 24" x 48" WITH TRUNCATED DOMES IN ACCORDANCE WITH STANDARD 424001, SECTION 424 OF THE STANDARD SPECIFICATIONS, AND THE SPECIAL PROVISIONS. THE DETECTABLE WARNINGS SHALL BE COLORED WITH A CONTRASTING COLOR APPROVED BY THE ENGINEER. THE DETECTABLE WARNINGS WILL BE PAID FOR AT THE CONTRACT UNIT PRICE PER SQUARE FOOT FOR DETECTABLE WARNINGS.

THE NORMAL CROSS SLOPES OF SIDEWALKS SHALL BE 2.0% EXCEPT AT THE RAMP LOCATIONS.

TRANSVERSE GROOVED JOINTS SHALL BE PLACED IN THE P.C. CONCRETE SIDEWALK 4" AT 5' CENTERS AND 3/4" EXPANSION JOINTS AT 100' CENTERS.

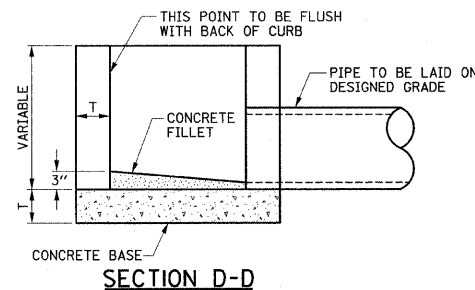


ELEVATION

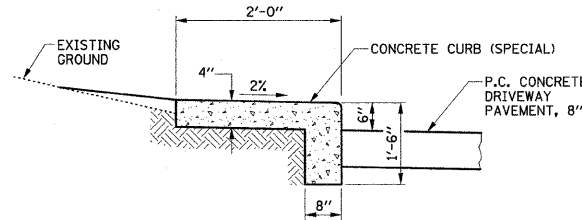
SECTION E-E

NOTE
THE CONCRETE COLLARS SHALL BE UTILIZED WHERE CONNECTING STORM SEWERS OF DIFFERENT TYPES. THE COST OF CONSTRUCTING THE CONCRETE COLLARS WILL BE PAID FOR AT THE CONTRACT UNIT PRICE PER EACH FOR CONCRETE COLLAR.

CONCRETE COLLAR DETAILS



SECTION D-D

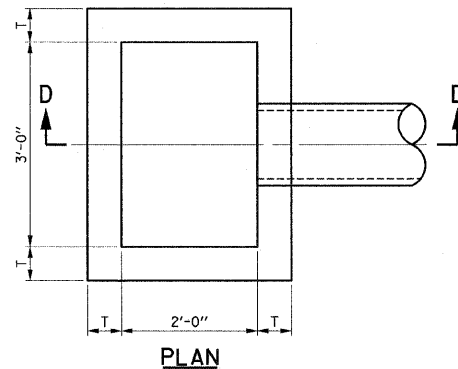


NOTES:

1. SAWED TRANSVERSE CONTRACTION JOINTS 2" DEEP SHALL BE PLACED AT LOCATIONS AS DIRECTED BY THE ENGINEER TO MATCH THE JOINT PATTERN OF THE EXISTING CURBS.
2. THE CONCRETE CURB (SPECIAL) WILL BE PAID FOR AT THE CONTRACT UNIT PRICE PER FOOT MEASURED ALONG THE FACE OF THE CURB. THE PRICE SHALL INCLUDE ALL LABOR AND MATERIALS INCLUDING EXCAVATION, SAW JOINTS AND BACKFILLING.

CONCRETE CURB (SPECIAL) DETAIL

LT. STA. 300+00.7 - C.E.



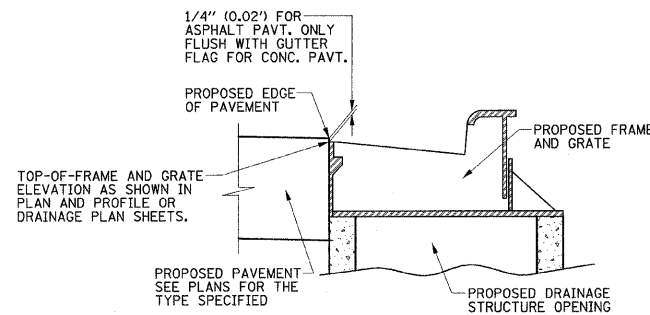
PLAN

BICYCLE SAFE FRAME AND GRATE

NEENAH NO. R-3067 WITH TYPE A GRATE FOR FULL HEIGHT CURB AND NEENAH NO. R-3290-A WITH TYPE A GRATE FOR DEPRESSED CURB

MATERIALS PERMITTED FOR INLETS	T
PRECAST REINFORCED CONCRETE SECTIONS	3"
CAST-IN-PLACE CONCRETE	6"

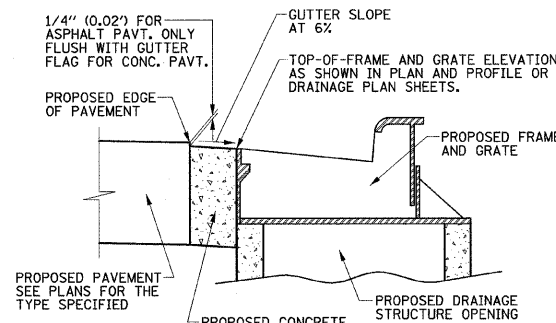
DETAIL OF INLET - TYPE H



NOTES:

1. THIS DETAIL SHALL BE APPLICABLE FOR PROPOSED FRAMES AND GRATES PLACED WITHIN COMBINATION CONCRETE CURB AND GUTTER, TYPE B-6.18.
2. THE TOP-OF-FRAME ELEVATIONS SHOWN IN THE PLAN AND PROFILE OR DRAINAGE PLAN SHEETS ARE THE SAME AS THE EDGE OF PAVEMENT ELEVATIONS FOR P.C. CONCRETE PAVEMENTS AND 0.02' LOWER FOR BITUMINOUS PAVEMENTS THAN THE ADJACENT PROPOSED EDGE OF PAVEMENT ELEVATION.

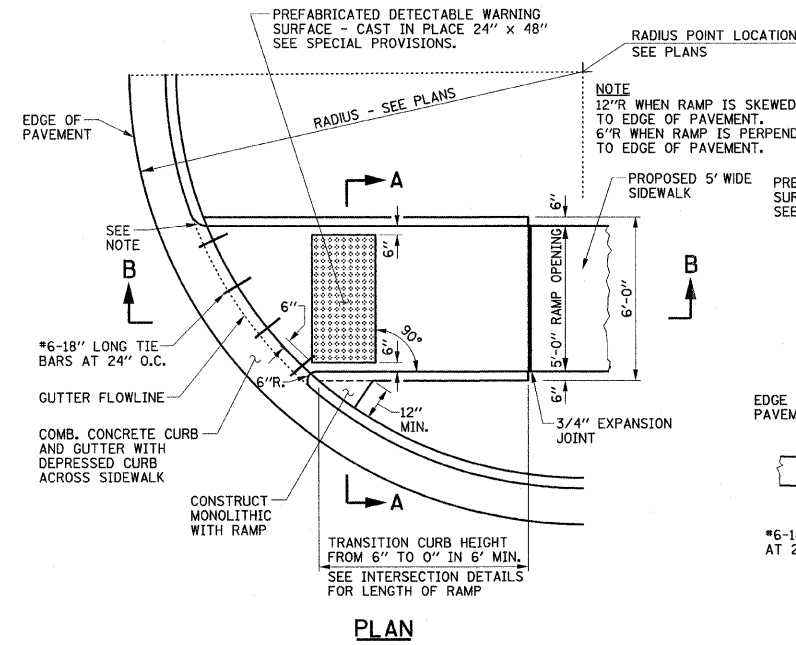
DRAINAGE STRUCTURE FRAME AND GRATE DETAIL FOR COMB. CONC. CURB AND GUTTER, TYPE B.6-18



NOTES:

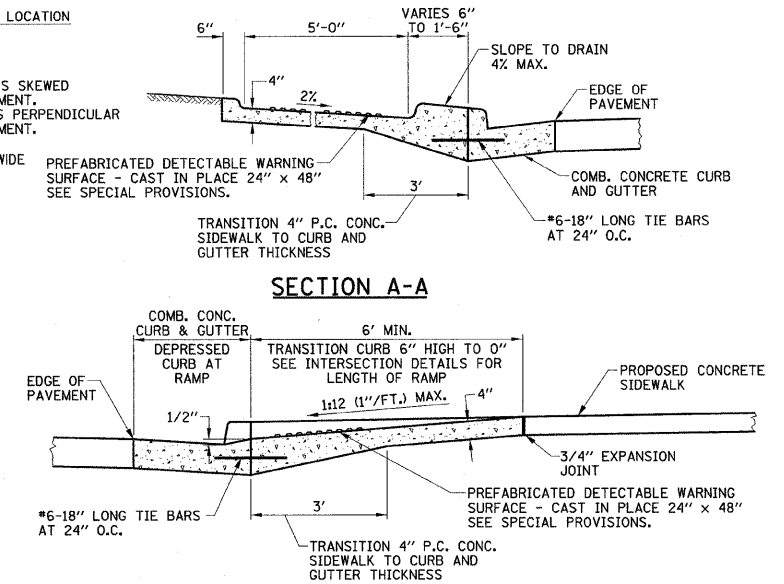
1. THIS DETAIL SHALL BE APPLICABLE FOR PROPOSED FRAMES AND GRATES PLACED WITHIN COMBINATION CONCRETE CURB AND GUTTER, TYPE B-6.24.
2. THE TOP-OF-FRAME ELEVATIONS SHOWN IN THE PLAN AND PROFILE OR DRAINAGE PLAN SHEETS ARE 0.03' LOWER FOR P.C. CONCRETE PAVEMENTS AND 0.05' LOWER FOR BITUMINOUS PAVEMENTS THAN THE ADJACENT PROPOSED EDGE OF PAVEMENT ELEVATION.

DRAINAGE STRUCTURE FRAME AND GRATE DETAIL FOR COMB. CONC. CURB AND GUTTER, TYPE B.6-24



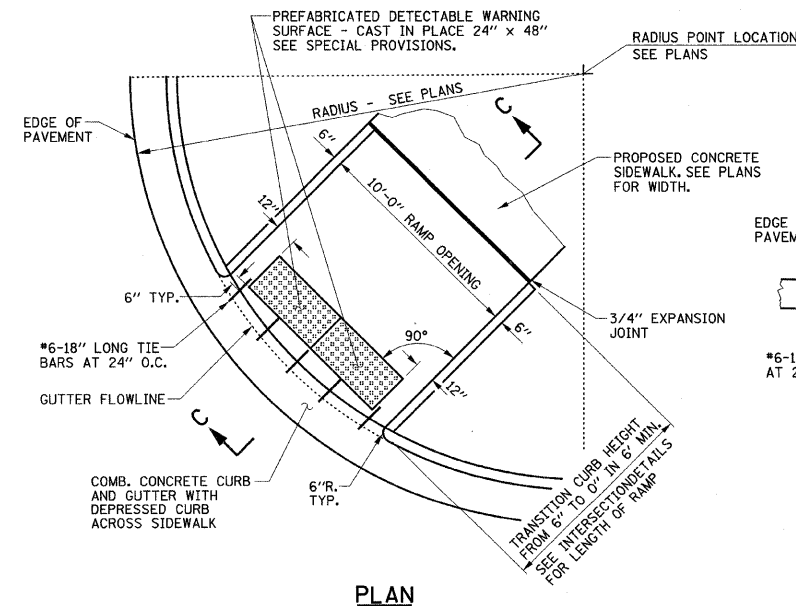
PLAN

5' WIDE CONCRETE SIDEWALK RAMP DETAILS



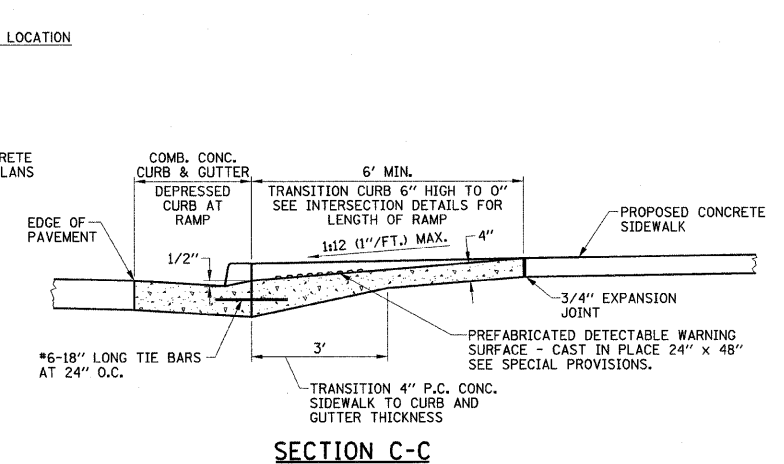
SECTION A-A

SECTION B-B



PLAN

PEDESTRIAN TRAIL RAMP DETAILS



SECTION C-C

ILLINOIS DEPARTMENT OF TRANSPORTATION

MISCELLANEOUS DETAILS

DATE : 6-09
DRAWN BY : J.L.B.
CHECKED BY : R.L.H.

SCALE : NONE
SHEET 89 OF 109 SHEETS B0110094