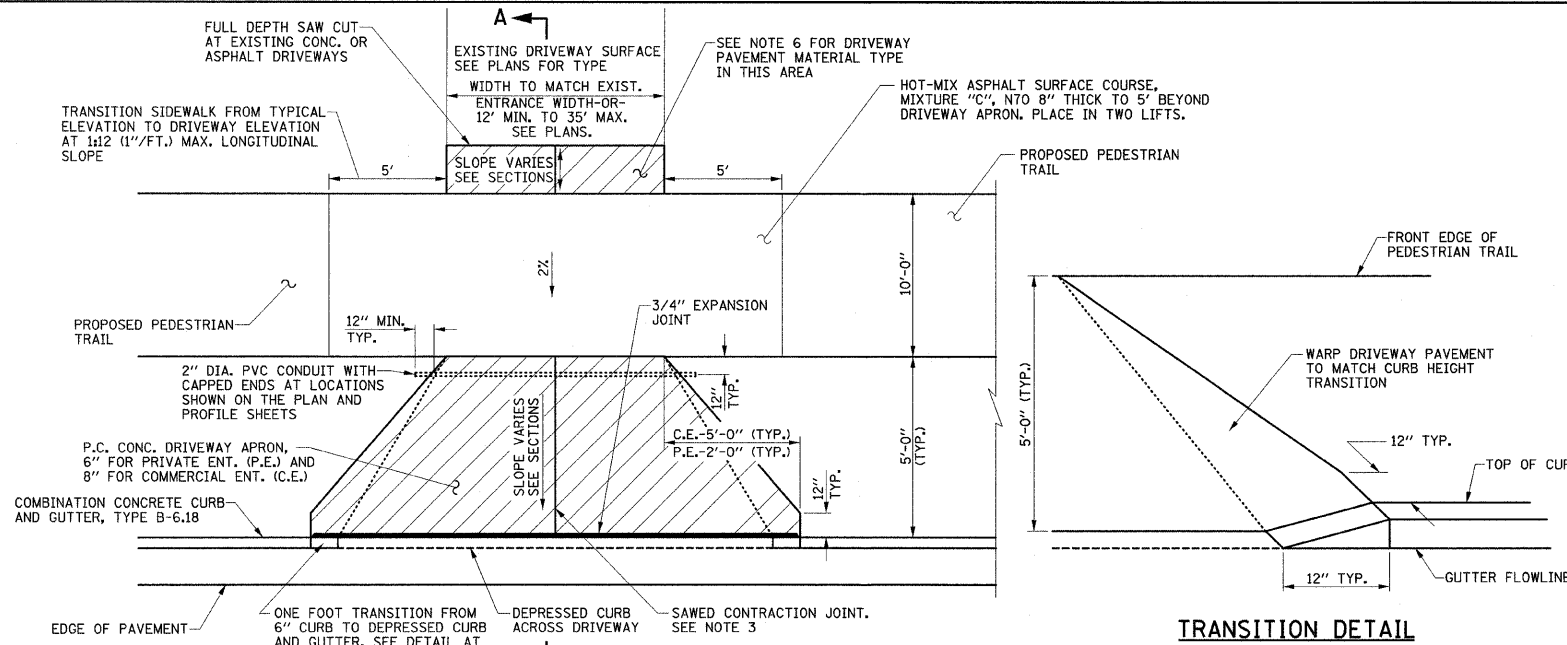


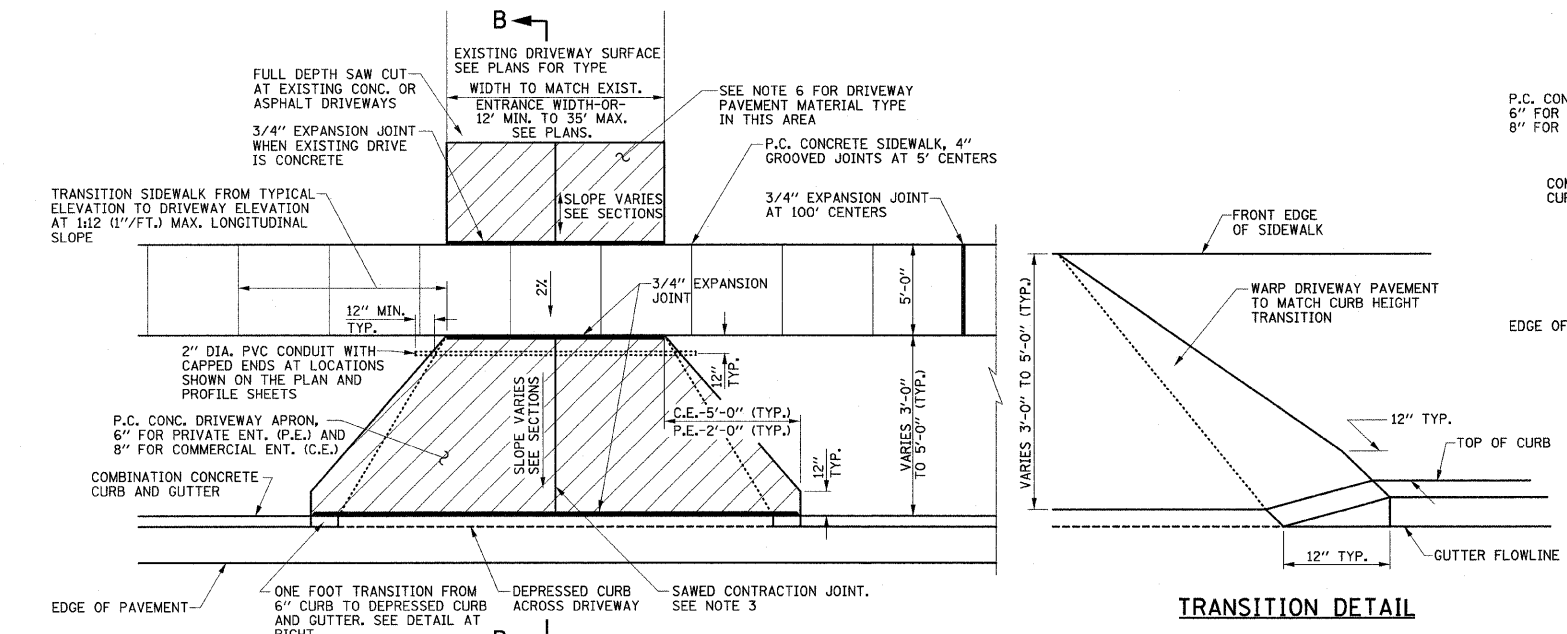
F.A.J. RTE.	SECTION	COUNTY	TOTAL SHEETS	SHEET NO.
6371	93-00295-03-PV	MCLEAN	109	88
STA.		TO STA.		
ILLINOIS F.A. PROJ. NO. M-5227(046)				
CONTRACT NO. 91351				

DRIVEWAY GENERAL NOTES

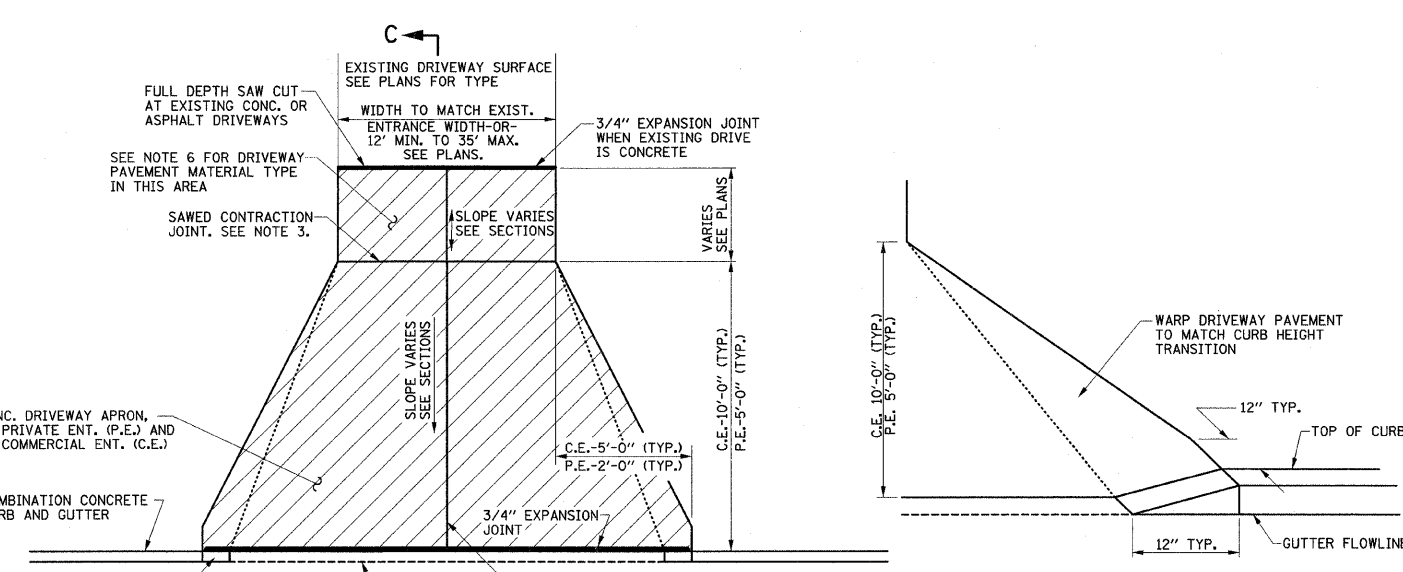
1. THE COST OF CONSTRUCTING THE P.C. CONCRETE SIDEWALK 6" OR 8" THICK THROUGH DRIVEWAYS SHALL BE CONSIDERED INCLUDED IN THE COST OF THE P.C. CONCRETE SIDEWALK 4" AND NO ADDITIONAL COMPENSATION WILL BE ALLOWED.
2. THE COST OF CONSTRUCTING THE THICKER P.C. CONCRETE DRIVEWAY PAVEMENT ADJACENT TO THE COMBINATION CONCRETE CURB AND GUTTER AS SHOWN IN SECTIONS A-A, B-B, & C-C WILL BE CONSIDERED INCLUDED IN THE COST OF THE P.C. CONCRETE DRIVEWAY PAVEMENT AND NO ADDITIONAL COMPENSATION WILL BE ALLOWED.
3. WHEN THE WIDTH OF THE P.C. CONCRETE DRIVEWAY PAVEMENT IS BETWEEN 12' TO 24' A CONTRACTION JOINT SHALL BE PLACED IN THE CENTER OF THE DRIVEWAY. WHEN THE WIDTH OF THE P.C. CONCRETE DRIVEWAY PAVEMENT IS BETWEEN 24' TO 35', TWO CONTRACTION JOINTS EVENLY SPACED SHALL BE PLACED IN THE DRIVEWAY. TRANSVERSE CONTRACTION JOINTS SHALL BE PLACED AT 12' MAXIMUM SPACING.
4. THE MINIMUM WIDTH OF P.C. CONCRETE DRIVEWAY PAVEMENT SHALL BE 12' AND MAXIMUM WIDTH SHALL BE 35'.
5. ALL COST OF CONSTRUCTING THE COMBINATION CONCRETE CURB AND GUTTER AS SHOWN SHALL BE INCLUDED IN THE CONTRACT UNIT PRICE PER FOOT FOR COMBINATION CONCRETE CURB AND GUTTER OF THE TYPE SPECIFIED IN THE PLANS.
6. THE LIMITS, TYPES, AND THICKNESS OF MATERIALS USED FOR THE CONSTRUCTION OF THE PROPOSED DRIVEWAYS BEYOND THE CONCRETE APRONS, PEDESTRIAN TRAIL, OR SIDEWALK SHALL BE AS SHOWN ON THE PLAN AND PROFILE SHEETS.
7. THE 2" DIAMETER CONDUITS SHALL BE INSTALLED AT LOCATIONS SHOWN ON THE PLANS FOR A FUTURE STREET LIGHT SYSTEM TO BE INSTALLED BY OTHERS. THE CONDUITS WILL BE PAID FOR PER FOOT FOR CONDUIT IN TRENCH, 2" DIA., PVC.
8. ALL CONDUITS THAT ARE TO BE LEFT VACANT FOR FUTURE USE SHALL HAVE A 10 GAUGE STRANDED WIRE INSTALLED FOR THE PURPOSE OF LOCATING THE CONDUIT AND SHALL BE INCLUDED IN THE COST OF THE CONDUIT PAY ITEM.



**SECTION A-A
P.C. CONCRETE DRIVEWAY ENTRANCE DETAIL
(WITH PEDESTRIAN TRAIL THROUGH DRIVEWAY)**



**SECTION B-B
P.C. CONCRETE DRIVEWAY ENTRANCE DETAIL
(WITH SIDEWALK THROUGH DRIVEWAY)**



**SECTION C-C
P.C. CONCRETE DRIVEWAY ENTRANCE DETAIL
(WITHOUT SIDEWALK OR PEDESTRIAN TRAIL)**

ILLINOIS DEPARTMENT OF TRANSPORTATION
MISCELLANEOUS DETAILS
DATE : 6-09
DRAWN BY : J.L.B.
CHECKED BY : R.L.H.
SCALE : NONE