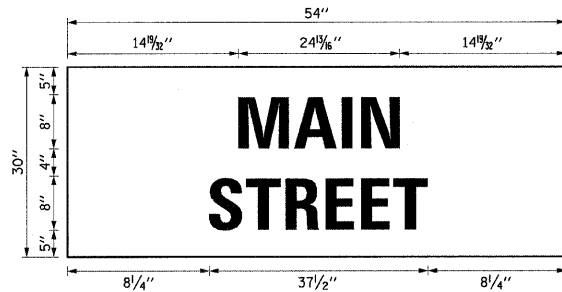
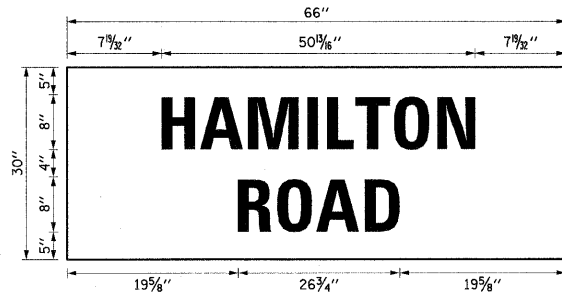
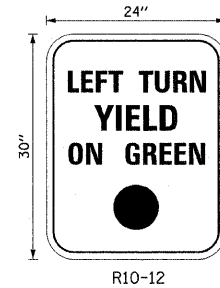


F.A.U. RTE.	SECTION	COUNTY	TOTAL SHEETS	SHEET NO.
6371	93-00295-03-PV	MCLEAN	109	86
STA.		TO STA.		
		ILLINOIS F.A. PROJ. NO. M-5227(046)		
CONTRACT NO. 91351				

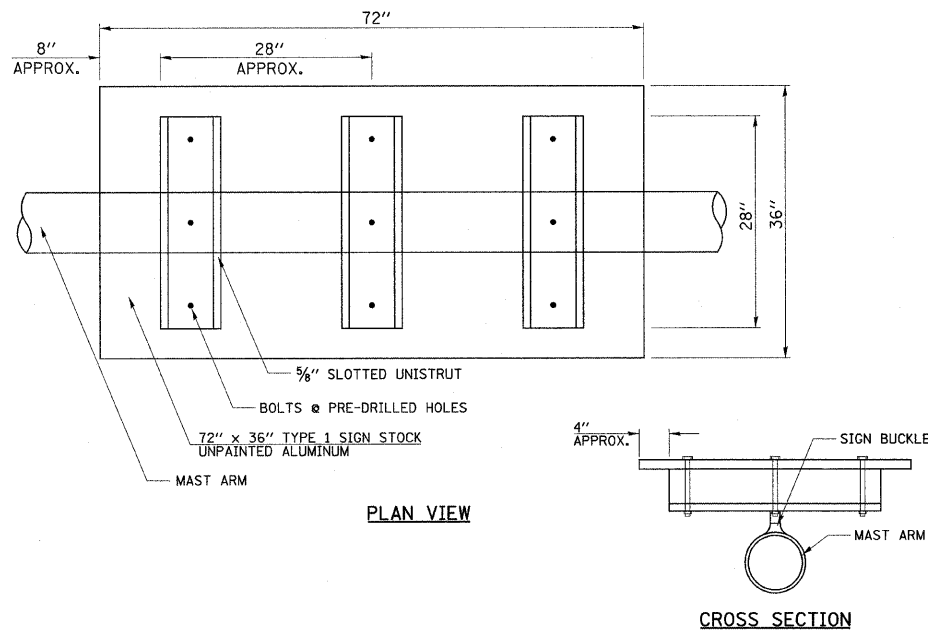
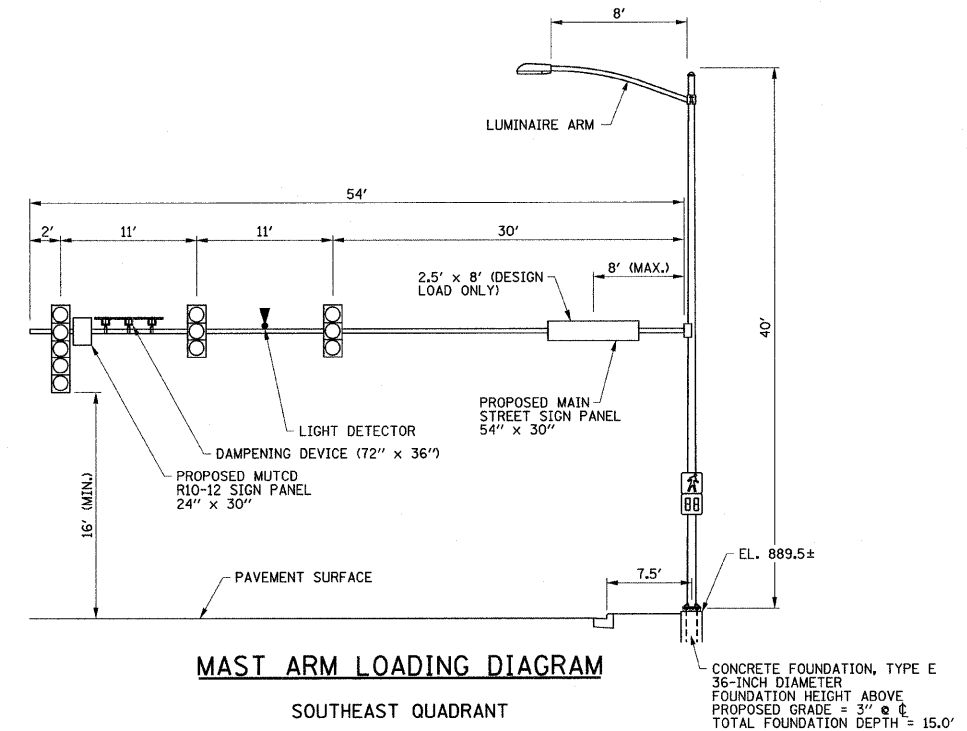
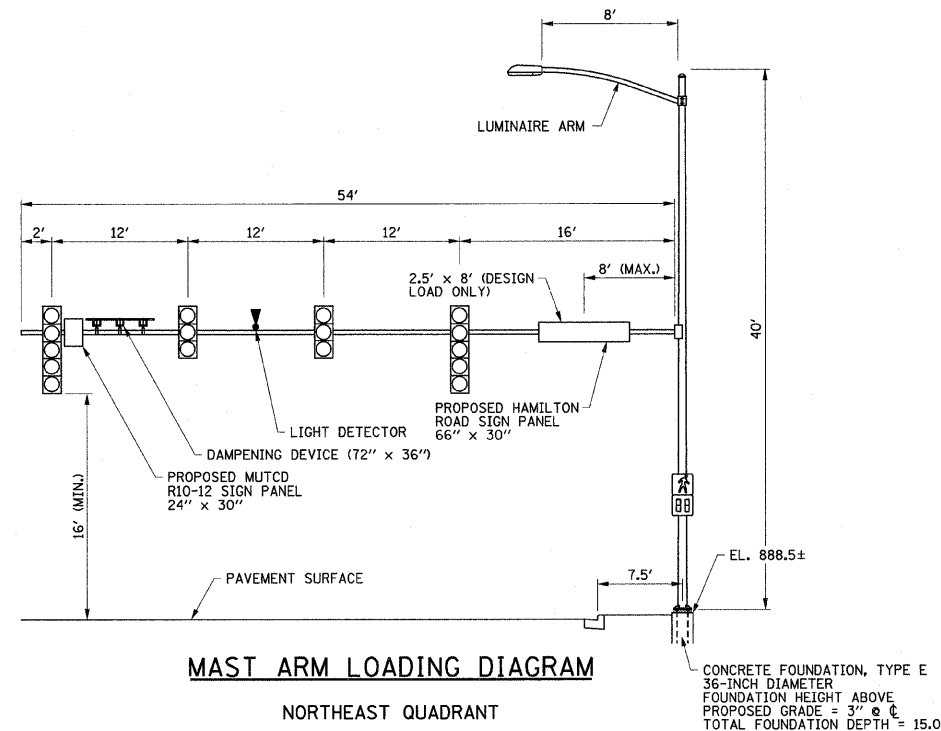


**MAST ARM MOUNTED STREET NAME SIGN DETAILS**  
 SERIES D - 8"  
 TYPE A SHEETING REQUIRED

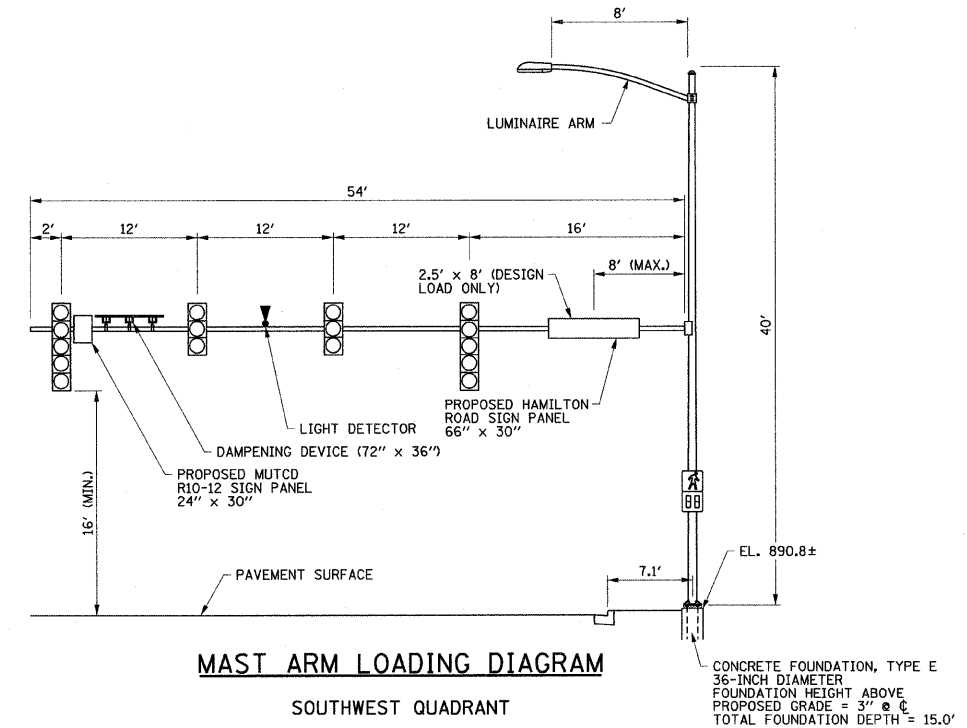
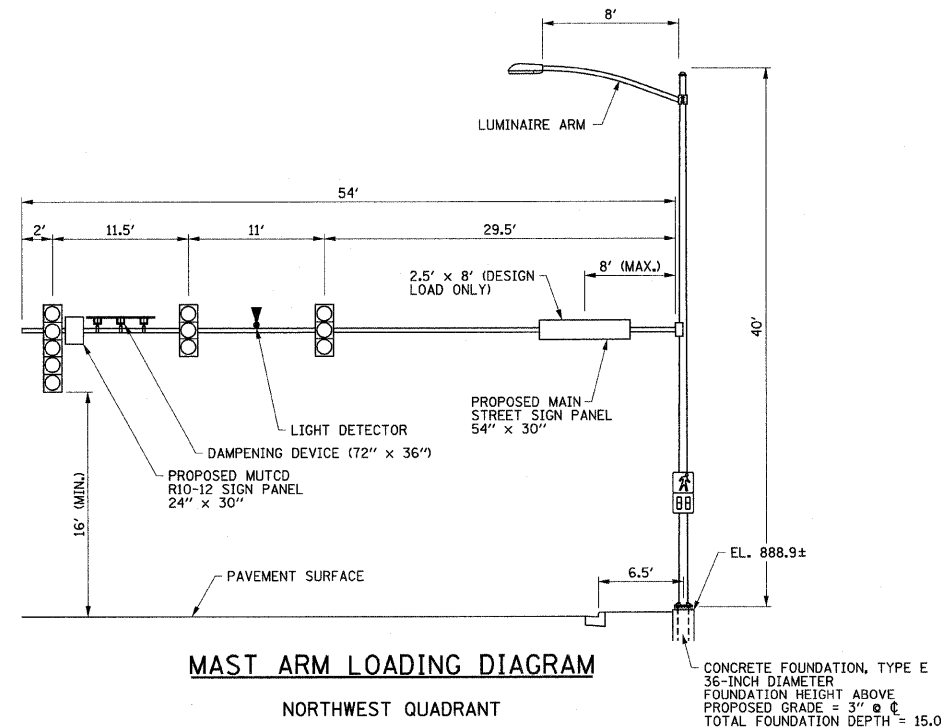


**MAST ARM MOUNTED SIGN DETAILS**  
 MUTCD R10-12

NOTE: AN MUTCD R10-12 SIGN SHALL ALSO BE MOUNTED BELOW EACH BRACKET MOUNTED 5-SECTION HEAD LEFT TURN SIGNAL AS DIRECTED BY THE ENGINEER.



**MAST ARM MOUNTED DAMPENING DEVICE DETAILS**



**MAST ARM LOADING NOTES**

1. THE MAST ARM DAMPENING DEVICE SHALL BE IN ACCORDANCE WITH THE DETAILS SHOWN ON THIS SHEET. THE COST OF THE DAMPENING DEVICE IS INCLUDED IN THE COST OF THE MAST ARM PAY ITEM.
2. ALL SIGNAL HEADS SHALL HAVE LOUVERED BACKPLATES.

ILLINOIS DEPARTMENT OF TRANSPORTATION  
 TRAFFIC SIGNAL PLANS  
 HAMILTON ROAD & US ROUTE 51  
 MAST ARM DETAILS

SCALE : NONE  
 DATE : 6-09  
 DRAWN BY : J.A.J.  
 CHECKED BY : R.L.H.