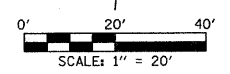


F.A.U. RTE.	SECTION	COUNTY	TOTAL SHEETS	SHEET NO.
6371	93-00295-03-PV	MCLEAN	109	75
STA. 238+00.00		TO STA. 243+00.00		
ILLINOIS F.A. PROJ. NO. M-5227(046)				
CONTRACT NO. 91351				

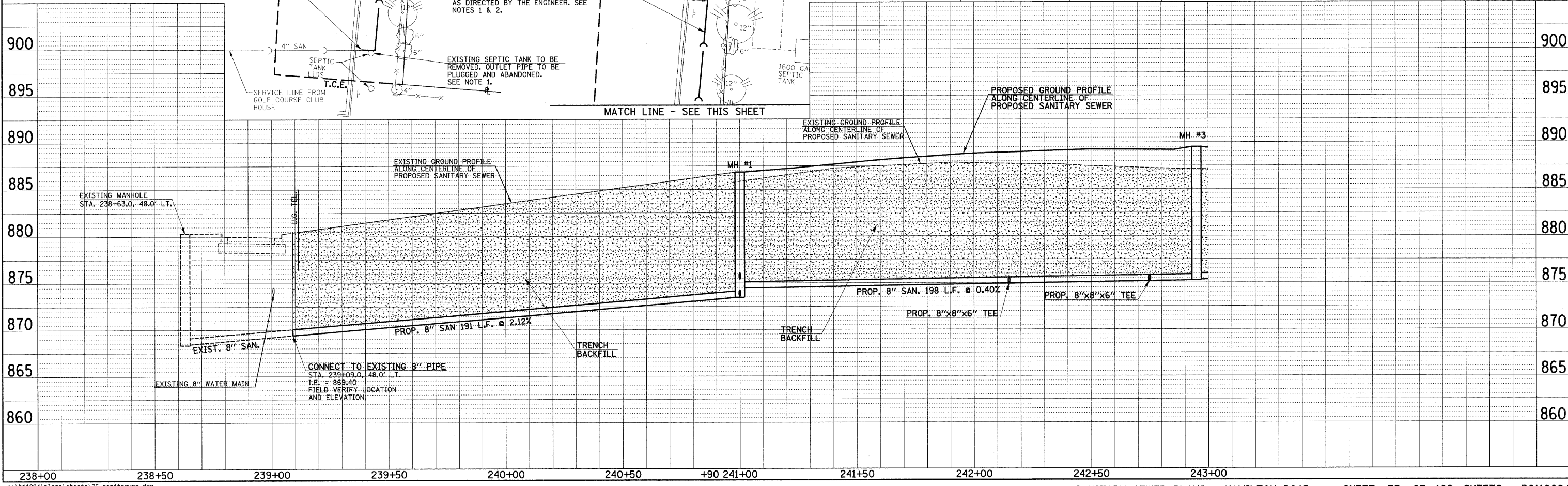
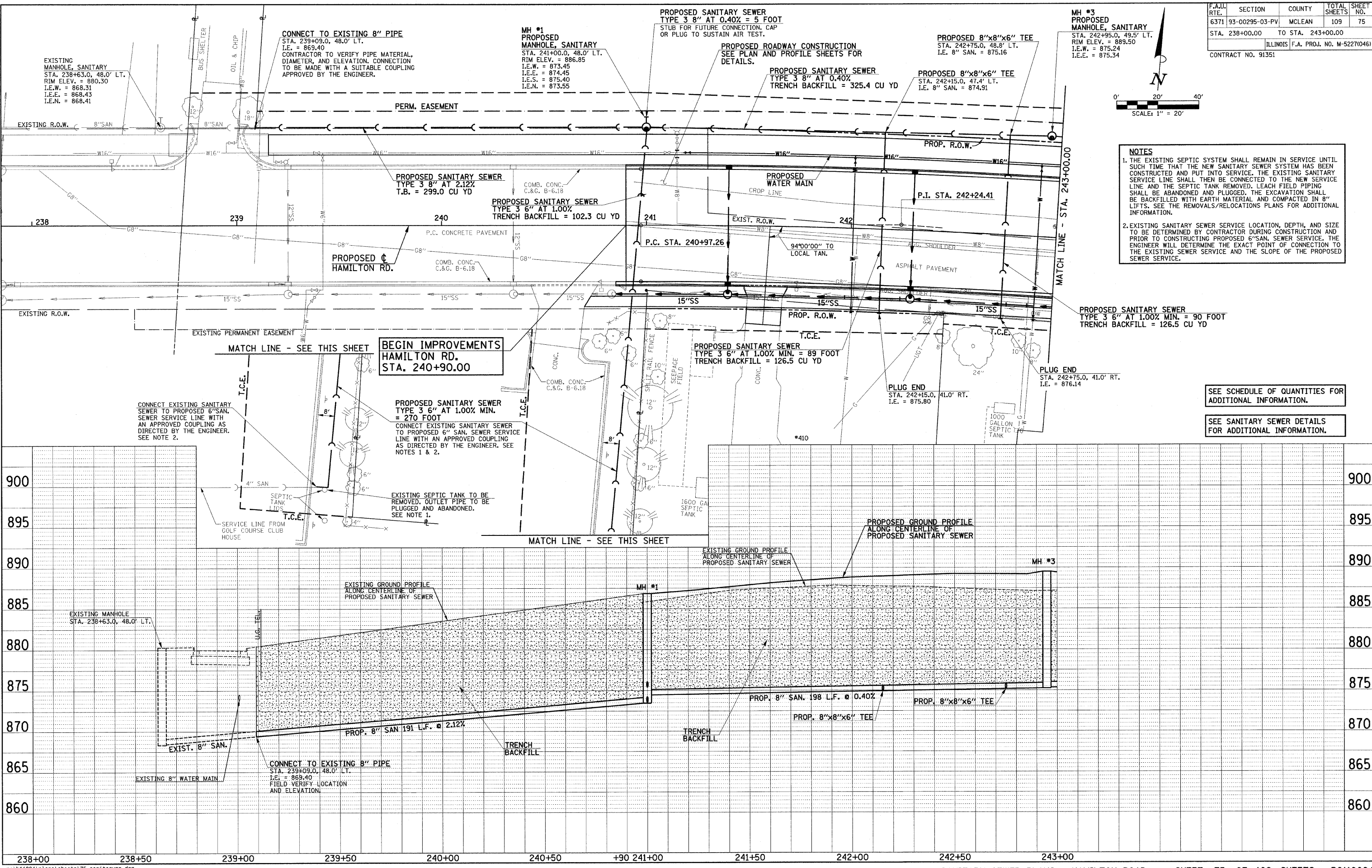


**NOTES**

1. THE EXISTING SEPTIC SYSTEM SHALL REMAIN IN SERVICE UNTIL SUCH TIME THAT THE NEW SANITARY SEWER SYSTEM HAS BEEN CONSTRUCTED AND PUT INTO SERVICE. THE EXISTING SANITARY SERVICE LINE SHALL THEN BE CONNECTED TO THE NEW SERVICE LINE AND THE SEPTIC TANK REMOVED. LEACH FIELD PIPING SHALL BE ABANDONED AND PLUGGED. THE EXCAVATION SHALL BE BACKFILLED WITH EARTH MATERIAL AND COMPACTED IN 8" LIFTS. SEE THE REMOVALS/RELOCATIONS PLANS FOR ADDITIONAL INFORMATION.
2. EXISTING SANITARY SEWER SERVICE LOCATION, DEPTH, AND SIZE TO BE DETERMINED BY CONTRACTOR DURING CONSTRUCTION AND PRIOR TO CONSTRUCTING PROPOSED 6" SAN. SEWER SERVICE. THE ENGINEER WILL DETERMINE THE EXACT POINT OF CONNECTION TO THE EXISTING SEWER SERVICE AND THE SLOPE OF THE PROPOSED SEWER SERVICE.

SEE SCHEDULE OF QUANTITIES FOR ADDITIONAL INFORMATION.

SEE SANITARY SEWER DETAILS FOR ADDITIONAL INFORMATION.



DATE	
BY	
PLANNED	
DESIGNED	
CHECKED	
IN CHARGE	
NO.	

DATE	
BY	
PLANNED	
DESIGNED	
CHECKED	
IN CHARGE	
NO.	