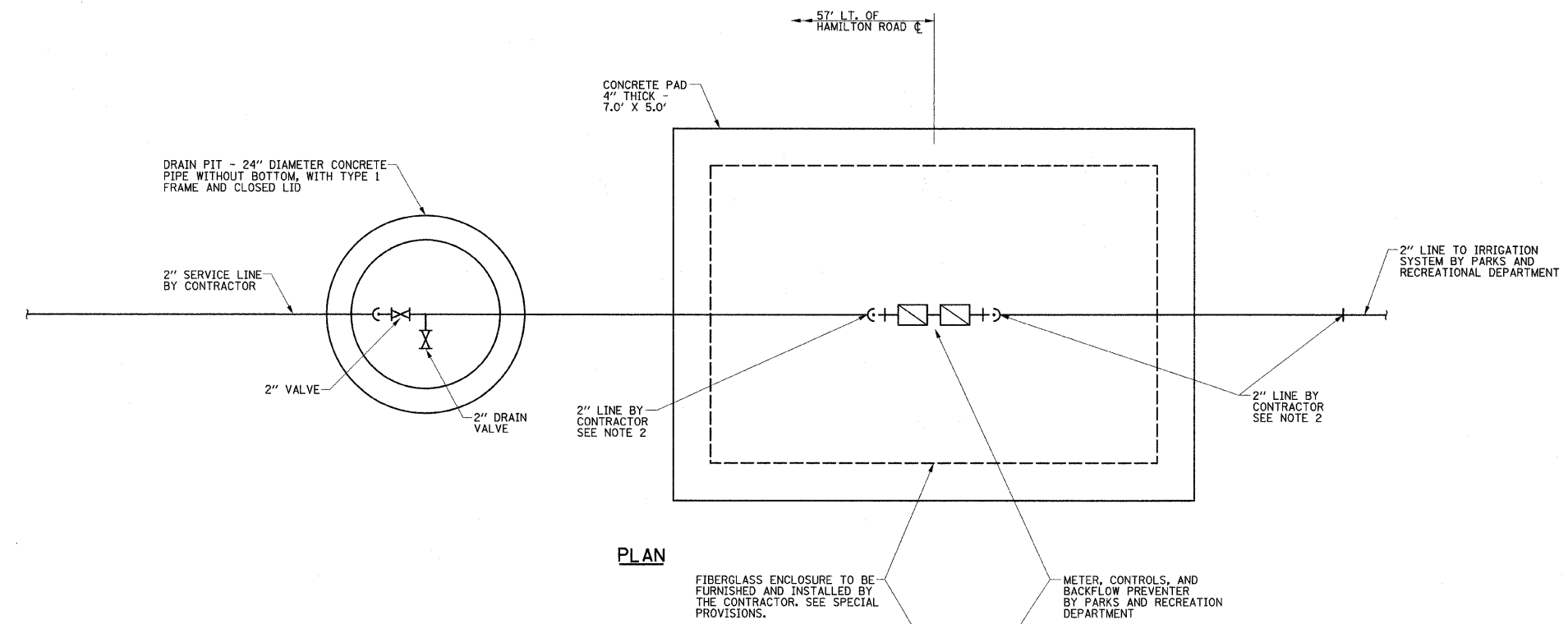
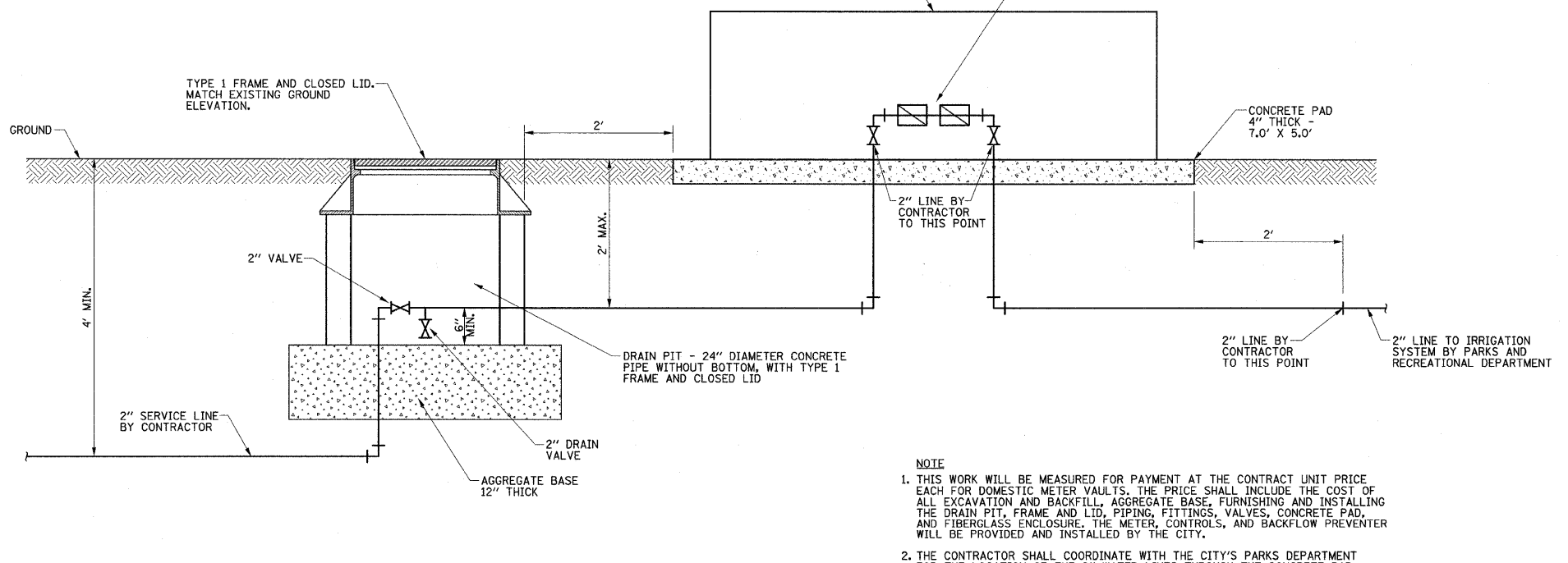


| | | | | |
|-------------------------------------|----------------|---------|--------------|-----------|
| F.A.U. RTE. | SECTION | COUNTY | TOTAL SHEETS | SHEET NO. |
| 6371 | 93-00295-03-PV | MCLEAN | 109 | 74 |
| STA. | | TO STA. | | |
| ILLINOIS F.A. PROJ. NO. M-5227(046) | | | | |
| CONTRACT NO. 91351 | | | | |



PLAN

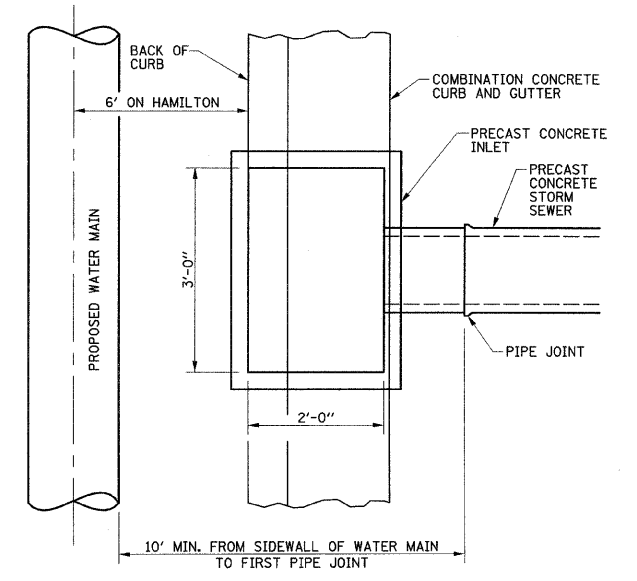


ELEVATION

DOMESTIC METER VAULT DETAIL
STA. 246+55 LT.

NOTE

1. THIS WORK WILL BE MEASURED FOR PAYMENT AT THE CONTRACT UNIT PRICE EACH FOR DOMESTIC METER VAULTS. THE PRICE SHALL INCLUDE THE COST OF ALL EXCAVATION AND BACKFILL, AGGREGATE BASE, FURNISHING AND INSTALLING THE DRAIN PIT, FRAME AND LID, PIPING, FITTINGS, VALVES, CONCRETE PAD, AND FIBERGLASS ENCLOSURE, THE METER, CONTROLS, AND BACKFLOW PREVENTER WILL BE PROVIDED AND INSTALLED BY THE CITY.
2. THE CONTRACTOR SHALL COORDINATE WITH THE CITY'S PARKS DEPARTMENT FOR THE LOCATION OF THE 2" WATER LINES THROUGH THE CONCRETE PAD.



WATER/SEWER SEPARATION DETAIL

NOTES

1. THIS DETAIL IS TO SATISFY THE REQUIREMENTS FOR WATER AND SEWER SEPARATION SO THAT NO STORM SEWER JOINTS ARE WITHIN THE 10 FOOT HORIZONTAL SEPARATION LIMITS.
2. THIS WORK WILL NOT BE PAID FOR SEPARATELY AND SHALL BE INCLUDED IN THE COST OF THE STORM SEWERS.

ILLINOIS DEPARTMENT OF TRANSPORTATION

WATER MAIN DETAILS

DATE : 6-09
DRAWN BY : J.L.B.
CHECKED BY : R.L.H.
SCALE : NONE