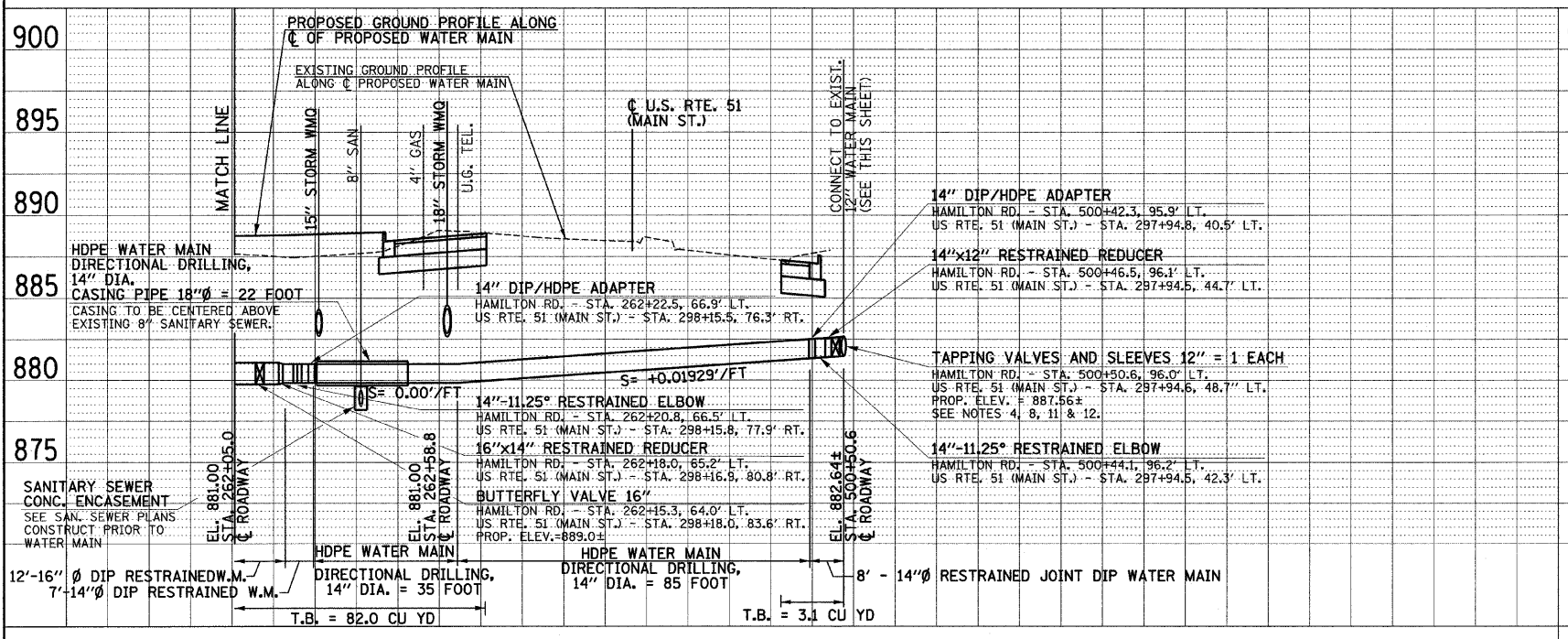
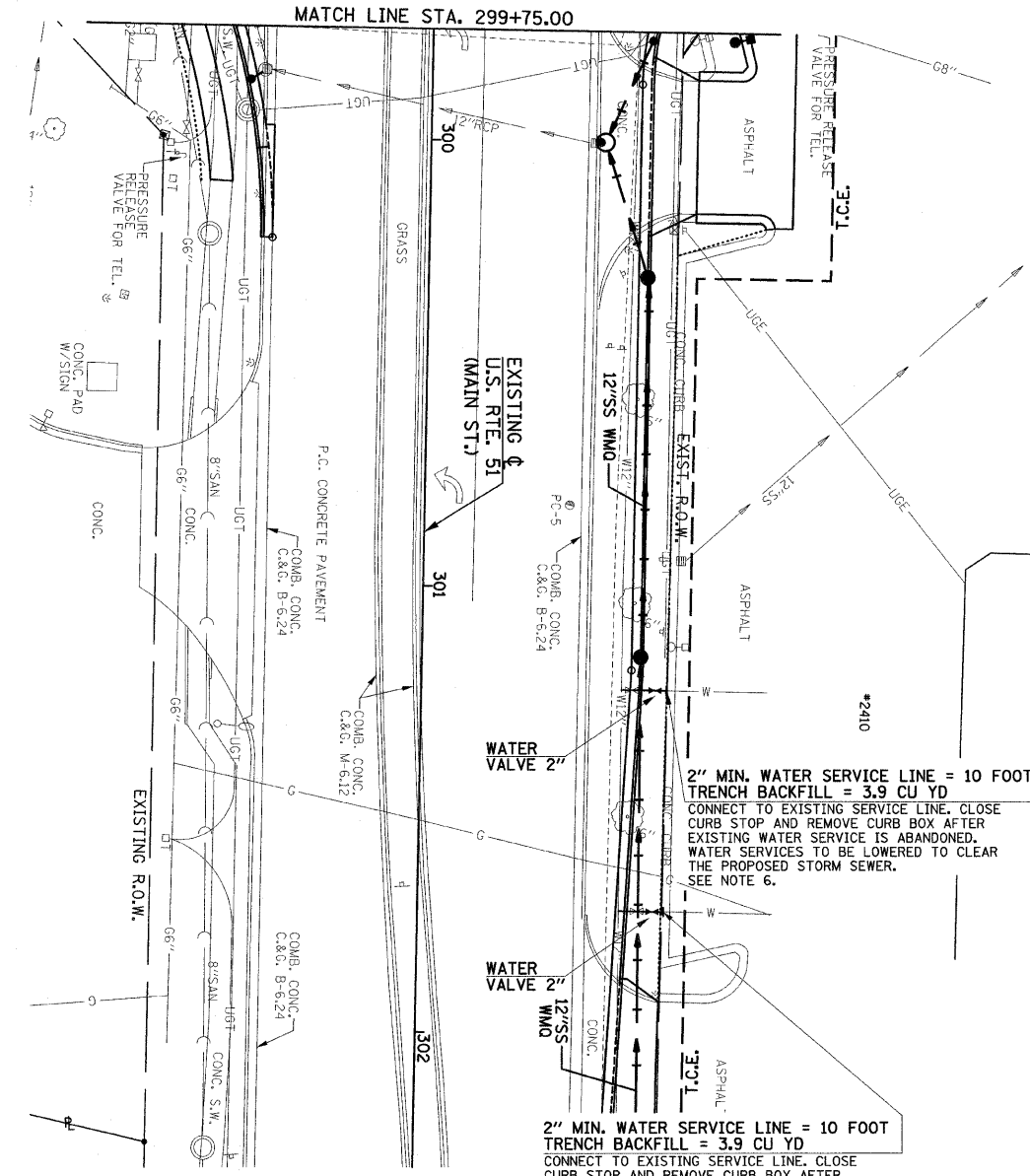
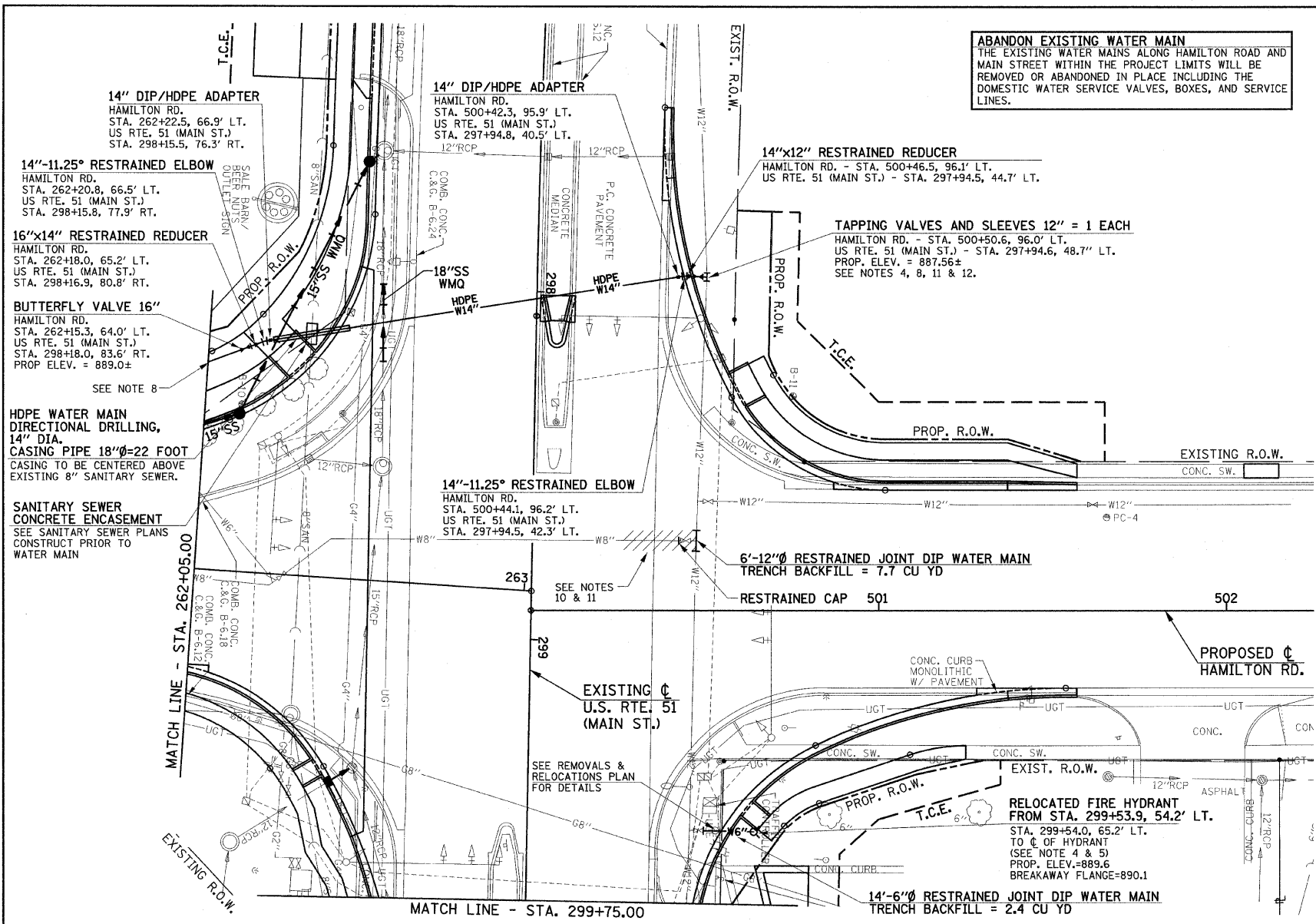
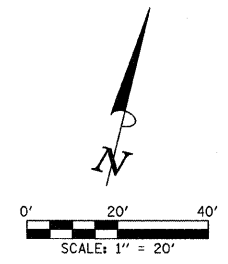


F.A.U. RTE.	SECTION	COUNTY	TOTAL SHEETS	SHEET NO.
6371	93-00295-03-PV	MCLEAN	109	72
STA. 262+05.00		TO STA. 502+00.00		
ILLINOIS F.A. PROJ. NO. M-5227(046)				
CONTRACT NO. 91351				

THE PROPOSED ELEVATIONS SHOWN FOR THE FIRE HYDRANTS AND THE WATER VALVES ARE THE FINISHED GRADE SURFACE ELEVATION ADJACENT TO THE HYDRANT OR THE VALVE. THE HYDRANT BREAKAWAY FLANGE ELEVATION IS 4" TO 6" ABOVE THE GROUND ELEVATION.

A MINIMUM OF 20 FEET OF RESTRAINED JOINT PIPE IS REQUIRED ON EACH SIDE OF 16" BUTTERFLY VALVES.

ABANDON EXISTING WATER MAIN
 THE EXISTING WATER MAINS ALONG HAMILTON ROAD AND MAIN STREET WITHIN THE PROJECT LIMITS WILL BE REMOVED OR ABANDONED IN PLACE INCLUDING THE DOMESTIC WATER SERVICE VALVES, BOXES, AND SERVICE LINES.



- NOTES**
- ELEVATIONS ARE TOP OF PIPE FOR WATER MAIN.
 - IT WILL BE NECESSARY TO CONSTRUCT THE WATER MAIN IN VARIOUS STAGES. SEE THE TRAFFIC CONTROL AND MAINTENANCE OF TRAFFIC PLANS FOR STAGING PLAN.
 - ALL 16" BUTTERFLY VALVE OPERATORS SHALL BE PLACED ON SOUTH SIDE OF WATER MAIN TO AVOID PLACEMENT WITHIN THE PROPOSED BIKE TRAIL.
 - CONTRACTOR TO VERIFY DEPTH PRIOR TO CONSTRUCTION. WHEN CONNECTIONS ARE TO BE MADE TO EXISTING PIPING AND FITTINGS, THE LOCATION AND ELEVATION OF THE EXISTING PIPING SHALL BE FIELD DETERMINED AND THE APPROPRIATE ADJUSTMENTS MADE.
 - CONTRACTOR TO PROVIDE ALL PIPING & GASKETS, FITTINGS, AND HARDWARE NECESSARY TO CONNECT TO EXISTING WATER MAIN.
 - CONTRACTOR TO FIELD VERIFY EXISTING WATER SERVICES ALONG HAMILTON RD. CONTRACTOR TO PROVIDE 1" MINIMUM WATER SERVICE LINE, VALVES AND NECESSARY FITTINGS AND HARDWARE FOR CONNECTION TO RESIDENTIAL SERVICES AND 2" MINIMUM WATER SERVICE LINE, VALVES AND NECESSARY FITTINGS AND HARDWARE FOR CONNECTION TO COMMERCIAL SERVICES.
 - SEE THE REMOVAL/RELOCATION PLANS FOR THE VARIOUS PAY ITEMS TO BE ABANDONED, REMOVED, OR ADJUSTED.
 - CONTRACTOR TO PROVIDE FOR FLUSHING AND SAMPLING TAPS EVERY 1200 FEET AND AT EVERY CONNECTION.
 - PIPE SLOPES SHALL GOVERN UNLESS MINIMUM COVER SHOWN CANNOT BE MET.
 - REMOVE EXISTING 8" TAPPING VALVE AT STA. 500+44, 20' LT. AND INSTALL A RESTRAINED CAP. ABANDON EXISTING 8" WATER MAIN WEST OF STA. 500+44. REMOVE AND REPLACE 6 FEET OF EXISTING 12" WATER MAIN AT THE TAPPING VALVE LOCATION. SEE STAGE CONSTRUCTION AND MAINTENANCE OF TRAFFIC PLAN.
 - DOWN TIME FOR THE EXISTING 12" WATER MAIN SHALL BE LIMITED TO A MAXIMUM OF 4 HOURS. THE CONTRACTOR SHALL COORDINATE THE WORK WITH THE ENGINEER TO MINIMIZE THE INCONVENIENCE TO THE BUSINESSES BEING SERVED AND MAY REQUIRE DOING THE WORK AT NIGHT. NOTIFY THE ENGINEER AT LEAST TWO DAYS IN ADVANCE OF SHUTTING DOWN THE WATER MAIN.
 - CONNECT TO EXISTING 12" WATER MAIN BY SIDE-TAPPING AT STA. 500+50.6, 96.9' LT. (HAMILTON RD.), STA. 297+93.7, 48.7' LT. (US RTE. 51 - MAIN ST.) THE CITY OF BLOOMINGTON WATER DEPT. WILL MAKE THE TAP.

PLAN	DATE	BY	CHECKED

PROFILE	DATE	BY	CHECKED

p:\b11094\plans\sheet167-waterpp.dgn
 6/19/2009 9:00:05 AM