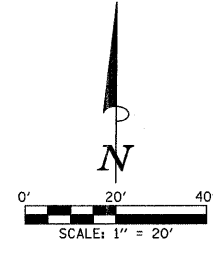


F.A.U. RTE.	SECTION	COUNTY	TOTAL SHEETS	SHEET NO.
6371	93-00295-03-PV	MCLEAN	109	71
STA. 258+00.00		TO STA. 262+05.00		
ILLINOIS F.A. PROJ. NO. M-5227(046)				
CONTRACT NO. 91351				

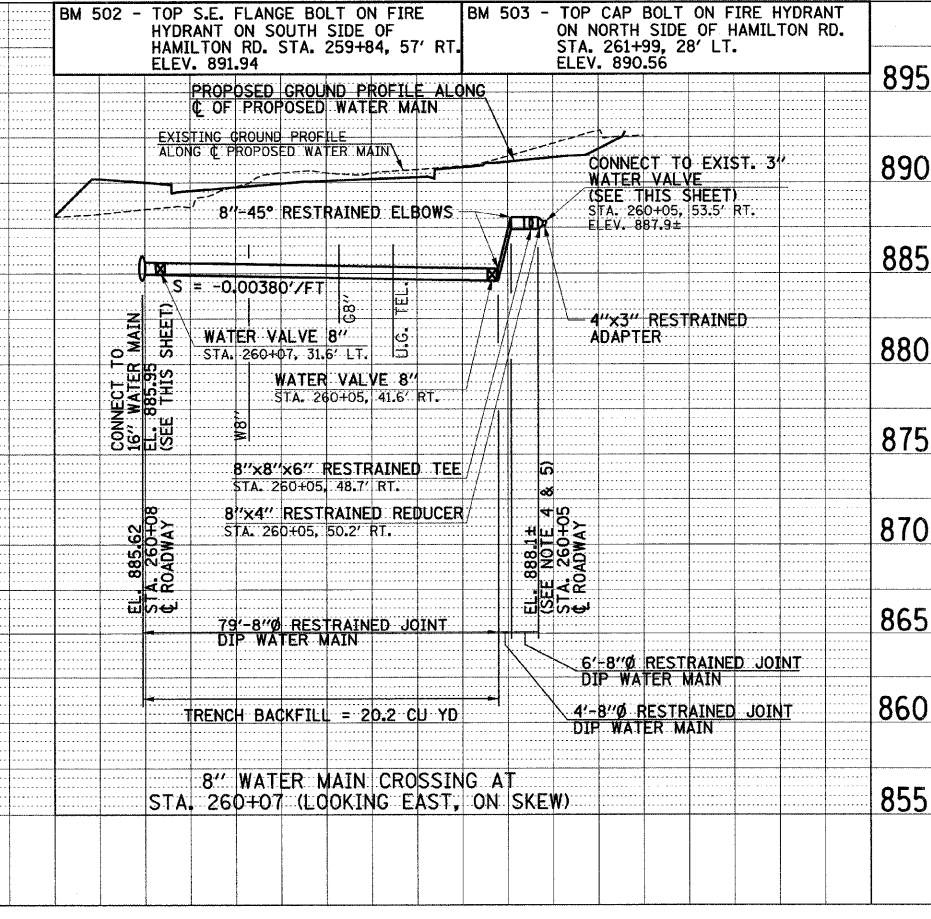
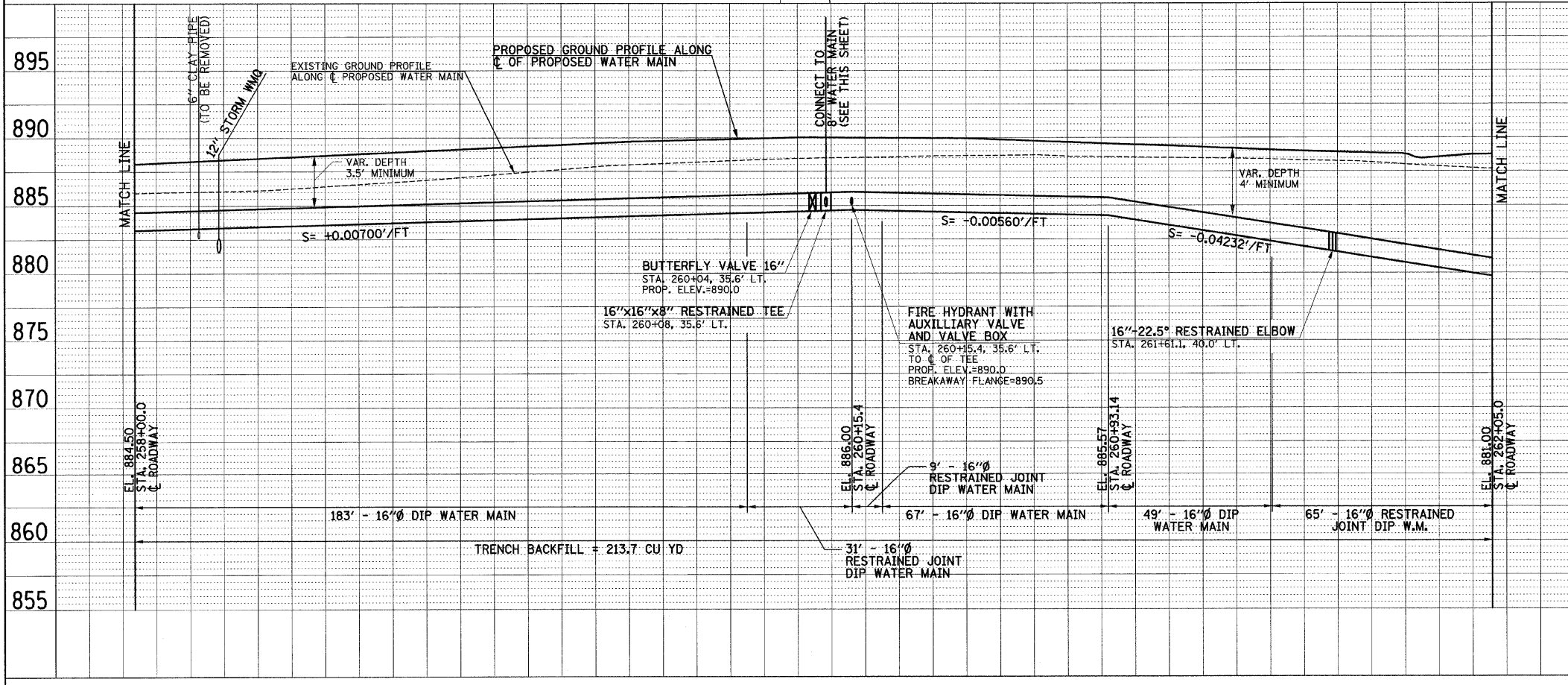
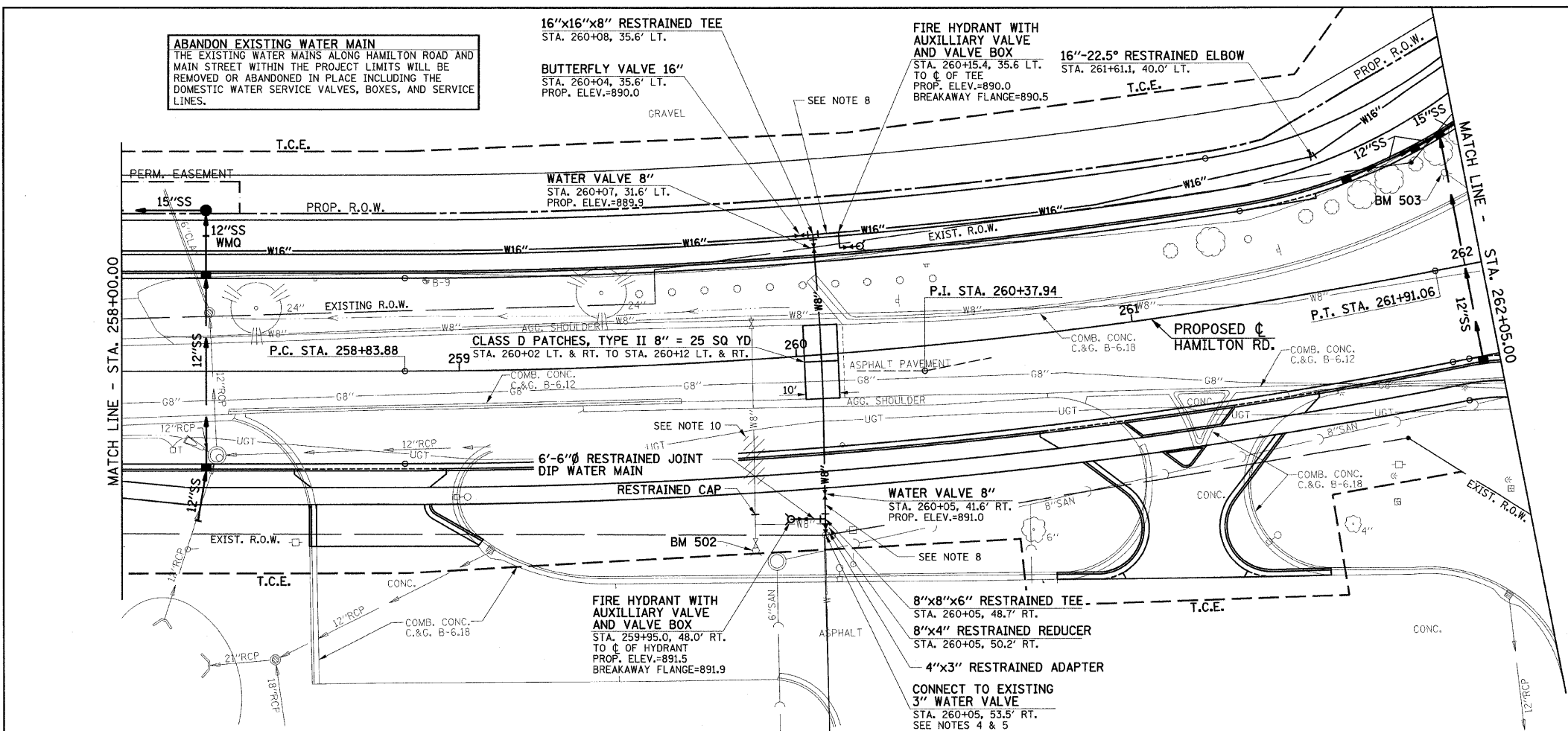
THE PROPOSED ELEVATIONS SHOWN FOR THE FIRE HYDRANTS AND THE WATER VALVES ARE THE FINISHED GRADE SURFACE ELEVATION ADJACENT TO THE HYDRANT OR THE VALVE. THE HYDRANT BREAKAWAY FLANGE ELEVATION IS 4" TO 6" ABOVE THE GROUND ELEVATION.

*A MINIMUM OF 20 FEET OF RESTRAINED JOINT PIPE IS REQUIRED ON EACH SIDE OF 16" BUTTERFLY VALVES.

- NOTES
- ELEVATIONS ARE TOP OF PIPE FOR WATER MAIN.
 - IT WILL BE NECESSARY TO CONSTRUCT THE WATER MAIN IN VARIOUS STAGES. SEE THE TRAFFIC CONTROL AND MAINTENANCE OF TRAFFIC PLANS FOR STAGING PLAN.
 - ALL 16" BUTTERFLY VALVE OPERATORS SHALL BE PLACED ON SOUTH SIDE OF WATER MAIN TO AVOID PLACEMENT WITHIN THE PROPOSED BIKE TRAIL.
 - CONTRACTOR TO VERIFY DEPTH PRIOR TO CONSTRUCTION. WHEN CONNECTIONS ARE TO BE MADE TO EXISTING PIPING AND FITTINGS, THE LOCATION AND ELEVATION OF THE EXISTING PIPING SHALL BE FIELD DETERMINED AND THE APPROPRIATE ADJUSTMENTS MADE.
 - CONTRACTOR TO PROVIDE ALL PIPING & GASKETS, FITTINGS, AND HARDWARE NECESSARY TO CONNECT TO EXISTING WATER MAIN.
 - CONTRACTOR TO FIELD VERIFY EXISTING WATER SERVICES ALONG HAMILTON RD. CONTRACTOR TO PROVIDE 1" MINIMUM WATER SERVICE LINE, VALVES AND NECESSARY FITTINGS AND HARDWARE FOR CONNECTION TO RESIDENTIAL SERVICES.
 - SEE THE REMOVAL/RELOCATION PLANS FOR THE VARIOUS PAY ITEMS TO BE ABANDONED, REMOVED, OR ADJUSTED.
 - CONTRACTOR TO PROVIDE FOR FLUSHING AND SAMPLING TAPS EVERY 1200 FEET AND AT EVERY CONNECTION.
 - PIPE SLOPES SHALL GOVERN UNLESS MINIMUM COVER SHOWN CANNOT BE MET.
 - REMOVE THE EXISTING 8" TEE AT STA. 259+85, 49' RT. INSTALL A RESTRAINED CAP AND ABANDON THE EXISTING 8" WATER MAIN NORTH OF THE EXISTING 8" TEE. THE EXISTING FIRE HYDRANT SHALL BE REMOVED AND BECOME THE PROPERTY OF HUCK'S. SEE STAGE CONSTRUCTION AND MAINTENANCE OF TRAFFIC PLAN.



DATE	BY
DATE	BY
DATE	BY
DATE	BY
DATE	BY



DATE	BY
DATE	BY
DATE	BY
DATE	BY
DATE	BY