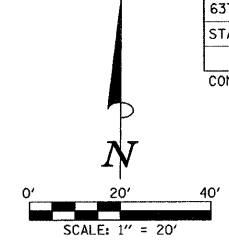


F.A.U. RTE.	SECTION	COUNTY	TOTAL SHEETS	SHEET NO.
6371	93-00295-03-PV	MCLEAN	109	68
STA. 243+00.00		TO STA. 248+00.00		
ILLINOIS F.A. PROJ. NO. M-5227(046)				
CONTRACT NO. 91351				



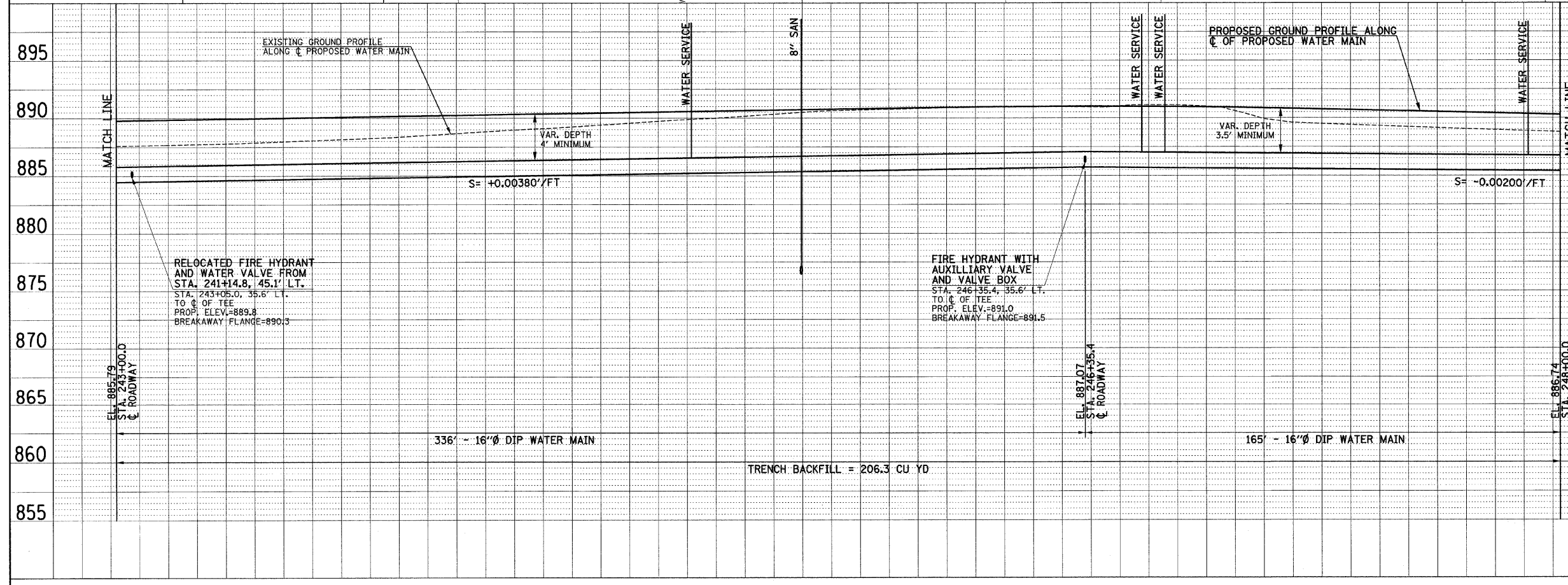
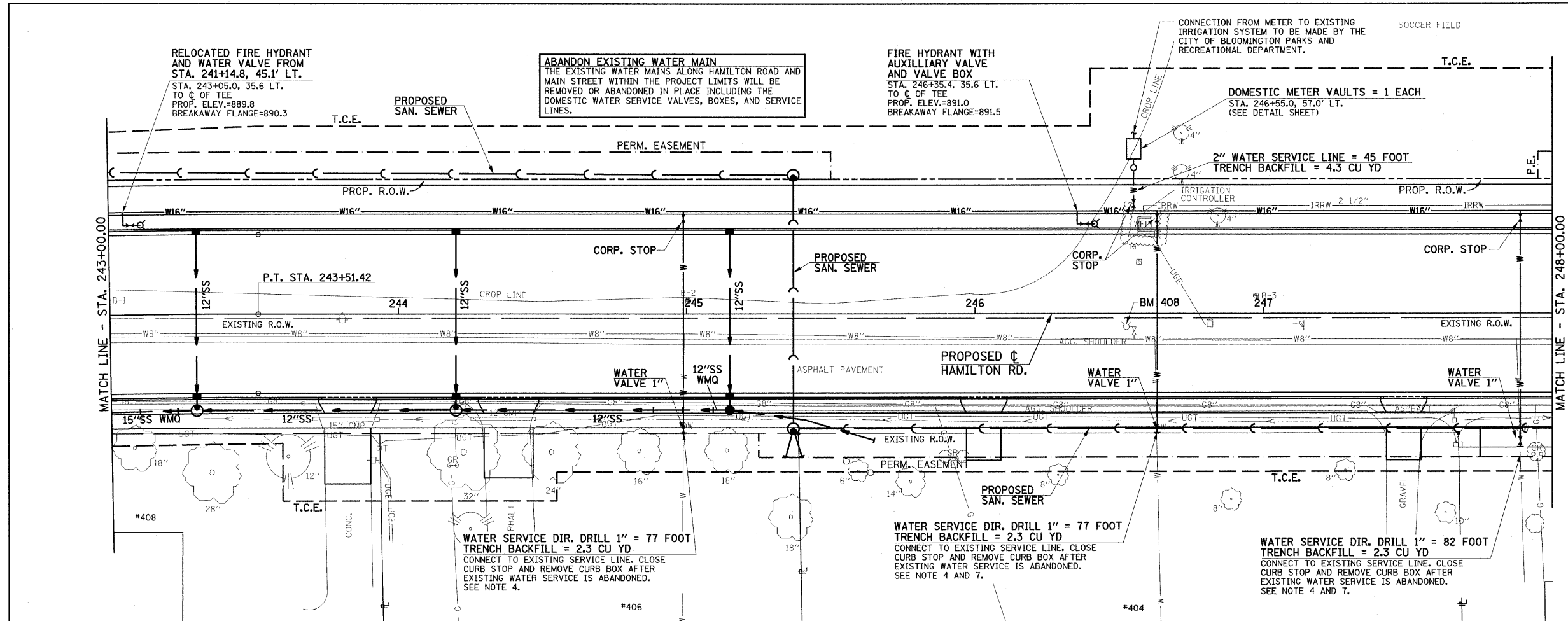
THE PROPOSED ELEVATIONS SHOWN FOR THE FIRE HYDRANTS AND THE WATER VALVES ARE THE FINISHED GRADE SURFACE ELEVATION ADJACENT TO THE HYDRANT OR THE VALVE. THE HYDRANT BREAKAWAY FLANGE ELEVATION IS 4" TO 6" ABOVE THE GROUND ELEVATION.

*A MINIMUM OF 20 FEET OF RESTRAINED JOINT PIPE IS REQUIRED ON EACH SIDE OF 16" BUTTERFLY VALVES.

- NOTES
- ELEVATIONS ARE TOP OF PIPE FOR WATER MAIN.
 - IT WILL BE NECESSARY TO CONSTRUCT THE WATER MAIN IN VARIOUS STAGES. SEE THE TRAFFIC CONTROL AND MAINTENANCE OF TRAFFIC PLANS FOR STAGING PLAN.
 - ALL 16" BUTTERFLY VALVE OPERATORS SHALL BE PLACED ON SOUTH SIDE OF WATER MAIN TO AVOID PLACEMENT WITHIN THE PROPOSED BIKE TRAIL.
 - CONTRACTOR TO FIELD VERIFY EXISTING WATER SERVICES ALONG HAMILTON RD. CONTRACTOR TO PROVIDE 1" MINIMUM WATER SERVICE LINE, VALVES AND NECESSARY FITTINGS AND HARDWARE FOR CONNECTION TO RESIDENTIAL SERVICES AND 2" MINIMUM WATER SERVICE LINE, VALVES AND NECESSARY FITTINGS AND HARDWARE FOR CONNECTION TO COMMERCIAL SERVICES.
 - SEE THE REMOVAL/RELOCATION PLANS FOR THE VARIOUS PAY ITEMS TO BE ABANDONED, REMOVED, OR ADJUSTED.
 - CONTRACTOR TO PROVIDE FOR FLUSHING AND SAMPLING TAPS EVERY 1200 FEET AND AT EVERY CONNECTION.
 - WATER LINE TO BE 18" MIN. ABOVE TOP OF SANITARY SEWER.
 - PIPE SLOPES SHALL GOVERN UNLESS MINIMUM COVER SHOWN CANNOT BE MET.

DATE	BY

DATE	BY



ELEVATION (FT)	STATIONING	DESCRIPTION
895	246+53.8'	BM 408 - TOP CAP BOLT ON FIRE HYDRANT ON NORTH SIDE OF HAMILTON RD. STA. 246+53, 8' RT. ELEV. 894.11
895	243+00.00	RELOCATED FIRE HYDRANT AND WATER VALVE FROM STA. 241+14.8, 45.1' LT. TO C. OF TEE. PROP. ELEV.=889.8. BREAKAWAY FLANGE=890.3
895	246+35.4	FIRE HYDRANT WITH AUXILIARY VALVE AND VALVE BOX. STA. 246+35.4, 35.6' LT. TO C. OF TEE. PROP. ELEV.=891.0. BREAKAWAY FLANGE=891.5
860	243+00.00 - 248+00.00	336' - 16" Ø DIP WATER MAIN. TRENCH BACKFILL = 206.3 CU YD
860	246+00.00 - 248+00.00	165' - 16" Ø DIP WATER MAIN