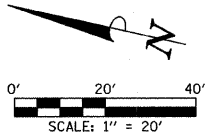
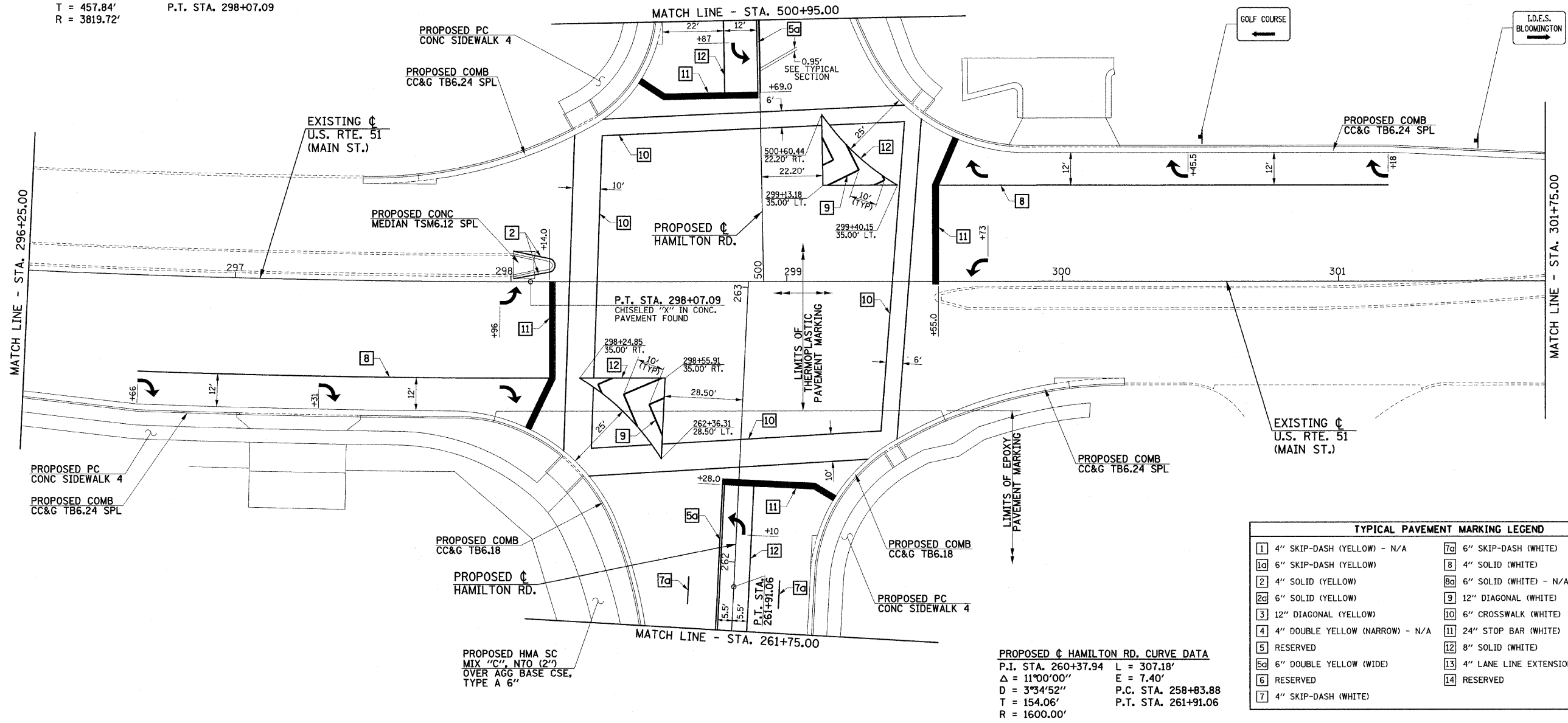


F.A.U. RTE.	SECTION	COUNTY	TOTAL SHEETS	SHEET NO.
6371	93-00295-03-PV	MCLEAN	109	62
STA. 296+25.00 TO STA. 301+75.00				
ILLINOIS F.A. PROJ. NO. M-5227(046)				
CONTRACT NO. 91351				



EXISTING ϕ U.S. RTE. 51 (MAIN ST.)
 CURVE DATA
 P.I. STA. 293+53.59 L = 911.34'
 $\Delta = 13^{\circ}40'12''$ E = 27.34'
 D = 1^{\circ}30'00'' P.C. STA. 288+95.75
 T = 457.84' P.T. STA. 298+07.09
 R = 3819.72'



TYPICAL PAVEMENT MARKING LEGEND			
1	4" SKIP-DASH (YELLOW) - N/A	7c	6" SKIP-DASH (WHITE)
1a	6" SKIP-DASH (YELLOW)	8	4" SOLID (WHITE)
2	4" SOLID (YELLOW)	8a	6" SOLID (WHITE) - N/A
2a	6" SOLID (YELLOW)	9	12" DIAGONAL (WHITE)
3	12" DIAGONAL (YELLOW)	10	6" CROSSWALK (WHITE)
4	4" DOUBLE YELLOW (NARROW) - N/A	11	24" STOP BAR (WHITE)
5	RESERVED	12	8" SOLID (WHITE)
5a	6" DOUBLE YELLOW (WIDE)	13	4" LANE LINE EXTENSIONS (WHITE) - N/A
6	RESERVED	14	RESERVED
7	4" SKIP-DASH (WHITE)		

PROPOSED ϕ HAMILTON RD. CURVE DATA
 P.I. STA. 260+37.94 L = 307.18'
 $\Delta = 11^{\circ}00'00''$ E = 7.40'
 D = 3^{\circ}34'52'' P.C. STA. 258+83.88
 T = 154.06' P.T. STA. 261+91.06
 R = 1600.00'

NOTE:
 THE PROPOSED TRAFFIC CONTROL SIGNS SHOWN WILL BE FURNISHED AND INSTALLED BY OTHERS AND ARE FOR INFORMATION ONLY. THE CONTRACTOR SHALL NOTIFY THE ENGINEER A MINIMUM OF 14 DAYS PRIOR TO OPENING THE PROPOSED ROADWAYS TO TRAFFIC. THE ENGINEER WILL COORDINATE THE SIGN INSTALLATION WITH THE CITY OF BLOOMINGTON.

ILLINOIS DEPARTMENT OF TRANSPORTATION
**U.S. RTE. 51 (MAIN ST.)
 PAVEMENT MARKING**
 DATE : 6-09
 DRAWN BY : J.L.B.
 CHECKED BY : R.L.H.
 SCALE : 1"=20'