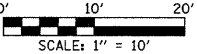
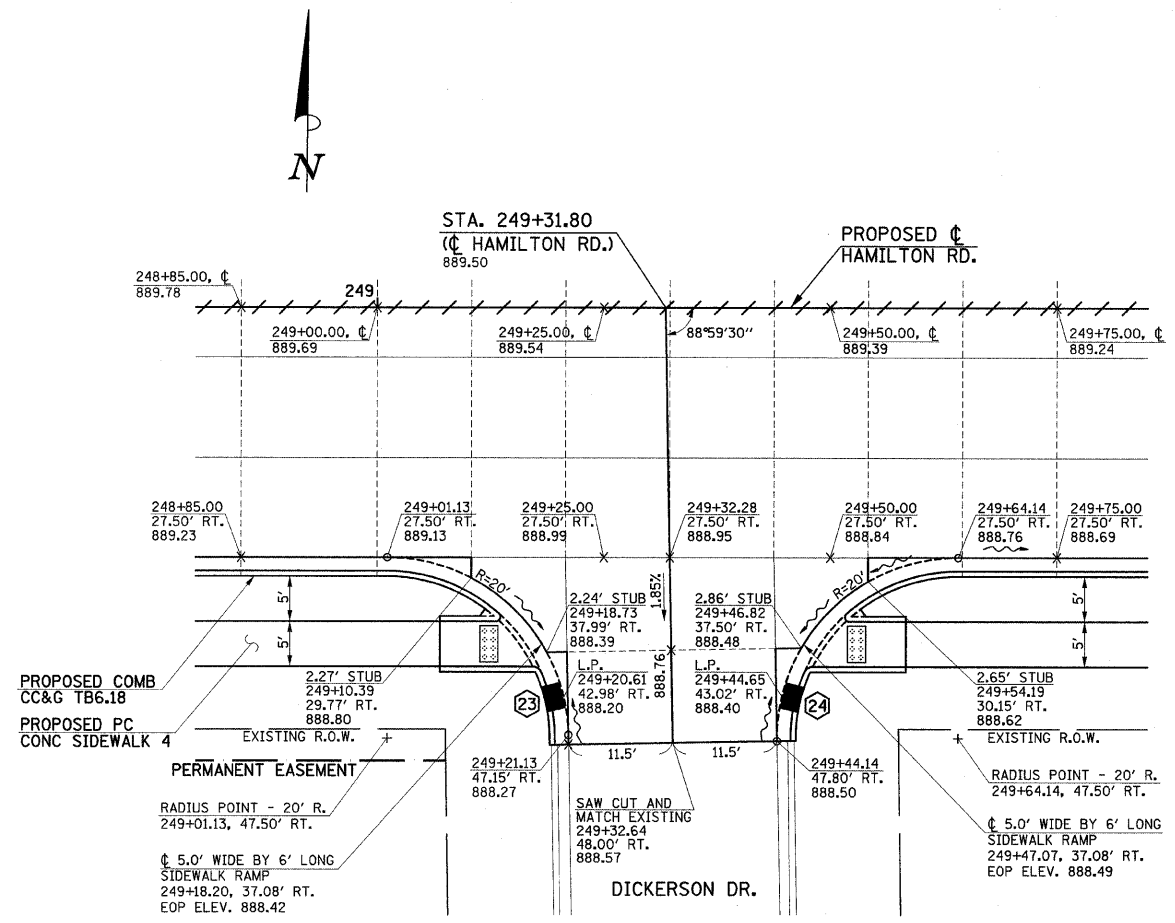


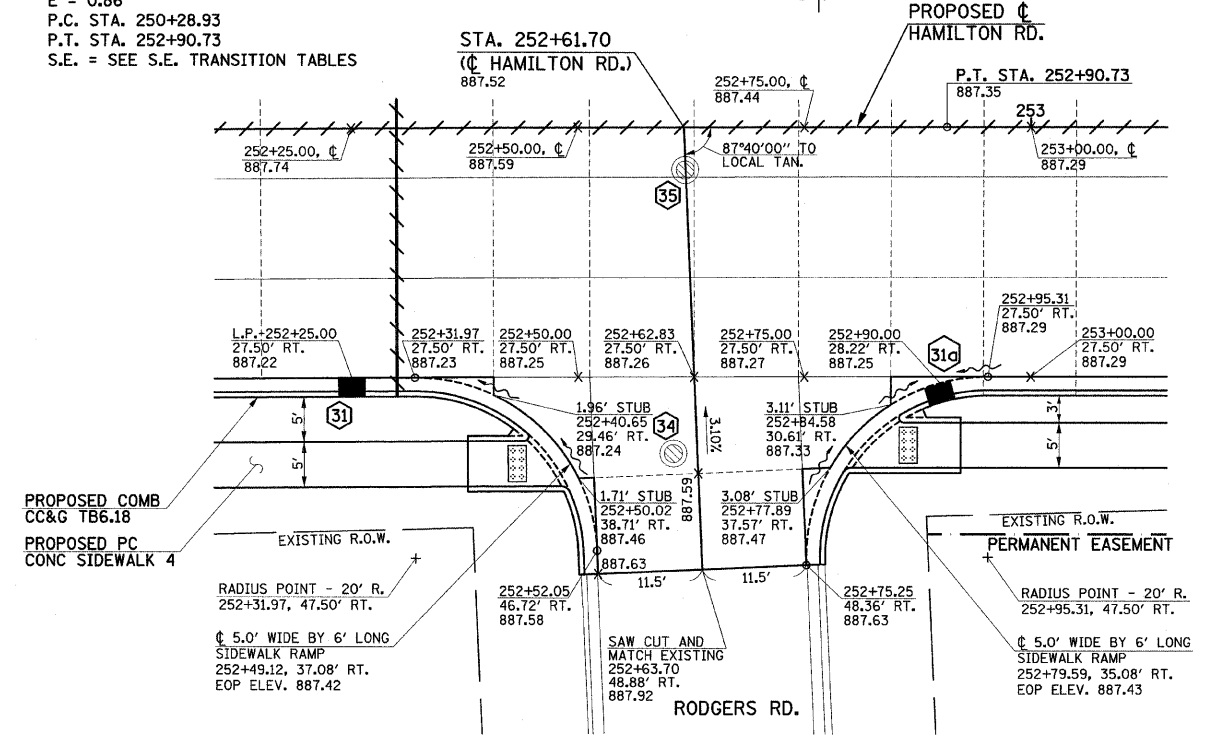
F.A.U. RTE.	SECTION	COUNTY	TOTAL SHEETS	SHEET NO.
6371	93-00295-03-PV	MCLEAN	109	56
STA.	TO STA.			
	ILLINOIS F.A. PROJ. NO. M-5227(046)			
CONTRACT NO. 91351				



PROPOSED ϕ
HAMILTON RD.
CURVE DATA
P.I. STA. 251+59.84
 $\Delta = 1^{\circ}30'00''$
 $D = 0^{\circ}34'23''$
 $T = 130.91'$
 $R = 10000.00'$
 $L = 261.80'$
 $E = 0.86'$
P.C. STA. 250+28.93
P.T. STA. 252+90.73
S.E. = SEE S.E. TRANSITION TABLES



**HAMILTON RD./
DICKERSON DR.**



**HAMILTON RD./
RODGERS RD.**

- LEGEND**
- PROPOSED SIDEWALK RAMP (SEE DETAIL)
 - STRUCTURE NUMBER (SEE PLAN/PROFILE SHEETS)
 - 1" TRANSVERSE EXPANSION JOINT (WITH DOWEL BARS - SEE STANDARD 420001)
 - STAGE CONSTRUCTION LIMITS

- NOTES**
- ON HAMILTON RD., THE P.C. CONCRETE PAVEMENT SHALL NOT BE POURED MONOLITHIC WITH THE COMBINATION CONCRETE CURB AND GUTTER EXCEPT AT THE STUB LOCATIONS SHOWN ON THE PLANS. THE COST OF ADDITIONAL GUTTER FLAG WIDTH WILL BE PAID FOR AT THE CONTRACT UNIT PRICE PER SQUARE YARD FOR THE SPECIFIED TYPE OF P.C. CONCRETE PAVEMENT.
 - THE CROSS SLOPE FOR THE P.C. CONCRETE PAVEMENT ON HAMILTON RD. SHALL BE TRANSITIONED ON THE RIGHT SIDE FROM STA. 252+20.00 AT -2.00% TO STA. 253+40.00 AT +1.00% AND ON THE LEFT SIDE FROM STA. 261+95.00 AT -2.00% TO STA. 262+55.04 AT -0.50%. FULL SUPERELEVATION ON RT. SIDE AT +1.00% FROM STA. 253+40.00 TO STA. 262+55.04. SEE THE PROPOSED TYPICAL SECTIONS AND THE CROSS SECTION SHEETS FOR ADDITIONAL INFORMATION.
 - ALL ELEVATIONS REFERRED TO ARE TO THE TOP OF FINISHED CONSTRUCTION.
 - SEE DRAINAGE STRUCTURE TABLES ON PLAN/PROFILE SHEETS FOR HORIZONTAL LOCATIONS AND VERTICAL ELEVATIONS OF DRAINAGE STRUCTURES.
 - SEE THE SUPERELEVATION TRANSITION TABLES FOR ADDITIONAL STATIONS, ELEVATIONS, AND OFFSETS TO THE EDGE OF PAVEMENT FOR THE PAVEMENT WARPING ON HAMILTON RD.
 - ALL STREET RADII ARE DIMENSIONED TO THE EDGE OF PAVEMENT.

SEE SCHEDULE OF QUANTITIES FOR TYPICAL SECTION PAVEMENT PAY ITEMS AND THEIR LOCATIONS.

SEE PROPOSED TYPICAL SECTION SHEETS, HORIZONTAL ALIGNMENT AND CONTROL SHEET, SUPERELEVATION TRANSITION TABLE SHEET, REMOVALS/RELOCATIONS SHEETS, PLAN AND PROFILE SHEETS, PAVEMENT JOINTS SHEETS, MISCELLANEOUS DETAILS SHEETS, AND CROSS SECTION SHEETS FOR ADDITIONAL INFORMATION.

ILLINOIS DEPARTMENT OF TRANSPORTATION

INTERSECTION DETAILS

DATE : 6-09
DRAWN BY : J.L.B.
CHECKED BY : R.L.H.
SCALE : 1"=10'