

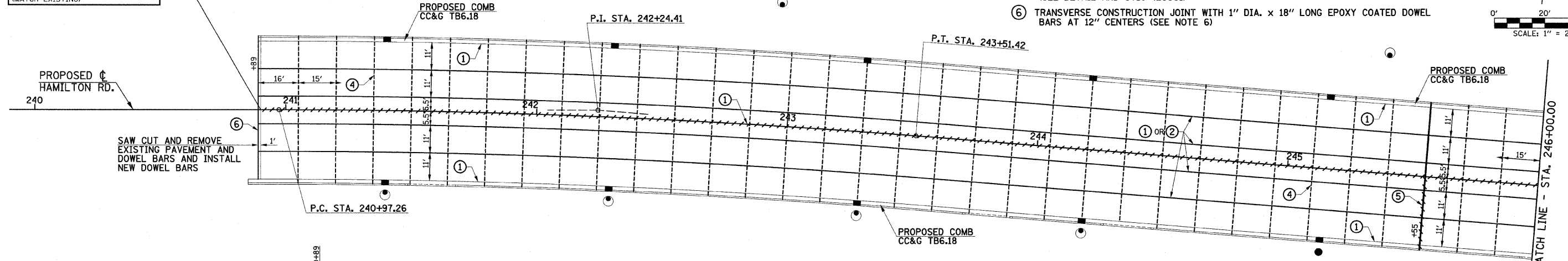
F.A.U. RTE.	SECTION	COUNTY	TOTAL SHEETS	SHEET NO.
6371	93-00295-03-PV	MCLEAN	109	54
STA. 240+00.00		TO STA. 252+00.00		
ILLINOIS F.A. PROJ. NO. M-5227(046)				
CONTRACT NO. 91351				

**PROPOSED HAMILTON RD. CURVE DATA**  
P.I. STA. 242+24.41 L = 254.16'  
Δ = 4°33'03" E = 2.52'  
D = 1°47'26" P.C. STA. 240+97.26  
T = 127.15' P.T. STA. 243+51.42  
R = 3200.00'

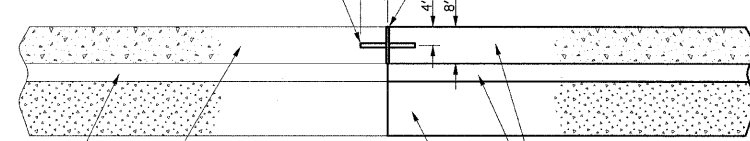
- LEGEND**
- PROPOSED 1" EXPANSION JOINTS
  - PROPOSED LONGITUDINAL JOINTS
  - - - - PROPOSED SAWED CONTRACTION JOINTS
  - /// STAGE CONSTRUCTION LIMITS
  - OR ■ PROPOSED INLETS
  - PROPOSED MANHOLES

- PAVEMENT JOINT KEY**
- ① LONGITUDINAL CONSTRUCTION JOINT WITH NO. 6 x 24" EPOXY COATED TIE BARS GROUTED IN PLACE OR NO. 6 x 30" EPOXY COATED TIE BARS FORMED IN PLACE AT 24" CENTERS (STD. 420001)
  - ② SAWED LONGITUDINAL JOINT WITH NO. 6 x 30" EPOXY COATED TIE BARS AT 30" CENTERS (STD. 420001)
  - ③ NOT USED
  - ④ SAWED TRANSVERSE CONTRACTION JOINT WITH 1" DIA. x 18" LONG EPOXY COATED DOWEL BARS AT 12" CENTERS. JOINTS PLACED AT 15' CENTERS OR AS SHOWN ON PLANS (STD. 420001)
  - ⑤ 1" TRANSVERSE EXPANSION JOINT WITH 1" DIA. EPOXY COATED DOWEL BARS (SEE DETAIL AND STD. 420001)
  - ⑥ TRANSVERSE CONSTRUCTION JOINT WITH 1" DIA. x 18" LONG EPOXY COATED DOWEL BARS AT 12" CENTERS (SEE NOTE 6)

**BEGIN IMPROVEMENTS**  
HAMILTON RD.  
STA. 240+90.00  
(MATCH EXISTING)



1" DIA. x 18" LONG EPOXY COATED DOWEL BARS AT 12" CENTERS, DRILL HOLES AND GROUT DOWEL BARS IN PLACE.

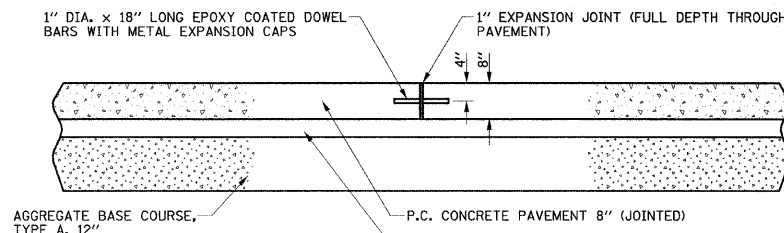
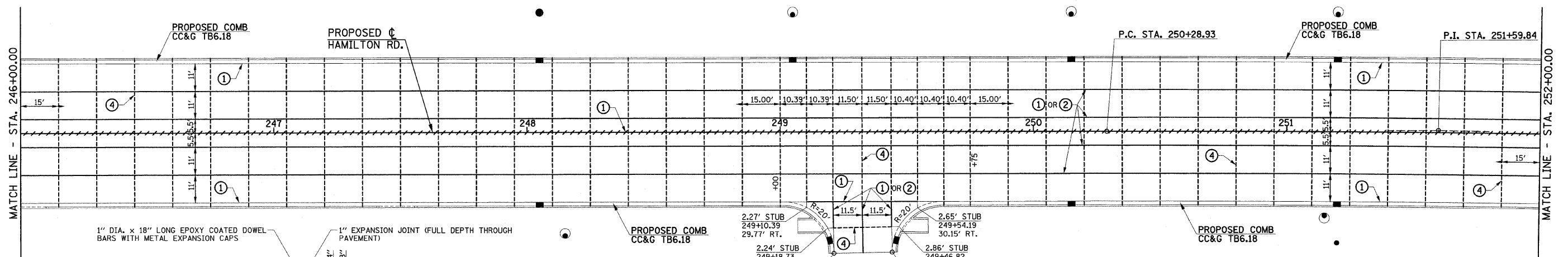


**CONSTRUCTION JOINT DETAIL**  
STA. 240+89

- NOTES**
1. SAW CUT AND REMOVE THE EXISTING PAVEMENT AND DOWEL BARS AS SHOWN ON THE REMOVALS/RELOCATION PLAN.
  2. SEE THE SPECIAL PROVISIONS FOR ADDITIONAL REQUIREMENTS FOR P.C. CONCRETE PAVEMENT 8" (JOINTED).

**NOTES**

1. THE CURB AND GUTTER SHALL NOT BE POURED MONOLITHIC WITH THE P.C. CONCRETE PAVEMENT EXCEPT AT THE STUB LOCATIONS. TIE BARS BETWEEN THE PAVEMENT AND THE CURB AND GUTTER WILL BE REQUIRED.
2. ALL SAWED TRANSVERSE CONTRACTION JOINTS AND EXPANSION JOINTS IN THE PAVEMENT MUST EXTEND THROUGH THE CURB AND GUTTER.
3. ALL JOINTS IN THE PAVEMENT AND CURB AND GUTTER SHALL BE SEALED WITH A JOINT SEALER MEETING THE REQUIREMENTS OF ARTICLES 420.02, 420.12, 602.02 AND 606.07.
4. THE P.C. CONCRETE PAVEMENT SHALL BE POURED MONOLITHIC WITH THE COMBINATION CONCRETE CURB AND GUTTER AT THE STUB LOCATIONS SHOWN ON THE JOINTING PLAN. THE COST OF ADDITIONAL GUTTER FLAG WIDTH WILL BE PAID FOR AT THE CONTRACT UNIT PRICE PER SQUARE YARD FOR P.C. CONCRETE PAVEMENT.
5. WHEN LONGITUDINAL CONSTRUCTION JOINTS ARE CONSTRUCTED IN THE PAVEMENT, THE JOINTS SHALL BE TIED WITH NO. 6 x 24" EPOXY COATED TIE BARS GROUTED IN PLACE OR NO. 6 x 30" EPOXY COATED TIE BARS FORMED IN PLACE SPACED AT 24" CENTERS AS SHOWN ON STANDARD 420001.
6. TRANSVERSE CONSTRUCTION JOINTS SHALL MATCH THE LOCATION OF THE SAWED TRANSVERSE JOINTS OR EXPANSION JOINTS SHOWN ON THE PAVEMENT JOINT PLANS AND SHALL BE AS SHOWN ON STANDARDS 420101 AND 420106. TRANSVERSE CONSTRUCTION JOINTS SHALL NOT BE PLACED LESS THAN 25 FEET FROM A STAGE CONSTRUCTION LIMIT. THE TRANSVERSE CONSTRUCTION JOINTS SHALL HAVE SMOOTH EPOXY COATED DOWEL BARS 1" DIA. x 18 INCHES LONG PLACED AT 12 INCH SPACINGS AND CENTERED ACROSS THE JOINT.



**TRANSVERSE EXPANSION JOINT DETAIL**

- NOTES**
1. SEE STANDARD 420001 FOR ADDITIONAL INFORMATION FOR THE EXPANSION JOINTS.
  2. SEE THE SPECIAL PROVISIONS FOR ADDITIONAL REQUIREMENTS FOR P.C. CONCRETE PAVEMENT 8" (JOINTED).

ILLINOIS DEPARTMENT OF TRANSPORTATION

**HAMILTON ROAD PAVEMENT JOINTS**

DATE : 6-09  
DRAWN BY : J.L.B.  
CHECKED BY : R.L.H.

SCALE : 1"=20'