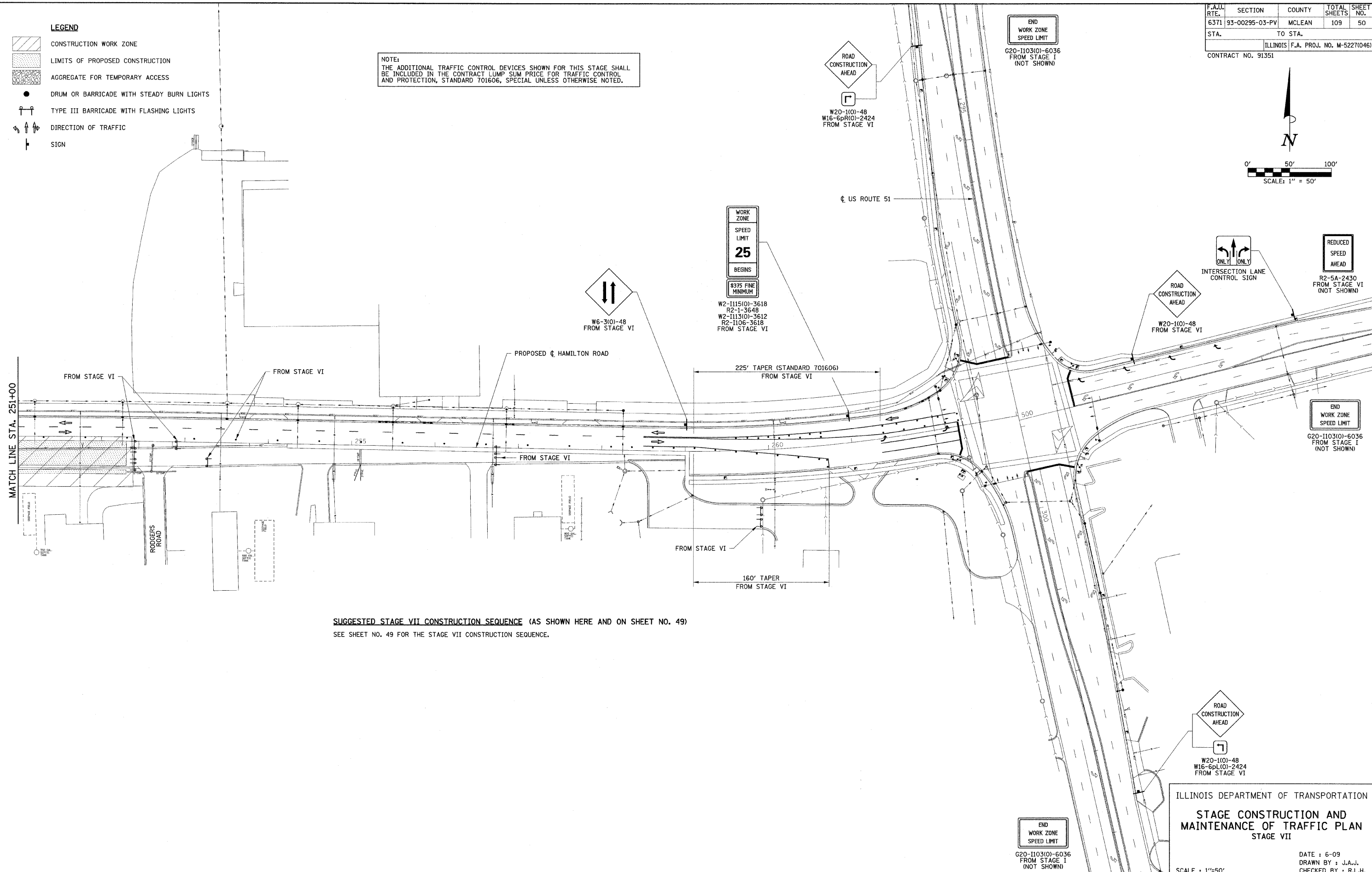
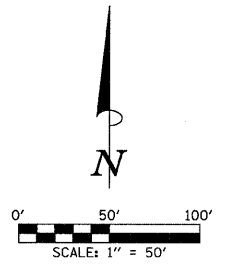


F.A.U. RTE.	SECTION	COUNTY	TOTAL SHEETS	SHEET NO.
6371	93-00295-03-PV	MCLEAN	109	50
STA.		TO STA.		
ILLINOIS F.A. PROJ. NO. M-5227(046)				
CONTRACT NO. 91351				

- LEGEND**
- CONSTRUCTION WORK ZONE
 - LIMITS OF PROPOSED CONSTRUCTION
 - AGGREGATE FOR TEMPORARY ACCESS
 - DRUM OR BARRICADE WITH STEADY BURN LIGHTS
 - TYPE III BARRICADE WITH FLASHING LIGHTS
 - DIRECTION OF TRAFFIC
 - SIGN

NOTE:
THE ADDITIONAL TRAFFIC CONTROL DEVICES SHOWN FOR THIS STAGE SHALL BE INCLUDED IN THE CONTRACT LUMP SUM PRICE FOR TRAFFIC CONTROL AND PROTECTION, STANDARD 701606, SPECIAL UNLESS OTHERWISE NOTED.



SUGGESTED STAGE VII CONSTRUCTION SEQUENCE (AS SHOWN HERE AND ON SHEET NO. 49)
SEE SHEET NO. 49 FOR THE STAGE VII CONSTRUCTION SEQUENCE.

ILLINOIS DEPARTMENT OF TRANSPORTATION
STAGE CONSTRUCTION AND MAINTENANCE OF TRAFFIC PLAN
STAGE VII

DATE : 6-09
DRAWN BY : J.A.J.
CHECKED BY : R.L.H.

SCALE : 1"=50'