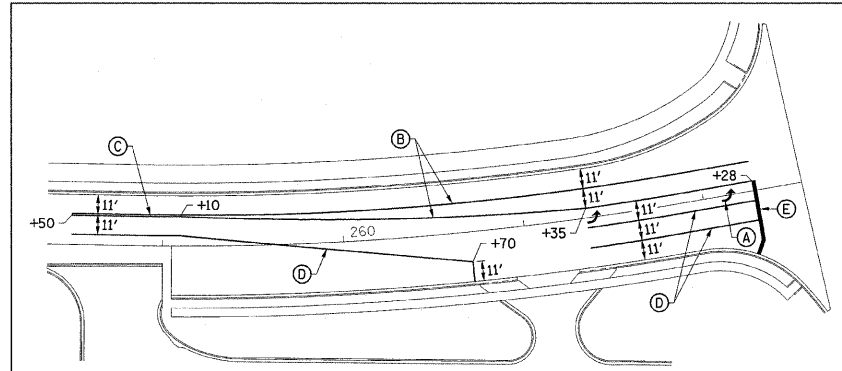


F.A.U. RTE.	SECTION	COUNTY	TOTAL SHEETS	SHEET NO.
6371	93-00295-03-PV	MCLEAN	109	45
STA. TO STA.		ILLINOIS F.A. PROJ. NO. M-5227(046)		
CONTRACT NO. 91351				

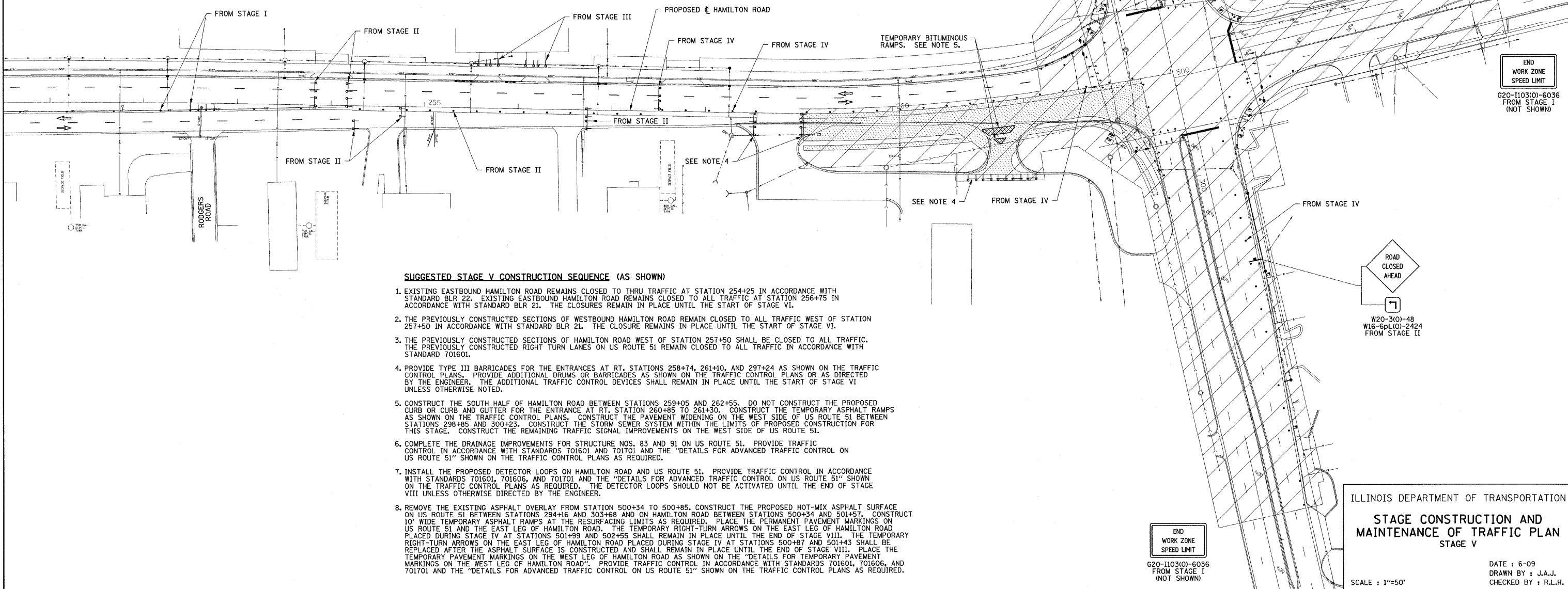
- LEGEND**
- CONSTRUCTION WORK ZONE
 - LIMITS OF PROPOSED CONSTRUCTION
 - AGGREGATE FOR TEMPORARY ACCESS
 - DRUM OR BARRICADE WITH STEADY BURN LIGHTS
 - TYPE III BARRICADE WITH FLASHING LIGHTS
 - DIRECTION OF TRAFFIC
 - SIGN

- WORK ZONE PAVEMENT MARKING LEGEND**
- (A) PAVEMENT MARKING TAPE, TYPE III - LETTERS AND SYMBOLS
 - (B) PAVEMENT MARKING TAPE, TYPE III 4" - YELLOW
 - (C) PAVEMENT MARKING TAPE, TYPE III 4" - DOUBLE YELLOW
 - (D) PAVEMENT MARKING TAPE, TYPE III 4" - WHITE
 - (E) PAVEMENT MARKING TAPE, TYPE III 24" - WHITE

NOTE:
THE ADDITIONAL TRAFFIC CONTROL DEVICES SHOWN FOR THIS STAGE SHALL BE INCLUDED IN THE CONTRACT LUMP SUM PRICE FOR TRAFFIC CONTROL AND PROTECTION, STANDARD BLR 21, SPECIAL UNLESS OTHERWISE NOTED.



DETAILS FOR TEMPORARY PAVEMENT MARKINGS ON THE WEST LEG OF HAMILTON ROAD
THE TEMPORARY PAVEMENT MARKINGS SHALL REMAIN IN PLACE UNTIL THE END OF STAGE VIII UNLESS OTHERWISE DIRECTED BY THE ENGINEER.



SUGGESTED STAGE V CONSTRUCTION SEQUENCE (AS SHOWN)

1. EXISTING EASTBOUND HAMILTON ROAD REMAINS CLOSED TO THRU TRAFFIC AT STATION 254+25 IN ACCORDANCE WITH STANDARD BLR 22. EXISTING EASTBOUND HAMILTON ROAD REMAINS CLOSED TO ALL TRAFFIC AT STATION 256+75 IN ACCORDANCE WITH STANDARD BLR 21. THE CLOSURES REMAIN IN PLACE UNTIL THE START OF STAGE VI.
2. THE PREVIOUSLY CONSTRUCTED SECTIONS OF WESTBOUND HAMILTON ROAD REMAIN CLOSED TO ALL TRAFFIC WEST OF STATION 257+50 IN ACCORDANCE WITH STANDARD BLR 21. THE CLOSURE REMAINS IN PLACE UNTIL THE START OF STAGE VI.
3. THE PREVIOUSLY CONSTRUCTED SECTIONS OF HAMILTON ROAD WEST OF STATION 257+50 SHALL BE CLOSED TO ALL TRAFFIC. THE PREVIOUSLY CONSTRUCTED RIGHT TURN LANES ON US ROUTE 51 REMAIN CLOSED TO ALL TRAFFIC IN ACCORDANCE WITH STANDARD 701601.
4. PROVIDE TYPE III BARRICADES FOR THE ENTRANCES AT RT. STATIONS 258+74, 261+10, AND 297+24 AS SHOWN ON THE TRAFFIC CONTROL PLANS. PROVIDE ADDITIONAL DRUMS OR BARRICADES AS SHOWN ON THE TRAFFIC CONTROL PLANS OR AS DIRECTED BY THE ENGINEER. THE ADDITIONAL TRAFFIC CONTROL DEVICES SHALL REMAIN IN PLACE UNTIL THE START OF STAGE VI UNLESS OTHERWISE NOTED.
5. CONSTRUCT THE SOUTH HALF OF HAMILTON ROAD BETWEEN STATIONS 259+05 AND 262+55. DO NOT CONSTRUCT THE PROPOSED CURB OR CURB AND GUTTER FOR THE ENTRANCE AT RT. STATION 260+85 TO 261+30. CONSTRUCT THE TEMPORARY ASPHALT RAMPS AS SHOWN ON THE TRAFFIC CONTROL PLANS. CONSTRUCT THE PAVEMENT WIDENING ON THE WEST SIDE OF US ROUTE 51 BETWEEN STATIONS 298+85 AND 300+23. CONSTRUCT THE STORM SEWER SYSTEM WITHIN THE LIMITS OF PROPOSED CONSTRUCTION FOR THIS STAGE. CONSTRUCT THE REMAINING TRAFFIC SIGNAL IMPROVEMENTS ON THE WEST SIDE OF US ROUTE 51.
6. COMPLETE THE DRAINAGE IMPROVEMENTS FOR STRUCTURE NOS. 83 AND 91 ON US ROUTE 51. PROVIDE TRAFFIC CONTROL IN ACCORDANCE WITH STANDARDS 701601 AND 701701 AND THE "DETAILS FOR ADVANCED TRAFFIC CONTROL ON US ROUTE 51" SHOWN ON THE TRAFFIC CONTROL PLANS AS REQUIRED.
7. INSTALL THE PROPOSED DETECTOR LOOPS ON HAMILTON ROAD AND US ROUTE 51. PROVIDE TRAFFIC CONTROL IN ACCORDANCE WITH STANDARDS 701601, 701606, AND 701701 AND THE "DETAILS FOR ADVANCED TRAFFIC CONTROL ON US ROUTE 51" SHOWN ON THE TRAFFIC CONTROL PLANS AS REQUIRED. THE DETECTOR LOOPS SHOULD NOT BE ACTIVATED UNTIL THE END OF STAGE VIII UNLESS OTHERWISE DIRECTED BY THE ENGINEER.
8. REMOVE THE EXISTING ASPHALT OVERLAY FROM STATION 500+34 TO 500+85. CONSTRUCT THE PROPOSED HOT-MIX ASPHALT SURFACE ON US ROUTE 51 BETWEEN STATIONS 294+16 AND 303+68 AND ON HAMILTON ROAD BETWEEN STATIONS 500+34 AND 501+43. CONSTRUCT 10' WIDE TEMPORARY ASPHALT RAMPS AT THE RESURFACING LIMITS AS REQUIRED. PLACE THE PERMANENT PAVEMENT MARKINGS ON US ROUTE 51 AND THE EAST LEG OF HAMILTON ROAD. THE TEMPORARY RIGHT-TURN ARROWS ON THE EAST LEG OF HAMILTON ROAD PLACED DURING STAGE IV AT STATIONS 501+99 AND 502+55 SHALL REMAIN IN PLACE UNTIL THE END OF STAGE VIII. THE TEMPORARY RIGHT-TURN ARROWS ON THE EAST LEG OF HAMILTON ROAD PLACED DURING STAGE IV AT STATIONS 500+87 AND 501+43 SHALL BE REPLACED AFTER THE ASPHALT SURFACE IS CONSTRUCTED AND SHALL REMAIN IN PLACE UNTIL THE END OF STAGE VIII. PLACE THE TEMPORARY PAVEMENT MARKINGS ON THE WEST LEG OF HAMILTON ROAD AS SHOWN ON THE "DETAILS FOR TEMPORARY PAVEMENT MARKINGS ON THE WEST LEG OF HAMILTON ROAD". PROVIDE TRAFFIC CONTROL IN ACCORDANCE WITH STANDARDS 701601, 701606, AND 701701 AND THE "DETAILS FOR ADVANCED TRAFFIC CONTROL ON US ROUTE 51" SHOWN ON THE TRAFFIC CONTROL PLANS AS REQUIRED.