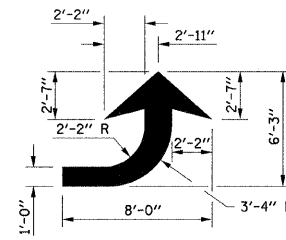
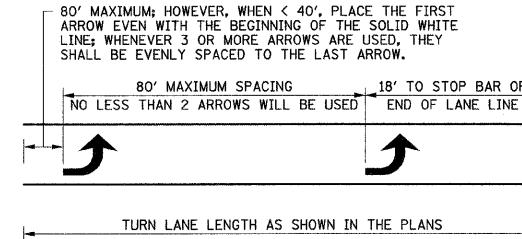


F.A.U. RTE.	SECTION	COUNTY	TOTAL SHEETS	SHEET NO.
6371	93-00295-03-PV	MCLEAN	109	36
STA. _____ TO STA. _____		ILLINOIS F.A. PROJ. NO. M-5227(046)		
CONTRACT NO. 91351				

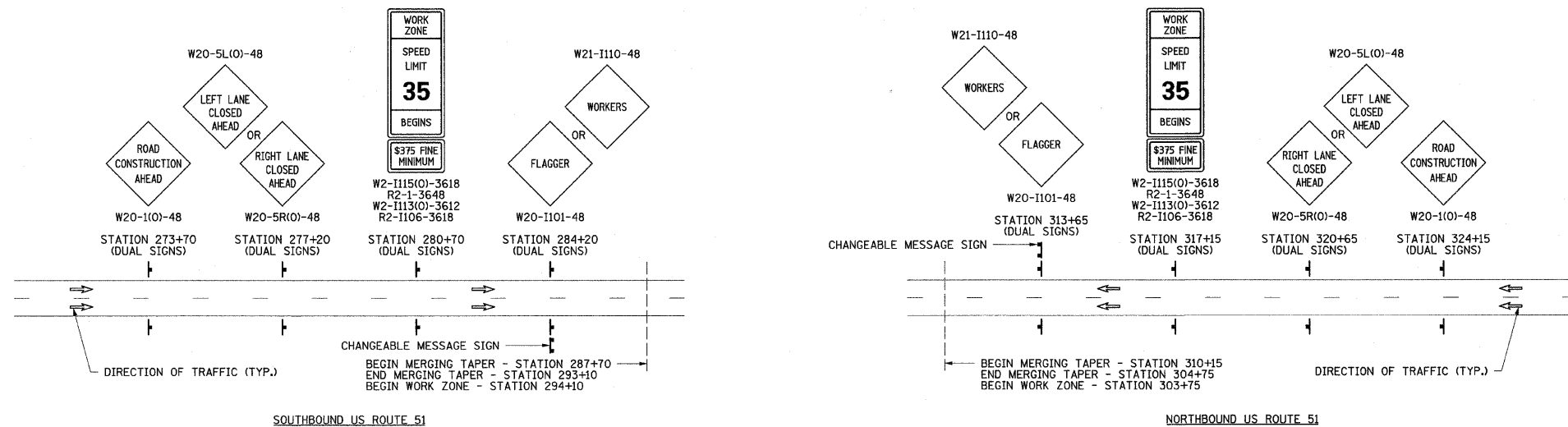


LEFT ARROW
REVERSE FOR RIGHT ARROW
AREA = 15.6 SQ FT



LEFT TURN LANE PAVEMENT MARKING
SAME SPACING APPLIES FOR
RIGHT TURN LANE

DETAILS FOR PAVEMENT MARKING LETTERS AND SYMBOLS AT TURN LANES
APPLIES FOR EVERY LEFT OR RIGHT TURN LANE DURING EACH STAGE OF CONSTRUCTION.



DETAILS FOR ADVANCED TRAFFIC CONTROL ON US ROUTE 51

NOTES FOR ADVANCED TRAFFIC CONTROL ON US ROUTE 51

- ADVANCED TRAFFIC CONTROL ON US ROUTE 51 SHALL BE IN ACCORDANCE WITH STANDARD 701601 AS MODIFIED HEREIN.
- SIGN LOCATIONS ARE BASED ON THE STATION THAT THE MERGING TAPER BEGINS. SIGN LOCATIONS MAY BE ADJUSTED TO FIT FIELD CONDITIONS AS DIRECTED BY THE ENGINEER.
- THE "ROAD CONSTRUCTION AHEAD" SIGNS AND CONSTRUCTION SPEED LIMIT SIGN ASSEMBLIES SHALL REMAIN IN PLACE UNTIL ALL WORK ON US ROUTE 51 IS COMPLETE UNLESS OTHERWISE DIRECTED BY THE ENGINEER.
- THE USE OF CONES AS TRAFFIC CONTROL DEVICES SHALL ONLY BE ALLOWED FOR DAYTIME OPERATIONS AS DIRECTED BY THE ENGINEER.
- PAVEMENT MARKING TAPE, TYPE III 4" SHALL BE PLACED THROUGHOUT THE MERGING TAPER AND UP TO THE WORK ZONE WHEN THE LANE CLOSURE TIME IS GREATER THAN 14 DAYS AND AS SHOWN ON THE TRAFFIC CONTROL PLANS. THE EDGE LINE SHALL BE YELLOW FOR LEFT LANE CLOSURES.
- CHANGEABLE MESSAGE SIGNS SHALL BE PROVIDED AND MAINTAINED BY THE CONTRACTOR AT THE LOCATIONS SHOWN ON THE DETAIL. THE MESSAGES FOR THE SIGNS WILL BE PROVIDED BY THE ENGINEER. THE SIGNS SHALL BE PUT INTO OPERATION ONE WEEK PRIOR TO THE HAMILTON ROAD CLOSURE IN STAGE II TO INFORM MOTORISTS OF THE IMPENDING ROAD CLOSURE. THE SIGNS SHALL REMAIN IN PLACE FOR SEVEN CALENDAR DAYS OR AS OTHERWISE DIRECTED BY THE ENGINEER.

ILLINOIS DEPARTMENT OF TRANSPORTATION
**STAGE CONSTRUCTION AND
MAINTENANCE OF TRAFFIC PLAN
DETAILS**
DATE : 6-09
DRAWN BY : J.A.J.
CHECKED BY : R.L.H.
SCALE : NONE