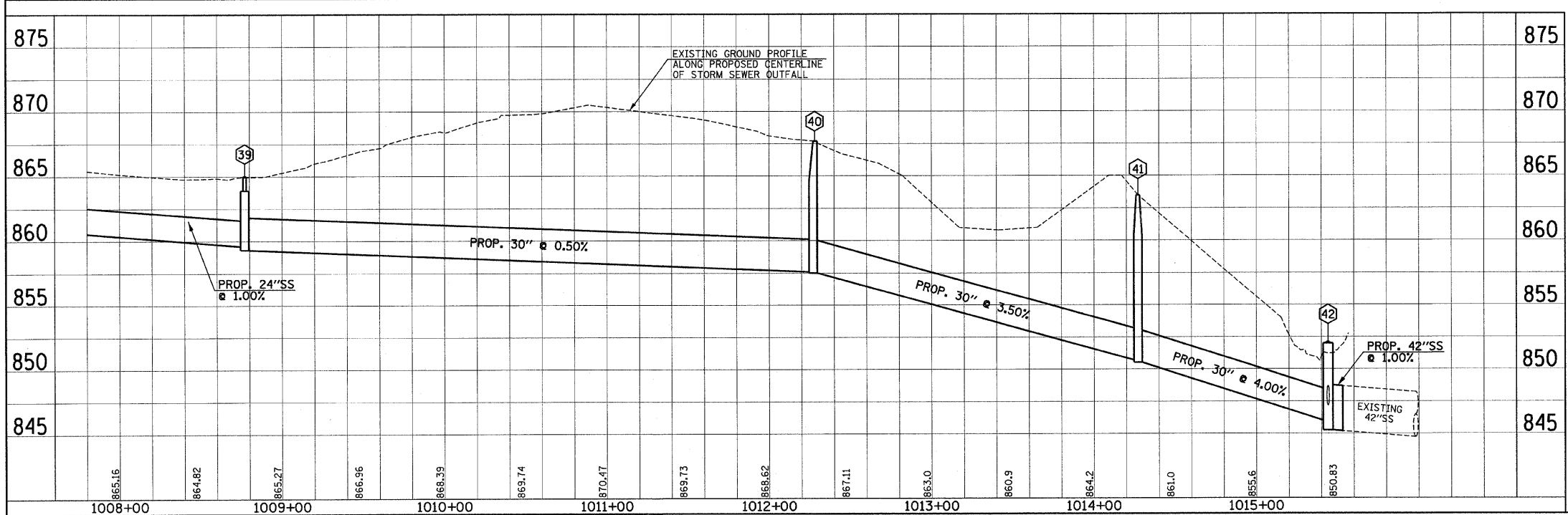
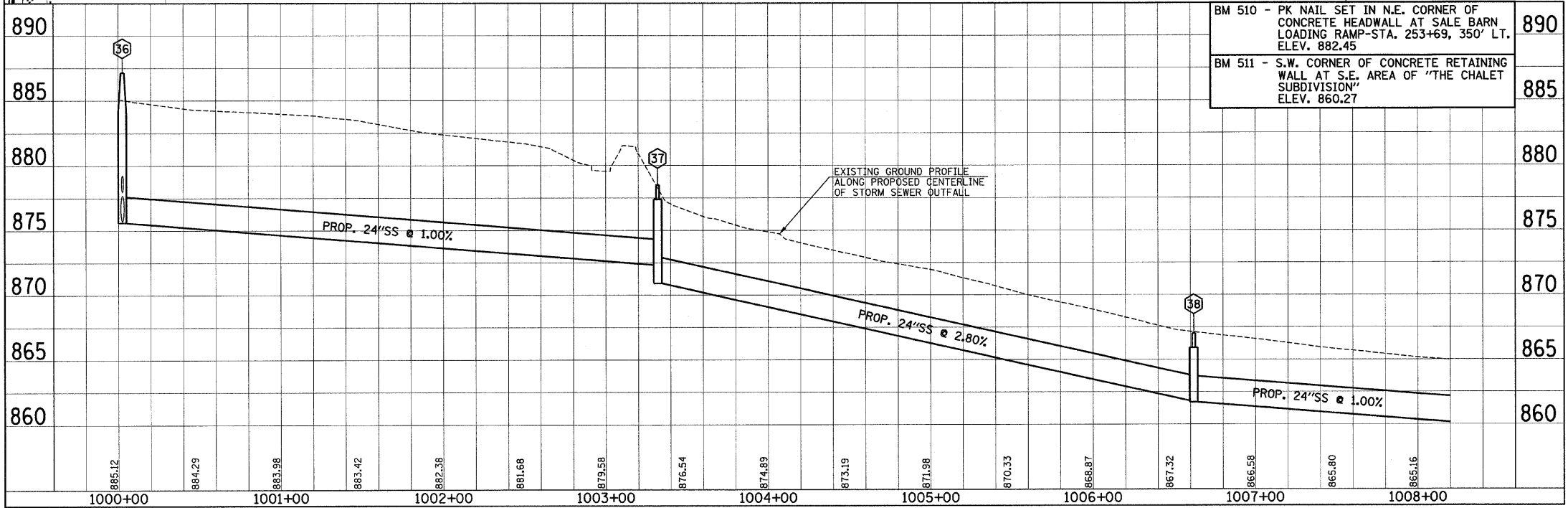
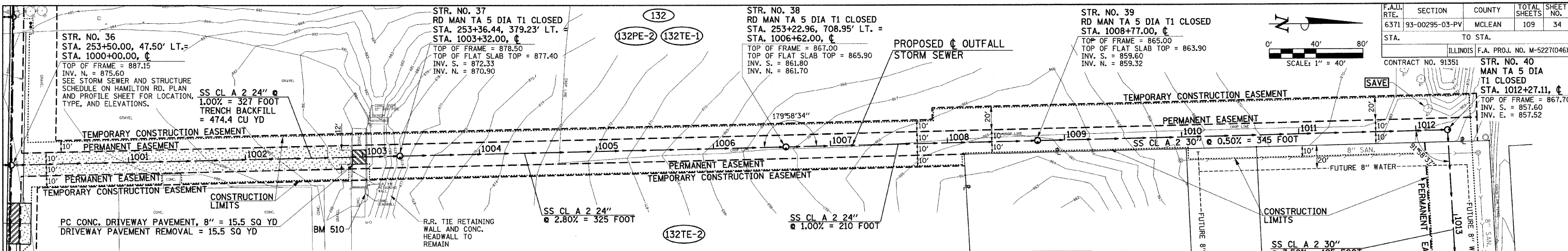
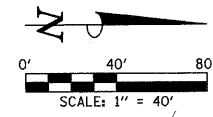


F.A.U. RTE.	SECTION	COUNTY	TOTAL SHEETS	SHEET NO.
6371	93-00295-03-PV	MCLEAN	109	34
STA.	TO STA.		ILLINOIS F.A. PROJ. NO. M-5227(046)	
			CONTRACT NO. 91351	



- LEGEND**
- PROPOSED PCC DRIVEWAY PAVEMENT (6" FOR P.E. - 8" FOR C.E.)
  - PROPOSED AGGREGATE SURFACE COURSE, TYPE B (8" THICK)

SEE HORIZONTAL ALIGNMENT LAYOUT AND CONTROL SHEETS FOR ADDITIONAL INFORMATION.

ILLINOIS DEPARTMENT OF TRANSPORTATION  
**OUTFALL STORM SEWER  
 PLAN AND PROFILE**