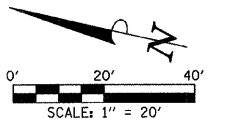


F.A.U. RTE.	SECTION	COUNTY	TOTAL SHEETS	SHEET NO.
6371	93-00295-03-PV	MCLEAN	109	33
STA. 301+60.00		TO STA. 306+00.00		
ILLINOIS F.A. PROJ. NO. M-5227(046)				
CONTRACT NO. 91351				



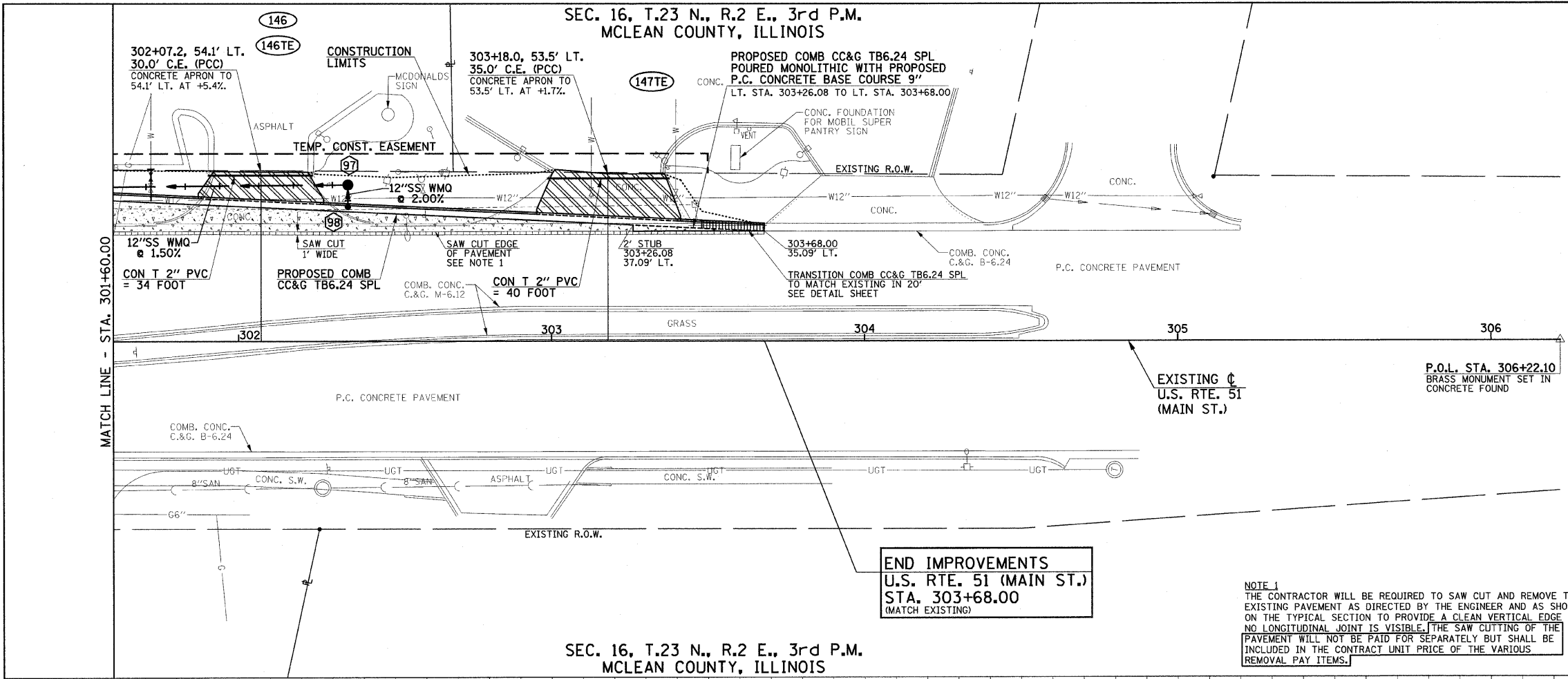
- LEGEND**
- PROPOSED PCC DRIVEWAY PAVEMENT (6" FOR P.E. - 8" FOR C.E.)
 - PROPOSED PORTLAND CEMENT CONCRETE BASE COURSE 9"
 - PROPOSED HOT-MIX ASPHALT SURFACE REMOVAL 2 1/2"

FOR REMOVAL/RELOCATION PLAN IN THIS AREA SEE SHEET NO. 24.

SEE HORIZONTAL ALIGNMENT LAYOUT AND CONTROL SHEETS FOR ADDITIONAL INFORMATION.

SEE SCHEDULE OF QUANTITIES FOR TYPICAL SECTION PAVEMENT PAY ITEMS AND THEIR LOCATIONS.

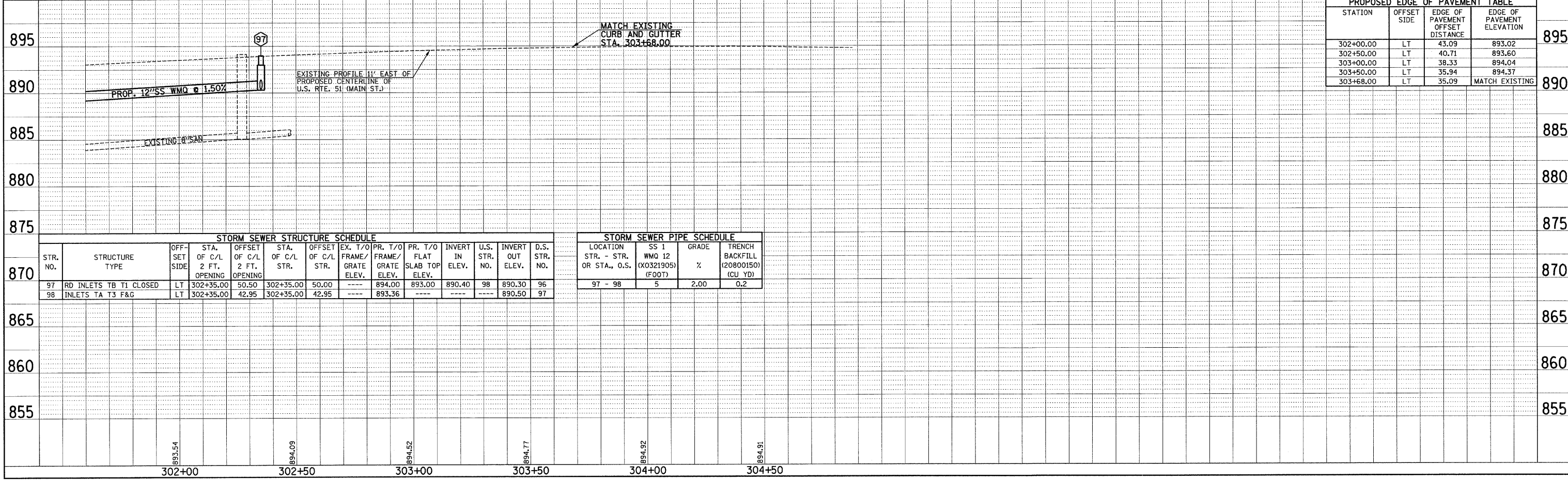
SEE THE STAGE CONSTRUCTION AND MAINTENANCE OF TRAFFIC PLANS FOR THE VARIOUS STAGES AND CONSTRUCTION SEQUENCES ON U.S. RTE 51.



END IMPROVEMENTS
 U.S. RTE. 51 (MAIN ST.)
 STA. 303+68.00
 (MATCH EXISTING)

NOTE 1
 THE CONTRACTOR WILL BE REQUIRED TO SAW CUT AND REMOVE THE EXISTING PAVEMENT AS DIRECTED BY THE ENGINEER AND AS SHOWN ON THE TYPICAL SECTION TO PROVIDE A CLEAN VERTICAL EDGE IF NO LONGITUDINAL JOINT IS VISIBLE. THE SAW CUTTING OF THE PAVEMENT WILL NOT BE PAID FOR SEPARATELY BUT SHALL BE INCLUDED IN THE CONTRACT UNIT PRICE OF THE VARIOUS REMOVAL PAY ITEMS.

STATION	OFFSET SIDE	EDGE OF PAVEMENT OFFSET DISTANCE	EDGE OF PAVEMENT ELEVATION
302+00.00	LT	43.09	893.02
302+50.00	LT	40.71	893.60
303+00.00	LT	38.33	894.04
303+50.00	LT	35.94	894.37
303+68.00	LT	35.09	MATCH EXISTING



STR. NO.	STRUCTURE TYPE	OFF-SET SIDE	STA. OF C/L 2 FT. OPENING	OFFSET OF C/L 2 FT. STR.	STA. OF C/L STR.	OFFSET OF C/L STR.	EX. T/O FRAME/GRATE ELEV.	PR. T/O FRAME/GRATE ELEV.	PR. T/O FLAT SLAB TOP ELEV.	INVERT IN ELEV.	U.S. STR. NO.	INVERT OUT ELEV.	D.S. STR. NO.
97	RD INLETS TB T1 CLOSED	LT	302+35.00	50.50	302+35.00	50.00	894.00	893.00	890.40	98	890.30	96	
98	INLETS TA T3 F&G	LT	302+35.00	42.95	302+35.00	42.95	893.36	---	---	---	---	890.50	97

LOCATION STR. - STR. OR STA., O.S.	SS 1 WMQ 12 (X0321905) (FOOT)	GRADE %	TRENCH BACKFILL (20800150) (CU YD)
97 - 98	5	2.00	0.2

PLAN	SURVEYED	DATE
NOTE BOOK	ALIGNED	BY
NO.	CHKD	
	FILE	

PROFILE	SURVEYED	DATE
NOTE BOOK	ALIGNED	BY
NO.	CHKD	
	FILE	