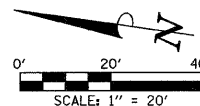


SEC. 16, T.23 N., R.2 E., 3rd P.M.
MCLEAN COUNTY, ILLINOIS

NOTE 1
THE CONTRACTOR WILL BE REQUIRED TO SAW CUT AND REMOVE THE EXISTING PAVEMENT AS DIRECTED BY THE ENGINEER AND AS SHOWN ON THE TYPICAL SECTION TO PROVIDE A CLEAN VERTICAL EDGE IF NO LONGITUDINAL JOINT IS VISIBLE. THE SAW CUTTING OF THE PAVEMENT WILL NOT BE PAID FOR SEPARATELY BUT SHALL BE INCLUDED IN THE CONTRACT UNIT PRICE OF THE VARIOUS REMOVAL PAY ITEMS.

EXISTING ϕ
U.S. RTE. 51
(MAIN ST.)
CURVE DATA
P.I. STA. 293+53.59
 $\Delta = 13^{\circ}40'12''$
 $D = 1^{\circ}30'00''$
 $T = 457.84'$
 $R = 3819.72'$
 $L = 911.34'$
 $E = 27.34'$
P.C. STA. 288+95.75
P.T. STA. 298+07.09
S.E. = TO MATCH EXISTING

F.A.D. RTE.	SECTION	COUNTY	TOTAL SHEETS	SHEET NO.
6371	93-00295-03-PV	MCLEAN	109	31
STA. 293+00.00		TO STA. 297+00.00		
ILLINOIS F.A. PROJ. NO. M-5227(046)				
CONTRACT NO. 91351				



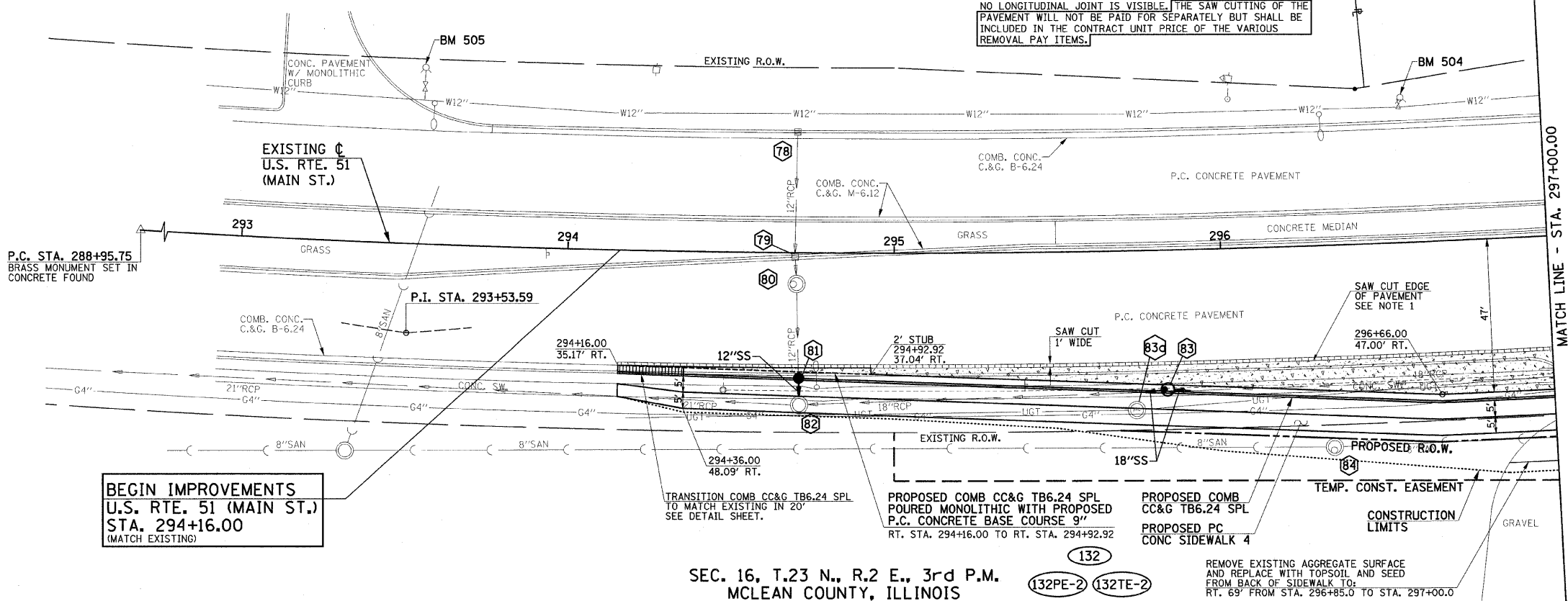
- LEGEND**
- PROPOSED PORTLAND CEMENT CONCRETE BASE COURSE 9"
 - PROPOSED HOT-MIX ASPHALT SURFACE REMOVAL 2 1/2"

FOR REMOVAL/RELOCATION PLAN IN THIS AREA SEE SHEET NO. 23.

SEE HORIZONTAL ALIGNMENT LAYOUT AND CONTROL SHEETS FOR ADDITIONAL INFORMATION.

SEE SCHEDULE OF QUANTITIES FOR TYPICAL SECTION PAVEMENT PAY ITEMS AND THEIR LOCATIONS.

SEE THE STAGE CONSTRUCTION AND MAINTENANCE OF TRAFFIC PLANS FOR THE VARIOUS STAGES AND CONSTRUCTION SEQUENCES ON U.S. RTE 51.



BEGIN IMPROVEMENTS
U.S. RTE. 51 (MAIN ST.)
STA. 294+16.00
(MATCH EXISTING)

SEC. 16, T.23 N., R.2 E., 3rd P.M.
MCLEAN COUNTY, ILLINOIS

132
132PE-2 132TE-2

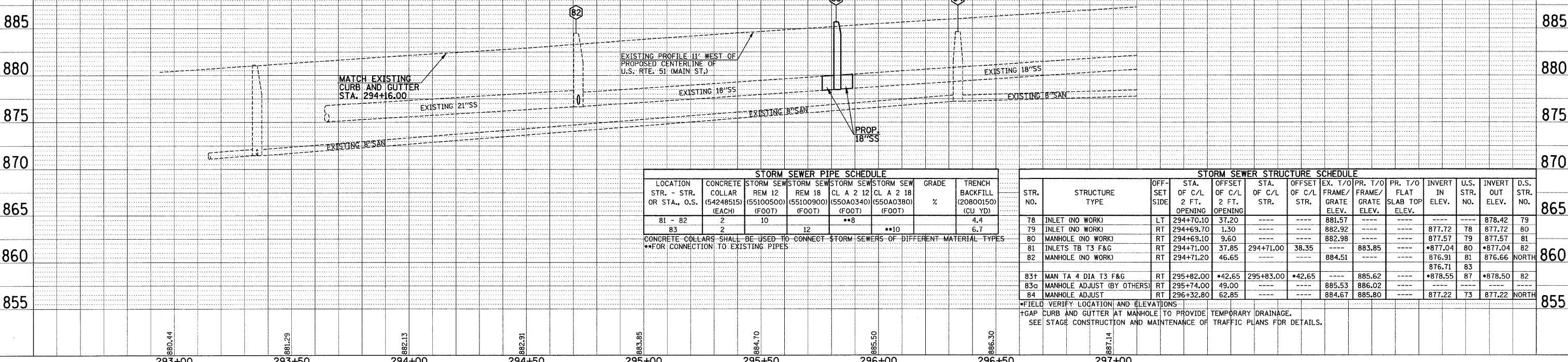
REMOVE EXISTING AGGREGATE SURFACE AND REPLACE WITH TOPSOIL AND SEED FROM BACK OF SIDEWALK TO: RT. 69' FROM STA. 296+85.0 TO STA. 297+00.0

PROPOSED EDGE OF PAVEMENT TABLE

STATION	OFFSET SIDE	EDGE OF PAVEMENT OFFSET DISTANCE	EDGE OF PAVEMENT ELEVATION
294+16.00	RT	35.17'	MATCH EXISTING
294+50.00	RT	35.81'	883.56
295+00.00	RT	37.29'	884.35
295+50.00	RT	39.45'	885.15
296+00.00	RT	42.26'	885.96
296+50.00	RT	45.74'	887.01
297+00.00	RT	47.00'	887.63

BM 505 - TOP CAP BOLT ON FIRE HYDRANT ON EAST SIDE OF MAIN STREET STA. 293+54, 54' LT. ELEV. 885.30

BM 504 - TOP CAP BOLT ON FIRE HYDRANT ON EAST SIDE OF MAIN STREET STA. 296+57, 45' LT. ELEV. 890.67



STORM SEWER PIPE SCHEDULE

LOCATION STR. - STR. OR STA., O.S.	CONCRETE COLLAR (EACH)	STORM SEWER REM 12 (55100500) (FOOT)	STORM SEWER REM 18 (55100900) (FOOT)	STORM SEWER CL A 2 12 (550A0340) (FOOT)	STORM SEWER CL A 2 18 (550A0380) (FOOT)	GRADE %	TRENCH BACKFILL (20800150) (CU YD)
81 - 82	2	10		**8			4.4
83	2		12		**10		6.7

CONCRETE COLLARS SHALL BE USED TO CONNECT STORM SEWERS OF DIFFERENT MATERIAL TYPES **FOR CONNECTION TO EXISTING PIPES

STORM SEWER STRUCTURE SCHEDULE

STR. NO.	STRUCTURE TYPE	OFF-SET SIDE	STA. OF C/L 2 FT. OPENING	OFFSET OF C/L 2 FT. OPENING	STA. OF C/L STR.	OFFSET OF C/L STR.	EX. T/O FRAME/GRATE ELEV.	PR. T/O FRAME/GRATE ELEV.	FLAT SLAB TOP ELEV.	INVERT IN ELEV.	U.S. STR. NO.	INVERT OUT ELEV.	D.S. STR. NO.
78	INLET (NO WORK)	LT	294+70.10	37.20	---	---	881.57	---	---	---	---	878.42	79
79	INLET (NO WORK)	RT	294+69.70	1.30	---	---	882.92	---	---	877.72	78	877.72	80
80	MANHOLE (NO WORK)	RT	294+69.10	9.60	---	---	882.98	---	---	877.57	79	877.57	81
81	INLETS TB T3 F&G	RT	294+71.00	37.85	294+71.00	38.35	---	883.85	---	*877.04	80	*877.04	82
82	MANHOLE (NO WORK)	RT	294+71.20	46.65	---	---	884.51	---	---	876.91	81	876.66	NORTH
83f	MAN TA 4 DIA T3 F&G	RT	295+82.00	*42.65	295+83.00	*42.65	---	885.62	---	*878.55	87	*878.50	82
83g	MANHOLE ADJUST (BY OTHERS)	RT	295+74.00	49.00	---	---	885.53	886.02	---	---	---	---	---
84	MANHOLE ADJUST	RT	296+32.80	62.85	---	---	884.67	885.80	---	877.22	73	877.22	NORTH

*FIELD VERIFY LOCATION AND ELEVATIONS
†GAP CURB AND GUTTER AT MANHOLE TO PROVIDE TEMPORARY DRAINAGE.
SEE STAGE CONSTRUCTION AND MAINTENANCE OF TRAFFIC PLANS FOR DETAILS.