

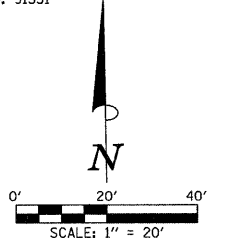
SEC. 16, T.23 N., R.2 E., 3rd P.M.
MCLEAN COUNTY, ILLINOIS

NOTE 1
SUPERELEVATION PAVEMENT TRANSITION ON LT. SIDE FROM STA. 261+95.00 AT -2.00% TO STA. 262+55.04 AT -0.50%. FULL SUPERELEVATION ON RT. SIDE AT +1.00% FROM STA. 253+40.00 TO STA. 262+55.04. SEE PROPOSED TYPICAL SECTIONS AND CROSS SECTION SHEETS FOR ADDITIONAL INFORMATION.

PROPOSED HAMILTON RD. CURVE DATA
P.I. STA. 260+37.94
Δ = 11°00'00"
D = 3°34'52"
T = 154.06'
R = 1600.00'
L = 307.18'
E = 7.40'
P.C. STA. 258+83.88
P.T. STA. 261+91.06
S.E. = TO MATCH U.S. RTE. 51 (MAIN ST.) P.G.L. (SEE NOTE 1 AND S.E. TRANSITION TABLES)

F.A.U. RTE.	SECTION	COUNTY	TOTAL SHEETS	SHEET NO.
6371	93-00295-03-PV	MCLEAN	109	29

STA. 258+00.00 TO STA. 262+05.00
ILLINOIS F.A. PROJ. NO. M-5227(046)
CONTRACT NO. 91351



LEGEND
- PROPOSED PCC DRIVEWAY PAVEMENT (6" FOR P.E. - 8" FOR C.E.)

FOR REMOVAL/RELOCATION PLAN IN THIS AREA SEE SHEET NO. 22.

SEE HORIZONTAL ALIGNMENT LAYOUT AND CONTROL SHEETS FOR ADDITIONAL INFORMATION.

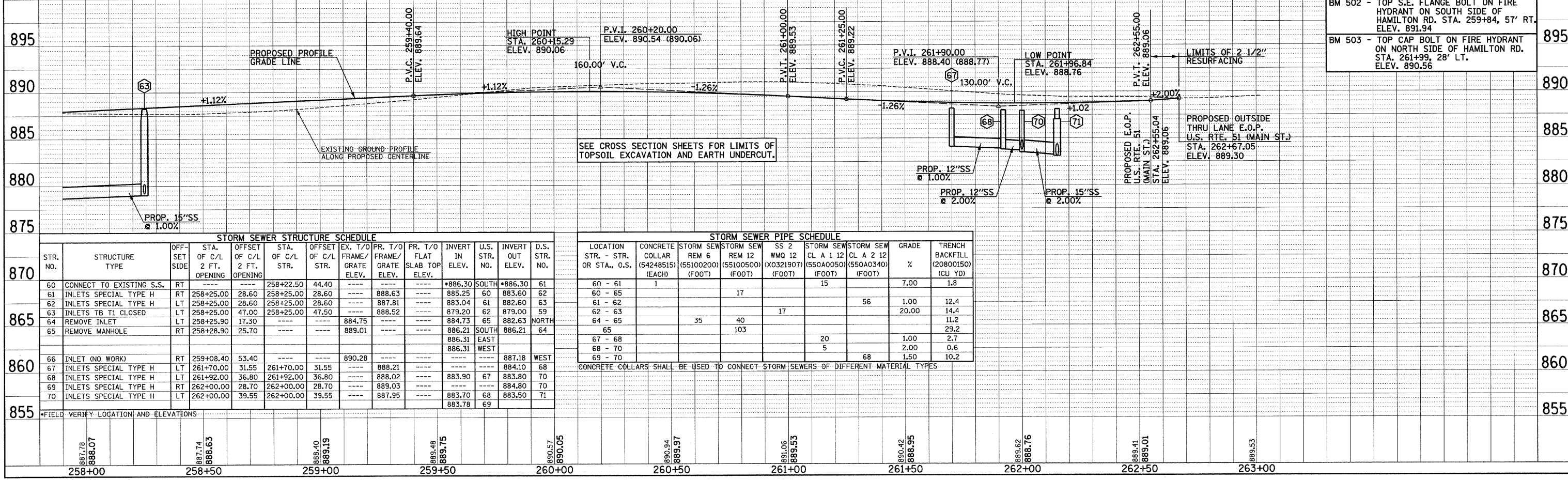
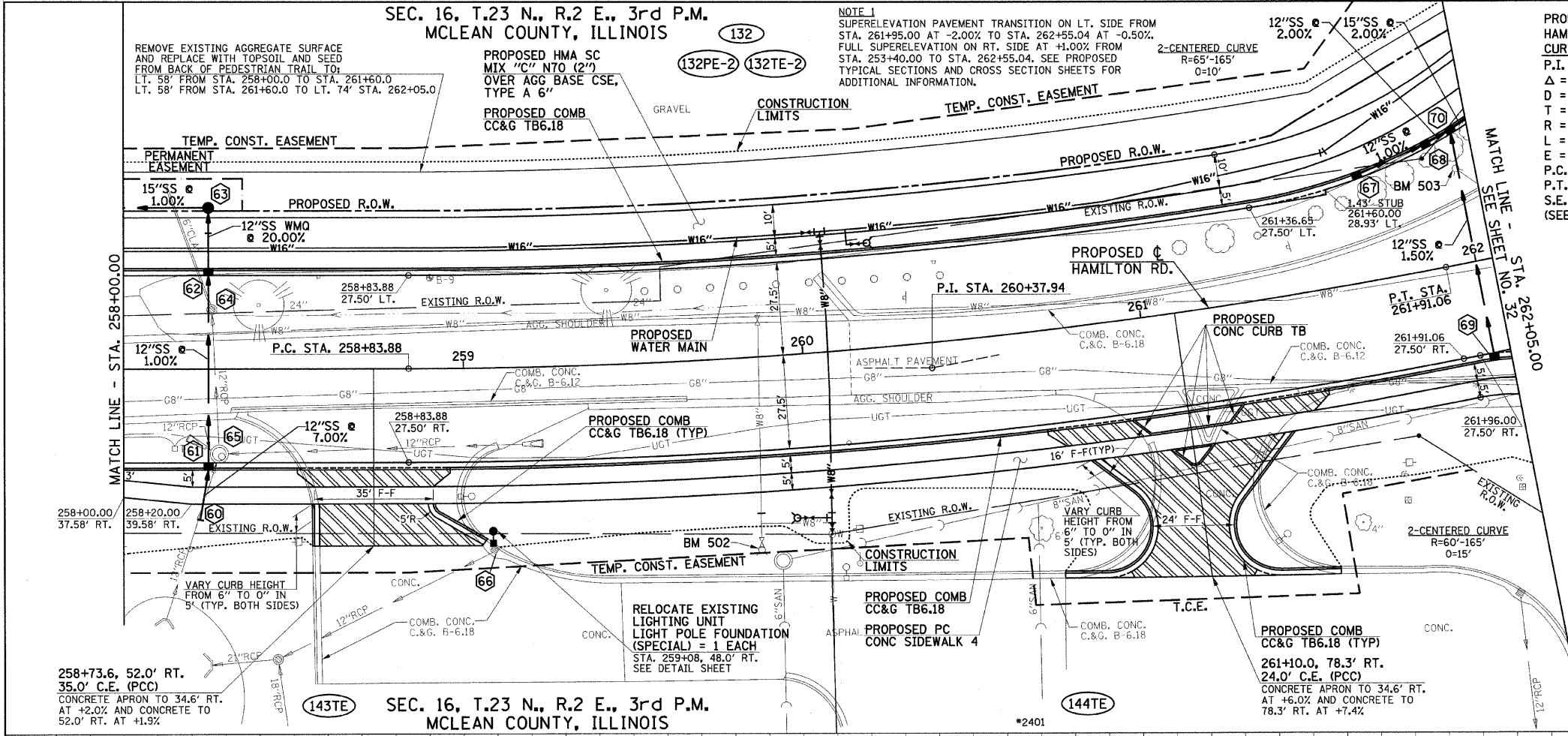
SEE SCHEDULE OF QUANTITIES FOR TYPICAL SECTION PAVEMENT PAY ITEMS AND THEIR LOCATIONS.

SEE PAVEMENT JOINTS, INTERSECTION DETAILS, WATER MAIN, AND SANITARY SEWER PLAN AND PROFILE SHEETS FOR ADDITIONAL INFORMATION.

SEE THE STAGE CONSTRUCTION AND MAINTENANCE OF TRAFFIC PLANS FOR THE VARIOUS STAGES AND CONSTRUCTION SEQUENCES ON HAMILTON RD.

PLAN	DATE
BY	
CHECKED	
DATE	
NO.	

PROFILE	DATE
BY	
CHECKED	
DATE	
NO.	



BM 502 - TOP S.E. FLANGE BOLT ON FIRE HYDRANT ON SOUTH SIDE OF HAMILTON RD. STA. 259+84, 57' RT. ELEV. 891.94
BM 503 - TOP CAP BOLT ON FIRE HYDRANT ON NORTH SIDE OF HAMILTON RD. STA. 261+99, 28' LT. ELEV. 890.56

STORM SEWER STRUCTURE SCHEDULE

STR. NO.	STRUCTURE TYPE	OFF-SET SIDE	STA. OF C/L 2 FT. OPENING	OFFSET OF C/L 2 FT. OPENING	STA. OF C/L STR.	OFFSET OF C/L STR.	EX. T/O FRAME/GRATE ELEV.	PR. T/O FRAME/GRATE ELEV.	PR. T/O FLAT SLAB TOP ELEV.	INVERT IN ELEV.	U.S. STR. NO.	INVERT OUT ELEV.	D.S. STR. NO.
60	CONNECT TO EXISTING S.S.	RT	---	---	258+22.50	44.40	---	---	---	886.30	SOUTH	886.30	61
61	INLETS SPECIAL TYPE H	RT	258+25.00	28.60	258+25.00	28.60	888.63	---	---	885.25	60	883.60	62
62	INLETS SPECIAL TYPE H	LT	258+25.00	28.60	258+25.00	28.60	887.81	---	---	883.04	61	882.60	63
63	INLETS TB TI CLOSED	LT	258+25.00	47.00	258+25.00	47.50	888.52	---	---	879.20	62	879.00	59
64	REMOVE INLET	LT	258+25.90	17.30	---	---	884.75	---	---	884.73	65	882.63	NORTH
65	REMOVE MANHOLE	RT	258+28.90	25.70	---	---	889.01	---	---	886.21	SOUTH	886.21	64
										886.31	EAST		
										886.31	WEST		
66	INLET (NO WORK)	RT	259+08.40	53.40	---	---	890.28	---	---	---	---	887.18	WEST
67	INLETS SPECIAL TYPE H	LT	261+70.00	31.55	261+70.00	31.55	888.21	---	---	---	---	884.10	68
68	INLETS SPECIAL TYPE H	LT	261+92.00	36.80	261+92.00	36.80	888.02	---	---	883.90	67	883.80	70
69	INLETS SPECIAL TYPE H	RT	262+00.00	28.70	262+00.00	28.70	889.03	---	---	---	---	884.80	70
70	INLETS SPECIAL TYPE H	LT	262+00.00	39.55	262+00.00	39.55	887.95	---	---	883.70	68	883.50	71

STORM SEWER PIPE SCHEDULE

LOCATION STR. - STR. OR STA., O.S.	CONCRETE COLLAR (54248515) (EACH)	STORM SEW REM 6 (55100200) (FOOT)	STORM SEW SS 2 (55100500) (FOOT)	SS 2 WMO 12 (X0321907) (FOOT)	STORM SEW CL A 1 12 (550A0050) (FOOT)	STORM SEW CL A 2 12 (550A0340) (FOOT)	GRADE %	TRENCH BACKFILL (20800150) (CU YD)
60 - 61	1				15		7.00	1.8
60 - 65				17				
61 - 62						56	1.00	12.4
62 - 63							20.00	14.4
64 - 65		35	40	17				11.2
65			103					29.2
67 - 68					20		1.00	2.7
68 - 70					5		2.00	0.6
69 - 70						68	1.50	10.2

CONCRETE COLLARS SHALL BE USED TO CONNECT STORM SEWERS OF DIFFERENT MATERIAL TYPES