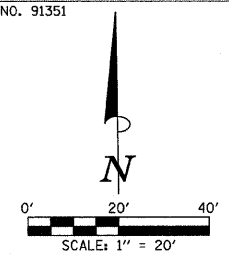
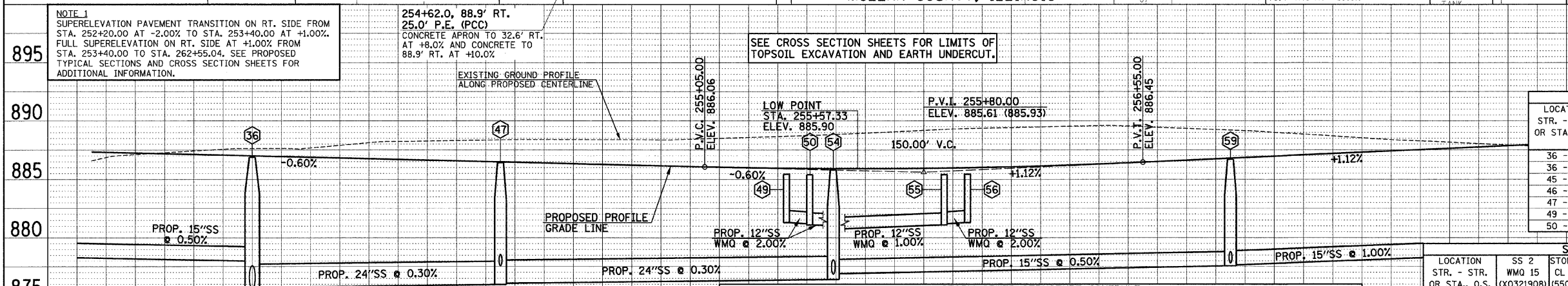


| F.A.U. RTE. | SECTION | COUNTY | TOTAL SHEETS | SHEET NO. |
|------------------------------------|----------------|-------------------|--------------|-----------|
| 6371 | 93-00295-03-PV | MCLEAN | 109 | 28 |
| STA. 253+00.00 | | TO STA. 258+00.00 | | |
| ILLINOIS F.A. PROJ. NO. M-527(046) | | | | |
| CONTRACT NO. 91351 | | | | |



- LEGEND**
- PROPOSED PCC DRIVEWAY PAVEMENT (6" FOR P.E. - 8" FOR C.E.)
 - PROPOSED AGGREGATE SURFACE COURSE, TYPE B (8" THICK)
- FOR REMOVAL/RELOCATION PLAN IN THIS AREA SEE SHEET NO. 21.
- SEE HORIZONTAL ALIGNMENT LAYOUT AND CONTROL SHEETS FOR ADDITIONAL INFORMATION.
- SEE SCHEDULE OF QUANTITIES FOR TYPICAL SECTION PAVEMENT PAY ITEMS AND THEIR LOCATIONS.
- SEE PAVEMENT JOINTS, WATER MAIN, AND SANITARY SEWER PLAN AND PROFILE SHEETS FOR ADDITIONAL INFORMATION.
- SEE THE STAGE CONSTRUCTION AND MAINTENANCE OF TRAFFIC PLANS FOR THE VARIOUS STAGES AND CONSTRUCTION SEQUENCES ON HAMILTON RD.



| STORM SEWER PIPE SCHEDULE | | | | | | |
|------------------------------------|-------------------------------|-------------------------------|---------------------------------------|---------------------------------------|---------|------------------------------------|
| LOCATION STR. - STR. OR STA., O.S. | SS 1 WMO 12 (X0321905) (FOOT) | SS 2 WMO 12 (X0321907) (FOOT) | STORM SEW CL A 2 12 (550A0340) (FOOT) | STORM SEW CL A 2 15 (550A0410) (FOOT) | GRADE % | TRENCH BACKFILL (20800150) (CU YD) |
| 36 - 44 | | 16 | | | 20.00 | 13.2 |
| 36 - 47 | | | | 80 | 0.30 | 144.0 |
| 45 - 46 | | | 56 | | 1.00 | 9.7 |
| 46 - 47 | | 16 | | | 20.00 | 13.2 |
| 47 - 54 | | | | 109 | 0.30 | 176.1 |
| 49 - 50 | 5 | | | | 2.00 | 0.6 |
| 50 - 53 | 5 | | | | 2.00 | 0.7 |

| STORM SEWER PIPE SCHEDULE | | | | | | | | |
|------------------------------------|-------------------------------|--------------------------------------|----------------------------|-----------------------------|---------------------------------------|---------------------------------------|---------|------------------------------------|
| LOCATION STR. - STR. OR STA., O.S. | SS 2 WMO 15 (X0321908) (FOOT) | STORM SEW CL B 1 4 (550B0010) (FOOT) | CL B 1 8 (550B0030) (FOOT) | CL A 1 12 (550A0050) (FOOT) | STORM SEW CL A 2 12 (550A0340) (FOOT) | STORM SEW CL A 2 15 (550A0360) (FOOT) | GRADE % | TRENCH BACKFILL (20800150) (CU YD) |
| 51 - 52 | | | | | 5 | | 2.00 | 0.6 |
| 51 - 51a | | | | | | 12 | 3.00 | 2.2 |
| 51a - 51b | | | | | | | 3.00 | |
| 51a - 52a | | | | | | 56 | 1.00 | 10.8 |
| 51 - 53 | | | | | | | 20.00 | 13.9 |
| 53 - 54 | 16 | | | | | | | |

| STORM SEWER PIPE SCHEDULE | | | | | | | | |
|------------------------------------|-----------------------------------|-------------------------------|-------------------------------|-------------------------------|---------------------------------------|---------------------------------------|---------|------------------------------------|
| LOCATION STR. - STR. OR STA., O.S. | CONCRETE COLLAR (54248515) (EACH) | SS 1 WMO 12 (X0321905) (FOOT) | SS 2 WMO 12 (X0321907) (FOOT) | SS 2 WMO 15 (X0321908) (FOOT) | STORM SEW CL A 2 12 (550A0340) (FOOT) | STORM SEW CL A 2 15 (550A0360) (FOOT) | GRADE % | TRENCH BACKFILL (20800150) (CU YD) |
| 53 - 55 | | | | 35 | | | 1.00 | 6.1 |
| 55 - 56 | | | | | | | 2.00 | 0.6 |
| 54 - 54a | | | 5 | | | | 4.00 | 13.5 |
| 54 - 59 | | | | | | 40 | 0.50 | 174.4 |
| 57 - 58 | | | | | | 56 | 1.00 | 9.7 |
| 58 - 58a | | | | | | | 2.00 | 0.6 |
| 58 - 59 | | | | 5 | | | 20.00 | 10.9 |
| 59 - 63 | 1 | | | 20 | | 117 | 1.00 | 184.1 |

| STORM SEWER STRUCTURE SCHEDULE | | | | | | | | | | | | | |
|--------------------------------|------------------------|--------------|---------------------------|-----------------------------|------------------|--------------------|---------------------------|---------------------------|-----------------------------|-----------------|---------------|------------------|---------------|
| STR. NO. | STRUCTURE TYPE | OFF-SET SIDE | STA. OF C/L 2 FT. OPENING | OFFSET OF C/L 2 FT. OF STR. | STA. OF C/L STR. | OFFSET OF C/L STR. | EX. T/O FRAME/GRATE ELEV. | PR. T/O FRAME/GRATE ELEV. | PR. T/O FLAT SLAB TOP ELEV. | INVERT IN ELEV. | U.S. STR. NO. | INVERT OUT ELEV. | D.S. STR. NO. |
| 36 | MAN TA 5 DIA T1 CLOSED | LT | 253+50.00 | 46.00 | 253+50.00 | 47.50 | 887.15 | 887.15 | 887.15 | 878.00 | 33 | 875.60 | 37 |
| 44 | INLETS SPECIAL TYPE H | LT | 253+50.00 | 28.60 | 253+50.00 | 28.60 | 886.44 | 886.44 | 886.44 | 881.25 | 36 | 881.25 | 36 |
| 45 | INLETS SPECIAL TYPE H | RT | 254+35.00 | 28.60 | 254+35.00 | 28.60 | 886.75 | 886.75 | 886.75 | 882.20 | 46 | 882.20 | 46 |
| 46 | INLETS SPECIAL TYPE H | LT | 254+35.00 | 28.60 | 254+35.00 | 28.60 | 885.93 | 885.93 | 885.93 | 881.64 | 45 | 880.75 | 47 |
| 47 | MAN TA 5 DIA T1 CLOSED | LT | 254+35.00 | 46.00 | 254+35.00 | 47.50 | 886.64 | 886.64 | 886.64 | 877.55 | 46 | 875.95 | 36 |
| 48 | REMOVE INLET | LT | 255+04.00 | 4.80 | 255+04.00 | 4.80 | 887.12 | 887.12 | 887.12 | 876.07 | 54 | 876.07 | 54 |
| 49 | INLETS SPECIAL TYPE H | LT | 255+33.00 | 28.60 | 255+33.00 | 28.60 | 885.39 | 885.39 | 885.39 | 881.20 | 49 | 881.20 | 50 |
| 50 | INLETS SPECIAL TYPE H | LT | 255+41.00 | 28.60 | 255+41.00 | 28.60 | 885.37 | 885.37 | 885.37 | 881.20 | 49 | 881.20 | 53 |
| 51 | INLETS SPECIAL TYPE H | RT | 255+49.00 | 28.60 | 255+49.00 | 28.60 | 886.18 | 886.18 | 886.18 | 882.64 | 51a | 881.40 | 53 |
| 52 | INLETS SPECIAL TYPE H | RT | 255+57.00 | 28.60 | 255+57.00 | 28.60 | 886.18 | 886.18 | 886.18 | 881.90 | 52 | 882.00 | 51 |
| 51a | RD INLETS TB TB GRATE | RT | 255+49.00 | 42.50 | 255+49.00 | 42.00 | 888.70 | 888.70 | 888.70 | 885.83 | 51b | 883.00 | 51 |

| STORM SEWER STRUCTURE SCHEDULE | | | | | | | | | | | | | |
|--------------------------------|------------------------|--------------|---------------------------|-----------------------------|------------------|--------------------|---------------------------|---------------------------|-----------------------------|-----------------|---------------|------------------|---------------|
| STR. NO. | STRUCTURE TYPE | OFF-SET SIDE | STA. OF C/L 2 FT. OPENING | OFFSET OF C/L 2 FT. OF STR. | STA. OF C/L STR. | OFFSET OF C/L STR. | EX. T/O FRAME/GRATE ELEV. | PR. T/O FRAME/GRATE ELEV. | PR. T/O FLAT SLAB TOP ELEV. | INVERT IN ELEV. | U.S. STR. NO. | INVERT OUT ELEV. | D.S. STR. NO. |
| 51b | INLETS TA T8 GRATE | RT | 255+08.00 | 42.50 | 255+08.00 | 42.50 | 889.60 | 889.60 | 889.60 | 887.50 | ** | 887.00 | 51a |
| 52a | INLETS TA T8 GRATE | RT | 255+54.00 | 42.50 | 255+54.00 | 42.50 | 888.70 | 888.70 | 888.70 | 885.00 | 51a | 885.00 | 51a |
| 53 | INLETS SPECIAL TYPE H | LT | 255+49.00 | 28.60 | 255+49.00 | 28.60 | 885.36 | 885.36 | 885.36 | 881.00 | 50 | 880.05 | 54 |
| 54 | MAN TA 5 DIA T1 CLOSED | LT | 255+49.00 | 46.00 | 255+49.00 | 47.50 | 886.07 | 886.07 | 886.07 | 880.84 | 51 | 880.84 | 51 |
| 54a | INLETS TA T1 OPEN | LT | 255+92.00 | 56.00 | 255+92.00 | 56.00 | 884.75 | 884.75 | 884.75 | 876.85 | 53 | 876.85 | 47 |
| 55 | INLETS SPECIAL TYPE H | LT | 255+87.00 | 28.60 | 255+87.00 | 28.60 | 885.40 | 885.40 | 885.40 | 881.20 | 56 | 881.20 | 54 |
| 56 | INLETS SPECIAL TYPE H | LT | 255+95.00 | 28.60 | 255+95.00 | 28.60 | 885.44 | 885.44 | 885.44 | 881.30 | 55 | 881.30 | 55 |
| 57 | INLETS SPECIAL TYPE H | RT | 256+85.00 | 28.60 | 256+85.00 | 28.60 | 887.06 | 887.06 | 887.06 | 881.94 | 57 | 881.00 | 58 |
| 58 | INLETS SPECIAL TYPE H | LT | 256+85.00 | 28.60 | 256+85.00 | 28.60 | 886.24 | 886.24 | 886.24 | 882.00 | 58a | 882.00 | 58 |
| 58a | INLETS SPECIAL TYPE H | LT | 256+93.00 | 28.60 | 256+93.00 | 28.60 | 886.33 | 886.33 | 886.33 | 877.80 | 58 | 877.55 | 54 |
| 59 | MAN TA 4 DIA T1 CLOSED | LT | 256+85.00 | 46.50 | 256+85.00 | 47.50 | 886.95 | 886.95 | 886.95 | 877.63 | 63 | 877.63 | 54 |