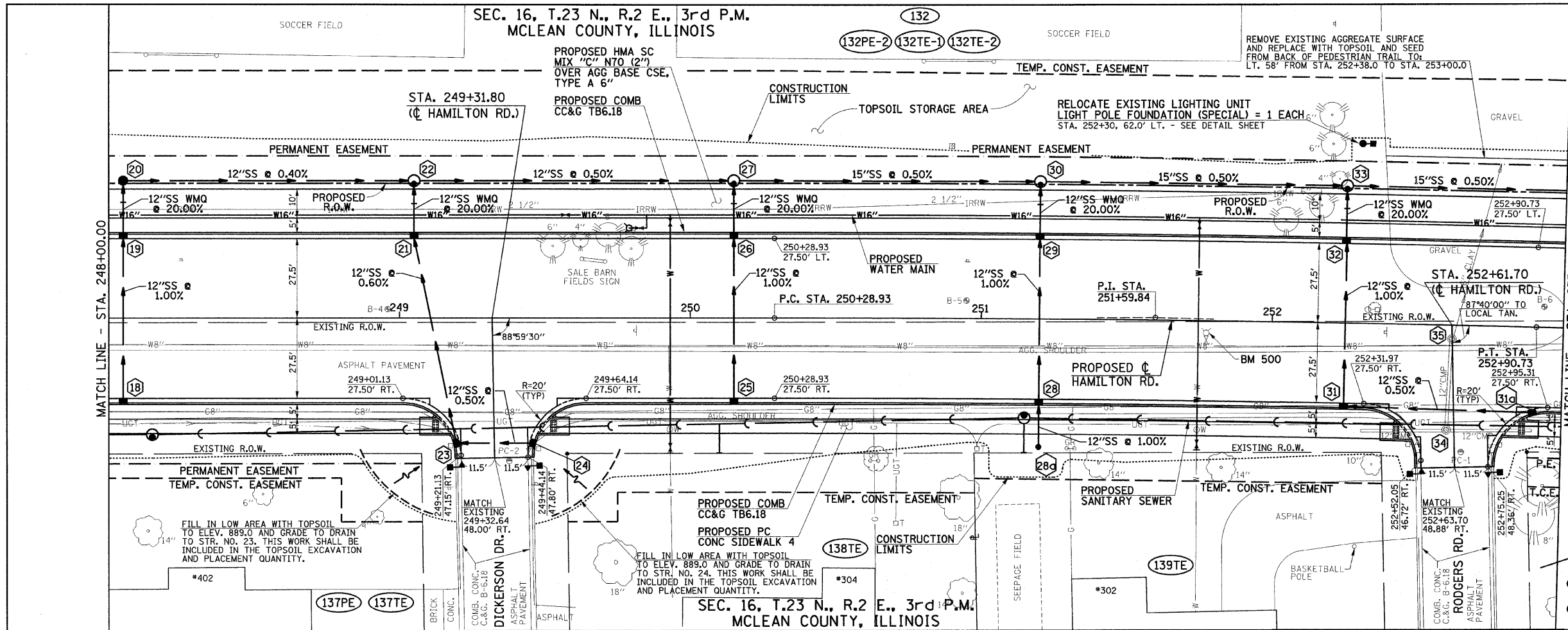


DATE: \_\_\_\_\_ BY: \_\_\_\_\_  
 SURVEYED: \_\_\_\_\_ PLOTTED: \_\_\_\_\_  
 CHECKED: \_\_\_\_\_ ALIGNED: \_\_\_\_\_  
 NOTE BOOK NO.: \_\_\_\_\_  
 PLAN NO.: \_\_\_\_\_

DATE: \_\_\_\_\_ BY: \_\_\_\_\_  
 SURVEYED: \_\_\_\_\_ PLOTTED: \_\_\_\_\_  
 CHECKED: \_\_\_\_\_ GRADES CHECKED: \_\_\_\_\_  
 NOTE BOOK NO.: \_\_\_\_\_  
 PROFILE NO.: \_\_\_\_\_



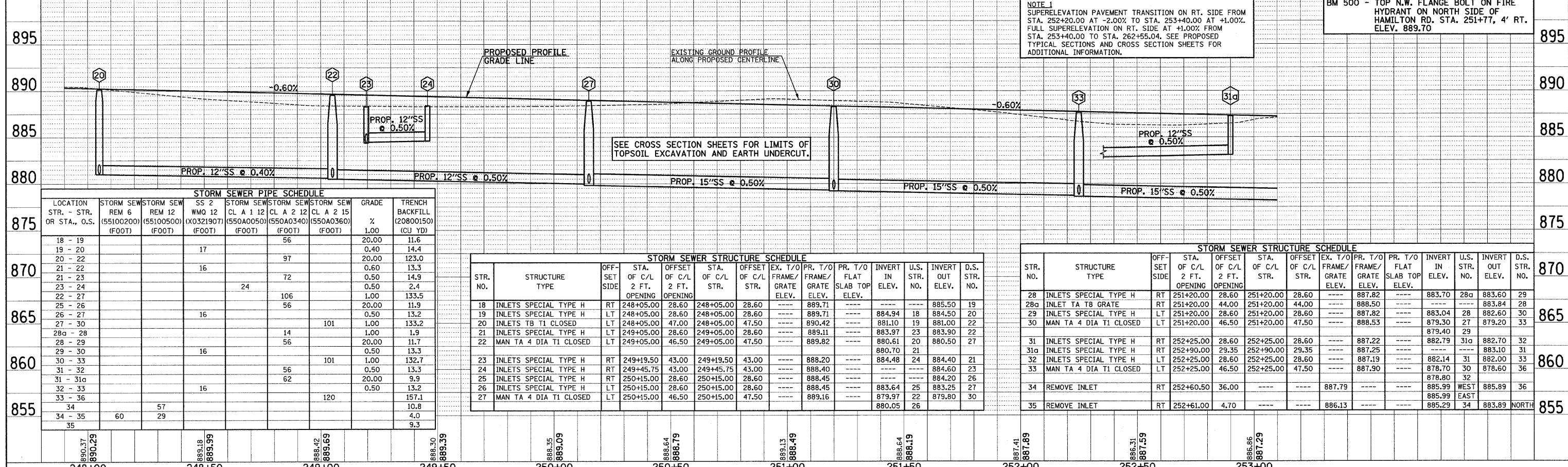
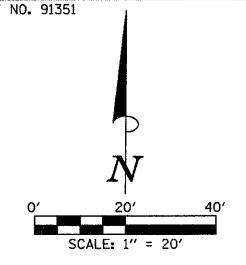
**PROPOSED HAMILTON RD. CURVE DATA**  
 P.T. STA. 251+59.84  
 Δ = 130°00"  
 D = 0°34'23"  
 T = 130.91'  
 R = 10000.00'  
 L = 261.80'  
 E = 0.86'  
 P.C. STA. 250+28.93  
 P.T. STA. 252+90.73  
 S.E. = SEE NOTE 1 AND S.E. TRANSITION TABLES

F.A.U. RTE.	SECTION	COUNTY	TOTAL SHEETS	SHEET NO.
6371	93-00295-03-PV	MCLEAN	109	27

CONTRACT NO. 91351

ILLINOIS F.A. PROJ. NO. M-5227(046)

- LEGEND**  
 [Symbol] PROPOSED SIDEWALK RAMP (SEE DETAIL)
- FOR REMOVAL/RELOCATION PLAN IN THIS AREA SEE SHEET NO. 21.
- SEE HORIZONTAL ALIGNMENT LAYOUT AND CONTROL SHEETS FOR ADDITIONAL INFORMATION.
- SEE SCHEDULE OF QUANTITIES FOR TYPICAL SECTION PAVEMENT PAY ITEMS AND THEIR LOCATIONS.
- SEE PAVEMENT JOINTS, INTERSECTION DETAILS, WATER MAIN, SANITARY SEWER, AND STORM SEWER OUTFALL PLAN AND PROFILE SHEETS FOR ADDITIONAL INFORMATION.
- SEE THE STAGE CONSTRUCTION AND MAINTENANCE OF TRAFFIC PLANS FOR THE VARIOUS STAGES AND CONSTRUCTION SEQUENCES ON HAMILTON RD.



LOCATION STR. - STR. OR STA., O.S.	STORM SEWER PIPE SCHEDULE						GRADE %	TRENCH BACKFILL (20800)150 (CU YD)
	STORM SEW REM 6 (55100200) (FOOT)	STORM SEW REM 12 (55100500) (FOOT)	SS 2 WMO 12 (X0321907) (FOOT)	CL A 1 12 (550A0050) (FOOT)	CL A 2 12 (550A0340) (FOOT)	CL A 2 15 (550A0360) (FOOT)		
18 - 19						56	20.00	11.6
19 - 20						56	0.40	14.4
20 - 22			17			97	20.00	123.0
21 - 22			16			72	0.60	13.3
23 - 24				24		72	0.50	14.9
22 - 27						106	1.00	133.5
25 - 26						56	20.00	11.9
26 - 27						56	0.50	13.2
27 - 30						101	1.00	133.2
28a - 28						14	1.00	1.9
28 - 29						56	20.00	11.7
29 - 30						56	0.50	13.3
30 - 33						101	1.00	132.7
31 - 32						56	0.50	13.3
31 - 31a						62	20.00	9.9
32 - 33						16	0.50	13.2
33 - 36						120		157.1
34								10.8
34 - 35	60	29						4.0
35								9.3

STR. NO.	STRUCTURE TYPE	OFF-SET SIDE	STA. OF C/L OF OPENING	OFF-SET OF C/L OF STR.	STA. OF C/L OF STR.	OFF-SET OF C/L OF STR.	EX. T/O FRAME/GRATE ELEV.	PR. T/O FRAME/GRATE ELEV.	PR. T/O FLAT SLAB TOP ELEV.	INVERT IN ELEV.	U.S. STR. NO.	INVERT OUT ELEV.	D.S. STR. NO.
18	INLETS SPECIAL TYPE H	RT	248+05.00	28.60	248+05.00	28.60	889.71	889.71	888.50	19		885.50	19
19	INLETS SPECIAL TYPE H	LT	248+05.00	28.60	248+05.00	28.60	889.71	889.71	884.50	20		884.50	20
20	INLETS TB TI CLOSED	LT	248+05.00	47.00	248+05.00	47.50	890.42	890.42	881.10	21		881.10	21
21	INLETS SPECIAL TYPE H	LT	249+05.00	28.60	249+05.00	28.60	889.11	889.11	883.90	22		883.90	22
22	MAN TA 4 DIA TI CLOSED	LT	249+05.00	46.50	249+05.00	47.50	889.82	889.82	880.61	20		880.61	20
									880.70	21		880.70	21
23	INLETS SPECIAL TYPE H	RT	249+19.50	43.00	249+19.50	43.00	888.20	888.20	884.48	24		884.48	24
24	INLETS SPECIAL TYPE H	RT	249+45.75	43.00	249+45.75	43.00	888.40	888.40	884.60	23		884.60	23
25	INLETS SPECIAL TYPE H	RT	250+15.00	28.60	250+15.00	28.60	888.45	888.45	884.20	26		884.20	26
26	INLETS SPECIAL TYPE H	LT	250+15.00	28.60	250+15.00	28.60	888.45	888.45	883.64	25		883.64	25
27	MAN TA 4 DIA TI CLOSED	LT	250+15.00	46.50	250+15.00	47.50	889.16	889.16	879.97	22		879.97	22
									880.05	26		880.05	26

STR. NO.	STRUCTURE TYPE	OFF-SET SIDE	STA. OF C/L 2 FT. OF OPENING	OFF-SET OF C/L 2 FT. OF STR.	STA. OF C/L OF STR.	OFF-SET OF C/L OF STR.	EX. T/O FRAME/GRATE ELEV.	PR. T/O FRAME/GRATE ELEV.	PR. T/O FLAT SLAB TOP ELEV.	INVERT IN ELEV.	U.S. STR. NO.	INVERT OUT ELEV.	D.S. STR. NO.
28	INLETS SPECIAL TYPE H	RT	251+20.00	28.60	251+20.00	28.60	887.82	887.82	883.70	28a		883.60	29
28a	INLET TA TB GRATE	RT	251+20.00	44.00	251+20.00	44.00	888.50	888.50	883.84	28		883.84	28
29	INLETS SPECIAL TYPE H	LT	251+20.00	28.60	251+20.00	28.60	887.82	887.82	883.04	28		882.60	30
30	MAN TA 4 DIA TI CLOSED	LT	251+20.00	46.50	251+20.00	47.50	888.53	888.53	879.30	27		879.20	33
									879.40	29		879.40	29
31	INLETS SPECIAL TYPE H	RT	252+25.00	28.60	252+25.00	28.60	887.22	887.22	882.79	31a		882.70	31
31a	INLETS SPECIAL TYPE H	RT	252+90.00	29.35	252+90.00	29.35	887.25	887.25	883.10	30		883.10	32
32	INLETS SPECIAL TYPE H	LT	252+25.00	28.60	252+25.00	28.60	887.19	887.19	882.14	31		882.00	33
33	MAN TA 4 DIA TI CLOSED	LT	252+25.00	46.50	252+25.00	47.50	887.90	887.90	878.70	30		878.60	36
									878.80	32		878.80	32
34	REMOVE INLET	RT	252+60.50	36.00			887.79		885.99	WEST		885.89	36
									885.99	EAST		885.99	
35	REMOVE INLET	RT	252+61.00	4.70			886.13		885.29	34		883.89	NORTH
									885.29			883.89	