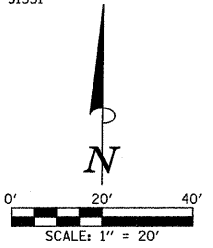


SEC. 16, T.23 N., R.2 E., 3rd P.M.  
MCLEAN COUNTY, ILLINOIS

PROPOSED HAMILTON RD. CURVE DATA

P.I. STA. 242+24.41 L = 254.16'  
 $\Delta = 4^{\circ}33'03''$  E = 2.52'  
D = 1'47'26" P.C. STA. 240+97.26  
T = 127.15' P.T. STA. 243+51.42  
R = 3200.00' S.E. = NONE

F.A.U. RTE.	SECTION	COUNTY	TOTAL SHEETS	SHEET NO.
6371	93-00295-03-PV	MCLEAN	109	26
STA. 243+00.00		TO STA. 248+00.00		
ILLINOIS F.A. PROJ. NO. M-5227(046)				
CONTRACT NO. 91351				



**LEGEND**  
 - PROPOSED PCC DRIVEWAY PAVEMENT (6" FOR P.E. - 8" FOR C.E.)

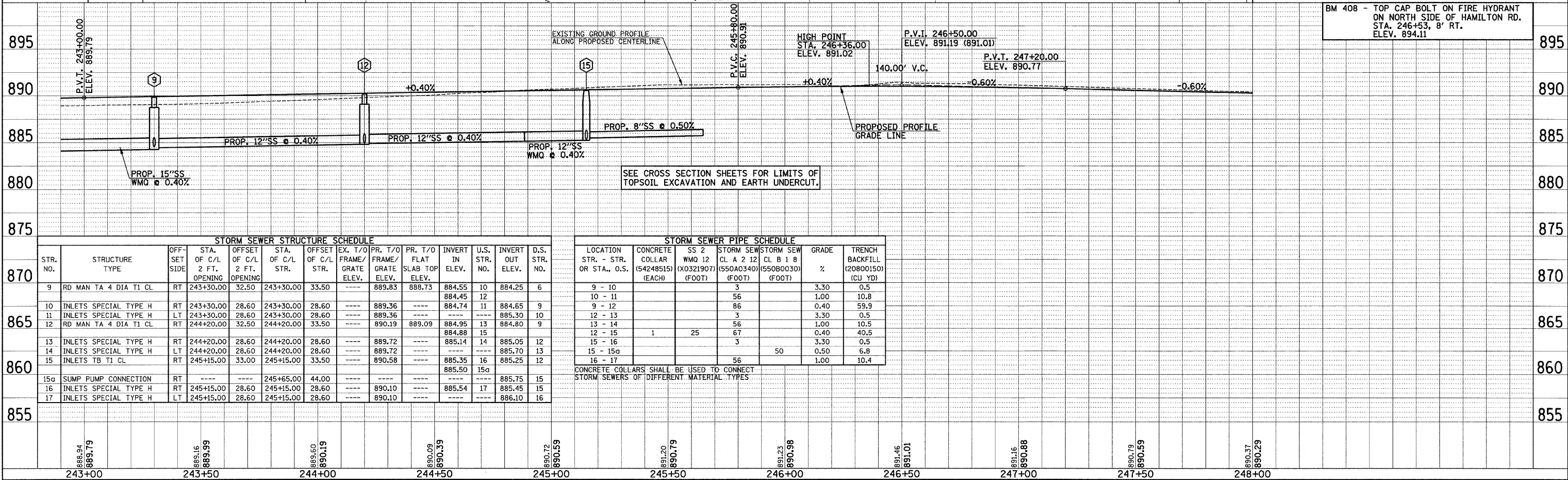
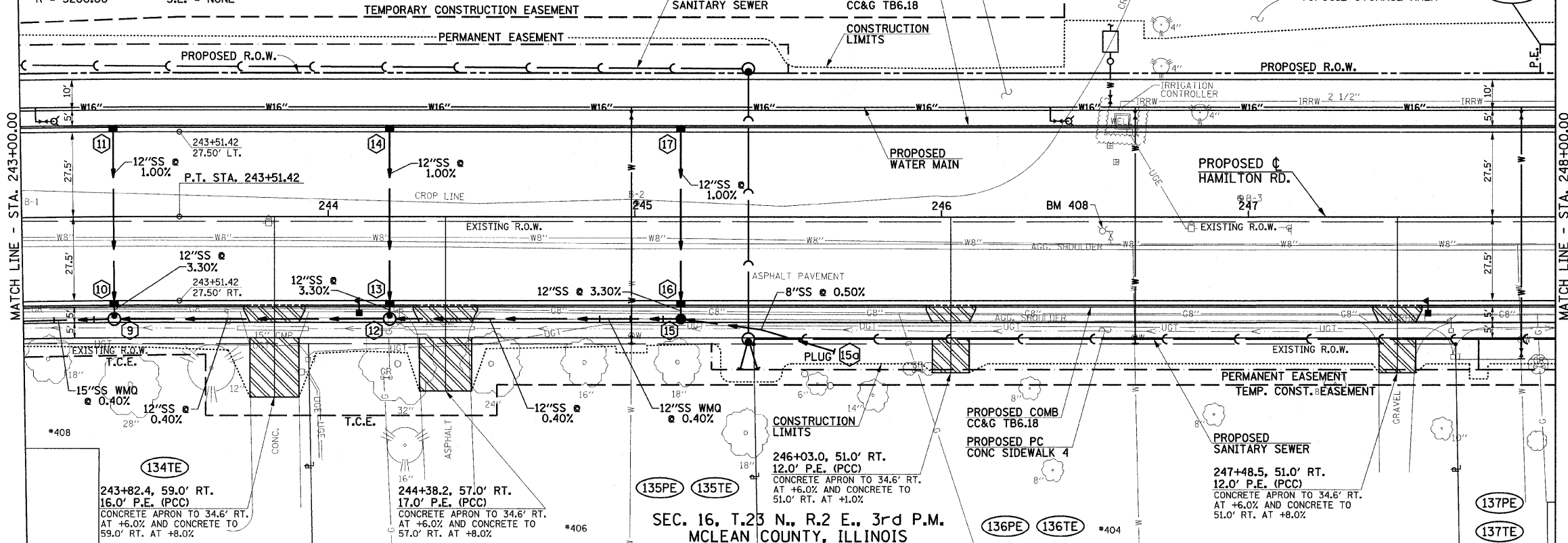
FOR REMOVAL/RELOCATION PLAN IN THIS AREA SEE SHEET NO. 20.

SEE HORIZONTAL ALIGNMENT LAYOUT AND CONTROL SHEETS FOR ADDITIONAL INFORMATION.

SEE SCHEDULE OF QUANTITIES FOR TYPICAL SECTION PAVEMENT PAY ITEMS AND THEIR LOCATIONS.

SEE PAVEMENT JOINTS, WATER MAIN, AND SANITARY SEWER PLAN AND PROFILE SHEETS FOR ADDITIONAL INFORMATION.

SEE THE STAGE CONSTRUCTION AND MAINTENANCE OF TRAFFIC PLANS FOR THE VARIOUS STAGES AND CONSTRUCTION SEQUENCES ON HAMILTON RD.



BM 408 - TOP CAP BOLT ON FIRE HYDRANT ON NORTH SIDE OF HAMILTON RD. STA. 246+53, 8' RT. ELEV. 894.11

SEE CROSS SECTION SHEETS FOR LIMITS OF TOPSOIL EXCAVATION AND EARTH UNDERCUT.

STR. NO.	STRUCTURE TYPE	OFF-SET SIDE	STA. OF C/L 2 FT. OPENING	OFFSET OF C/L 2 FT. OF STR.	STA. OF C/L STR.	OFFSET OF C/L STR.	EX. T/O FRAME/GRATE ELEV.	PR. T/O FRAME/GRATE ELEV.	PR. T/O FLAT SLAB TOP ELEV.	INVERT IN ELEV.	U.S. STR. NO.	INVERT OUT ELEV.	D.S. STR. NO.
9	RD MAN TA 4 DIA T1 CL	RT	243+30.00	32.50	243+30.00	33.50	---	889.83	888.73	884.55	10	884.25	6
10	INLETS SPECIAL TYPE H	RT	243+30.00	28.60	243+30.00	28.60	---	889.36	---	884.74	11	884.65	9
11	INLETS SPECIAL TYPE H	LT	243+30.00	28.60	243+30.00	28.60	---	889.36	---	---	---	885.30	10
12	RD MAN TA 4 DIA T1 CL	RT	244+20.00	32.50	244+20.00	33.50	---	890.19	889.09	884.95	13	884.80	9
13	INLETS SPECIAL TYPE H	RT	244+20.00	28.60	244+20.00	28.60	---	889.72	---	885.14	14	885.05	12
14	INLETS SPECIAL TYPE H	LT	244+20.00	28.60	244+20.00	28.60	---	889.72	---	---	---	885.70	13
15	INLETS TB T1 CL	RT	245+15.00	33.00	245+15.00	33.50	---	890.58	---	885.35	16	885.25	12
15a	SUMP PUMP CONNECTION	RT	---	---	245+65.00	44.00	---	---	---	---	---	885.75	15
16	INLETS SPECIAL TYPE H	RT	245+15.00	28.60	245+15.00	28.60	---	890.10	---	885.54	17	885.45	15
17	INLETS SPECIAL TYPE H	LT	245+15.00	28.60	245+15.00	28.60	---	890.10	---	---	---	886.10	16

LOCATION STR. - STR. OR STA., O.S.	CONCRETE COLLAR (54248515) (EACH)	SS 2 WMQ 12 (X0321907) (FOOT)	STORM SEW CL A 2 12 (550A0340) (FOOT)	STORM SEW CL B 1 8 (550B0030) (FOOT)	GRADE %	TRENCH BACKFILL (20800150) (CU YD)
9 - 10			3		3.30	0.5
10 - 11			56		1.00	10.8
9 - 12			86		0.40	59.9
12 - 13			3		3.30	0.5
13 - 14			56		1.00	10.5
12 - 15	1	25	67		0.40	40.5
15 - 16			3		3.30	0.5
15 - 15a				50	0.50	6.8
16 - 17			56		1.00	10.4

CONCRETE COLLARS SHALL BE USED TO CONNECT STORM SEWERS OF DIFFERENT MATERIAL TYPES