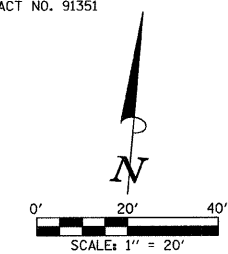


SEC. 16, T.23 N., R.2 E., 3rd P.M.
MCLEAN COUNTY, ILLINOIS

PROPOSED HAMILTON RD.
CURVE DATA
P.I. STA. 242+24.41
Δ = 4°33'03"
D = 1°47'26"
T = 127.15'
R = 3200.00'
L = 254.16'
E = 2.52'
P.C. STA. 240+97.26
P.T. STA. 243+51.42
S.E. = NONE

F.A.U. RTE.	SECTION	COUNTY	TOTAL SHEETS	SHEET NO.
6371	93-00295-03-PV	MCLEAN	109	25
STA. 238+00.00		TO STA. 243+00.00		
ILLINOIS F.A. PROJ. NO. M-5227(046)				
CONTRACT NO. 91351				



LEGEND
 PROPOSED PCC DRIVEWAY PAVEMENT
 (6" FOR P.E. - 8" FOR C.E.)

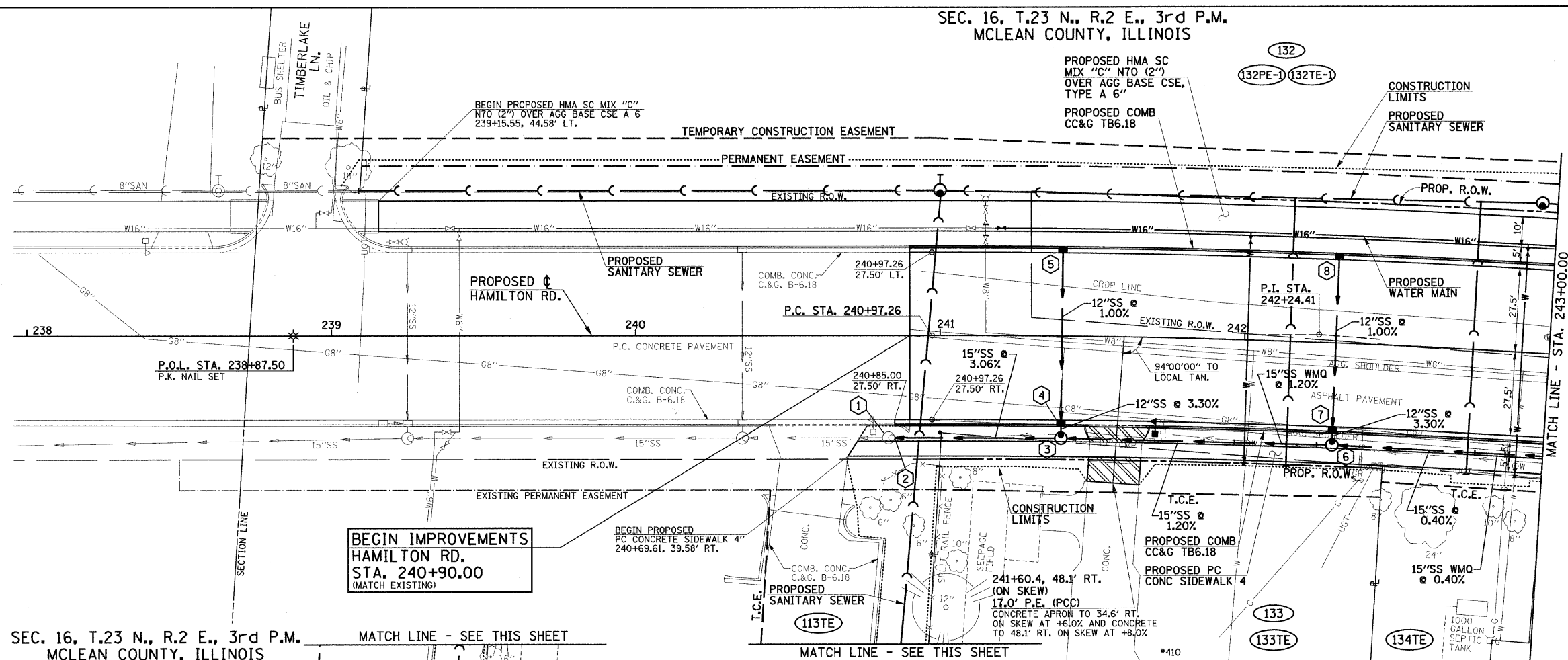
FOR REMOVAL/RELOCATION PLAN
IN THIS AREA SEE SHEET NO. 20.

SEE HORIZONTAL ALIGNMENT LAYOUT
AND CONTROL SHEETS FOR ADDITIONAL
INFORMATION.

SEE SCHEDULE OF QUANTITIES FOR
TYPICAL SECTION PAVEMENT PAY ITEMS
AND THEIR LOCATIONS.

SEE PAVEMENT JOINTS, WATER MAIN, AND
SANITARY SEWER PLAN AND PROFILE SHEETS
FOR ADDITIONAL INFORMATION.

SEE THE STAGE CONSTRUCTION AND MAINTENANCE
OF TRAFFIC PLANS FOR THE VARIOUS STAGES AND
CONSTRUCTION SEQUENCES ON HAMILTON RD.

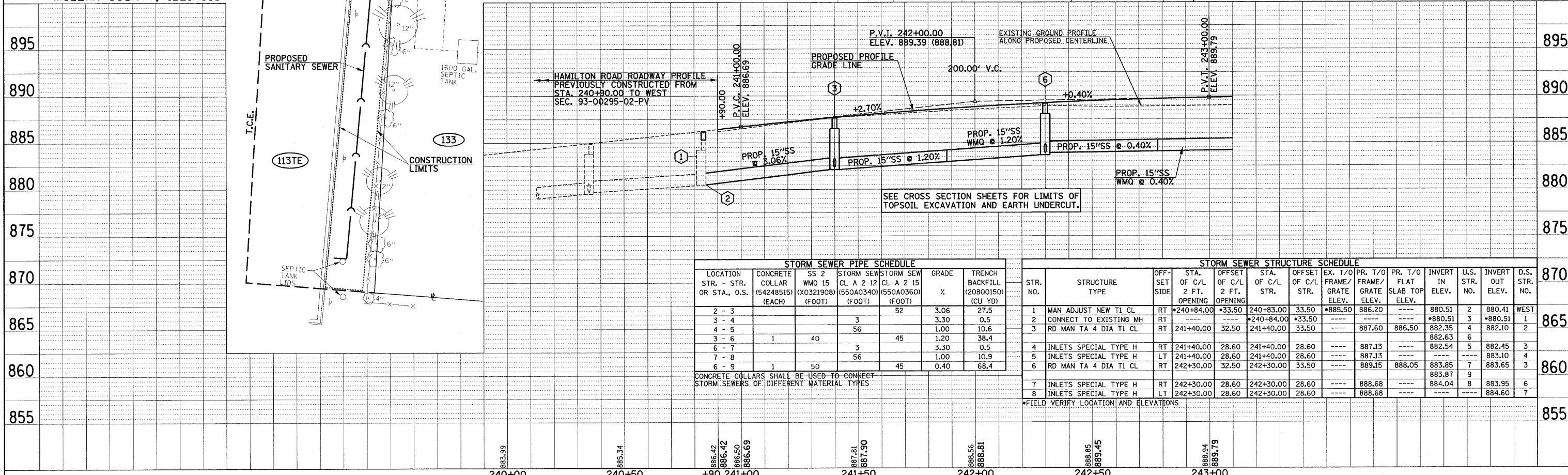


**BEGIN IMPROVEMENTS
HAMILTON RD.
STA. 240+90.00
(MATCH EXISTING)**

SEC. 16, T.23 N., R.2 E., 3rd P.M.
MCLEAN COUNTY, ILLINOIS

MATCH LINE - SEE THIS SHEET

MATCH LINE - SEE THIS SHEET



STORM SEWER PIPE SCHEDULE

LOCATION STR. - STR. OR STA., O.S.	CONCRETE COLLAR (54248515) (EACH)	SS 2 WMQ 15 (X0321908) (FOOT)	STORM SEWER CL A 2 12 CL A 2 15 (550A0340) (550A0360) (FOOT)	GRADE %	TRENCH BACKFILL (20800150) (CU YD)
2 - 3			52	3.06	27.5
3 - 4			3	3.30	0.5
4 - 5			56	1.00	10.6
3 - 6	1	40	45	1.20	38.4
6 - 7			3	3.30	0.5
7 - 8			56	1.00	10.9
6 - 9	1	50	45	0.40	68.4

STORM SEWER STRUCTURE SCHEDULE

STR. NO.	STRUCTURE TYPE	OFF-SET SIDE	STA. OF C/L 2 FT. OPENING	OFFSET OF C/L 2 FT. STR.	STA. OF C/L STR.	OFFSET OF C/L STR.	EX. T/O FRAME/GRATE ELEV.	PR. T/O FRAME/GRATE ELEV.	PR. T/O FLAT ELEV.	INVERT IN ELEV.	U.S. STR. NO.	INVERT OUT ELEV.	D.S. STR. NO.
1	MAN ADJUST NEW T1 CL	RT	*240+84.00	+33.50	240+83.00	33.50	*885.50	886.20	---	880.51	2	880.41	WEST
2	CONNECT TO EXISTING MH	RT	---	---	*240+84.00	*33.50	---	---	---	*880.51	3	*880.51	1
3	RD MAN TA 4 DIA T1 CL	RT	241+40.00	32.50	241+40.00	33.50	---	887.60	886.50	882.35	4	882.10	2
4	INLETS SPECIAL TYPE H	RT	241+40.00	28.60	241+40.00	28.60	---	887.13	---	882.54	5	882.45	3
5	INLETS SPECIAL TYPE H	LT	241+40.00	28.60	241+40.00	28.60	---	887.13	---	883.10	4	883.10	4
6	RD MAN TA 4 DIA T1 CL	RT	242+30.00	32.50	242+30.00	33.50	---	889.15	888.05	883.85	7	883.65	3
7	INLETS SPECIAL TYPE H	RT	242+30.00	28.60	242+30.00	28.60	---	888.68	---	883.87	9	883.87	9
8	INLETS SPECIAL TYPE H	LT	242+30.00	28.60	242+30.00	28.60	---	888.68	---	884.04	8	883.95	6
								---	---	---		884.60	7

CONCRETE COLLARS SHALL BE USED TO CONNECT STORM SEWERS OF DIFFERENT MATERIAL TYPES

*FIELD VERIFY LOCATION AND ELEVATIONS