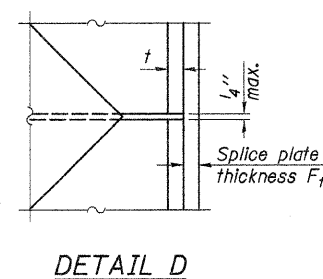
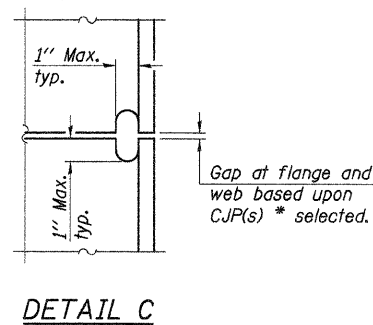
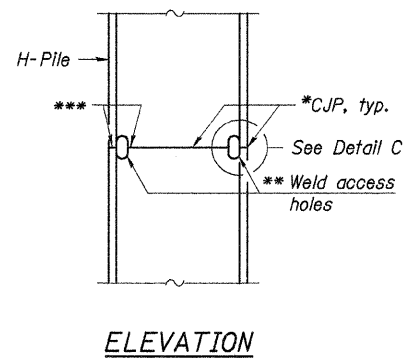
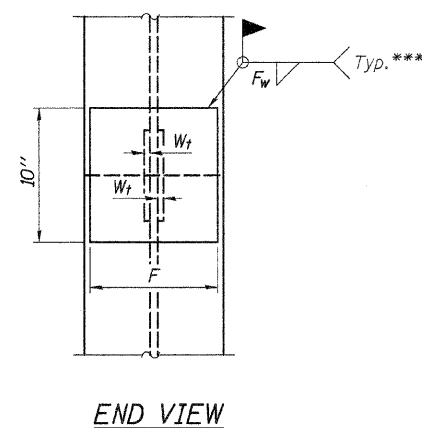
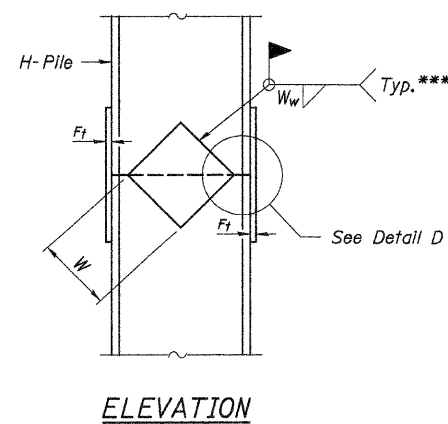


WELDED COMMERCIAL SPLICE



COMPLETE PENETRATION WELD SPLICE

Designation	F	F _t	F _w	W	W _t	W _w
HP 14x117	12 1/2"	1"	7/8"	7 3/4"	5/8"	1/2"
x102	12 1/2"	7/8"	3/4"	7 3/4"	5/8"	1/2"
x89	12 1/2"	3/4"	11/16"	7 3/4"	5/8"	1/2"
x73	12 1/2"	5/8"	9/16"	7 3/4"	5/8"	1/2"
HP 12x84	10"	7/8"	11/16"	6 1/2"	5/8"	1/2"
x74	10"	7/8"	11/16"	6 1/2"	5/8"	1/2"
x63	10"	5/8"	1/2"	6 1/2"	1/2"	3/8"
x53	10"	5/8"	1/2"	6 1/2"	1/2"	3/8"
HP 10x57	8"	3/4"	9/16"	5 1/4"	1/2"	3/8"
x42	8"	5/8"	9/16"	5 1/4"	1/2"	3/8"
HP 8x36	7"	5/8"	7/16"	4 1/4"	1/2"	3/8"

WELDED PLATE FIELD SPLICE

Note:
The steel H-piles shall be according to AASHTO M270 Grade 50.

STEEL PILE SPLICING DETAILS
SECTION 07-00188-00-BR
COUNTY HIGHWAY 3
WHITESIDE COUNTY
STA. 48+02.50

DESIGNED -	A.L.S.
CHECKED -	A.L.S.
DRAWN -	S.A.P.
CHECKED -	A.R.K.

F-HP

11-1-06

4440 ASH GROVE
SPRINGFIELD, IL 62711
(217) 793-8600
www.fehr-graham.com

FEHR-GRAHAM & ASSOCIATES, LLC
ENGINEERING AND SCIENCE CONSULTANTS
REGISTERED PROFESSIONAL ENGINEERS & ARCHITECTS IN ILLINOIS

JOB NO.: 47515
FILE: PILES.DGN
DATE: 08/17/09