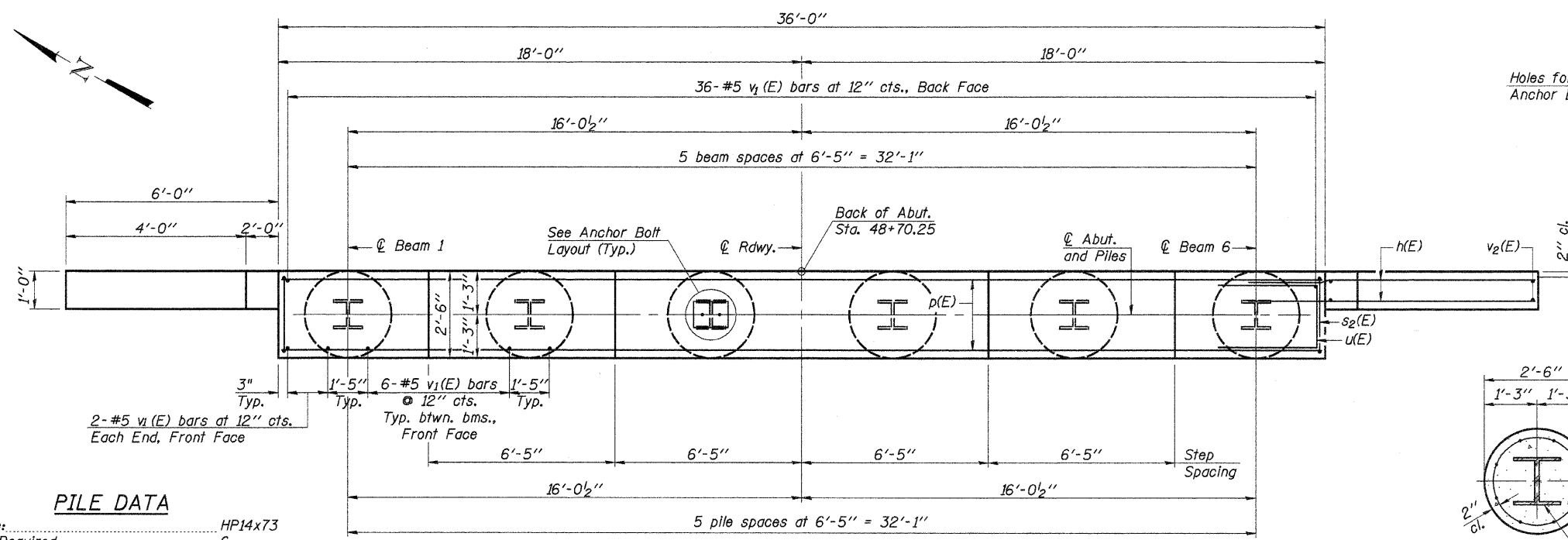
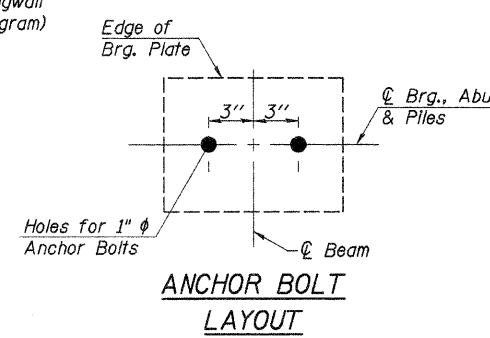
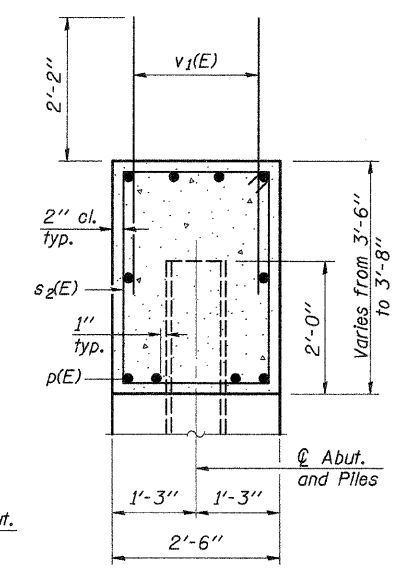
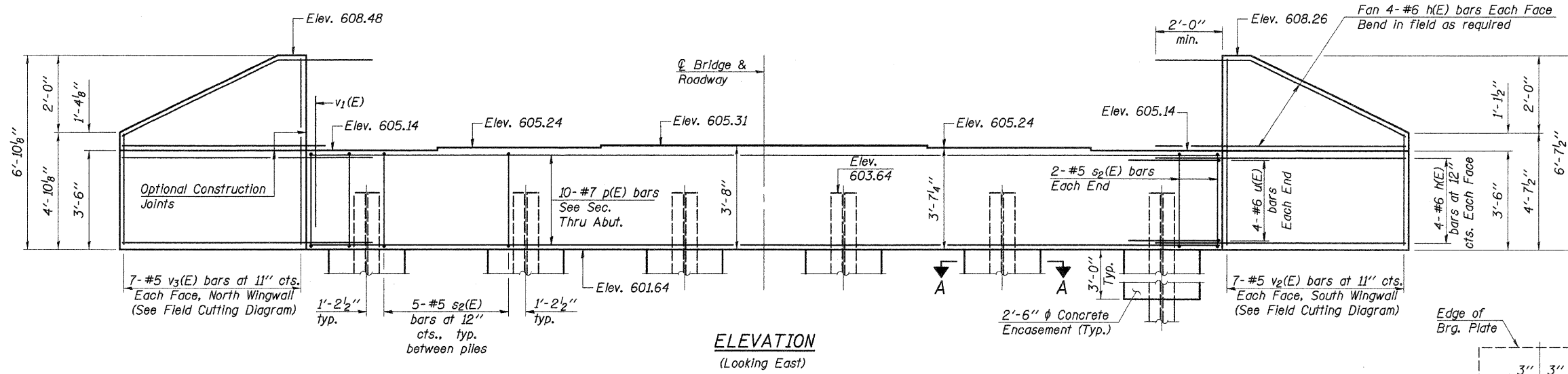


Notes: Four steps monolithically with cap.



**BILL OF MATERIAL**

Bar No.	Size	Length	Shape
h(E)	32	#6	8'-6"
p(E)	10	#7	35'-8"
s <sub>2</sub> (E)	29	#5	11'-7"
u(E)	8	#6	12'-1"
v <sub>1</sub> (E)	70	#5	4'-6"
v <sub>2</sub> (E)	7	#5	10'-9"
v <sub>3</sub> (E)	7	#5	11'-1"
Structure Excavation	Cu. Yd.	112	
Concrete Structures	Cu. Yd.	14.5	
Reinforcement Bars, Epoxy Coated	Pound	2,120	
Furnishing Steel Piles HP14x73	Foot	468	
Driving Piles	Foot	468	
Concrete Encasement	Cu. Yd.	3.3	
Protective Coat	Sq. Yd.	7	

For Pile details, see sheet 19 of 22.

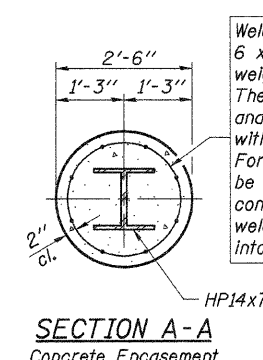
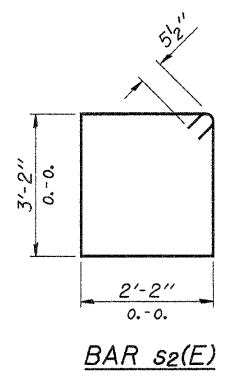
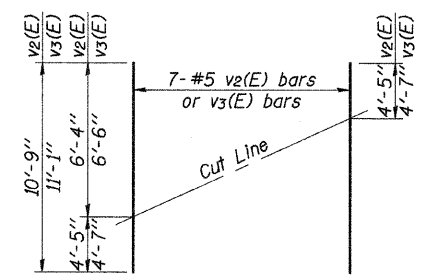
**PILE DATA**

Type: HP14x73  
 No. Required: 6  
 Nominal Required Bearing: 260 kips  
 Factored Resistance Available: 130 kips  
 Est. Length: 78 Foot

The steel H-piles shall be according to AASHTO M270, Grade 50.

DESIGNED -	A.L.S.
CHECKED -	J.A.M.
DRAWN -	S.A.P.
CHECKED -	J.A.M.

AI-0 11-1-06



**EAST ABUTMENT**  
 SECTION 07-00188-00-BR  
 COUNTY HIGHWAY 3  
 WHITESIDE COUNTY  
 STA. 48+02.50