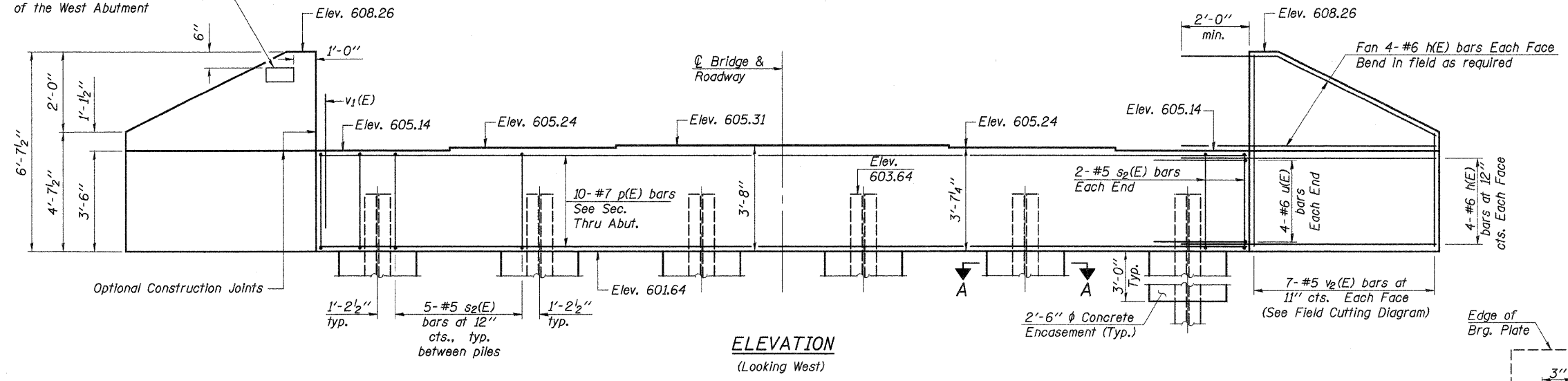


ROUTE NO.	SECTION	COUNTY	TOTAL SHEETS	SHEET NO.
C.H. 3	07-00188-00-BR	WHITESIDE	32	21

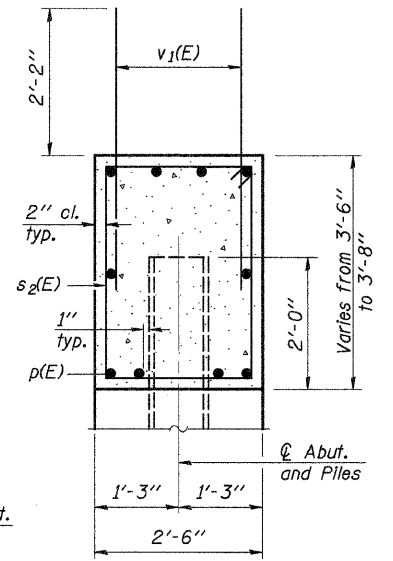
Sheet 16 of 22 Contract No. 85465

Notes: Four steps monolithically with cap.

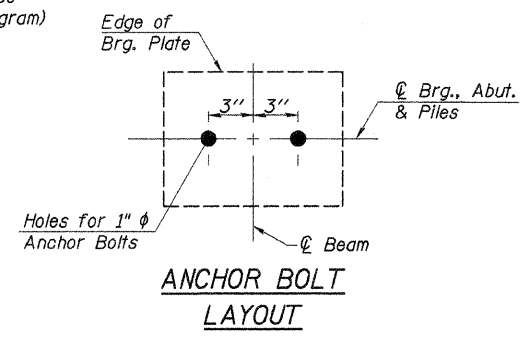
Name Plate shall be placed on the outside face of the South Wing of the West Abutment



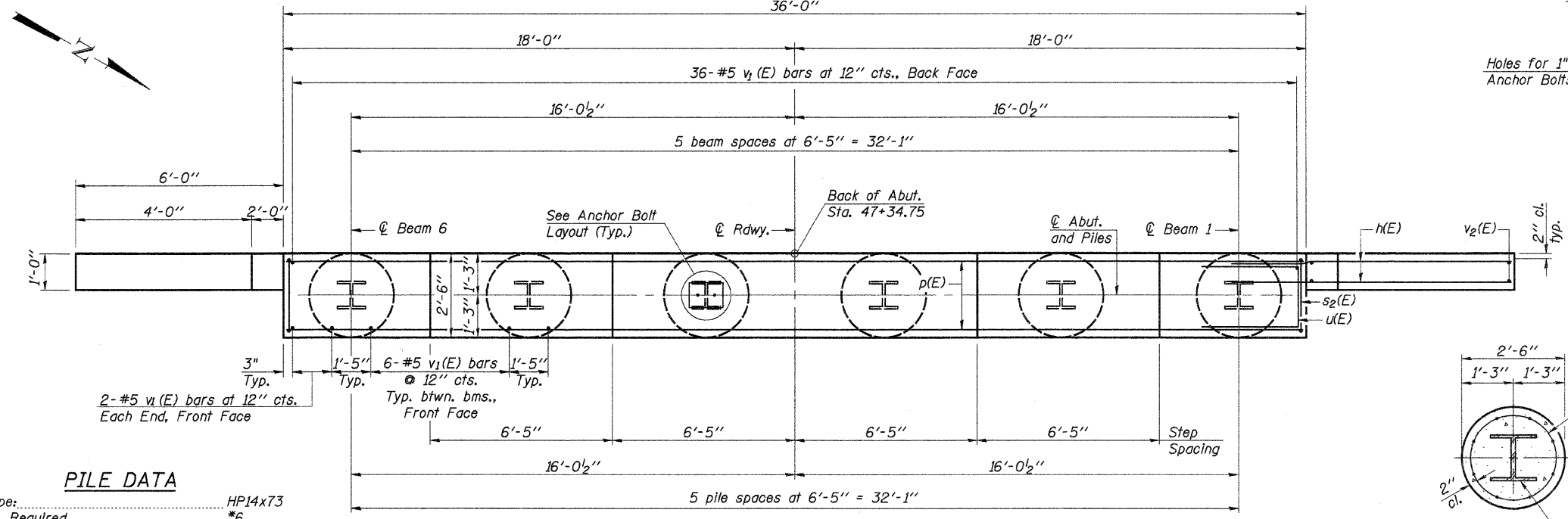
ELEVATION
(Looking West)



SEC. THRU ABUT.



ANCHOR BOLT LAYOUT



PLAN

PILE DATA

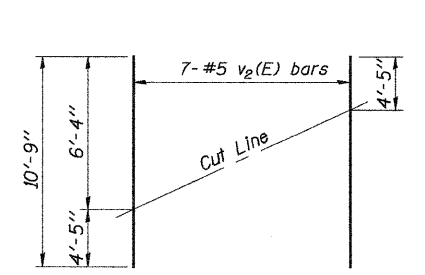
Type: HP14x73
 No. Required: *6
 Nominal Required Bearing: 260 kips
 Factored Resistance Available: 130 kips
 Est. Length: 78 Foot

*Includes 1 Test Pile to be driven in a permanent location at the west abutment.
 The steel H-piles shall be according to AASHTO M270, Grade 50.
 The test piles shall be driven to 110 percent of the Nominal Required Bearing indicated above.

DESIGNED -	A.L.S.
CHECKED -	J.A.M.
DRAWN -	S.A.P.
CHECKED -	J.A.M.

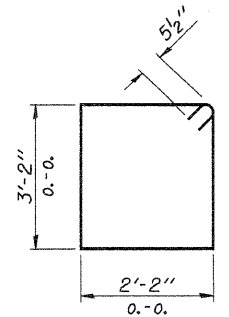
AI-0

11-1-06

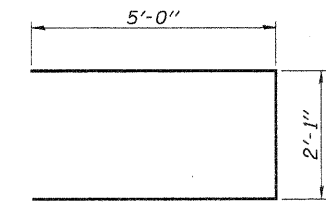


FIELD CUTTING DIAGRAM

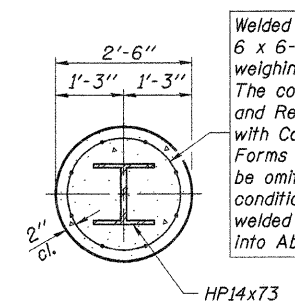
Order v2(E) full length. Cut as shown and use remainder of bars in opposite face.



BAR s2(E)



BAR u(E)



SECTION A-A
Concrete Encasement

Welded wire fabric 6 x 6-W4.0 x W4.0 weighing 58#/100 sq. ft. The cost of Excavation, and Reinforcement is included with Concrete Encasement. Forms for Encasement may be omitted when soil conditions permit. Extend welded wire fabric 2'-0" min. into Abutment cap.

BILL OF MATERIAL

Bar No.	Size	Length	Shape
h(E)	32	#6	8'-6"
p(E)	10	#7	35'-8"
s2(E)	29	#5	11'-7"
u(E)	8	#6	12'-1"
v1(E)	70	#5	4'-6"
v2(E)	14	#5	10'-9"
Structure Excavation	Cu. Yd.	112	
Concrete Structures	Cu. Yd.	14.6	
Reinforcement Bars, Epoxy Coated	Pound	2,120	
Name Plate	Each	1	
Furnishing Steel Piles HP14x73	Foot	390	
Driving Piles	Foot	390	
Test Pile, HP14x73	Each	1	
Concrete Encasement	Cu. Yd.	3.3	
Protective Coat	Sq. Yd.	7	

For Pile details, see sheet 19 of 22.

WEST ABUTMENT
 SECTION 07-00188-00-BR
 COUNTY HIGHWAY 3
 WHITESIDE COUNTY
 STA. 48+02.50