

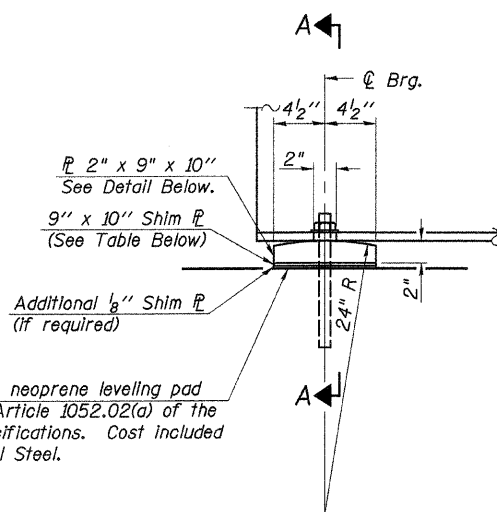
Notes:

Anchor bolts shall be ASTM F1554 Grade 36 all-thread of the diameter(s) specified. ASTM A307 Grade C anchor bolts may be used in lieu of ASTM F1554 Grade 36 (Fy=36ksi). The corresponding specified grade of AASHTO M314 anchor bolts may be used in lieu of ASTM F1554.

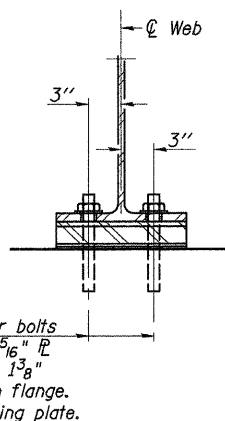
Anchor bolts at fixed bearings may be either cast in place or installed in holes drilled after the supported member is in place.

Drilled and set anchor bolts shall be installed according to Article 521.06 of the Standard Specifications.

Two 1/8" adjusting shims, of the dimension of the bottom bearing plate, shall be provided for each bearing in addition to all other plates or shims.

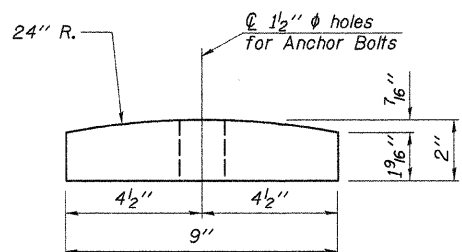


ELEVATION AT ABUTMENTS

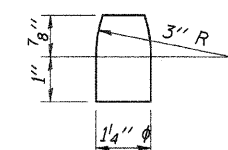


SECTION A-A

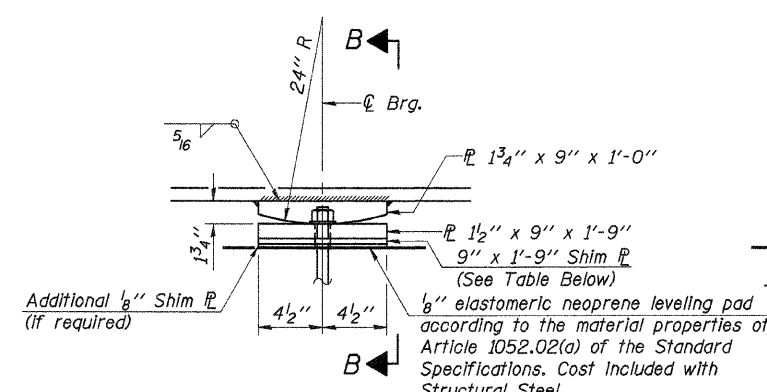
ABUTMENT BEARING
(12 Required)
Weight included with Structural Steel.



BEARING PLATE DETAIL

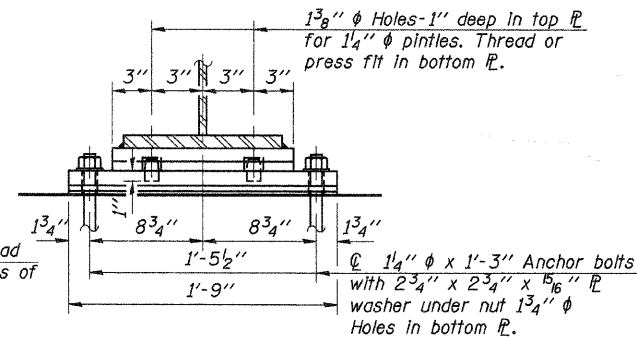


PINTLE



ELEVATION AT PIERS 1 & 2

FIXED BEARING
(12 Required)
Weight included with Structural Steel.



SECTION B-B

SHIM PLATE THICKNESS

Location	Beam 1	Beam 2	Beam 3	Beam 4	Beam 5	Beam 6
West Abutment	—	—	5/16"	5/16"	—	—
Pier 1	—	—	—	—	—	—
Pier 2	3/4"	5/8"	1/2"	3/8"	3/8"	3/8"
East Abutment	2 1/4"	1 5/16"	5/16"	5/16"	—	—

BILL OF MATERIAL

Item	Unit	Total
Anchor Bolts 1" φ	Each	24
Anchor Bolts 1 1/4" φ	Each	24

Work this Sheet with Sheets 13 & 14 of 22.

BEARING DETAILS
SECTION 07-00188-00-BR
COUNTY HIGHWAY 3
WHITESIDE COUNTY
STA. 48+02.50

DESIGNED -	A.L.S.
CHECKED -	A.R.K.
DRAWN -	S.A.P.
CHECKED -	A.R.K.

I-2E-2

10-1-08