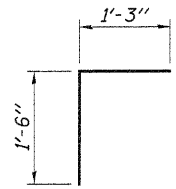
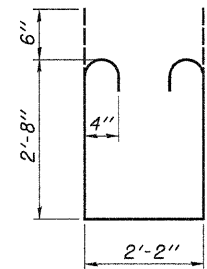


ROUTE NO.	SECTION	COUNTY	TOTAL SHEETS	SHEET NO.
C.H. 3	07-00188-00-BR	WHITESIDE	32	14
		ILLINOIS		

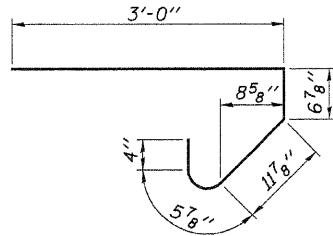
Sheet 9 of 22 Contract No. 85465



BAR v(E)



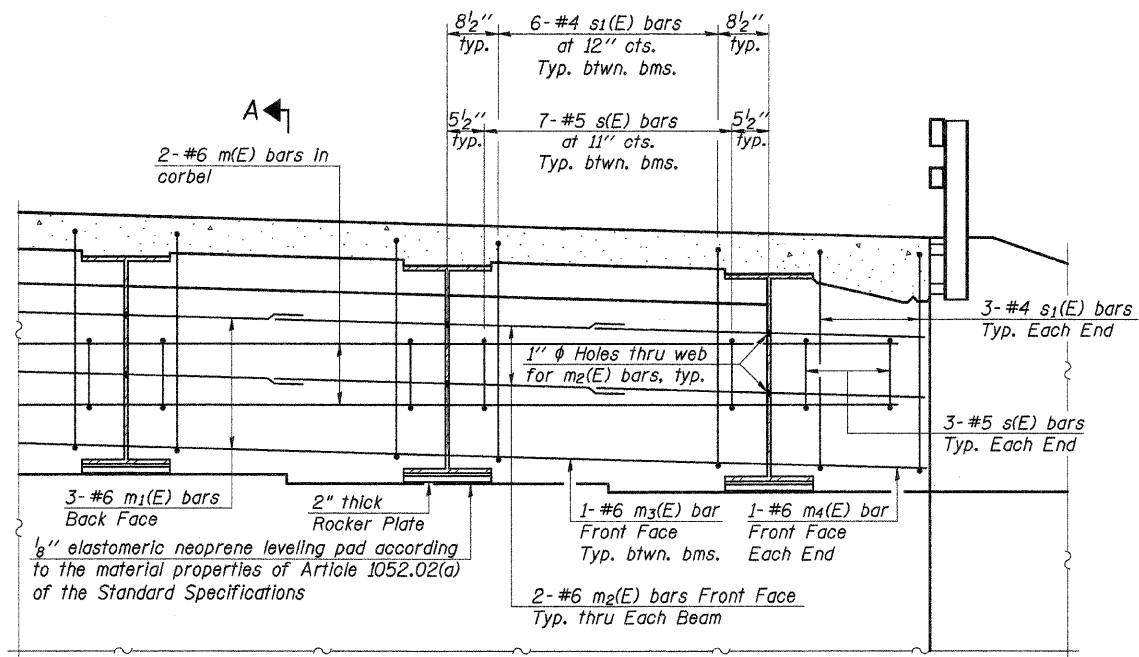
BAR s1(E)



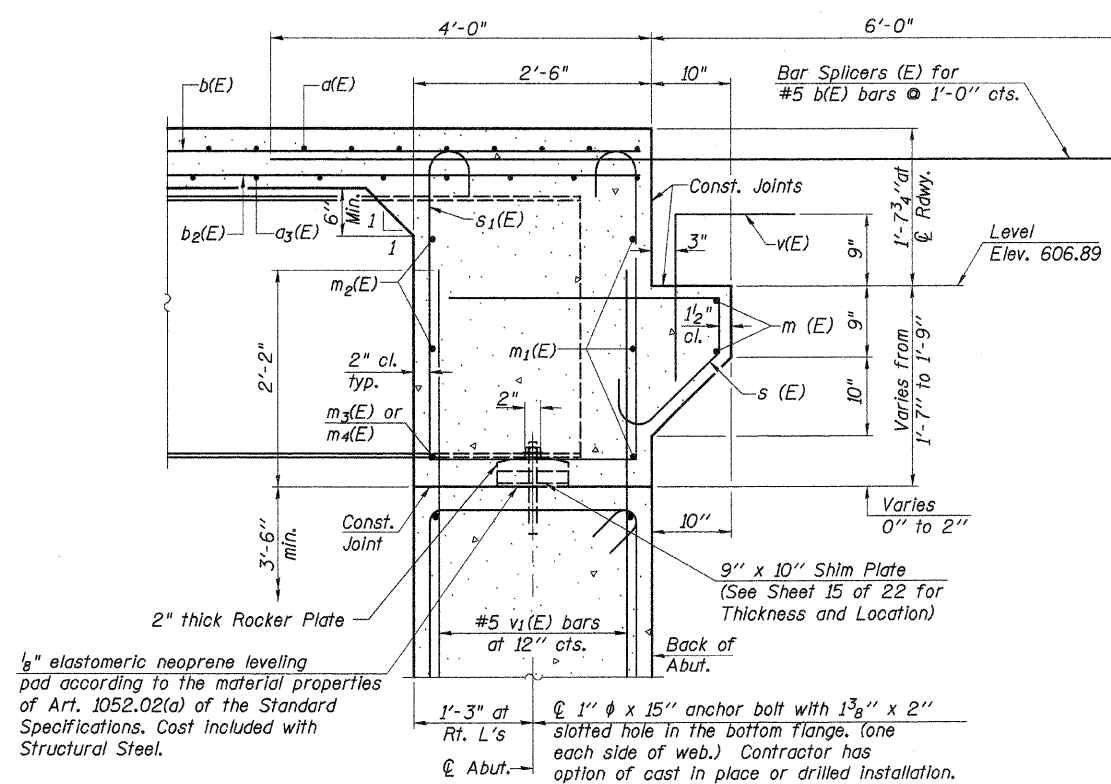
BAR s(E)

Notes:
 Reinforcement bars in diaphragm are billed with superstructure on sheet 8 of 22.
 Concrete in diaphragm is included with Concrete Superstructure on sheet 8 of 22.
 The s(E) and s1(E) bars shall be placed parallel to the beams. Spacing for these bars shall be at right angles to the beams.

MIN. BAR LAP
 #6 bar = 2'-0"



DIAPHRAGM ELEVATION AT ABUTMENT



SECTION A-A

Dimensions at right angles to abutment, except as shown.

DESIGNED -	A.L.S.
CHECKED -	A.R.K.
DRAWN -	S.A.P.
CHECKED -	A.R.K.

SI-DS2

10-1-08

SUPERSTRUCTURE DETAILS
 SECTION 07-00188-00-BR
 COUNTY HIGHWAY 3
 WHITESIDE COUNTY
 STA. 48+02.50

4440 ASH GROVE
 SPRINGFIELD, IL 62711
 (217) 793-3600
 www.fehr-graham.com

FEHR-GRAHAM & ASSOCIATES, LLC
 ENGINEERING AND SCIENCE CONSULTANTS
 FREEPORT, IL ROCKFORD, IL ROCKFORD, IL SPRINGFIELD, IL

JOB NO.: 47515
 FILE: SUPER.DGN
 DATE: 08/17/09