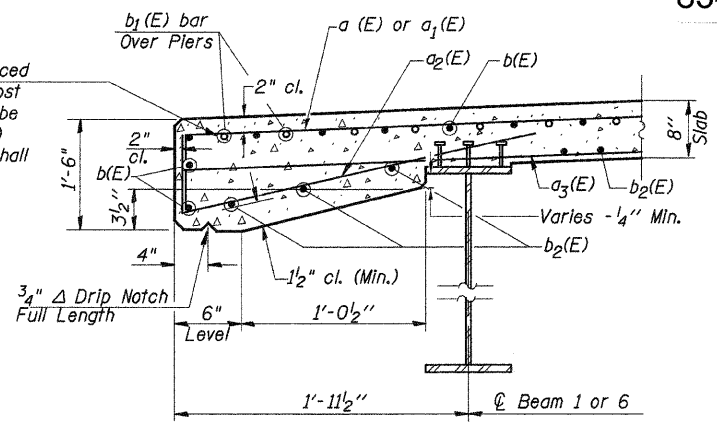


HALF PLAN

Reinforcement bars in the top of the deck shall be placed with a 2" minimum clearance in the area of the rail post anchor devices. The studs of the anchor device shall be placed below the top reinforcement bars a(E) and a1(E) and the outermost longitudinal reinforcement bar b(E) shall be placed directly above the anchor device studs.



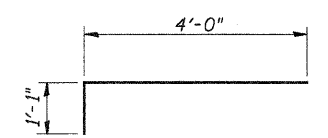
SECTION THRU EDGE OF SLAB

**SUPERSTRUCTURE BILL OF MATERIAL**

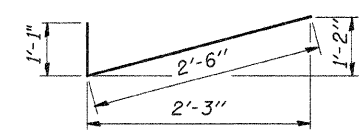
Bar	No.	Size	Length	Shape
a(E)	251	#5	35'-8"	—
a1(E)	252	#6	5'-1"	—
a2(E)	252	#5	3'-7"	✓
a3(E)	163	#5	35'-4"	—
b(E)	240	#5	23'-11"	—
b1(E)	70	#6	31'-2"	—
b2(E)	180	#5	28'-5"	—
m(E)	4	#6	36'-4"	—
m1(E)	6	#6	35'-8"	—
m2(E)	24	#6	8'-5"	—
m3(E)	10	#6	6'-2"	—
m4(E)	4	#6	1'-9"	—
s(E)	82	#5	5'-5"	□
s1(E)	72	#4	8'-6"	□
v(E)	74	#5	2'-9"	—
Protective Coat		Sq. Yd.	823	
Conc. Superstructure		Cu. Yd.	152.8	
Reinforcement Bars, Epoxy Coated		Pound	34,840	
Bridge Deck Grooving		Sq. Yd.	512	

**MIN. BAR LAPS**

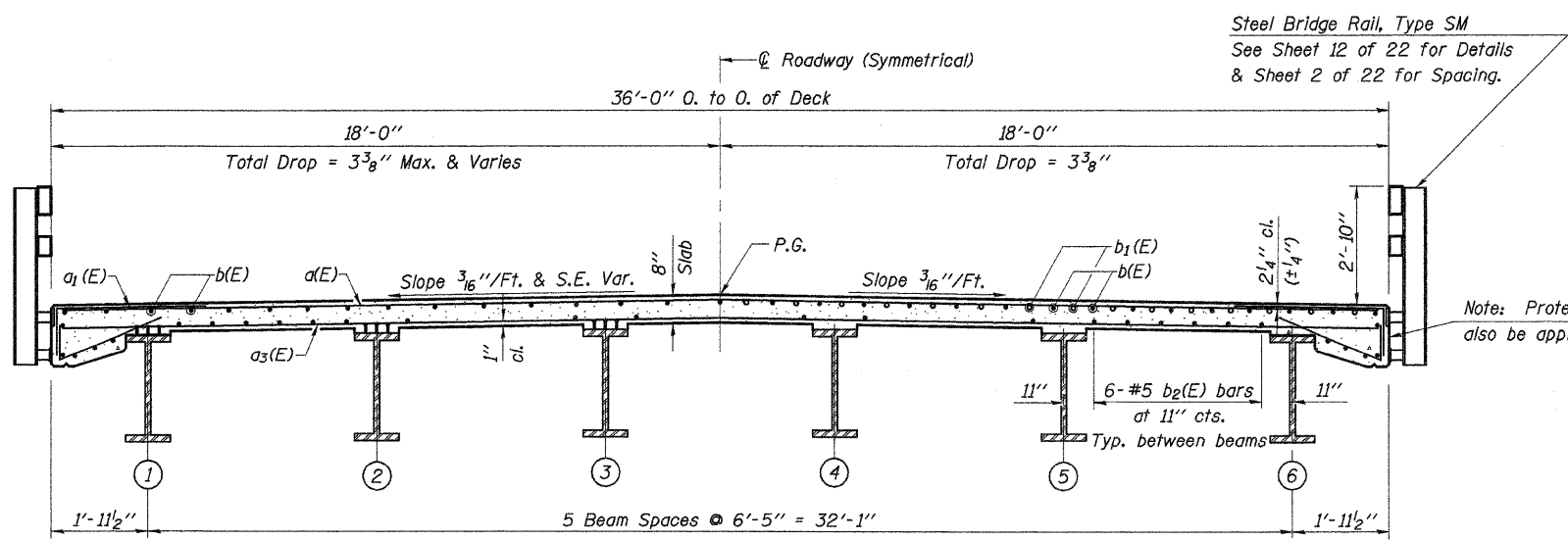
#5 1'-8"  
#6 2'-0"



BAR a1(E)



BAR a2(E)



CROSS SECTION (Looking East)

Steel Bridge Rail, Type SM  
See Sheet 12 of 22 for Details & Sheet 2 of 22 for Spacing.

Note: Protective Coat shall also be applied to Deck Fascias.

DESIGNED -	A.L.S.
CHECKED -	A.R.K.
DRAWN -	S.A.P.
CHECKED -	A.R.K.

Bars indicated thus 20x3-#5 etc. Indicates 20 lines of bars with 3 lengths per line.  
See Sheet 20 of 22 for Bar Splicer Details.

Work this Sheet with Sheet 9 of 22.

**SUPERSTRUCTURE SECTION 07-00188-00-BR COUNTY HIGHWAY 3 WHITESIDE COUNTY STA. 48+02.50**